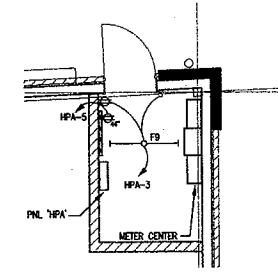
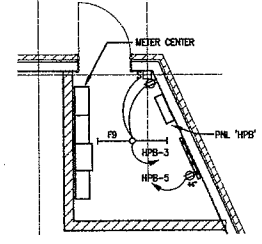


- REVISIONS:**
- INSTALL POWER SUPPLY PROVIDED WITH TYPE "A" FIXTURE ON THE INTERIOR OF THE BUILDING AT THE ROOF DECK. PROVIDE WIRING AND CONDUIT TO THE FIXTURE PER THE FIXTURE MANUFACTURER'S RECOMMENDATIONS.
 - PROVIDE (1) 2" FC WITH PULLBUSH BELOW GRADE TO TELEPHONE CABINET AND (1) 4" FC WITH PULLBUSH BELOW GRADE TO WIRING THROUGH THIS BUILDING.
 - UNIT PROVIDED WITH INTEGRAL DISCONNECTING MEANS AND CONVENIENCE RECEPTACLE. COORDINATE EXACT REQUIREMENTS WITH MECHANICAL.

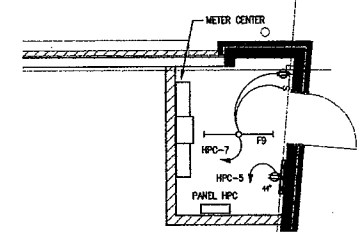
LIGHTING FIXTURE SCHEDULE						
TYPE	DESCRIPTION	MOUNT	VOLTS	LAMPS	MANUFACTURER	REMARKS
F2	WALL MOUNTED DECORATIVE DOWN LIGHT	WALL	120	25W MAX	DK LIGHTING AO-0-BLP-9-11	
F4	EXTERIOR ACCENT LIGHTING LENGTHS AS REQUIRED FOR ARCHITECTURAL PLANS. PROVIDE WITH ASSOCIATED POWER SUPPLY.		120	LED	LIGHT TECHNOLOGIES #PH-24V-WARM WHITE-BK-KX	
F9	4' STRIP LIGHT, 2 LAMPS	SURFACE MOUNTED	120	F30TB 3500K	DAVIBRITE #TZ-32-120	
ⓧ	COMBO EXIT/EMERG LIGHT WHITE POLYCARBONATE WITH RED LETTERING. SINGLE FACE BATTERY BACK-UP	WALL	120	FURN WITH UNIT	CHLORIDE #EC	



ENLARGED ELEC RM BLDG A
SCALE: 1/4" = 1'-0"



ENLARGED ELEC RM BLDG B
SCALE: 1/4" = 1'-0"



ENLARGED ELEC RM BLDG C
SCALE: 1/4" = 1'-0"

sEi ber

Selber Design Inc.
675 Drewry St. NE
Studio 10
Atlanta GA 30306
404.875.6765

THE CROSSING @ SIXES



MINICK ENGINEERING, INC.
3585 HOBBSHAM OF NORTHOKE
TUCKER, GEORGIA 30084
TEL (770) 491-7848
FAX (770) 491-7858
27065

Revision/Notes	Number	Date	Description
	06/20/2027		RELEASED FOR PERMIT



Job Address:
SIXES ROAD
CHEROKEE COUNTY, GA

Drawing Title:
ELECTRICAL PLAN

Drawing Status:
RELEASED FOR PERMIT

Drawing Number:
E1.1

To Order Plans Go To WWW.LDIREPRO.COM

Selber Design Inc.
675 Drewry St. NE
Atlanta GA 30306
404.875.6785

304

To Order Plans Go To WWW.LDIREPRO.COM

THE CROSSING @ SIXES

MINTEX ENGINEERING, INC.
3585 Habersham at Northlake
Tucker, Georgia 30084
TEL (770)-491-7848
FAX (770)-491-7858
27085

Revision History

Number	Date	Description
01	09-20-2007	RELEASE FOR PERMIT

Job Address
SIXES ROAD
CHEROKEE COUNTY, GA

Drawing Title
SCHEDULES, RISER DIAGRAM,
NOTES & LEGEND

Released For Permit
E2.1

CIRC. NO.	TRIP POLE	DESCRIPTION	CONNECTED LOAD (KVA)			MOUNTING SURFACE	TRIP POLE	CIRC. NO.
			PHASE A	PHASE B	PHASE C			
1	20/1	SPRINKLER RM RECEPT/AT	.3	.1		EXIT LIGHTING	20/1	2
3	20/1	ELEC RM RECEPT/AT	.3	1.3		EXTERIOR LIGHTING	20/1	4
5	20/1	TELEPHONE BACKBOARD	.2	1.3		EXTERIOR LIGHTING	20/1	6
7	20/1	DUCT DETECTORS	.2	1.0		EXTERIOR LIGHTING	20/1	8
9	20/1	SPARE		X / 1.0		EXTERIOR LIGHTING	20/1	10
11	20/1	SPARE		X / X		SPARE	20/1	12
13	20/1	SPARE	X / .1			LED LIGHTING	20/1	14
15	20/1	SPARE	X / .1			LED LIGHTING	20/1	16
17	20/1	SPARE		X / .1		LED LIGHTING	20/1	18
19	20/1	SPARE	X / .1			LED TOWER LIGHTING	20/1	20
21	20/1	SPARE		X / .1		LED TOWER LIGHTING	20/1	22
23	20/1	SPARE		X / .1		LED TOWER LIGHTING	20/1	24
25	20/1	SPARE	X / 1.0			MONUMENT SIGN	20/1	26
27	20/1	SPARE	X / X			SPARE	20/1	28
29	20/1	SPARE	X / X			SPARE	20/1	30
31	20/1	SPARE	X / X			SPARE	20/1	32
33	20/1	SPARE	X / X			SPARE	20/1	34
35	20/1	SPARE	X / 1.1			LN-1	20/2	36
37	20/1	SPARE	X / 1.1				38	
39	20/1	SPARE	X / .8			SITE LIGHTING	20/2	40
41	20/1	SPARE	X / .8				42	
MIN. BREAKER A.L.C.			36,000	3.9	3.6	TOTAL CONNECT LOAD:	11.1 KVA	

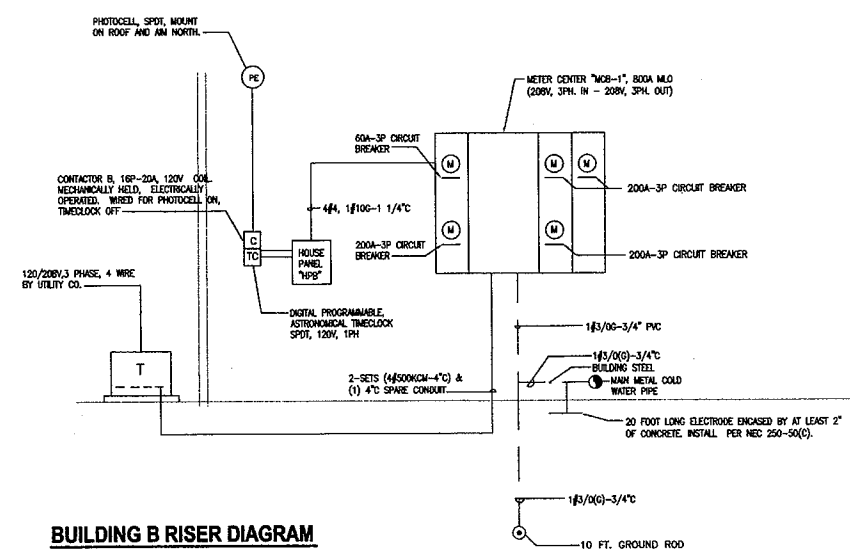
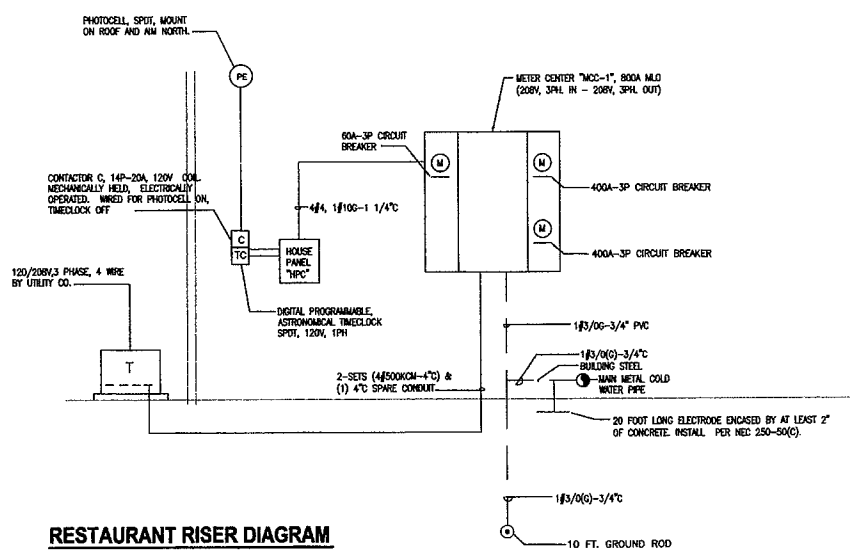
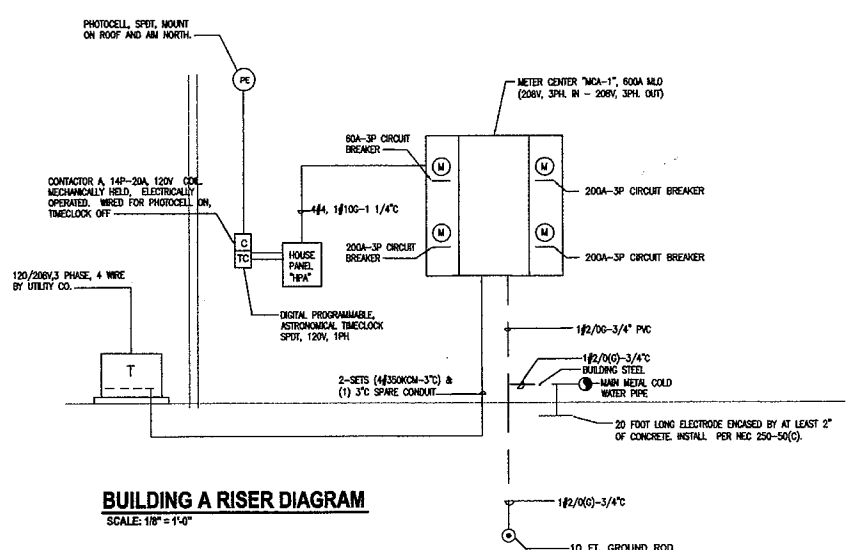
NOTES: PROVIDE COPPER GROUND BUS

CIRC. NO.	TRIP POLE	DESCRIPTION	CONNECTED LOAD (KVA)			MOUNTING SURFACE	TRIP POLE	CIRC. NO.
			PHASE A	PHASE B	PHASE C			
1	20/1	SPRINKLER RM RECEPT/AT	.3	.1		EXIT LIGHTING	20/1	2
3	20/1	ELEC RM RECEPT/AT	.3	1.0		EXTERIOR LIGHTING	20/1	4
5	20/1	TELEPHONE BACKBOARD	.2	1.0		EXTERIOR LIGHTING	20/1	6
7	20/1	DUCT DETECTORS	.2	1.3		EXTERIOR LIGHTING	20/1	8
9	20/1	SPARE		X / 1.5		EXTERIOR LIGHTING	20/1	10
11	20/1	SPARE		X / X		EXTERIOR LIGHTING	20/1	12
13	20/1	SPARE	X / X			SPARE	20/1	14
15	20/1	SPARE	X / X			SPARE	20/1	16
17	20/1	SPARE	X / X			SPARE	20/1	18
19	20/1	SPARE	X / .1			LED LIGHTING	20/1	20
21	20/1	SPARE	X / .1			LED LIGHTING	20/1	22
23	20/1	SPARE	X / .1			LED LIGHTING	20/1	24
25	20/1	SPARE	X / .1			LED TOWER LIGHTING	20/1	26
27	20/1	SPARE	X / .1			LED TOWER LIGHTING	20/1	28
29	20/1	SPARE	X / .1			LED TOWER LIGHTING	20/1	30
31	20/1	SPARE	X / .1			LED TOWER LIGHTING	20/1	32
33	20/1	SPARE	X / X			SPARE	20/1	34
35	20/1	SPARE	X / 1.1			LN-1	20/2	36
37	20/1	SPARE	X / 1.1				38	
39	20/1	SPARE	X / 1.1			SITE LIGHTING	20/2	40
41	20/1	SPARE	X / 1.1				42	
MIN. BREAKER A.L.C.			22,000	3.3	4.1	TOTAL CONNECT LOAD:	12.5 KVA	

NOTES: PROVIDE COPPER GROUND BUS

CIRC. NO.	TRIP POLE	DESCRIPTION	CONNECTED LOAD (KVA)			MOUNTING SURFACE	TRIP POLE	CIRC. NO.
			PHASE A	PHASE B	PHASE C			
1	20/1	SPRINKLER RM RECEPT/AT	.3	.1		EXIT LIGHTING	20/1	2
3	20/1	ELEC RM RECEPT/AT	.3	.8		EXTERIOR LIGHTING	20/1	4
5	20/1	TELEPHONE BACKBOARD	.2	1.5		EXTERIOR LIGHTING	20/1	6
7	20/1	DUCT DETECTORS	.2	1.0		EXTERIOR LIGHTING	20/1	8
9	20/1	SPARE		X / 1.3		EXTERIOR LIGHTING	20/1	10
11	20/1	SPARE		X / X		EXTERIOR LIGHTING	20/1	12
13	20/1	SPARE	X / X			SPARE	20/1	14
15	20/1	SPARE	X / .1			LED LIGHTING	20/1	16
17	20/1	SPARE	X / .1			LED LIGHTING	20/1	18
19	20/1	SPARE	X / .1			LED LIGHTING	20/1	20
21	20/1	SPARE	X / .1			LED TOWER LIGHTING	20/1	22
23	20/1	SPARE	X / .1			LED TOWER LIGHTING	20/1	24
25	20/1	SPARE	X / .1			LED TOWER LIGHTING	20/1	26
27	20/1	SPARE	X / .1			LED TOWER LIGHTING	20/1	28
29	20/1	SPARE	X / X			SPARE	20/1	30
31	20/1	SPARE	X / X			SPARE	20/1	32
33	20/1	SPARE	X / X			SPARE	20/1	34
35	20/1	SPARE	X / 1.1			LN-1	20/2	36
37	20/1	SPARE	X / 1.1				38	
39	20/1	SPARE	X / 1.3			SITE LIGHTING	20/2	40
41	20/1	SPARE	X / 1.3				42	
MIN. BREAKER A.L.C.			36,000	3.3	4.0	TOTAL CONNECT LOAD:	11.6 KVA	

NOTES: PROVIDE COPPER GROUND BUS



ELECTRICAL LEGEND

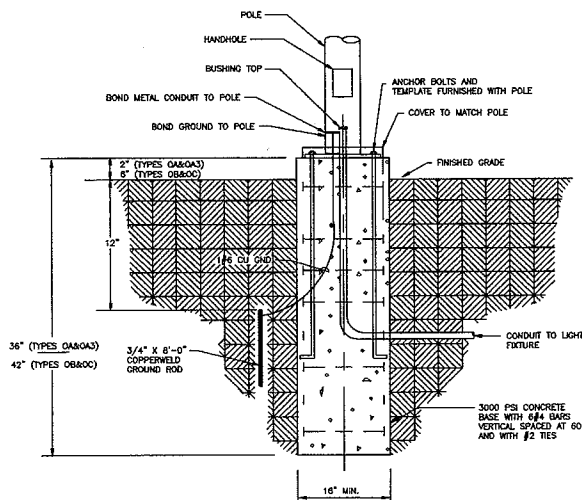
- LIGHTING**
- FLUORESCENT LIGHTING FIXTURE.
 - EMERGENCY LIGHTING FIXTURE WITH BATTERY BACKUP. BATTERY BACKUP SHALL POWER (2) LAMPS AT 600 LUMENS FOR 90 MINUTES.
 - DOWNLIGHT.
 - EXIT LIGHTING FIXTURE, FACE PLATES (DARKENED) AND DIRECTIONAL ARROWS AS INDICATED. PROVIDE WITH BATTERY BACKUP.
 - S SINGLE POLE SWITCH, 20A, 120/277 VOLT, 48" AFF.
 - Ss THREE-WAY SWITCH, 20A, 120/277 VOLT, 48" AFF.
- POWER**
- ⊕ DUPLEX GROUNDING TYPE RECEPTACLE, 20A, 125 VOLT, NEMA 5-20R, 18" AFF., U.O.M.
 - ⊕ GFI DUPLEX GROUND FAULT INTERRUPTER TYPE RECEPTACLE, 20A, 125 VOLT, NEMA 5-20R, 18" AFF., U.O.M.
 - ⊕ GFIC DUPLEX GROUND FAULT INTERRUPTER TYPE RECEPTACLE, MOUNT HORIZONTALLY 18" AFF., IN GAST OUTLET BOX WITH GASKET DEWSE COVER.
 - ⊕ GFCI DUPLEX GROUNDING TYPE RECEPTACLE, 20A, 125 VOLT, NEMA 5-20R. MOUNT HORIZONTALLY 6" AFF. FOR WATER COOLER.
 - PANELBOARD, 120/208 VOLT, 3 PHASE, 4 WIRE, SN
 - ELECTRICAL CIRCUIT RUN IN CONDUIT AND CIRCUIT HOMERUN TO PANELBOARD (PANEL AND CIRCUIT DESIGNATION AS INDICATED). AS A MINIMUM CONDITION, EACH SINGLE PHASE CIRCUIT SHALL HAVE ONE #12 PHASE CONDUCTOR, ONE #12 NEUTRAL CONDUCTOR, AND ONE #12 GROUNDING CONDUCTOR (PLUS ONE INSULATED, ISOLATED GROUNDING CONDUCTOR WHEN SERVING ISOLATED GROUND TYPE DEVICES) IN 1/2" CONDUIT. PROVIDE ADDITIONAL PHASE CONDUCTORS AS REQUIRED FOR MULTIPLE PHASED ELECTRICAL LOADS. PROVIDE ADDITIONAL SWITCH LEG CONDUCTORS TO PROVIDE THE LIGHT FIXTURE CONTROL. INDICATED MULTIPLE SINGLE PHASE CONDUCTORS SHALL BE GROUPED TOGETHER IN A COMMON CONDUIT IN ACCORDANCE WITH THE NEC AND AT THE CONTRACTOR'S DISCRETION. MULTIPLE SINGLE PHASE CONDUCTORS SERVING ISOLATED GROUND RECEPTACLES SHALL NOT SHARE COMMON NEUTRALS. NEUTRAL AND GROUNDING CONDUCTORS SHALL BE SHARED AS ALLOWED BY THE NEC. BRANCH CIRCUIT CONDUCTORS IN CONDUIT SHALL BE RUN CONCEALED IN WALLS AND/OR ABOVE CEILING, IN/OR BELOW FLOORS, EXCEPT IN EXPOSED CONSTRUCTION AREAS. FLUORESCENT LIGHTING CIRCUITS SERVING SWITCHED FIXTURES WITH EMERGENCY BATTERY BACK-UP SHALL CONTAIN ONE UNSWITCHED CONDUCTOR. FLUORESCENT DIMMING CIRCUITS SERVING DIMMING BALLASTS SHALL BE PROVIDED WITH WIRING AS REQUIRED BY BALLAST MANUFACTURER. MULTIPLE PHASE LIGHTING CIRCUITS SERVING DIMMED LOADS SHALL NOT SHARE COMMON NEUTRALS.
 - DISCONNECT SWITCH, 240 OR 600 VOLTS AS REQUIRED. AMPS, POLES AND FUSING AS NOTED, NEMA 1, U.O.M.
 - ⊕ MOTOR RATED SWITCH, MOUNT WITHIN SIGHT OF EQUIPMENT.
 - ⊕ KEYNOTE.
- SPECIAL SYSTEMS**
- TELEPHONE/TELEVISION BACKBOARD, 4" X 4" X 3/4" THICK EXTERIOR GRADE PLYWOOD. MOUNT VERTICALLY WITH BOTTOM OF PLYWOOD 6" AFF., U.O.M.
- ABBREVIATIONS**
- A - AMPERES
 - A.F.F. - ABOVE FINISHED FLOOR
 - A.F.G. - ABOVE FINISHED GRADE
 - B.F.G. - BELOW FINISHED GRADE
 - C - CONDUIT
 - E.T.R. - EXISTING TO REMAIN
 - F - FUSE
 - GFI - GROUND FAULT CIRCUIT INTERRUPTING
 - G - GROUND
 - NVA - NILO VOLT AMP
 - NW - NELOWATT
 - MCB - MAIN CIRCUIT BREAKER
 - MLO - MAIN LUG ONLY
 - NYS - NOT TO SCALE
 - P - POLE
 - PNL - PANEL
 - SN - SOLID NEUTRAL
 - UNLESS OTHERWISE NOTED
 - V - VOLTS
 - W - WIRE
 - WP - WEATHERPROOF
- UTILITY NOTES:**
- PRIOR TO ANY EXCAVATION CONTRACTOR SHALL HAVE ALL EXISTING UNDERGROUND UTILITIES LOCATED.
- FIRE PROOFING NOTES:**
- ELECTRICAL CONTRACTOR SHALL BE RESPONSIBLE FOR PROVIDING FIRE STOPPING AT ALL WALL, FLOOR AND CEILING PENETRATIONS WHERE CONDUIT PENETRATIONS OCCUR.
 - PROVIDE FIRE STOPPING AT CONDUIT PENETRATIONS PER ILL.

LIGHTING FIXTURE SCHEDULE						
TYPE	DESCRIPTION	MOUNT	VOLTS	LAMPS	MANUFACTURER	REMARKS
OA	150 WATT METAL HALIDE POLE MOUNTED DECORATIVE CUT-OFF FIXTURE, HEAVY GAUGE ALUMINUM HOUSING. FINISH PER ARCHITECT. PROVIDE WITH 12'-0" POLE. R2 DISTRIBUTION. AM AS INDICATED.	12FT POLE	208V	150W M.H.	SELUX #SAC-R2-1-H15076	①
OA2	150 WATT METAL HALIDE POLE MOUNTED DECORATIVE CUT-OFF FIXTURE, HEAVY GAUGE ALUMINUM HOUSING. FINISH PER ARCHITECT. PROVIDE WITH 10'-0" POLE. R5 DISTRIBUTION.	10FT POLE ON BRICK PER	208V	150W M.H.	SELUX #SAC-R5-1-H15076	②
OA3	150 WATT METAL HALIDE POLE MOUNTED DECORATIVE CUT-OFF FIXTURE, HEAVY GAUGE ALUMINUM HOUSING. FINISH PER ARCHITECT. PROVIDE WITH 12'-0" POLE. R5 DISTRIBUTION.	12FT POLE	208V	150W M.H.	SELUX #SAC-R5-1-H15076	①
OB	150 WATT METAL HALIDE POLE MOUNTED DECORATIVE CUT-OFF FIXTURE, HEAVY GAUGE ALUMINUM HOUSING. SINGLE HEAD. FINISH PER ARCHITECT. PROVIDE WITH 18'-0" POLE. WIDE BEAM DISTRIBUTION.	18FT POLE	208V	150W M.H.	SELUX #S453-1-3T-H15076	①
OC	150 WATT METAL HALIDE POLE MOUNTED DECORATIVE CUT-OFF FIXTURE, HEAVY GAUGE ALUMINUM HOUSING. DOUBLE HEAD. FINISH PER ARCHITECT. PROVIDE WITH 18'-0" POLE. WIDE BEAM DISTRIBUTION.	18FT POLE	208V	150W M.H.	SELUX #S453-2-3T-H15076	①

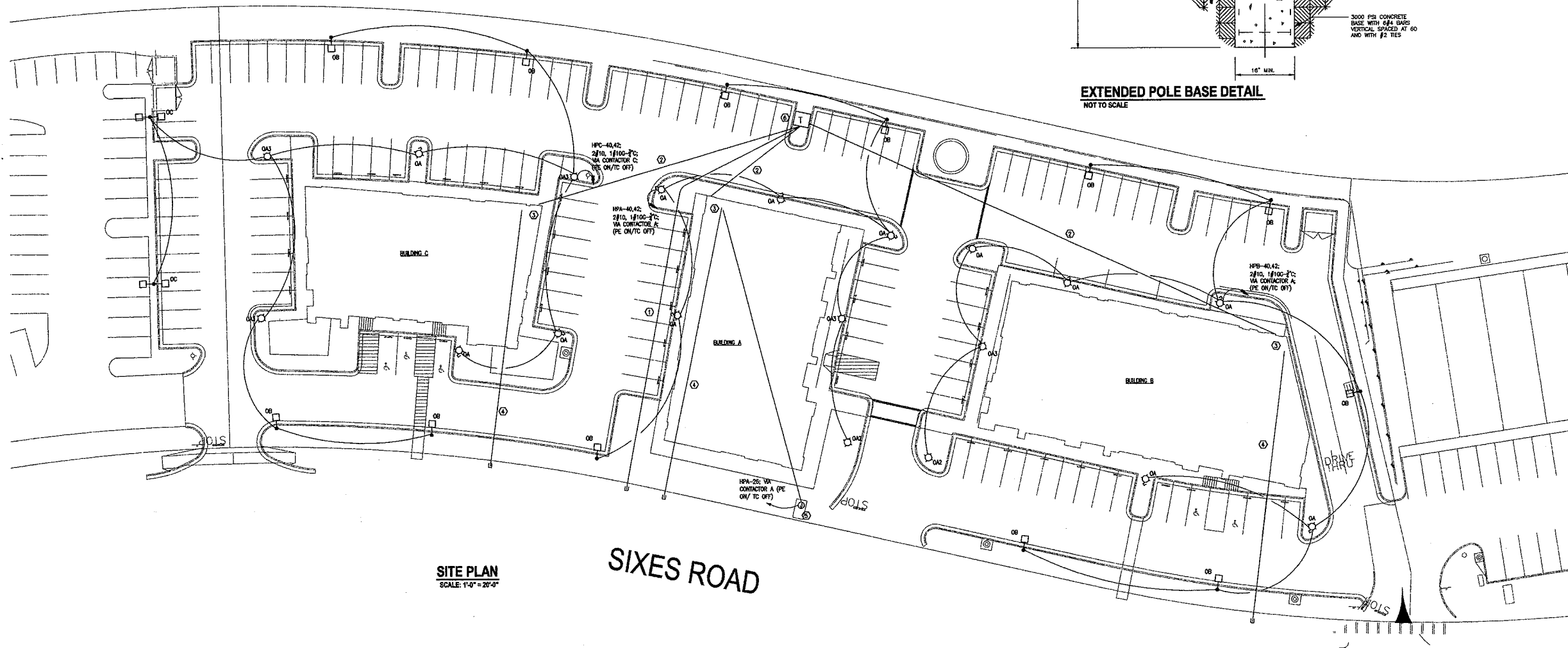
NOTES
 ① REFER TO POLE BASE DETAIL THIS SHEET.
 ② REFER TO ARCHITECTURAL DETAILS FOR MOUNTING.

KEYNOTES

- ① PROVIDE (3) 4" SCHEDULE 40 PVC CONDUITS, 42" ØFG MINIMUM WITH 36" RADIUS ELLS AT TRANSFORMER PAD. COORDINATE EXACT REQUIREMENTS WITH UTILITY.
- ② SECONDARY CONDUIT AND WIRING PER POWER Riser DIAGRAM.
- ③ APPROXIMATE LOCATION OF ELEC ROOM.
- ④ PROVIDE (2) 4" AND (1) 2" FOR TELEPHONE/CATV SERVICE TO DATA ROOM. COORDINATE EXACT REQUIREMENTS WITH UTILITIES.
- ⑤ MOUNTING SHOWN 150V. 1PH. PROVIDE POWER CONNECTION AND 1" WITH PULLWIRE TO TELEPHONE BACKBOARD. REFER TO ARCHITECTURAL PLANS FOR EXACT LOCATION.
- ⑥ PAD MOUNTED TRANSFORMER, PAD AND TRANSFORMER BY UTILITY. COORDINATE EXACT LOCATION WITH POWER COMPANY.



EXTENDED POLE BASE DETAIL
 NOT TO SCALE



SITE PLAN
 SCALE: 1/4" = 20'-0"

SIXES ROAD

THE CROSSING @ SIXES



MIRICK ENGINEERING, INC.
 3585 Hoberham at Northlake
 Tucker, Georgia 30084
 TEL (770)-491-7848
 FAX (770)-491-7858
 27085

Revisions

Revision History

Number	Date	Description
06-20-2007		RELEASE FOR PERMIT



Job Address
 SIXES ROAD
 CHEROKEE COUNTY, GA

Drawing Title

SITE PLAN

Drawing Status

RELEASED FOR PERMIT

Drawing Number

E3.1

