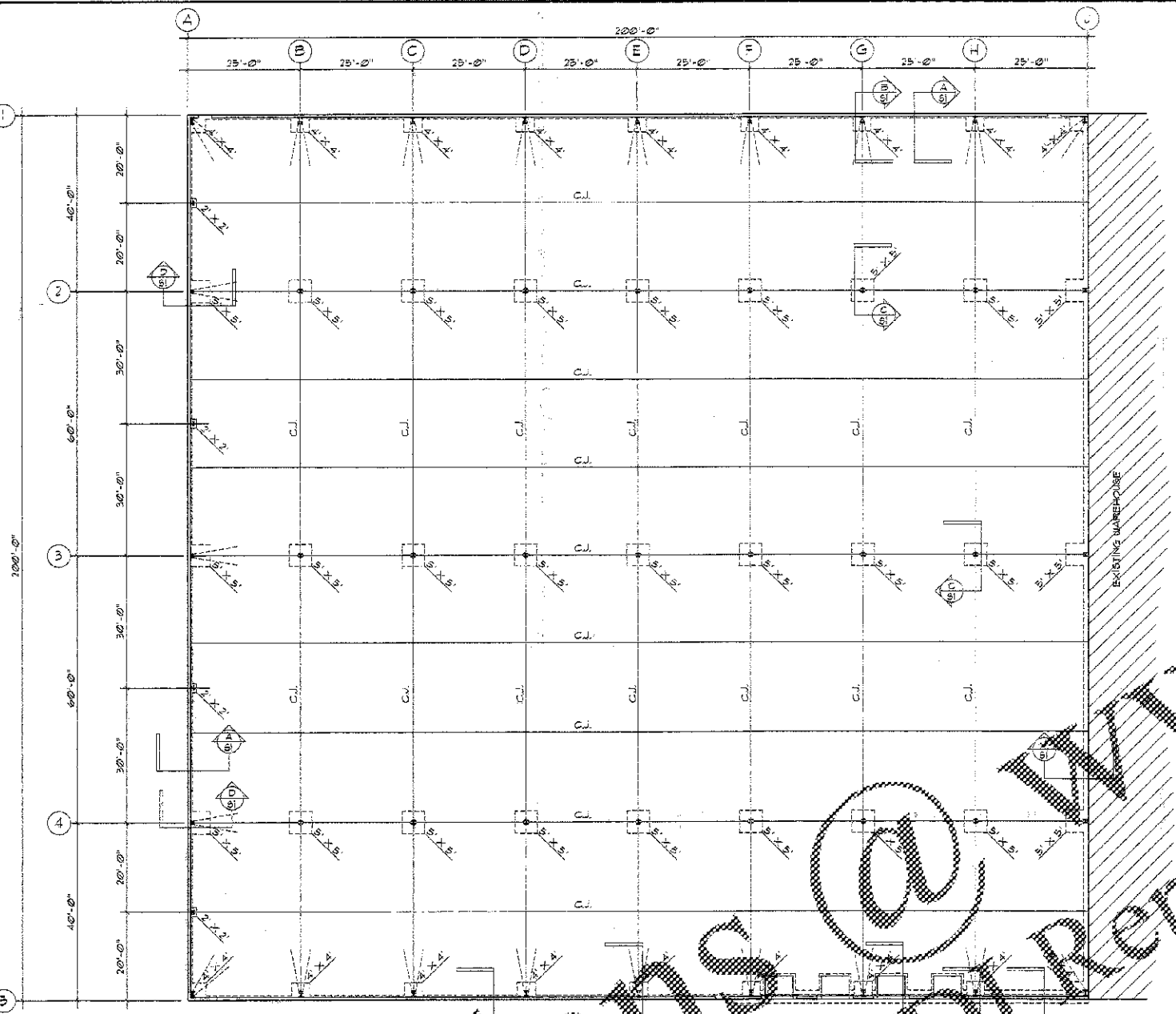


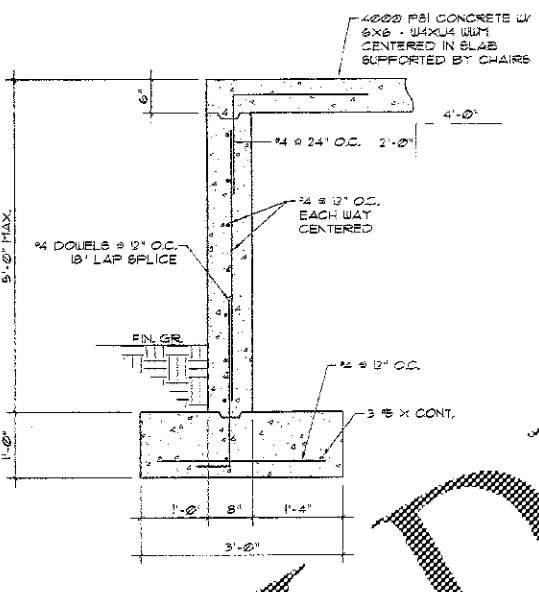
- GENERAL NOTES:
- COORDINATE THESE DRAWINGS WITH THE EXISTING CONDITIONS AND ARCHITECTURAL DRAWINGS. THE FOUNDATION IS DESIGNED USING A SOIL BEARING CAPACITY OF 2000 PSF. CONTRACTOR SHALL VERIFY THAT THE BEARING CAPACITY IS ADEQUATE BEFORE CONCRETE IS CAST. IF THE EXISTING CONDITIONS VARY FROM WHAT IS SHOWN OR IF SOIL BEARING CAPACITY IS QUESTIONABLE, THE ENGINEER IS TO BE NOTIFIED IMMEDIATELY.
 - REMOVE ALL TOPSOIL, ROOT SYSTEM OR OTHER DEBRIS FROM MATERIAL UNDER PROPOSED SLAB AND COLUMN FOOTINGS. REPLACE WITH SUITABLE COMPACTED FILL OR CRUSHED STONE. ENGINEER'S OPINION ON QUESTIONABLE MATERIAL SHALL BE FINAL.
 - ALL BUILDING AREAS SHALL BE COMPACTED TO 95% OF MAXIMUM DRY DENSITY AT OPTIMUM MOISTURE CONTENT AS DETERMINED IN ACCORDANCE WITH ASTM D 1557 - CURRENT EDITION.
 - COORDINATE THESE DRAWINGS WITH THE DRAWINGS FROM THE BUILDING MANUFACTURER. THESE DRAWINGS ARE FOR THE FOUNDATION ONLY. FOUNDATION HAS BEEN DESIGNED ON PRELIMINARY REACTIONS. FINAL REACTION AND ANCHOR BOLT DRAGS FROM THE BUILDING MANUFACTURER MUST BE SUBMITTED FOR REVIEW.
 - ALL FOOTINGS TO BE CENTERED UNDER THE COLUMNS OR WALLS THEY SUPPORT, UNLESS NOTED OTHERWISE ON THE DRAWING.
 - WHEN A DETAIL IS SHOWN FOR ONE CONDITION, IT SHALL ALSO APPLY FOR ALL LIKE SIMILAR CONDITIONS, UNLESS NOTED OTHERWISE.
 - EXTEND ALL FOOTING REINFORCEMENT TO FAR SIDE OF FOOTING, TYPICALLY ALLOWING 3 INCHES OF COVER.
 - ALL CONCRETE SHALL HAVE A MINIMUM 28-DAY COMPRESSIVE STRENGTH OF 4000 PSI.
 - CONCRETE REINFORCING STEEL SHALL COMPLY WITH THE REQUIREMENTS OF ASTM A63, GRADE 60 AND BE FREE OF ANY FORM RELEASE AGENTS. ALL ANCHOR BOLTS SHALL BE SIZE AND STRENGTH SPECIFIED BY THE BUILDING MANUFACTURERS.
 - APPLY ONE COAT OF CURING COMPOUND BY DAYTON SUPERIOR IN ACCORDANCE WITH MANUFACTURERS RECOMMENDATIONS. AFTER 7 DAYS, APPLY ONE COAT OF SEALER/HAIRFINER BY DAYTON SUPERIOR IN ACCORDANCE WITH MANUFACTURERS RECOMMENDATION. ANY OTHER PRODUCT MUST BE PRE-APPROVED BY ARCHITECT.



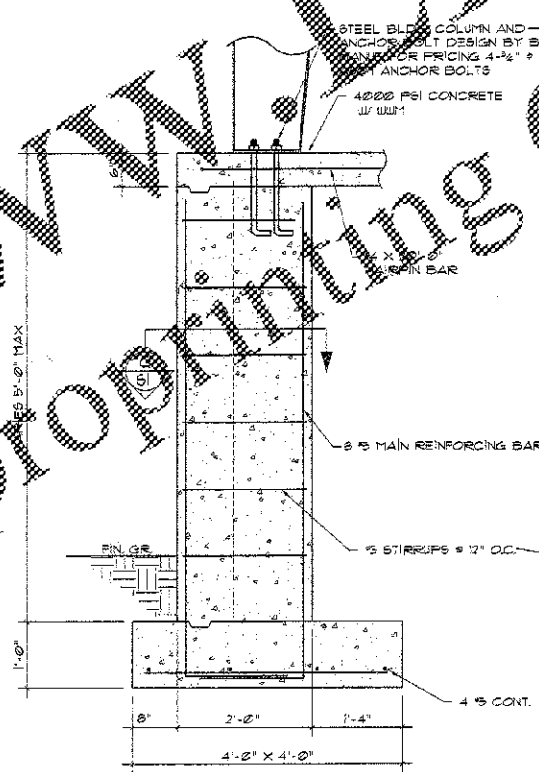
FOUNDATION PLAN
SCALE: 1/8" = 1'-0"

NOTE: THIS DRAWING IS FOR PERMIT ONLY.

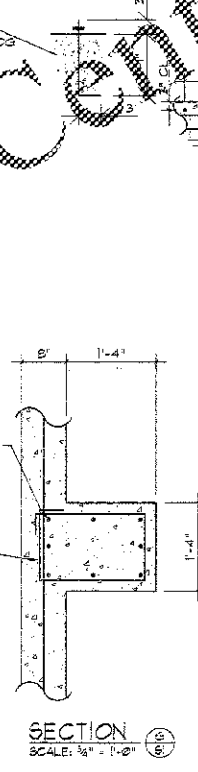
NOT FOR CONSTRUCTION



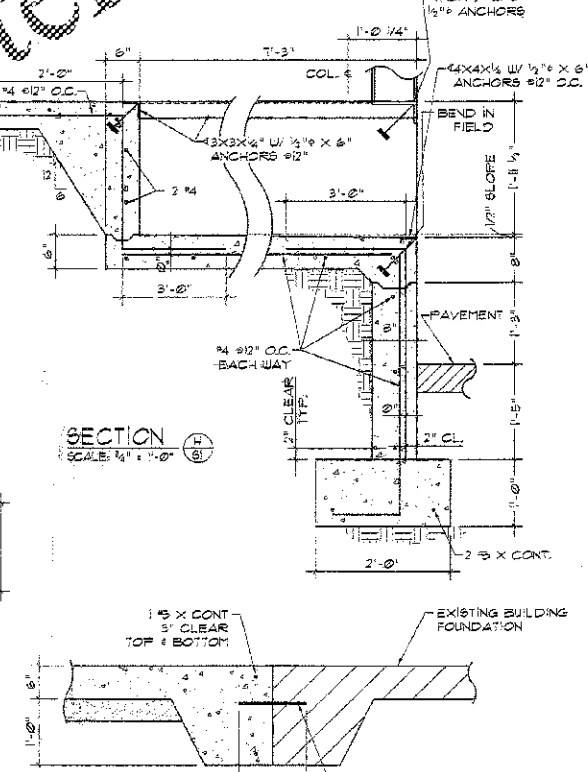
SECTION A-A
SCALE: 1/4" = 1'-0"



SECTION B-B
SCALE: 1/4" = 1'-0"

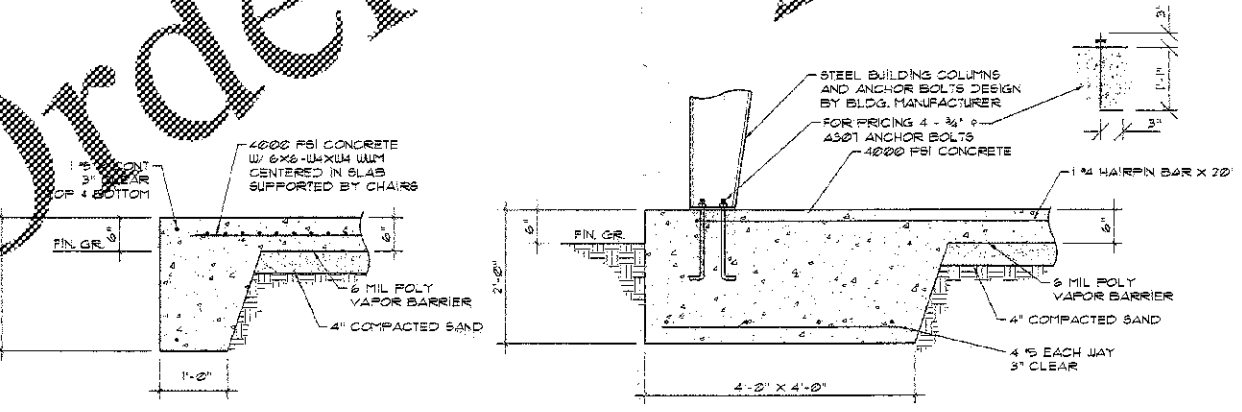


SECTION C-C
SCALE: 3/8" = 1'-0"

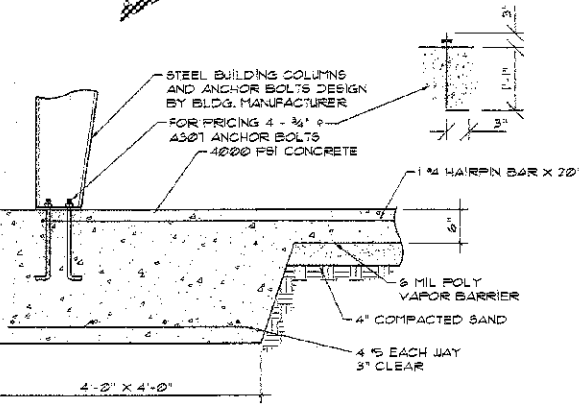


SECTION D-D
SCALE: 1/4" = 1'-0"

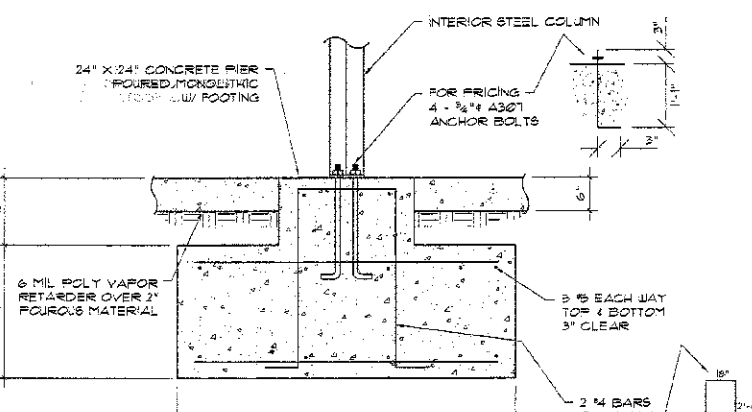
SECTION E-E
SCALE: 1/4" = 1'-0"



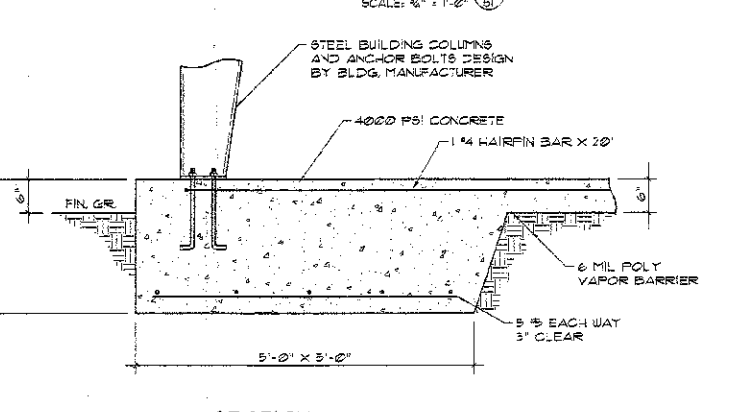
SECTION A-A
SCALE: 1/4" = 1'-0"



SECTION B-B
SCALE: 1/4" = 1'-0"



SECTION C-C
SCALE: 1/4" = 1'-0"



SECTION D-D
SCALE: 1/4" = 1'-0"

Order Plans @ WKKWLDI.com

2007 LDR Reprinting Centers

SHEET TITLE

REVISIONS

JOB TITLE

AN ADDITION FOR:
CONFEDERATE PACKAGING
DAVID WOODBURN
DUBLIN, GEORGIA

Drawn: Proj no.
C. CONCEPCION 06-194
Checked: Date
C. KORNEGAY 11/08/06
Sheet Number