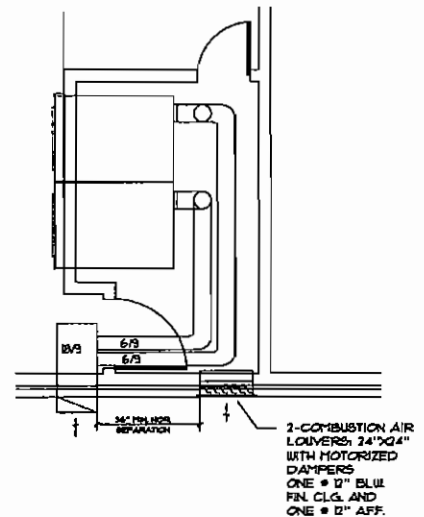
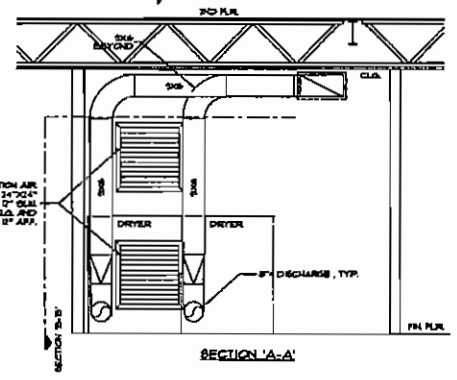
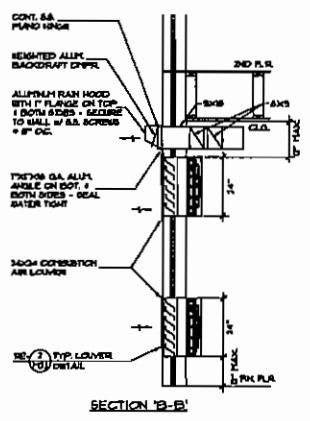


TO ORDER PLANS GO TO [Idiline.com](http://idiline.com)

MAIN LEVEL FLOOR PLAN HEATING, VENTILATING AND AIR CONDITIONING LAYOUT
SCALE 1/8" = 1'-0"

- BEHIND POOL HVAC NOTES**
1. POINT DEWPOINT UNIT AT LOCATION SHOWN. PROVIDE ACCESS TO ALLOW SERVICING OF FILTERS AND REPAIRS.
 2. INSTALL IN STRICT ACCORDANCE WITH MANUFACTURERS INSTALLATION INSTRUCTIONS. UNIT SHALL BE EQUIPPED TO HEAT POOL WATER AND PROVIDE COOLING IN SUMMER BY THE APPLICATION OF A REVERSE AIR-COOLED CONDENSOR NEEDED TO MATCH UNIT CAPACITY.
 3. SIZE REFRIGERANT PIPING IN ACCORDANCE WITH MANUFACTURERS RECOMMENDATION.
 4. ALL DUCTWORK SHALL BE CONSTRUCTED AND INSTALLED IN ACCORDANCE WITH MACHINERY LOW PRESSURE DUCT CONSTRUCTION STANDARDS FOR GALVANIZED STEEL SHEET.
 5. ALL CONCEALED HVAC DUCTWORK SHALL BE INSULATED WITH 1-1/2" THICK FIBERGLASS DUCT INSULATION WITH WHITE VINYL VAPOR BARRIER. ALL DUCTWORK INSIDE MECH ROOM SHALL BE LINED WITH P DUCT DUCT LINER. DUCTWORK EXPOSED IN CONDITIONED SPACE SHALL NOT BE INSULATED. PAINT EXPOSED DUCT TO MATCH SURROUNDING AREA.
 6. ALL TURNS IN DUCTWORK SHALL BE MADE WITH 90 DEGREE ELBOWS.
 7. ALL SUPPLY GRILLERS UNLESS OTHERWISE NOTED SHALL BE METALARE MODEL 4680N1 DOUBLE DEFLECTION ALUMINUM REGISTER OF THE SIZE INDICATED ON Dwg WITH MANUAL VOLUME DAMPER.
 8. RETURN GRILLER UNLESS OTHERWISE NOTED SHALL BE METALARE MODEL 4680N1 DOUBLE DEFLECTION ALUMINUM REGISTER OF THE SIZE INDICATED ON Dwg WITH MANUAL VOLUME DAMPER. REGISTER SHALL BE ALUMINUM CONSTRUCTION 1/2" x 1/2" CORE.
 9. ALL OUTSIDE AIR LOWERS UNLESS OTHERWISE SPECIFIED SHALL BE GREENHECK MODEL 851-481 ALUMINUM LOWERS COLOR TO MATCH DECOR OF FACILITY WITH VESTIBULE SCREENS.
 10. DEWPOINT UNIT SHALL BE DESERT AIR MODEL FPM 500 RATED AT 2500 CFM WITH PROVISIONS FOR CO COIL OUTSIDE AIR. UNIT SHALL BE CAPABLE OF RETURNING 75% LOAD OF HUMIDITY AT INTERIOR CONDITIONS OF 80° 60% RH.
 11. ALL PENETRATIONS IN RATED WALLS, FLOORS AND CEILING SHALL BE SEALED WITH FIRE CALLONS. HVAC DUCTWORK IN SAME SHALL BE OF THE APPROPRIATE MATERIAL WITH UL LISTED FIRE DAMPERS AS REQUIRED BY THE IBC.



ENLARGED PLAN AND SECTIONS @ DRYER SERVICE 145
SCALE: NONE

RELEASED FOR CONSTRUCTION
DATE 3/12/07 BY: CTW

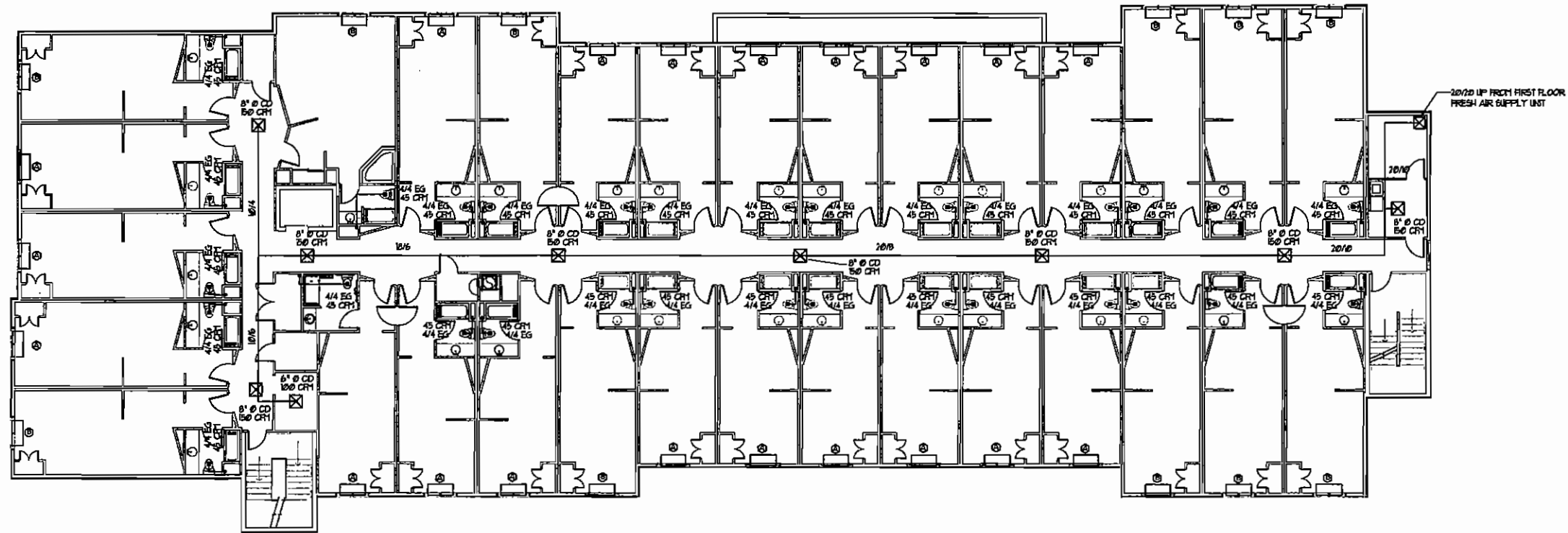
PROPOSED 75 ROOM MOTEL FOR
COMFORT SUITES
MACON, GEORGIA
SHERUTI CORPORATION, OWNER



Wolf & Associates Architects
MACON, GEORGIA - 408 HUNTER ROAD, 2ND FLOOR
PHONE 779-742-4410 FAX 779-742-4418
1000 W. BROADWAY, SUITE 1000
DALLAS, TEXAS 75201
PHONE 214-752-8855 FAX 214-752-8855

DATE 2/21/07
SHEET NO. M1.1

PRK Services
1745 Railway Road
Macon, Georgia 31204



SECOND LEVEL FLOOR PLAN HEATING VENTILATING AND AIR CONDITIONING LAYOUT

TO ORDER PLANS GO TO idiline.com

Mark	CFM	ESP (in)	Cooling		Heating		Supply Fan	
			Capacity (MBH)	Ent Air	Capacity (MBH)	Ent Air	HP	FRPM
MU-1	336R	0.72	186.4	96.00	208.00	208.00	28.00	916

- Remarks:
- Factory assembled, piped, wired and tested as a single package
 - Unit shall include a 100% outside air hood with a position motorized damper
 - Unit shall include a-stage cooling, a compressor circuits with interlock-circuit DX coil (Horizontal split not acceptable)
 - Unit shall include a stage heating with stainless steel heat exchanger with a 25 year warranty (parts only)
 - Unit shall include Hot gas bypass for coil frost protection at less than design ambient conditions. Cycling of compressor via froststat not acceptable
 - Unit shall include MODULATING hot gas reheat coil for dehumidification (a position or dedicated reheat circuit not acceptable)
 - Unit shall include a factory governed 115V service outlet
 - Unit shall include manual reset high pressure switches & auto reset low pressure switches
 - Unit shall include Condenser fan cycling control
 - Unit shall include 2 inch, 30% pleated filters
 - Control: Watimar/Oriem VCM controller with ambient dewpoint sensor; electronic sequencing of compressors, heating and mod. The location of this unit is to provide continuous dehumidification of outside air to a maximum of 55 degree dewpoint while field mounted controls shall include a duct mounted leaving air stat and a wall mounted stat (see plans for location) All unit mounted controls for complete operation shall be installed by the equipment manufacturer
 - Unit shall include a 30" high factory assembled and insulated roof curb/plenum
 - Stainless steel drain pan
 - Phase monitor
 - Supply air smoke detector
 - Integral non-fused disconnect switch
 - Compressor shall have 5 year warranty (parts only)
 - Design Basis is Lennox, Dectron, McQuay, Mammoth or Governor.

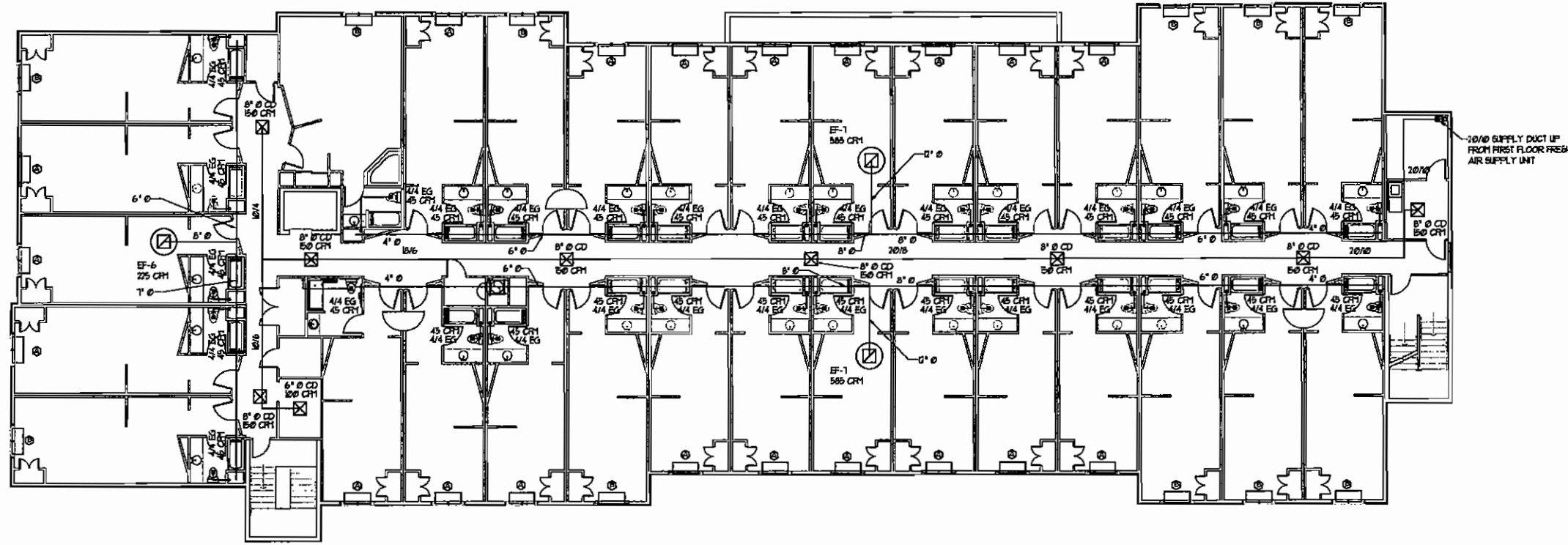


Wolf & Associates Architects
MACON, GEORGIA - 440 HYMAN ROAD, 2ND FLOOR
TEL: 478-741-4111 FAX: 478-741-4110
MEMPHIS, TENNESSEE OFFICE: 740 DENNIS COVE ROAD, 2ND FL
TEL: 901-528-8995 FAX: 901-528-8995

DATE: 2/26/07

RELEASED FOR CONSTRUCTION
DATE: 2/12/07 BY: *ew*

SHEET NO.
M1.2



THIRD LEVEL FLOOR PLAN HEATING, VENTILATING AND AIR CONDITIONING LAYOUT
TO ORDER PLANS GO TO Idiline.com

PRK Services
 Macon, Georgia 31220
 1245 Maconway Road

PROPOSED 75 ROOM MOTEL FOR
COMFORT SUITES
 MACON, GEORGIA
 SHRUTI CORPORATION, OWNER

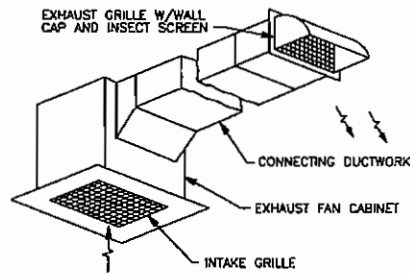


Wolf & Associates Architects
 MACON, GEORGIA • 400 BROADWAY SUITE 201, 31210
 PHONE 779-741-0815 FAX 779-741-1588
 KENNESAW, GEORGIA • 740 KENNESAW CIRCLE ROAD, 30141
 PHONE 770-424-8800 FAX 770-424-8800

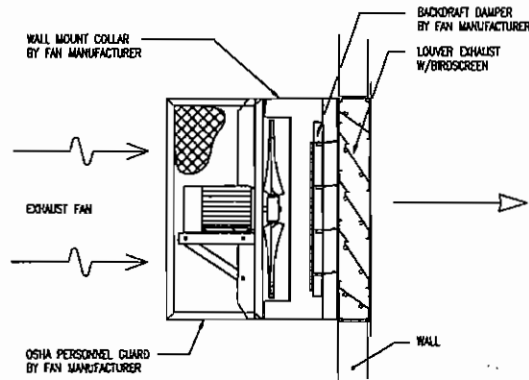
DATE 2/26/07

RELEASED FOR CONSTRUCTION
 DATE 3/12/07 BY: *STW*

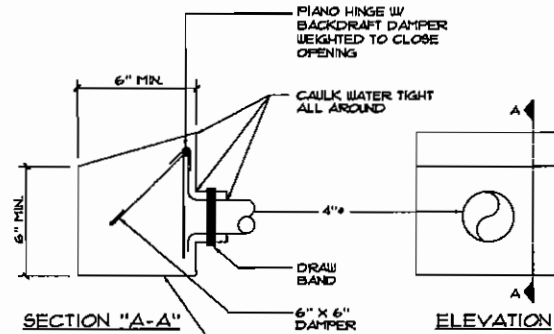
SHEET NO.
M1.3



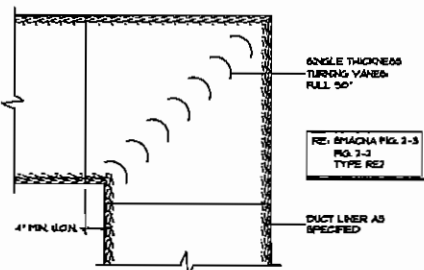
CEILING EXHAUST FAN DETAIL
N.T.S.



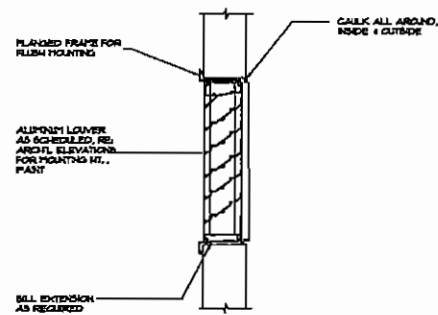
WALL FAN DETAIL
N.T.S.



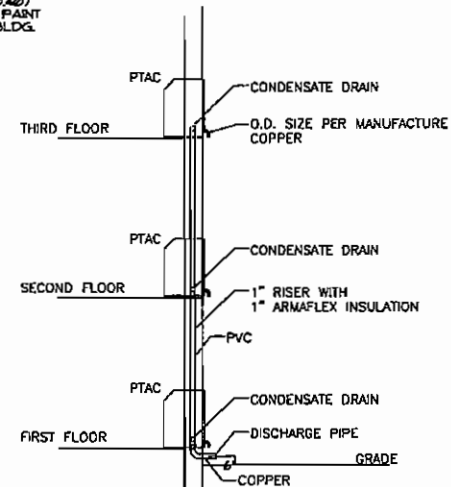
SECTION "A-A"
ELEVATION



6 TYP. RECT. ELBOW DETAIL
SCALE: NOT TO SCALE



3 TYP. WALL LOUVER DETAIL
SCALE: NOT TO SCALE



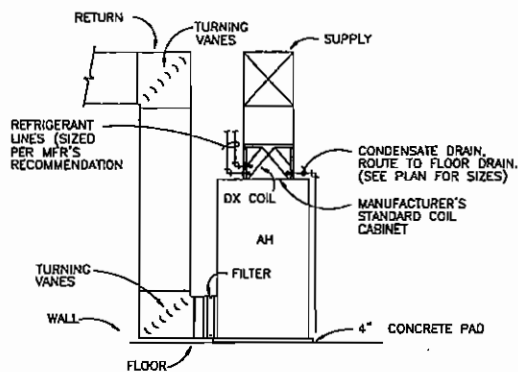
1 DETAIL PTAC UNIT DRAIN CONNECTION
SCALE: NONE

LEGEND	
SYMBOL	DESCRIPTION
AH	AIR HANDLING UNIT
CD	CEILING DIFFUSER
CFM	CUBIC FEET PER MINUTE
CU	CONDENSING UNIT
EF	EXHAUST FAN
EG	EXHAUST GRILLE
FB	FIRE BARRIER
OA	OUTSIDE AIR
RO	ROUND
RA	RETURN AIR GRILLE
TS	THERMOSTAT
TY	TYPICAL

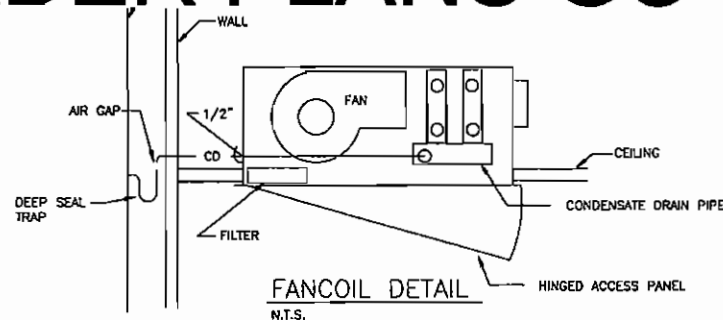
EXHAUST FAN SCHEDULE						
MARK	TYPE	CFM	HP	WARRANTY	NOTES	QTY
EF-1	EXHAUST FAN	100	1/2	5 YEAR		1
EF-2	EXHAUST FAN	200	1/2	5 YEAR		1
EF-3	EXHAUST FAN	300	1/2	5 YEAR		1
EF-4	EXHAUST FAN	400	1/2	5 YEAR		1
EF-5	EXHAUST FAN	500	1/2	5 YEAR		1
EF-6	EXHAUST FAN	600	1/2	5 YEAR		1
EF-7	EXHAUST FAN	700	1/2	5 YEAR		1
EF-8	EXHAUST FAN	800	1/2	5 YEAR		1
EF-9	EXHAUST FAN	900	1/2	5 YEAR		1
EF-10	EXHAUST FAN	1000	1/2	5 YEAR		1

AIR HANDLING UNIT SCHEDULE						
MARK	LOCATION	TYPE	CFM	COOLING CAPACITY (BTU)	HEATING CAPACITY (BTU)	MODEL NO.
AH-1	MECHANICAL ROOM	VERTICAL HEAT PUMP	1000	500	10,000	12,000
AH-2	MECHANICAL ROOM	VERTICAL HEAT PUMP	2000	400	40,000	46,000
AH-3	ADJ. AREA	HORIZONTAL FAN COIL UNIT	15	30,000	21,000	
AH-4	LAUNDRY ROOM	FAN COIL UNIT	100	500	20,000	21,000
PU-1	OUTSIDE	PACKAGED GAS FUELED UNIT	1365	1365	240,000	21,500

CONDENSING UNIT SCHEDULE						
MARK	CAPACITY	TYPE	VOLTS	PH	TRADE MODEL NO.	NOTES
CU-1	10,000	AIR COOLED HEAT PUMP	208	3	77M400A0000A	
	20,000	AIR COOLED HEAT PUMP	208	3	77M400A0000A	
	30,000	AIR COOLED HEAT PUMP	208	3	77M400A0000A	
CU-4	30,000	AIR COOLED HEAT PUMP	208	3	77M400A0000A	



N.T.S.

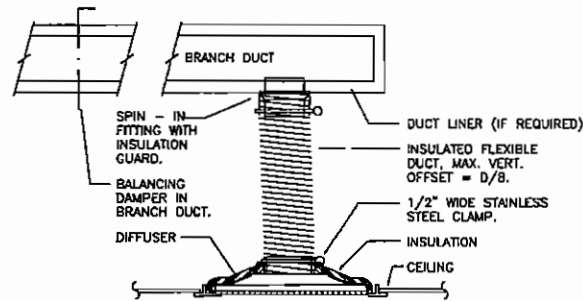


FANCOIL DETAIL
N.T.S.

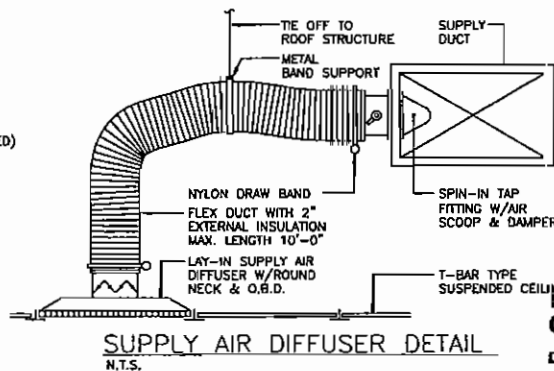
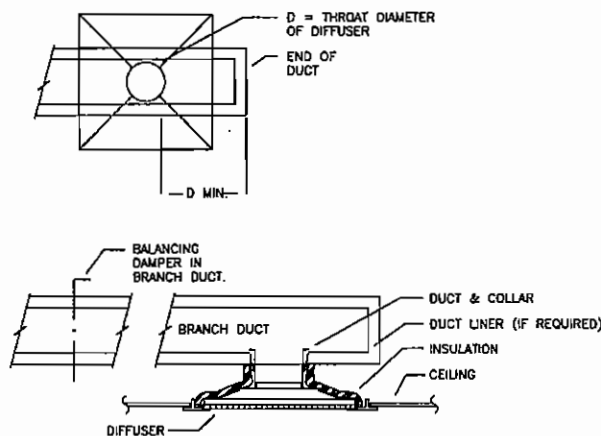
- DRIVING POOL HVAC NOTES**
1. MOUNT CONDENSING UNIT AT LOCATION SHOWN. PROVIDE ACCESS TO ALLOW SERVICING OF FILTERS AND MOTORS.
 2. INSTALL IN STRICT ACCORDANCE WITH MANUFACTURER'S INSTALLATION INSTRUCTIONS. UNIT SHALL BE EQUIPPED TO HEAT POOL WATER AND PROVIDE COOLING IN SUMMER BY THE APPLICATION OF A REVERSE AIR COOLED CONDENSING COIL TO MATCH UNIT CAPACITY.
 3. SIZE REFRIGERANT PIPING IN ACCORDANCE WITH MANUFACTURER'S RECOMMENDATION.
 4. ALL DUCTWORK SHALL BE CONSTRUCTED AND INSTALLED IN ACCORDANCE WITH SMACNA LOW PRESSURE DUCT CONSTRUCTION STANDARDS FOR ALUMINUM SHEET METAL.
 5. ALL CONCEALED HVAC DUCTWORK SHALL BE INSULATED WITH 1-1/2" THICK FIBERGLASS DUCT INSULATION WITH WHITE VINYL VAPOR BARRIER. ALL DUCTWORK INSIDE MECH ROOM SHALL BE LINED WITH 1" THICK DUCT LINER. DUCTWORK EXPOSED IN CONDITIONED SPACE SHALL NOT BE INSULATED. PAINT EXPOSED DUCT TO MATCH SURROUNDING AREA.
 6. ALL TURNS IN DUCTWORK SHALL BE MADE WITH TURNING VANES.
 7. ALL SUPPLY GRILLES UNLESS OTHERWISE NOTED SHALL BE METALARE MODEL 4800R1 DOUBLE COLLECTION ALUMINUM REGISTER OF THE SIZE INDICATED ON DED WITH MANUAL VOLUME DAMPER.
 8. RETURN GRILLES UNLESS OTHERWISE NOTED SHALL BE METALARE MODEL 4800R1 DOUBLE COLLECTION ALUMINUM REGISTER WITH MANUAL VOLUME DAMPER. REGISTERS SHALL BE ALUMINUM CONSTRUCTION 1/2" x 1/2" CORE.
 9. ALL OUTSIDE AIR LOUVERS UNLESS OTHERWISE NOTED SHALL BE GREENNECK MODEL ESJ-48 ALUMINUM LOUVERS COLOR TO MATCH COLOR OF FACILITY WITH INSECT SCREENS.
 10. CEILING GRILLES SHALL BE PRIME ANNE MODEL P03 500 RATED AT 2000 CFM WITH PROVISION FOR 400 CFM OUTSIDE AIR. UNIT SHALL BE CAPABLE OF PROVIDING 750 LBARS OF POSITIVE AT INTERIOR CONDITIONS OF 80 F/60 RH.
 11. ALL PENETRATIONS IN RATED WALLS, FLOORS AND CEILING SHALL BE SEALED WITH FIRE CALLING. HVAC DUCTWORK IN BARE SHALL BE OF THE APPROPRIATE MATERIAL WITH UL LISTED FIRE DAMPERS AS REQUIRED BY THE NFPA.

NOTES:

1. MOUNT AIR HANDLING UNITS AT LOCATIONS SHOWN. PROVIDE ACCESS TO ALLOW SERVICING OF FILTERS AND MOTORS.
2. ROUTE NEW CONDENSATE DRAIN LINES FULL SIZE OF UNIT CONNECTIONS TO DRAIN. CONDENSATE PIPING SHALL BE SCHEDULE 40 PVC.
3. SIZE REFRIGERANT PIPING IN ACCORDANCE WITH MANUFACTURER'S RECOMMENDATION.
4. ALL DUCTWORK SHALL BE CONSTRUCTED AND INSTALLED IN ACCORDANCE WITH SMACNA LOW PRESSURE DUCT CONSTRUCTION STANDARDS FOR GALVANIZED SHEET METAL.
5. ALL CONCEALED HVAC DUCTWORK SHALL BE INSULATED WITH 1-1/2" THICK FIBERGLASS DUCT INSULATION WITH WHITE VINYL VAPOR BARRIER. ALL DUCTWORK INSIDE MECH ROOM SHALL BE LINED WITH 1" THICK DUCT LINER. DUCTWORK EXPOSED IN CONDITIONED SPACE SHALL NOT BE INSULATED. PAINT EXPOSED DUCT TO MATCH SURROUNDING AREA.
6. ALL TURNS IN DUCTWORK SHALL BE MADE WITH TURNING VANES.
7. ALL CEILING SUPPLY DIFFUSERS, UNLESS OTHERWISE NOTED SHALL BE PRIME MODEL 60D 24 x 24 MODULAR SQUARE STEEL, ADJUSTABLE CEILING DIFFUSER TYPE, FOUR WAY BLOW WITH ROUND NECK OF SIZE INDICATED WITH MANUAL VOLUME DAMPER.
8. ALL CEILING RETURN GRILLES UNLESS OTHERWISE NOTED SHALL BE PRIME MODEL 60D SERIES RETURN REGISTER WITH MANUAL VOLUME DAMPER. REGISTERS SHALL BE STEEL CONSTRUCTION 1/2" x 1/2" CORE.
9. ALL CEILING EXHAUST GRILLES UNLESS OTHERWISE NOTED SHALL BE PRIME MODEL 60D SERIES RETURN REGISTER WITH MANUAL VOLUME DAMPER. REGISTERS SHALL BE STEEL CONSTRUCTION 1/2" x 1/2" CORE.
10. ALL OUTSIDE AIR LOUVERS UNLESS OTHERWISE SPECIFIED SHALL BE GREENNECK MODEL ESJ-48 ALUMINUM LOUVERS COLOR TO MATCH DECOR OF FACILITY WITH INSECT SCREENS.



SUPPLY AIR DIFFUSER DETAIL
N.T.S.



SUPPLY AIR DIFFUSER DETAIL
N.T.S.

RELEASED FOR CONSTRUCTION

DATE 3/12/12 BY: CWD

TO ORDER PLANS GO TO idiline.com