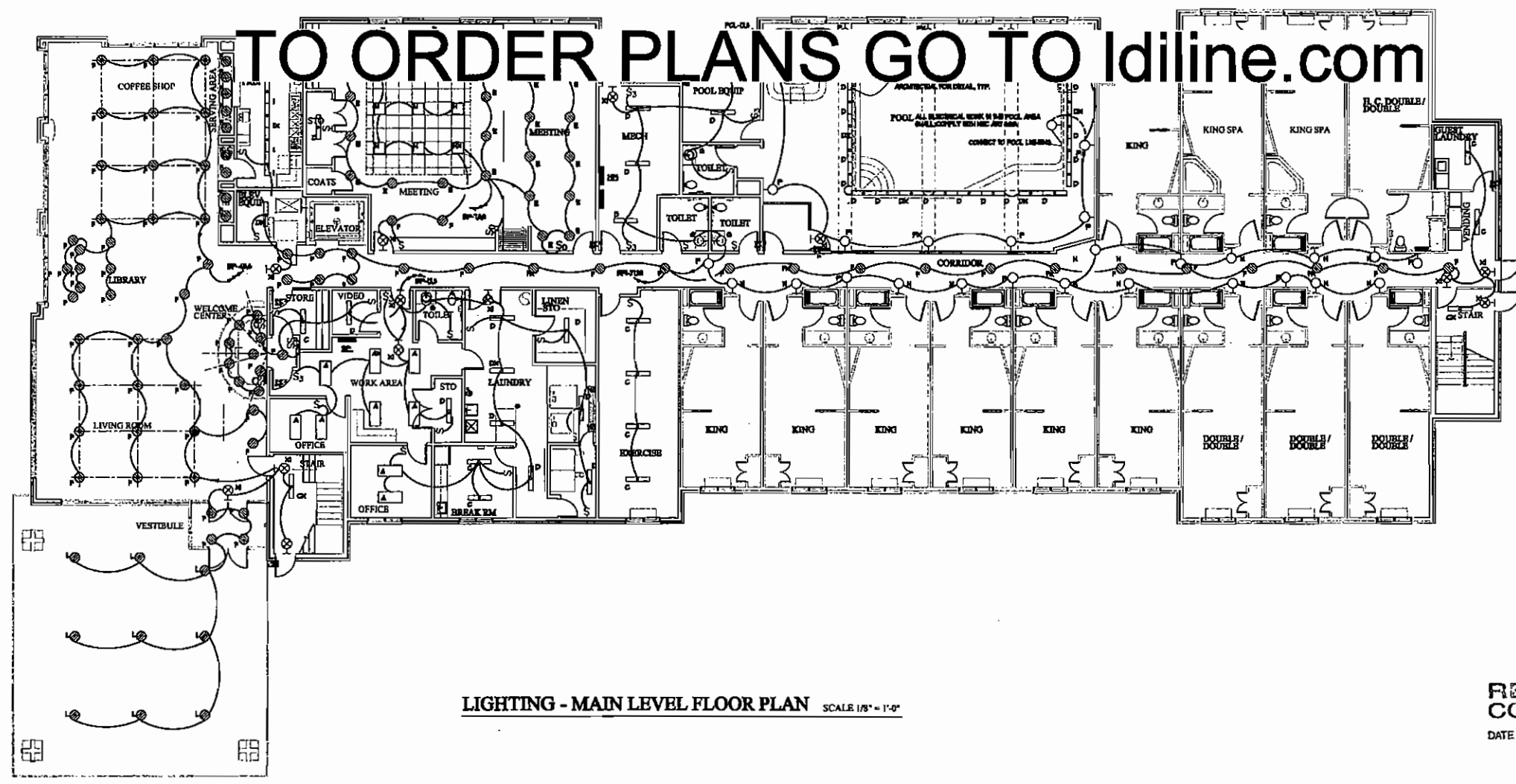


LIGHTING - SECOND & THIRD LEVEL FLOOR PLAN SCALE 1/8" = 1'-0"



LIGHTING - MAIN LEVEL FLOOR PLAN SCALE 1/8" = 1'-0"

PRK Services

1245 Rainey Road
Macon, Georgia 31210

PROPOSED 75 ROOM MOTEL FOR
COMFORT SUITES
MACON, GEORGIA
SHRUTI CORPORATION, OWNER



Wolf & Associates Architects
MACON, GEORGIA 440 STONE EDGE RD, 2ND FL 31210
PHONE 478-741-8111 FAX 478-474-4330
FERRISLANDS, NORTH CAROLINA 740 BERNSE COVER ROAD, 28741
PHONE 828-356-8995 FAX 828-356-8995

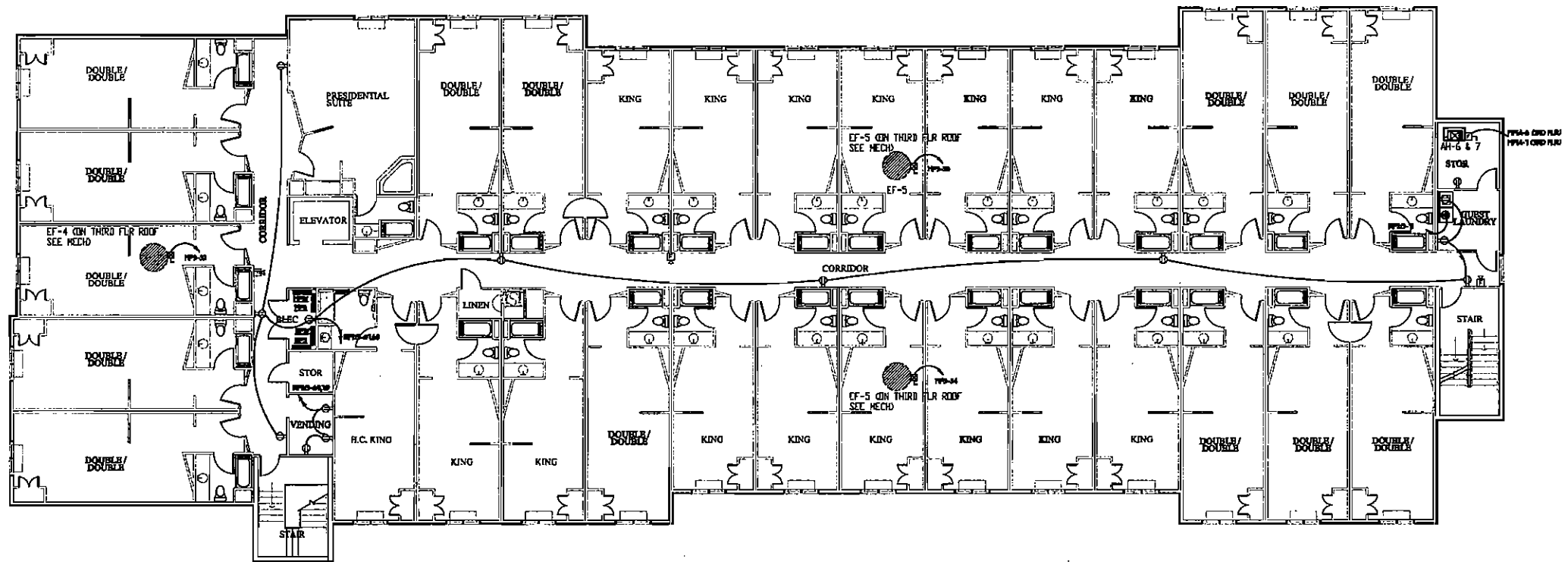
RELEASED FOR CONSTRUCTION
DATE 3/12/07 BY: *PH*

DATE 3/12/07

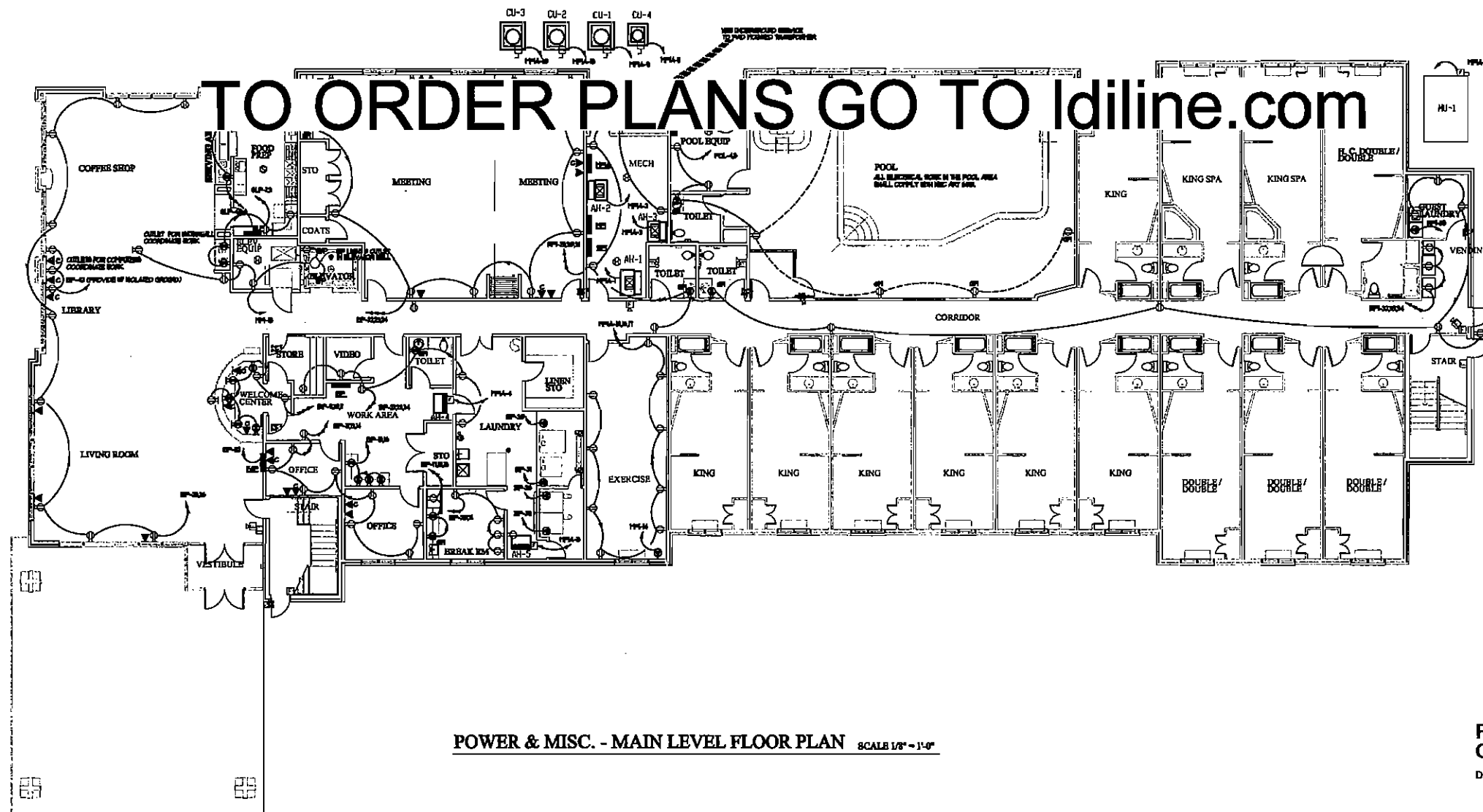
SHEET NO.

E-1

EPHRAIM HUSAMADEEN
DRAWING AND DESIGN SERVICES
400 MCZILL RD
MACON, GEORGIA 31217
TELEPHONE 478-743-9122
FAX 478-743-9122
E-MAIL: eph@idiline.com



POWER & MISC. - SECOND & THIRD LEVEL FLOOR PLAN SCALE 1/8" = 1'-0"



POWER & MISC. - MAIN LEVEL FLOOR PLAN SCALE 1/8" = 1'-0"

RELEASED FOR CONSTRUCTION
 DATE 3/12/07 BY: [Signature]

EPHRAIM HUSAMADEN
 DRAWING AND DESIGN SERVICES
 608 MCALL DR
 MACON, GEORGIA 31217
 PHONE 478-741-8818
 FAX 478-741-8880
 CELL 478-741-8818

PRK Services

PROPOSED 75 ROOM MOTEL FOR
COMFORT SUITES
 MACON, GEORGIA
 SHRUTI CORPORATION, OWNER

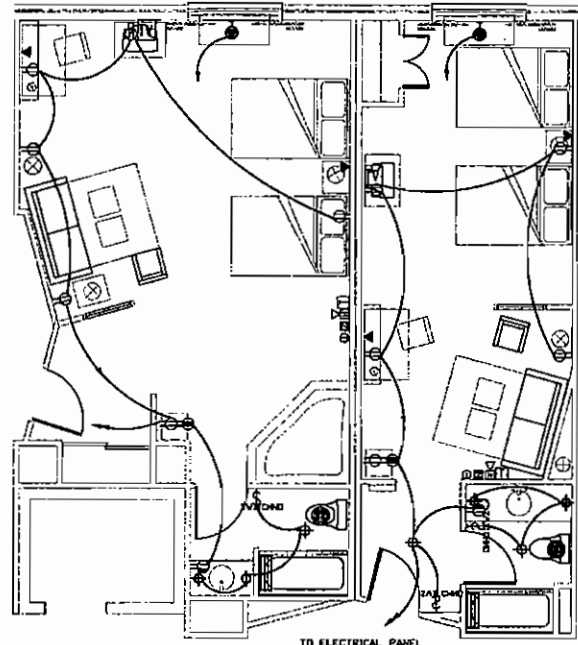


Wolf & Associates Architects
 MACON, GEORGIA 440 STONE EDGE RD, ZIP 31210
 PHONE 478-741-8818 FAX 478-741-8880
 FLORENCE, NORTH CAROLINA 740 TORRES COVER ROAD, 28741
 PHONE 813-536-8997 FAX 813-536-8995

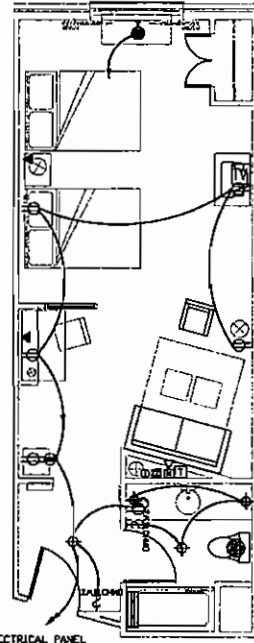
DATE 3/12/07

SHEET NO.
E-2

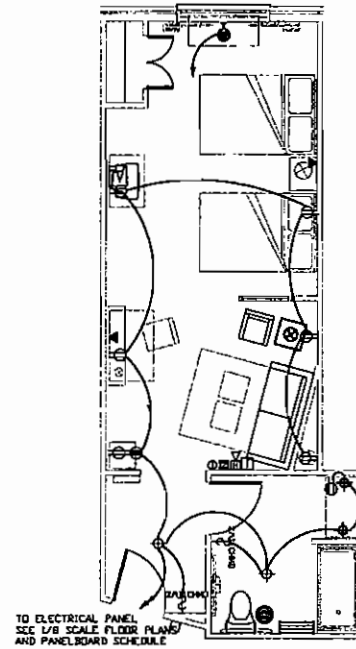
1845 Railway Road
 Macon, Georgia 31220



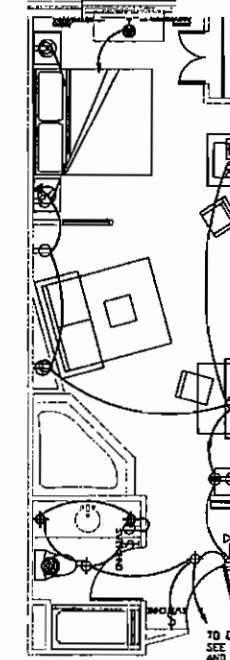
PRESIDENTIAL SUITE DOUBLE DOUBLE



WIDE BAY DOUBLE DOUBLE

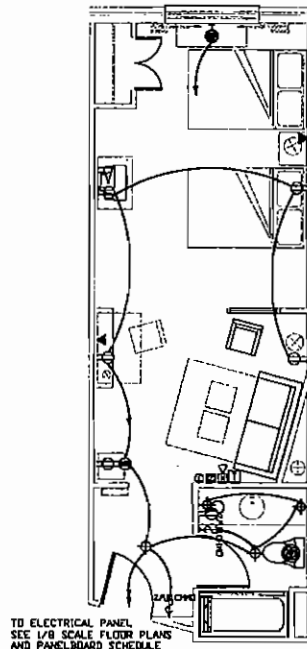


ACC. DOUBLE DOUBLE

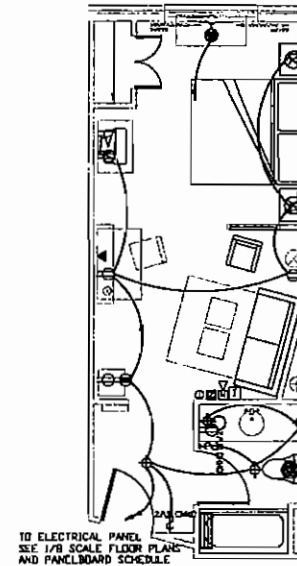


KING SPA

TO ORDER PLANS GO TO Idiline.com



DOUBLE DOUBLE



KING

ELECTRICAL - ROOMS LARGE SCALE FLOOR PLANS

RELEASED FOR CONSTRUCTION
DATE 2/12/07 BY: CW

EPHRAIM HUSAMADEEN
DRAWING AND DESIGN SERVICES
856 MCALLA RD
MACON, GEORGIA 31217
TELEPHONE 478-763-8187
E-MAIL ephraim@idiline.com

PROPOSED 75 ROOM MOTEL FOR
COMFORT SUITES
MACON, GEORGIA
SERUTI CORPORATION, OWNER



Wolf & Associates Architects
MACON, GEORGIA 440 STUBBS EDGE RD, ZIP 31210
PHONE 478-741-8811 FAX 478-474-8380
HIGHLANDS, NORTHEAST CAROLINA 740 BOWSER COVE ROAD, 27141
PHONE 828-524-8995 FAX 828-524-8995

SHEET NO.
E-3

PRK Services

1245 Rutledge Road
Macon, Georgia 31206

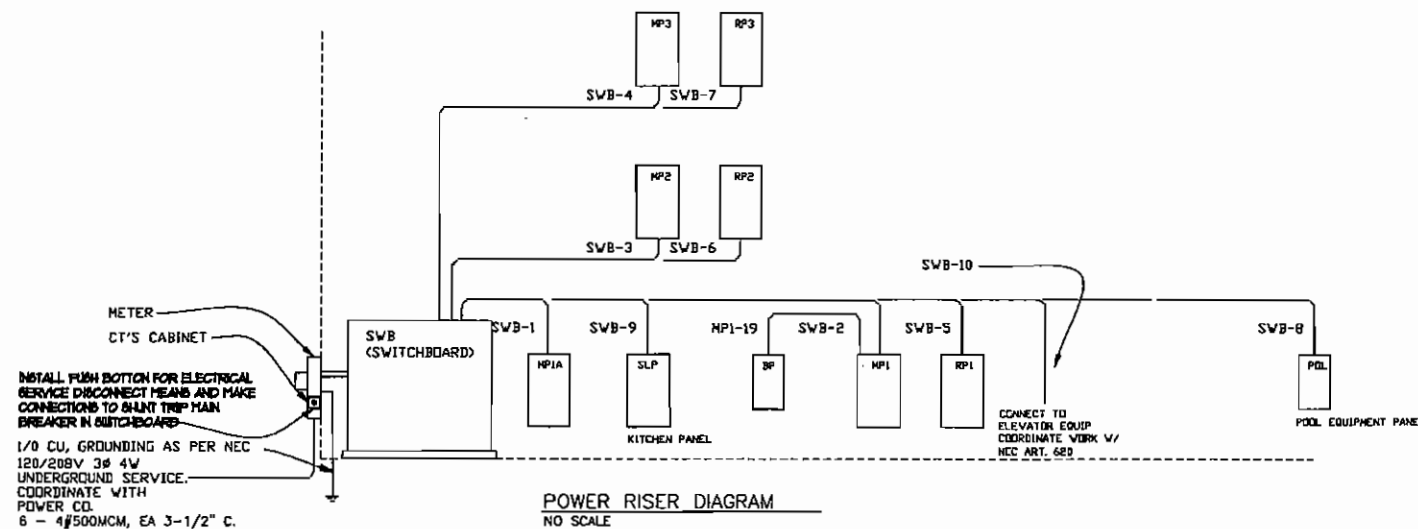
LIGHTING FIXTURE SCHEDULE					
MARK	LAMPS	VOLTAGE	DESCRIPTION	MOUNTING	NOTES
A	4F35	120	2X4 LAY-IN TROFFER - FLUORESCENT	GRID	
B	2F35	120	2X4 LAY-IN TROFFER - FLUORESCENT	GRID	
C	2F35	120	1X4 WRAP-A-ROUND LENSES - FLUORESCENT	SURF	
D	2F35	120	4' STRIP - FLUORESCENT	SURF	
E	150W PAR	120	DOWN LIGHT - INCANDESCENT	RECESSED	
F	2-CF 13W	120	DOWN LIGHT - COMPACT FLUORESCENT	RECESSED	
G	1-100	120	WALL BRACKET - INCANDESCENT	SURF	
H	2FU35	120	2X2 LAY-IN TROFFER - FLUORESCENT	GRID	
I	2F35	120	1X4 GASKET LENSES - FLUORESCENT	SURF	
J	2F35	120	2X4 GASKET LENSES - FLUORESCENT	GRID	
K	-	-	-	-	-
L	1-70 MH	120	DOWN LIGHT - HID	SURFACE	
M	1-70 MH	120	DOWN LIGHT - HID	SUSPENDED	
N	1F35	120	SUPPLIED BY OWNER INSTALLED BY CONTRACTOR		
P	2-CF 13W	120	WALL SCONCE - COMPACT FLUORESCENT	WALL BKT	
Q	1-1000				
R	1-M.				
S	1-175 MH	120	LITHONIA #ASF1175M VFW	CONC PAD ON GRADE	
T	1-250 MH	120	LITHONIA #ASF2250M WF	CONC PAD ON GRADE	
CF		120	CEILING FAN	SURF	
X		120	BATTERY UNIT IN LIGHT FIXTURE	IN FIXT.	UNSWITCH
X1	INC	120	EXT/ 2 HEAD EGRESS - COMBINATION	UNVER.	UNSWITCH
XB	INC	120	EGRESS 2 HEAD BATTERY UNIT	UNVER.	UNSWITCH

PANELBOARD SCHEDULE						
PANEL	CIR. NO	BREAKER TRIP/POLE	LOAD	CONN. K.V.A.	CON-DUCTORS	CON-DUCT
SWB 120/208V 3Ø,3W 2000A MB SHUNT TRIP	1	500A/3P	MP1A	141.7	2-4#250MCM,3" C	
	2	400A/3P	MP1	100.2	1#500MCM,3-1/2"	
	3	300A/3P	MP2	86.8	1#350MCM,3"	
	4	300A/3P	MP3	89.0	1#350MCM,3"	
	5	250A/3P	PANEL RP1	69.1	1#250MCM,2-1/2"	
	6	400A/3P	PANEL RP2	132.8	1#500MCM,3-1/2"	
	7	400A/3P	PANEL RP3	132.8	1#500MCM,3-1/2"	
	8	150A/3P	PANEL PDL - PDDL PANEL	30.0	4#1/0 2"	
	9	100A/3P	PANEL SLP - SERVING LINE	25.0	4#2, 1-1/4"	
	10	110A/3P	ELEVATOR EQUIP (SEE POWER RISER - WORK COMPLY W/ NEC ART.620)	29.0	4#2 1-1/4"	
MP1A 120/208V 3Ø,3W MLO 600A BUS	1-2	45A/3P	AH-1 & AH-2	33.0	4#6 3/4"	
	3	40A/3P	AH-3	14.4	4#8 3/4"	
	4-5	40A/2P	AH-4 & SPARE	8.3	3#8 3/4"	
	6-7	40A/3P	AH-6 & AH-7	28.8	4#8 3/4"	
	8	45A/3P	SPARE	-	-	
	9-14	20A/3P	CU1,3,4,5, AND SPARES	17.4	4#12 1/2"	
	15	40A/3P	CU2	14.4	4#8 3/4"	
	16	110A/3P	MU-1	35.0	4#2 1-1/2"	
COORDINATE ELECTRICAL WITH HVAC EQUIPMENT MANUFACTURER						
RP1 120/208V 3Ø,3W 400A BUS	1-26	20A/1P	GUEST RMS (13) - GRD. FLR	49.4	#12 1/2"	
	27-34	20A/1P	LIGHTING AND C.D.	15.2	#12 1/2"	
	35	30A/2P	DRYER	4.5	3#10 1/2"	
	-	30A/2P	SPARE	-	-	
MP1 120/208V 3Ø,3W 400A BUS	1-14	20A/2P	GUEST RM. A.C. UNIT (14)	117.8	3#12 1/2"	
	15-18	20A/1P	CONV. OUTLETS	7.6	#12 1/2"	
	19	200A/3P	PANEL BP	67.0	4#3/0 2"	
RP2 / RP3 120/208V 3Ø,3W 400A BUS	1-62	20A/1P	GUEST RMS (31) 2ND FLR	117.8	#12 1/2"	
	63-70	20A/1P	LIGHTING & CONV. OUTLETS	10.5	#12 1/2"	
	71	30A/2P	DRYER	4.5	3#10 1/2"	
MP2 / MP3 120/208V 3Ø,3W 400A BUS	1-31	20A/2P	GUEST RM. A.C. UNIT (31)	86.8	#12 1/2"	
	32-34	60A/3P	EF-4,5 (3 COORDINATE WORK)	24.0	4#8 1"	
PDL 120/208V 3Ø,3W 100A BUS 2 SECTION	1-3	20A/1P	LIGHTING	3.6	#12 1/2"	
	4-5	20A/1P	CONV OUTLETS	2.4	#12 1/2"	
	6	45A/3P	DH-1	11.5	4#6 3/4"	
COORDINATE EQUIPMENT WITH POOL EQUIPMENT MANUFACTURER. ALL WORK						
MP1 120/208V 3Ø,3W 225A BUS 2 SECTION	10-27	20A/1P	CONV OUTLETS	25.5	#12 1/2"	
	28-29	30A/2P	DRYER	10.0	3#10 1/2"	
	30-31	30A/2P	WASHER	4.5	3#10 1/2"	
	32	20A/1P	FIRE ALARM PANEL	1.0	#12 1/2"	
	33-38	20A/1P	SITE PARKING LIGHTING	6.0	#10 1/2"	
	39-41	20A/1P	EXTERIOR FLOOD LIGHTING	3.0	#10 1/2"	
	42	20A/1P	COMPUTER OUTLETS	1.0	#12 1/2"	

ELECTRICAL LEGEND	
NEW WORK FLOOR PLANS	
LIGHTING FIXTURES - SEE LIGHTING FIXTURE SCHEDULE	
□	SURFACE MOUNTED FLUORESCENT
○	WALL BRACKET INCANDESCENT
⊕	EXIT WITH EMERGENCY SPOT LIGHTS
⊖	BATTERY EGRESS LIGHT
□	GRID MOUNT FLUORESCENT
CONVENIENCE OUTLETS	
⊕	DUPLEX (WP=WEATHERPROOF) (GFI=GROUND FAULT INTERRUPTING)
⊕	JUNCTION BOX - CEILING, WALL
⊕	DUPLEX 48" AFF
⊕	SPECIAL OUTLET
SWITCH OUTLETS	
S	SPST TOGGLE SWITCH
S3	THREE WAY SWITCH
GENERAL EQUIPMENT	
□	DISCONNECT SWITCH - F = FUSED, N = NON-FUSED
⊕	COMBINATION STARTER/DISCONNECT
⊕	MOTOR - HORSEPOWER INDICATED
FIRE ALARM EQUIPMENT	
⊕	FIRE ALARM HORN/SIGNALING
⊕	FIRE ALARM PULL STATION
⊕	SMOKE DETECTOR (H = HEAT DETECTOR)
COMMUNICATION	
⊕	TELEPHONE OUTLET
⊕	COMPUTER DATA OUTLET
⊕	TV CABLE OUTLET
⊕	SPEAKER CEILING

PANELBOARD SCHEDULE						
PANEL	CIR. NO	BREAKER TRIP/POLE	LOAD	CONN. K.V.A.	CON-DUCTORS	CON-DUCT
SLP 120/208V 3Ø,3W 225A MB	1	20A/1P	SERVING LINE LIGHTING	1.0	#12 1/2"	
	2-8	20A/1P	SERVING LINE C.D.	5.0	#12 1/2"	

TO ORDER PLANS GO TO idiline.com



RELEASED FOR CONSTRUCTION
DATE 3/12/02 BY: *AW*

EPHRAIM HUSAMADEEN
DRAWING AND DESIGN SERVICES
440 STONES EGRESS RD, 2ND FL 31110
MACON, GEORGIA 31217 TELEPHONE 478-745-0100
FAX 478-745-0100



Wolf & Associates Architects
MACON, GEORGIA 31210
PHONE 478-741-8818
FAX 478-741-8880
FIREHILL ANDA, NORTH CAROLINA 760 BOWNE COVE ROAD, 28741
PHONE 828-526-8895
FAX 828-526-8895

SHEET NO.
E4

PROPOSED 75 ROOM MOTEL FOR
COMFORT SUITES
MACON, GEORGIA
SERUTI CORPORATION, OWNER



PRK Services

1248 Railway Road
Macon, Georgia 31206