

To all requirements of the General Conditions of the Contract for Construction, AIA Document 201, August 1976 edition.

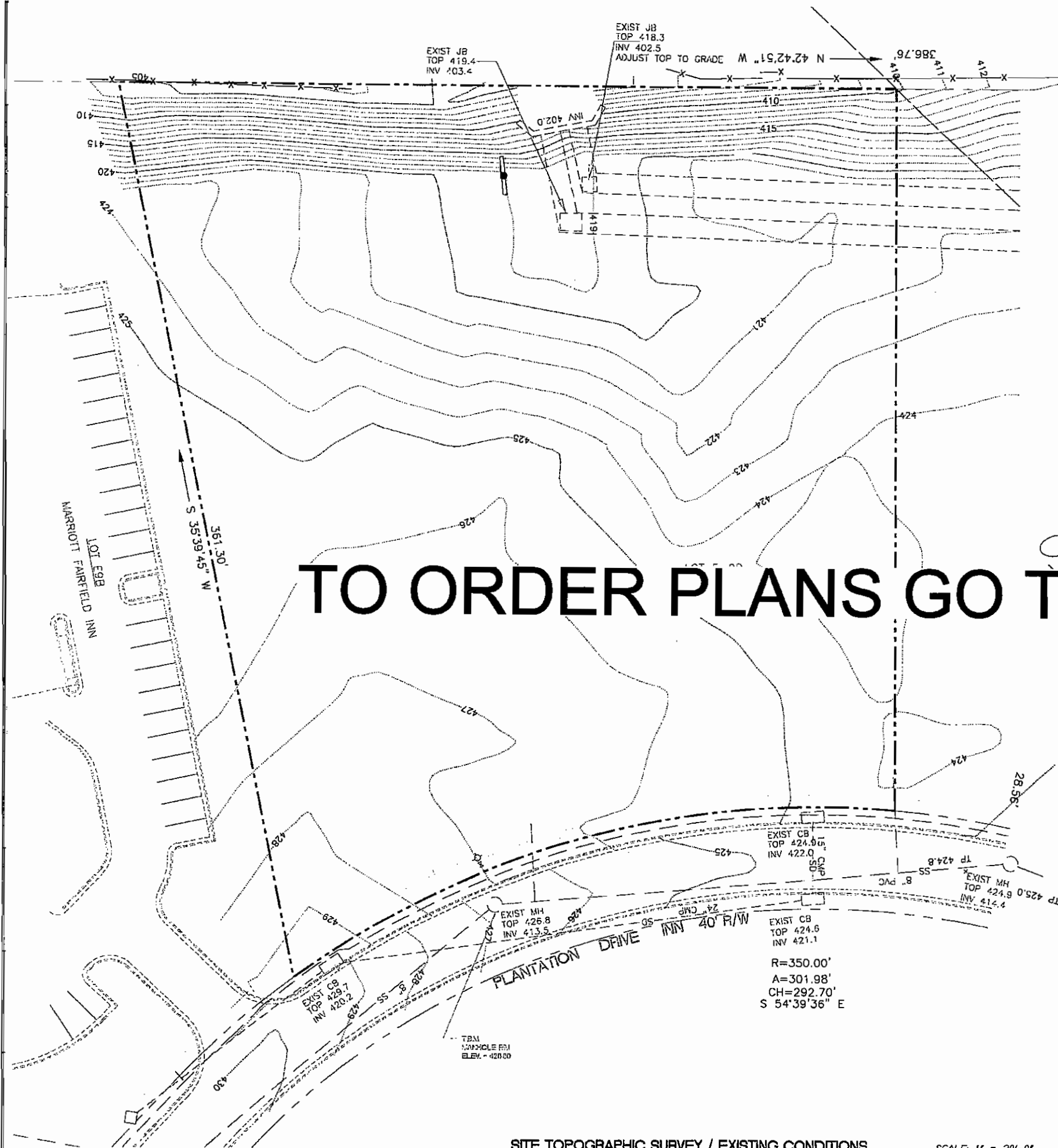


Wolf & Associates Architects
 MACON, GEORGIA - P.O. BOX 28888, ZIP 31221
 PHONE 478-741-8818 FAX 478-474-8880
 HIGHLANDS, NORTH CAROLINA 740 HORSE COVE ROAD, 28741
 PHONE 828-528-8965 FAX 828-528-8965

Shannon Enterprises
 SITE CONSULTANTS / LAND PLANNERS
 600 FERRISBURG TERRACE MACON, GEORGIA 31206 478-476-1760

A NEW HOTEL FACILITY FOR
COMFORT SUITES
 PLANTATION DRIVE / PROJECT # GA624
 LAND LOTS 208 & 209 4th LAND DISTRICT MACON, BEE COUNTY, GEORGIA

DRAWN BY
 DATE 12/08/06
 REV. 1 2/16/07
 REV. 2
 REV. 3
 REV. 4
 SHEET NO.
C-1
 1 of 7



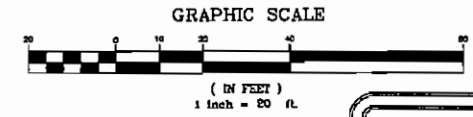
NOTE 8

CIVIL DRAWINGS C-3, C4.1, C4.2 & C4.3
 WERE NOT ISSUED AT THIS TIME AS THEY ARE

TO ORDER PLANS GO TO Idiline.com

LEGEND

PROPERTY LINE	---
IRON PIN FOUND	•
CONC. R/W MONUMENT	□
EXISTING SPOT ELEV.	100
EXISTING CONTOUR	---
PROPOSED SPOT ELEV.	350.00
PROPOSED CONTOUR	---
UTILITY POLE/GUY WIRE	—+—
OVERHEAD POWER	—O—
UNDERGROUND TELEPHONE	---T---
WATER LINE	---W---
SANITARY SEWER	---SS---
SIGN	□
MALIBOX	□
FENCE	—+—
TREE	⊗



EXIST CB
 TOP 424.6
 INV 421.1
 R=350.00'
 A=301.98'
 CH=292.70'
 S 54°39'36" E

REVISIONS / ADDITIONS

REV. # 1	
REV. # 2	
REV. # 3	
REV. # 4	
REV. # 5	
REV. # 6	
REV. # 7	
REV. # 8	



to all requirements of the General Conditions of the Contract for Construction, AIA Document 201, August 1976 edition.

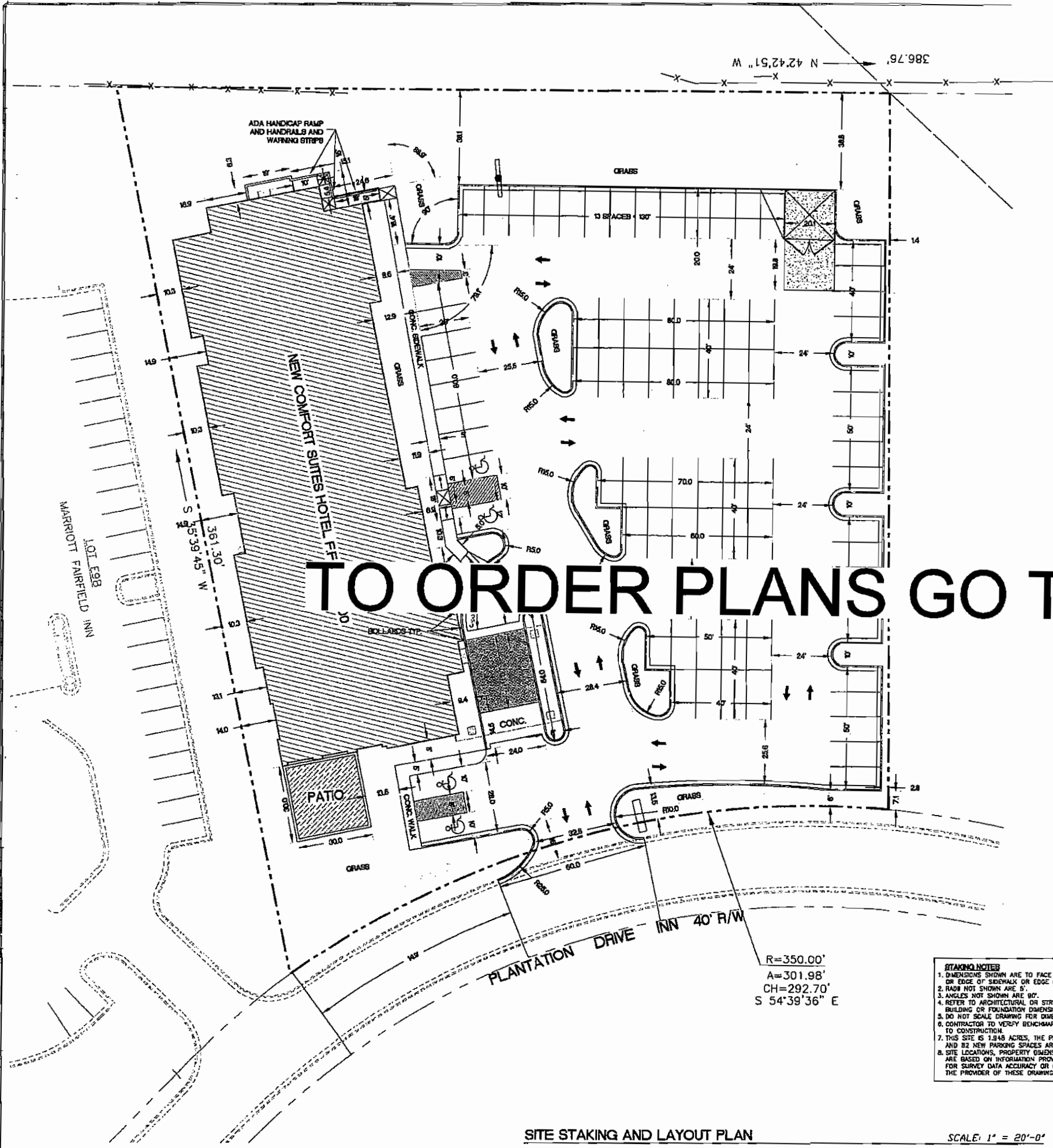


Wolf & Associates Architects
 MACON, GEORGIA - P.O. BOX 28988, ZIP 31221
 PHONE 478-741-8818 FAX 478-474-8580
 HIGHLANDS, NORTH CAROLINA, 740 HORSE CREEK ROAD, 28741
 PHONE 828-528-8985 FAX 828-528-8085

Shannon Enterprises
 SITE CONSULTANTS / LAND PLANNERS
 800 PENNSYLVANIA TERRACE, MACON, GEORGIA 31203 478-478-1780

A NEW HOTEL FACILITY FOR
COMFORT SUITES
 PLANTATION DRIVE / PROJECT # GA624
 LANDLOTS 209.7.255, 4th LAND DISTRICT, MACON, BIBB COUNTY, GEORGIA

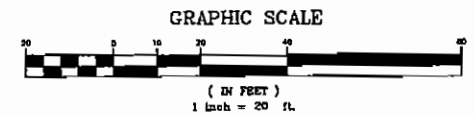
DATE: 7/30/06
 REV. 1: 8/16/07
 REV. 2:
 REV. 3:
 REV. 4:
 SHEET NO. C-2
 OF 7



TO ORDER PLANS GO TO Idiline.com

R=350.00'
 A=301.98'
 CH=292.70'
 S 54°39'36" E

- STAKING NOTES**
1. DIMENSIONS SHOWN ARE TO FACE OF CURB, OUTSIDE FACE OF BUILDING, OR EDGE OF SIDEWALK OR EDGE OF PAVEMENT
 2. RADII NOT SHOWN ARE 5'.
 3. ANGLES NOT SHOWN ARE 90°.
 4. REFER TO ARCHITECTURAL OR STRUCTURAL DRAWINGS FOR EXACT BUILDING OR FOUNDATION DIMENSIONS.
 5. DO NOT SCALE DRAWING FOR DIMENSIONS.
 6. CONTRACTOR TO VERIFY BENCHMARKS & PROPERTY LINES PRIOR TO CONSTRUCTION.
 7. THIS SITE IS 1.848 ACRES, THE PROPOSED NEW BUILDING AREA IS 16,350 SQ. FT. AND 82 NEW PARKING SPACES ARE PROVIDED.
 8. SITE LOCATIONS, PROPERTY DIMENSIONS, AND ALL EXISTING STRUCTURES ARE BASED ON INFORMATION PROVIDED BY SURVEYOR, NO RESPONSIBILITY FOR SURVEY DATA ACCURACY OR COMPLETENESS WILL BE TAKEN BY THE PROVIDER OF THESE DRAWINGS.



SITE STAKING AND LAYOUT PLAN

SCALE: 1" = 20'-0"

to all requirements of the General Conditions of the Contract for Construction, AIA Document 201, August 1978 edition.



Wolf & Associates Architects
 MACON, GEORGIA - P.O. BOX 28998, ZIP 31221
 PHONE 478-741-8818 FAX 478-474-8580
 HIGHLANDS, NORTH CAROLINA 740 HORSE COVE ROAD, 28741
 PHONE 828-528-8985 FAX 828-528-8985

Shannon Enterprises
 SITE CONSULTANTS / LAND PLANNERS
 800 PENNCLIFF TERRACE MACON, GEORGIA 31208 478-478-1780

COMFORT SUITES
 PLANTATION DRIVE / PROJECT # GA624
 LAND LOTS 208, 209, 210, 4th LAND DISTRICT, MACON, BEECH COUNTY, GEORGIA

BASIS OF DESIGN

FIRE PROTECTION
 HOTEL HAS A FIRE SPRINKLER SYSTEM

PERSONNEL
 15 FULL TIME EMPLOYEES
 6 TRANSIENT PERSONNEL MAX

FACILITIES

HOTEL FACILITY
 75 ROOM TOILETS
 75 ROOM LAVATORIES
 75 ROOM SINKS
 75 ROOM BATHTUBS WITH SHOWNERS
 7 CLOTHES WASHERS
 EMPLOYEE RESTROOMS
 8 TOILET
 8 LAVATORIES

NO RESTAURANTS NO FOOD PREP
 NO ROOMS W/ KITCHENS
 7 JACUZZIS

WATER USE AND WASTEWATER FLOW
 15 EMPLOYEES @ 25 CPD = 250 CPD
 6 TRANSIENTS @ 50 CPD = 300 CPD
 184 GUEST AT 25 CPD = 5,250 CPD OVER 8 HOUR PERIOD
 TOTAL FLOW = 5,800 CPD OVER 8 HOUR PERIOD
 EQUIVALENT ADF = 4,550 X 24/8 = 17,000 CPD
 AT PEAK = 3.0
 EQUIVALENT PEAK DAILY FLOW = 52,200 CPD = 36 GPM

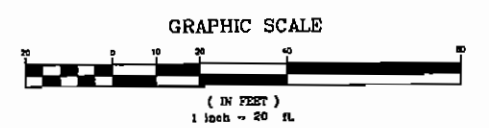
SPECIFICATIONS

1. ALL WATER AND WASTEWATER UTILITIES SHALL BE INSTALLED AND TESTED, AND ALL LABOR AND MATERIALS SUPPLIED, IN ACCORDANCE WITH THE REQUIREMENTS OF THE MACON WATER AUTHORITY AS SET FORTH IN ITS PUBLICATION TITLED "STANDARDS FOR DESIGN AND CONSTRUCTION SPECIFICATIONS", REVISED MAY 2004, OR LATEST. A COPY OF THIS PUBLICATION CAN BE OBTAINED DIRECTLY FROM THE MACON WATER AUTHORITY, 718 SECOND STREET, MACON, GEORGIA 31202, PHONE (478) 464-5620. THESE SPECIFICATIONS ARE A PART OF THIS PROJECT BY REFERENCE AS IF SPECIFICALLY WRITTEN HEREIN AND SHALL BE EXPLICITLY FOLLOWED.
2. UTILITY CONTRACTOR SHALL PROVIDE ONE COPY OF "AS-BUILT" DRAWINGS FOR OWNER RECORDS AND TWO COPIES OF "AS-BUILT" DRAWINGS FOR SUBMITTAL TO THE MACON WATER AUTHORITY UPON COMPLETION OF WORK.

- CONSTRUCTION NOTES:**
1. ALL UTILITIES SHALL BE CONSTRUCTED IN ACCORDANCE WITH THE MWA SPECS AND SHALL COMPLY WITH ALL LOCAL PLUMBING CODES AND REGULATIONS.
 2. UTILITY INFORMATION SHOWN WITHIN THESE PLANS WAS OBTAINED FROM THE BEST AVAILABLE SOURCE AND MAY NOT BE EITHER ACCURATE OR COMPLETE. THE GENERAL RESPONSIBLE FOR VERIFYING EXACT LOCATIONS OF EITHER PRIVATE OR EXISTING OR NOT SHOWN HEREON.
 3. EXISTING WATER LINE WILL BE BY THE MWA AND WILL BE PAID FOR BY THE OWNER.
 4. SHALL FURNISH AND MAINTAIN ALL NECESSARY BARRICADES AROUND SMALL PROVIDE PROTECTION AGAINST WATER DAMAGE AND EROSION.
 5. ALL ELEVATIONS ARE IN REFERENCE TO THE BENCHMARK AND MUST BE VERIFIED BY THE GENERAL CONTRACTOR PRIOR TO GROUND BREAKING.
 6. A MINIMUM VERTICAL SEPARATION OF 18" AND MINIMUM HORIZONTAL SEPARATION OF 10" MUST BE MAINTAINED BETWEEN WATER MAINS AND SANITARY SEWERS LINES.
 7. ALL SANITARY MANHOLE RIMS TO BE SET FLUSH WITH GRADE UNLESS NOTED OTHERWISE.
 8. SANITARY SEWER SERVICE LATERALS SHALL BE EXTENDED A MINIMUM OF 5' BEYOND THE RIGHT-OF-WAY LINE AND MARKED WITH A 2 X 4 AND PAINTED ON THE EDGE OF PAVING. THE CONTRACTOR SHALL NOTIFY THE CITY PRIOR TO CONSTRUCTION.
 9. PIPE LENGTHS SHOWN ARE FROM CENTER TO CENTER OF M.H.'S, AND ALL LENGTHS ARE APPROXIMATE.
 10. ALL PROPOSED SANITARY SEWER LINES SHALL BE LAID WITH MWA STANDARDS, LATEST REVISIONS THEREOF, AND SHALL COMPLY WITH ALL LOCAL PLUMBING CODES.
 11. ALL DITCHES AND SLOPES TO BE STABILIZED DURING AND AFTER CONSTRUCTION.
 12. GRASSING AS PER CITY STANDARDS.
 13. IF WATER SERVICE LINES PROJECT OR ARE LAID UNDER ANY PAVED SERVICE WHERE THERE IS VEHICULAR TRAFFIC, SCHEDULE 80 DR 6" OR COPPER SERVICE PIPE IS RECOMMENDED IN THESE AREAS.

LEGEND

PROPERTY LINE	---
IRON PIN FOUND	•
CONC. R/W MONUMENT	■
EXISTING SPOT ELEV.	21'-1"
EXISTING CONTOUR	---
PROPOSED SPOT ELEV.	350.00
PROPOSED CONTOUR	---
UTILITY POLE/GUY WIRE	---
OVERHEAD POWER	OH-P
UNDERGROUND TELEPHONE	UGT
WATER LINE	W
SANITARY SEWER	SS
SIGN	□
MAILBOX	?
FENCE	---
TREE	○



Dig Safely
 1-800-282-7411
 Call Before You Dig

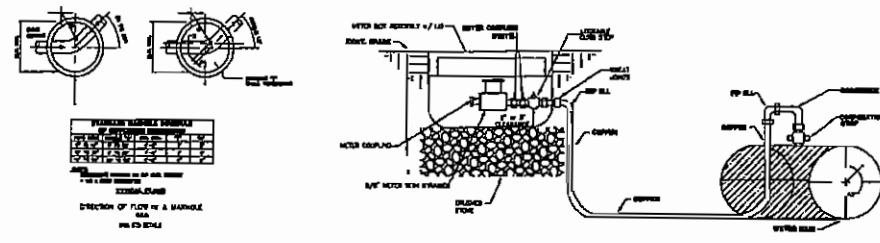


DATE BY
 DATE
 11/30/06
 REV. 1 12/16/07
 REV. 2
 REV. 3
 REV. 4
 SHEET NO.
C-6.1
 L1 OF 7

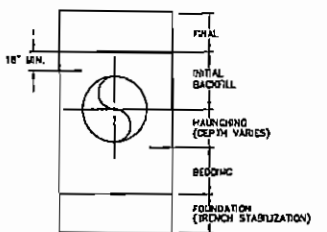


TO ORDER PLANS GO TO idiline.com

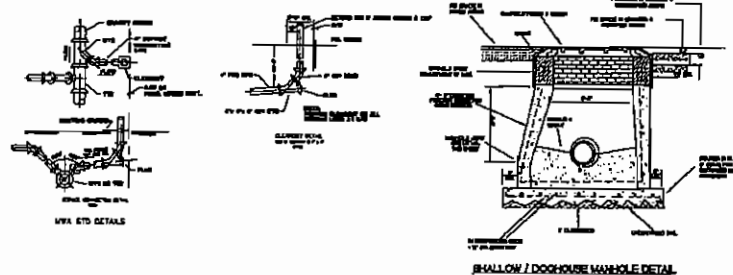
SITE UTILITY PLAN SCALE: 1" = 20'-0"



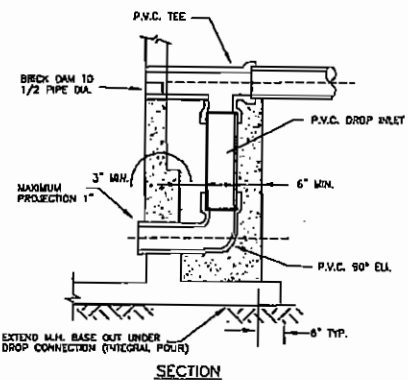
WATER SERVICE & METER CONNECTION DETAILS
N.T.S. SIZES 8" & 1" FT



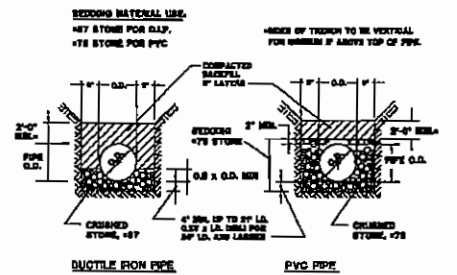
TRENCH TERMINOLOGY DETAIL
N.T.S.



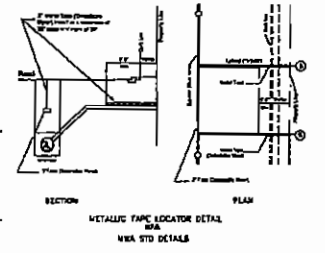
SHALLOW DOORHOUSE MANHOLE DETAIL



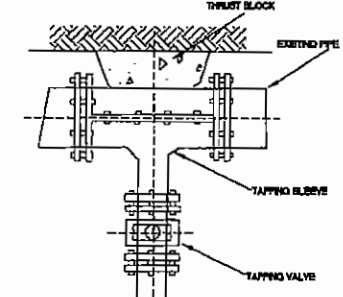
STANDARD DROP CONNECTION
N.T.S.



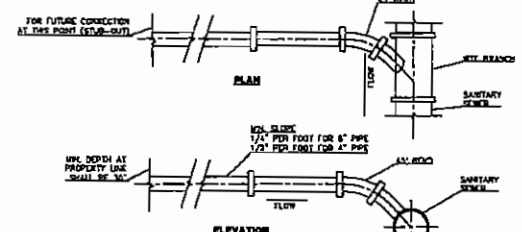
PIPE BEDDING AND HAUNCHING DETAIL
N.T.S.



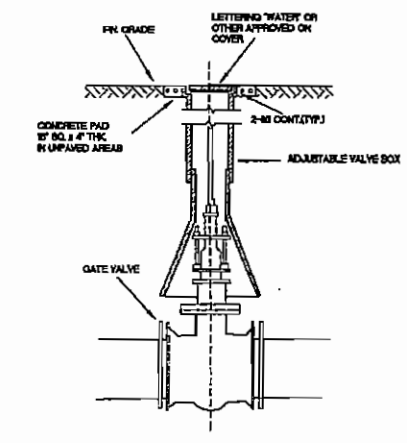
METALLIC PIPE LOCATOR DETAIL
N.T.S.



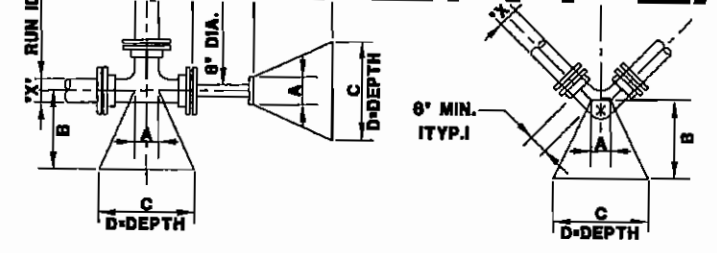
TYPICAL TAPPING VALVE AND SLEEVE



CLEANOUT DETAIL
N.T.S.



TYPICAL GATE VALVE + VALVE BOX DETAIL
N.T.S.

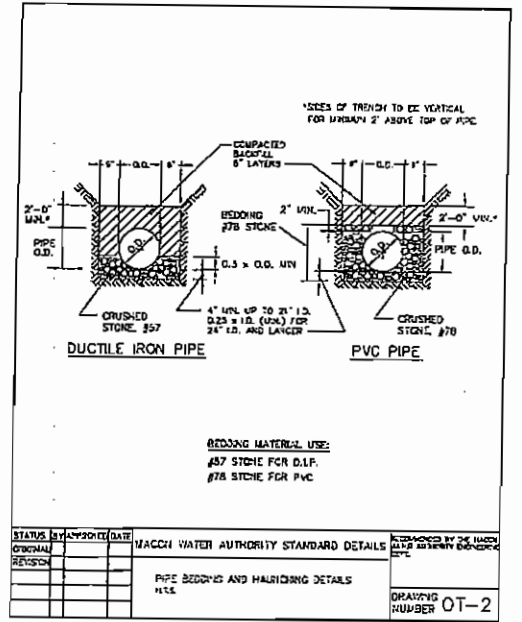


PVC WRAP (4MM THICKNESS)

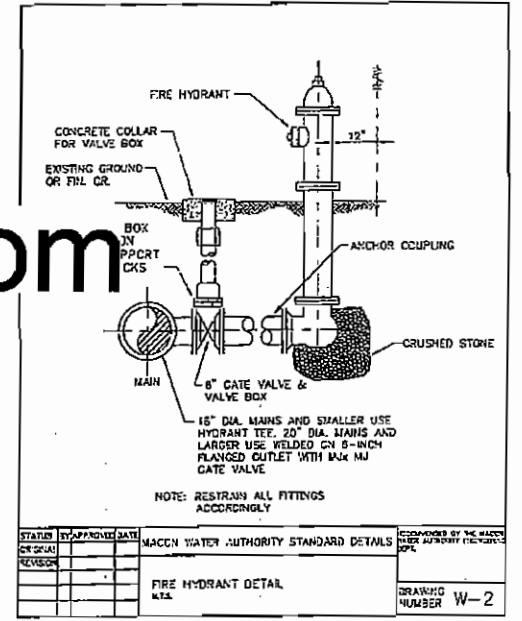
CONCRETE (4000 PSI)

- NOTES:**
- 'A', 'B', 'C' & 'D' WILL BE DETERMINED BY THE ENGINEER.
 - MEGALUG RESTRAINTS SHALL BE USED ON ALL BENDS.

TYPICAL BLOCKING DETAIL



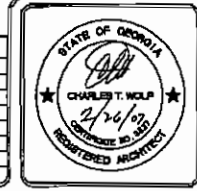
PIPE BEDDING AND HAUNCHING DETAILS
N.T.S.



FIRE HYDRANT DETAIL
N.T.S.

TO ORDER PLANS GO TO Idiline.com

REVISIONS / ADDITIONS	
REV. # 1	
REV. # 2	
REV. # 3	
REV. # 4	
REV. # 5	
REV. # 6	
REV. # 7	
REV. # 8	



Wolf & Associates Architects
MACON, GEORGIA - P.O. BOX 28988, ZIP 31221
PHONE 478-741-8818 FAX 478-474-8580
HIGHLANDS, NORTH CAROLINA 740 HORSE COVE ROAD, 28741
PHONE 828-828-8865 FAX 828-828-8995

Shannon Enterprises
SITE Consultants / Land Planners
800 PERIMETER TERRACE MACON, GEORGIA 31206 478-876-1760

A NEW HOTEL FACILITY FOR
COMFORT SUITES
PLANTATION DRIVE / PROJECT # GA624
LANOKTIB 209.7.236.418, LAND DISTRICT, MACON, BIBB COUNTY, GEORGIA

DATE BY
DATE
11/30/08
REV. 1 7/26/07
REV. 2
REV. 3
REV. 4
SHEET NO.
C-6.2
62 OF 7

to all requirements of the General Conditions of the Contract for Construction, AIA Document 201, August 1976 edition.



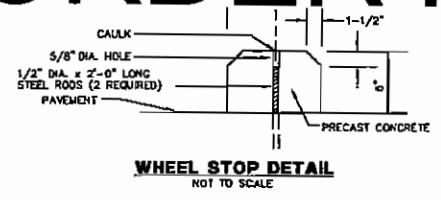
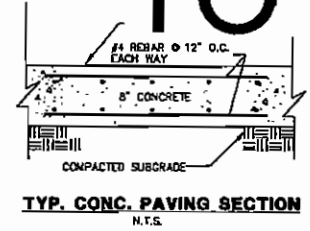
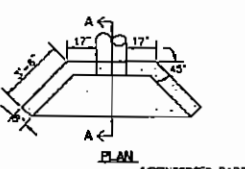
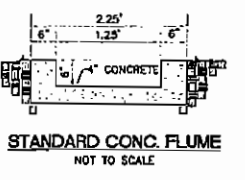
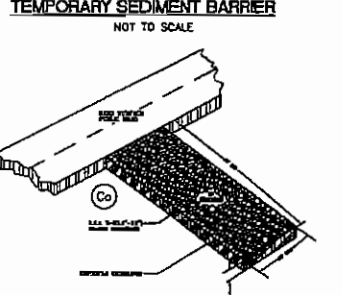
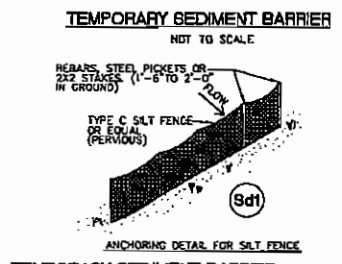
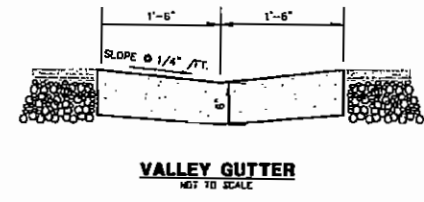
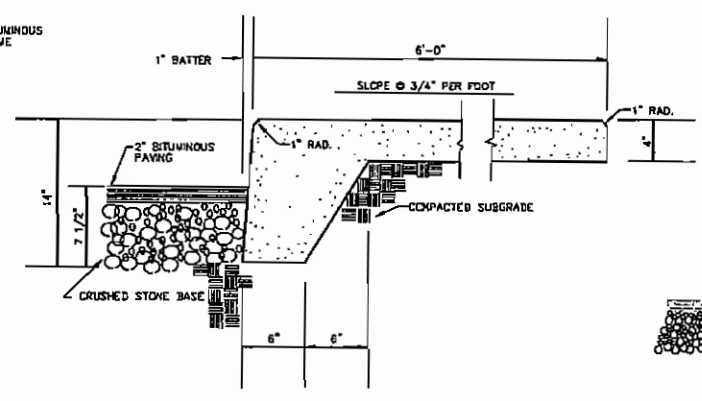
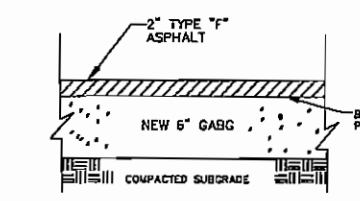
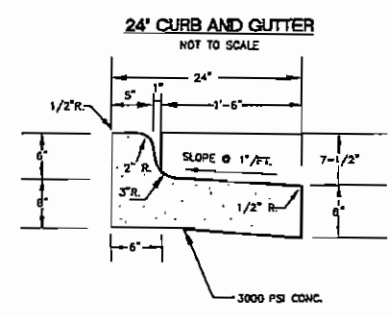
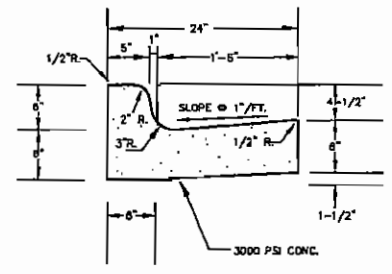
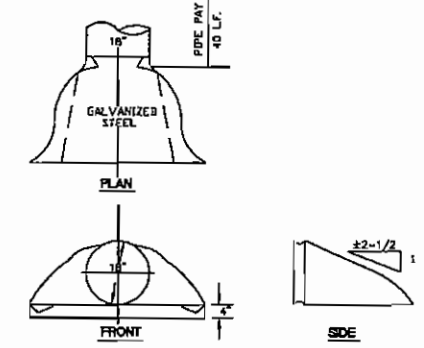
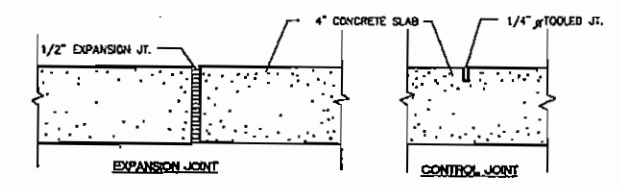
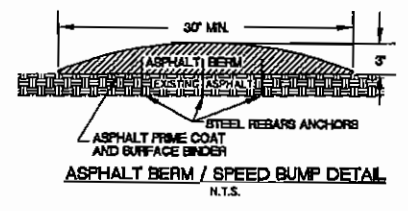
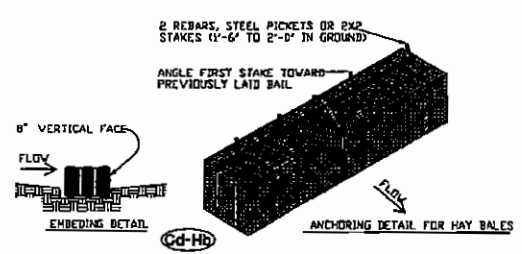
Wolf & Associates Architects
 MACON, GEORGIA - P.O. BOX 28998, ZIP 31221
 PHONE 478-741-8818 FAX 478-474-8580
 HIGHLANDS, NORTH CAROLINA 740 HORSE COVE ROAD, 28741
 PHONE 828-528-8998 FAX 828-528-8905

Shannon Enterprises
 SITE CONSULTANTS / LAND PLANNERS
 800 PEARLHURST TERRACE MACON, GEORGIA 31208 478-478-0780

A NEW HOTEL FACILITY FOR
COMFORT SUITES
 PLANTATION DRIVE / PROJECT # GA624
 LANDLOTS 207, 208, 4th LAND DISTRICT, MACON, BREVARD COUNTY, GEORGIA

DESIGNED BY
 FTS
 DATE
 08/22/06

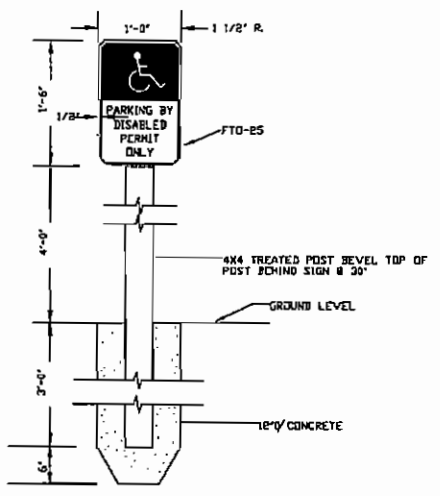
REV. 1 1/2/07
 REV. 2
 REV. 3
 REV. 4
 SHEET NO.
C-7
 7 OF 7



TO ORDER PLANS GO TO Idiline.com

SOUTHERN PIEDMONT VEGETATIVE COVERS				
MONTH	TEMPORARY SEED	RATE/ACRE	PERMANENT SEED	RATE/ACRE
JANUARY	RYE GRASS	40-50 LB.	UNHULLED BERMUDEA	15 LB.
FEBRUARY	RYE GRASS	40-50 LB.	UNHULLED BERMUDEA	15 LB.
MARCH	ANNUAL LESPEDEZA WEEPING LOVE GRASS	40 LB. 4-8 LB.	HULLED BERMUDEA	10 LB. 30-40 LB.
APRIL	BROWN TOP MILLET ANNUAL LESPEDEZA SUDAN GRASS	30-40 LB. 40 LB. 80 LB.	WEEPING LOVE GRASS HULLED BERMUDEA BAHIA	30-40 LB. 40 LB. 60 LB.
MAY	WEEPING LOVE GRASS SUDAN GRASS BROWN TOP MILLET	4-8 LB. 60 LB. 30-40 LB.	WEEPING LOVE GRASS HULLED BERMUDEA BAHIA	4-8 LB. 10 LB. 40-60 LB.
JUNE	WEEPING LOVE GRASS SUDAN GRASS BROWN TOP MILLET	4-8 LB. 60 LB. 30-40 LB.	WEEPING LOVE GRASS HULLED BERMUDEA	4-8 LB. 10 LB. 40-60 LB.
JULY	SUDAN GRASS BROWN TOP MILLET	80 LB. 30-40 LB.		
AUGUST	RYE GRASS	40-50 LB.		
SEPTEMBER	WHEAT	2-3 LB.	SERPOEA LESPEDEZA (UNSCARIFIED)	50-75 LB.
OCTOBER	WHEAT	2-3 LB.	UNHULLED BERMUDEA SERPOEA LESPEDEZA	15 LB. 30-40 LB.
NOVEMBER	WHEAT	2-3 LB.	UNHULLED BERMUDEA SERPOEA LESPEDEZA	15 LB. 30-40 LB.
DECEMBER	RYE GRASS WHEAT	2-3 LB. 2-3 LB.	UNHULLED BERMUDEA SERPOEA LESPEDEZA	8-10 LB. 30-40 LB.

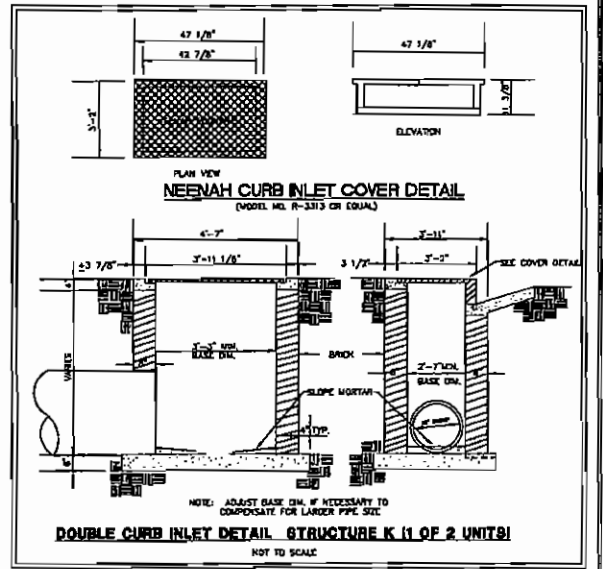
¹ USE A MINIMUM OF 40 LBS. SCARIFIED SEED. REMAINDER MAY BE CLEAN HULLED SEED.
² USE EITHER COMMON SERALA, OR INTERSTATE SERPOEA LESPEDEZA



HANDICAP PARKING SIGN
 NOT TO SCALE
 NOTES:
 1. ALL LETTERS ARE 1" SERIES "C".
 2. TOP PORTION OF SIGN SHALL HAVE A REFLECTORIZED BLUE BACKGROUND WITH WHITE REFLECTORIZED LEGEND & BORDER.
 3. BOTTOM PORTION OF SIGN SHALL HAVE A REFLECTORIZED WHITE BACKGROUND WITH BLACK OPAQUE LEGEND & BORDER.

SITE AND CIVIL DETAILS

SCALE: AS SHOWN



To all requirements of the General Conditions of the Contract for Construction, AIA Document 201, August 1976 edition.

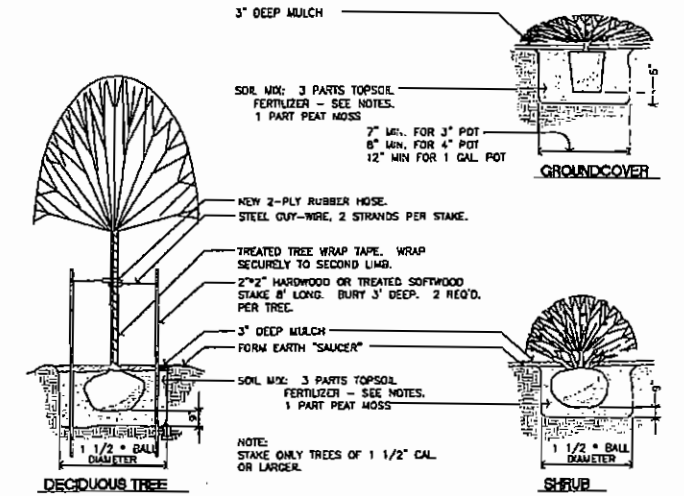
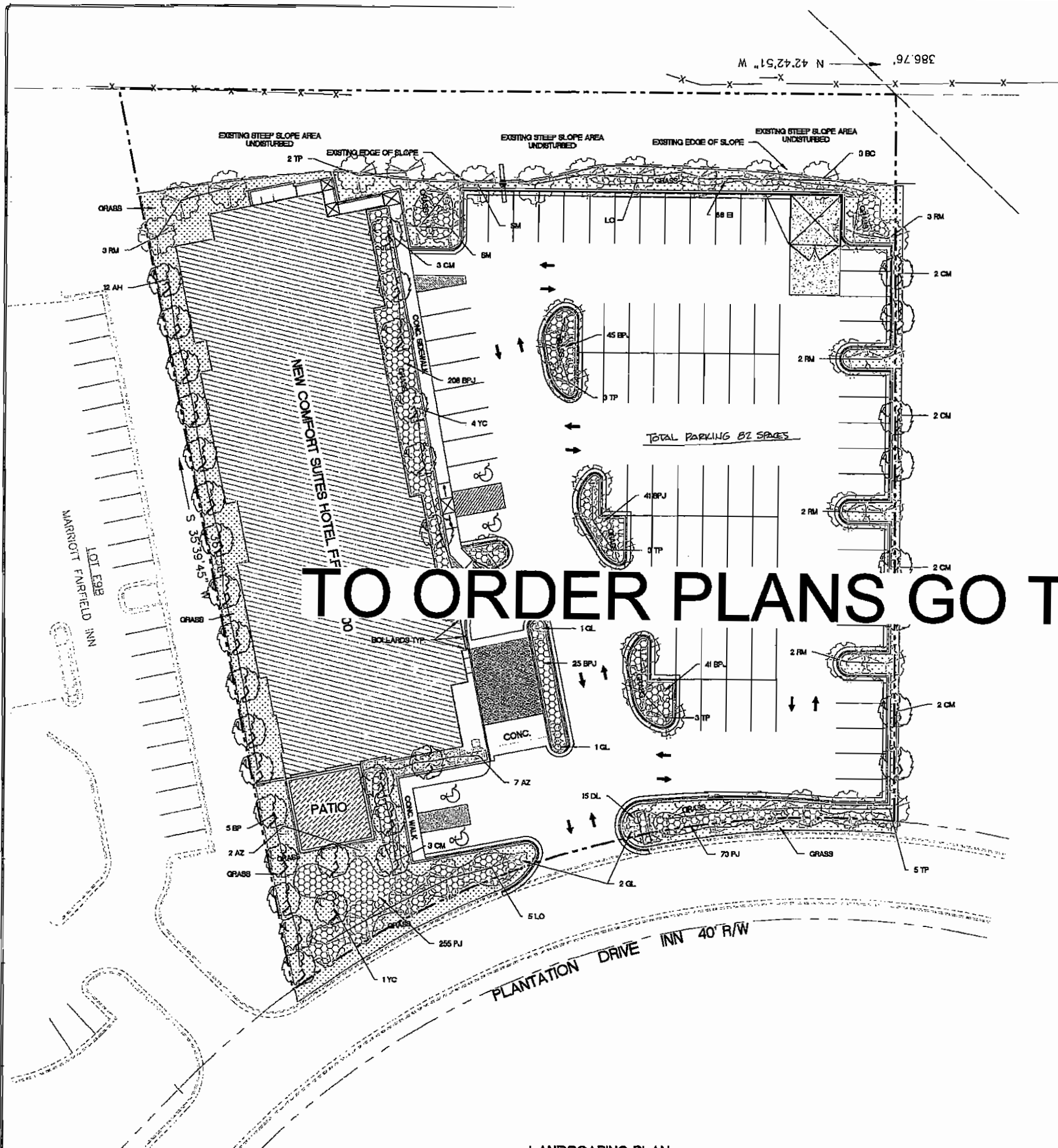


Wolf & Associates Architects
 MACON, GEORGIA - P.O. BOX 26998 ZIP 31221
 PHONE 478-741-8818 FAX 478-474-8580
 HIGHLANDS, NORTH CAROLINA 710 HORSE COVE ROAD, 28741
 PHONE 828-568-8955 FAX 828-568-8955

Shannon Enterprises
 SITE CONSULTANTS / Land Planners
 500 PENNINGTON TERRACE MACON, GEORGIA 31203 478-478-9780

A NEW HOTEL FACILITY FOR
COMFORT SUITES
 PLANTATION DRIVE / PROJECT # GA624
 LAND LOTS 208, 209, 210, 211, 212, 213, 214, 215, 216, 217, 218, 219, 220, 221, 222, 223, 224, 225, 226, 227, 228, 229, 230, 231, 232, 233, 234, 235, 236, 237, 238, 239, 240, 241, 242, 243, 244, 245, 246, 247, 248, 249, 250, 251, 252, 253, 254, 255, 256, 257, 258, 259, 260, 261, 262, 263, 264, 265, 266, 267, 268, 269, 270, 271, 272, 273, 274, 275, 276, 277, 278, 279, 280, 281, 282, 283, 284, 285, 286, 287, 288, 289, 290, 291, 292, 293, 294, 295, 296, 297, 298, 299, 300, 301, 302, 303, 304, 305, 306, 307, 308, 309, 310, 311, 312, 313, 314, 315, 316, 317, 318, 319, 320, 321, 322, 323, 324, 325, 326, 327, 328, 329, 330, 331, 332, 333, 334, 335, 336, 337, 338, 339, 340, 341, 342, 343, 344, 345, 346, 347, 348, 349, 350, 351, 352, 353, 354, 355, 356, 357, 358, 359, 360, 361, 362, 363, 364, 365, 366, 367, 368, 369, 370, 371, 372, 373, 374, 375, 376, 377, 378, 379, 380, 381, 382, 383, 384, 385, 386, 387, 388, 389, 390, 391, 392, 393, 394, 395, 396, 397, 398, 399, 400, 401, 402, 403, 404, 405, 406, 407, 408, 409, 410, 411, 412, 413, 414, 415, 416, 417, 418, 419, 420, 421, 422, 423, 424, 425, 426, 427, 428, 429, 430, 431, 432, 433, 434, 435, 436, 437, 438, 439, 440, 441, 442, 443, 444, 445, 446, 447, 448, 449, 450, 451, 452, 453, 454, 455, 456, 457, 458, 459, 460, 461, 462, 463, 464, 465, 466, 467, 468, 469, 470, 471, 472, 473, 474, 475, 476, 477, 478, 479, 480, 481, 482, 483, 484, 485, 486, 487, 488, 489, 490, 491, 492, 493, 494, 495, 496, 497, 498, 499, 500, 501, 502, 503, 504, 505, 506, 507, 508, 509, 510, 511, 512, 513, 514, 515, 516, 517, 518, 519, 520, 521, 522, 523, 524, 525, 526, 527, 528, 529, 530, 531, 532, 533, 534, 535, 536, 537, 538, 539, 540, 541, 542, 543, 544, 545, 546, 547, 548, 549, 550, 551, 552, 553, 554, 555, 556, 557, 558, 559, 560, 561, 562, 563, 564, 565, 566, 567, 568, 569, 570, 571, 572, 573, 574, 575, 576, 577, 578, 579, 580, 581, 582, 583, 584, 585, 586, 587, 588, 589, 590, 591, 592, 593, 594, 595, 596, 597, 598, 599, 600, 601, 602, 603, 604, 605, 606, 607, 608, 609, 610, 611, 612, 613, 614, 615, 616, 617, 618, 619, 620, 621, 622, 623, 624, 625, 626, 627, 628, 629, 630, 631, 632, 633, 634, 635, 636, 637, 638, 639, 640, 641, 642, 643, 644, 645, 646, 647, 648, 649, 650, 651, 652, 653, 654, 655, 656, 657, 658, 659, 660, 661, 662, 663, 664, 665, 666, 667, 668, 669, 670, 671, 672, 673, 674, 675, 676, 677, 678, 679, 680, 681, 682, 683, 684, 685, 686, 687, 688, 689, 690, 691, 692, 693, 694, 695, 696, 697, 698, 699, 700, 701, 702, 703, 704, 705, 706, 707, 708, 709, 710, 711, 712, 713, 714, 715, 716, 717, 718, 719, 720, 721, 722, 723, 724, 725, 726, 727, 728, 729, 730, 731, 732, 733, 734, 735, 736, 737, 738, 739, 740, 741, 742, 743, 744, 745, 746, 747, 748, 749, 750, 751, 752, 753, 754, 755, 756, 757, 758, 759, 760, 761, 762, 763, 764, 765, 766, 767, 768, 769, 770, 771, 772, 773, 774, 775, 776, 777, 778, 779, 780, 781, 782, 783, 784, 785, 786, 787, 788, 789, 790, 791, 792, 793, 794, 795, 796, 797, 798, 799, 800, 801, 802, 803, 804, 805, 806, 807, 808, 809, 810, 811, 812, 813, 814, 815, 816, 817, 818, 819, 820, 821, 822, 823, 824, 825, 826, 827, 828, 829, 830, 831, 832, 833, 834, 835, 836, 837, 838, 839, 840, 841, 842, 843, 844, 845, 846, 847, 848, 849, 850, 851, 852, 853, 854, 855, 856, 857, 858, 859, 860, 861, 862, 863, 864, 865, 866, 867, 868, 869, 870, 871, 872, 873, 874, 875, 876, 877, 878, 879, 880, 881, 882, 883, 884, 885, 886, 887, 888, 889, 890, 891, 892, 893, 894, 895, 896, 897, 898, 899, 900, 901, 902, 903, 904, 905, 906, 907, 908, 909, 910, 911, 912, 913, 914, 915, 916, 917, 918, 919, 920, 921, 922, 923, 924, 925, 926, 927, 928, 929, 930, 931, 932, 933, 934, 935, 936, 937, 938, 939, 940, 941, 942, 943, 944, 945, 946, 947, 948, 949, 950, 951, 952, 953, 954, 955, 956, 957, 958, 959, 960, 961, 962, 963, 964, 965, 966, 967, 968, 969, 970, 971, 972, 973, 974, 975, 976, 977, 978, 979, 980, 981, 982, 983, 984, 985, 986, 987, 988, 989, 990, 991, 992, 993, 994, 995, 996, 997, 998, 999, 1000

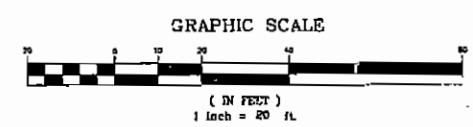
DATE: 1/30/07
 SHEET NO. C-8



- PLANTING NOTES:**
- INSTALL ALL PLANT MATERIAL, SOD, MULCH, ECT., AS SHOWN ON THE DRAWINGS. WORK SHALL INCLUDE ALL LABOR AND MATERIALS NECESSARY FOR A COMPLETE LANDSCAPE INSTALLATION.
 - CONTRACTOR IS RESPONSIBLE FOR LOCATING ALL UTILITIES, SUBSURFACE DRAINAGE, AND UNDERGROUND CONSTRUCTION SO THAT PROPER PRECAUTIONS MAY BE TAKEN NOT TO DISTURB OR DAMAGE ANY SUBSURFACE IMPROVEMENTS. CONTRACTOR IS RESPONSIBLE FOR MAKING, AT HIS OWN EXPENSE, ALL REPAIRS TO DAMAGED UTILITIES RESULTING FROM THE WORK COVERED BY THIS CONTRACT.
 - ALL PLANT MATERIAL SHALL CONFORM TO AMERICAN STANDARD FOR NURSERY STOCK, AMERICAN ASSOCIATION OF NURSEYMEN, INC., AND APPROVED BY AMERICAN NATIONAL STANDARDS INSTITUTE, INC.
 - IRRIGATION SYSTEM THAT WILL HAVE COMPLETE 4" WILL BE TO ACCEPTED IRRIGATION TY, AND CITY REGULATIONS. DESIGN RATE WATER METER, IRRIGATION SPECIFICATIONS FOR ARCHITECT'S TRACTOR TO PROVIDE AS-BUILT DRAWINGS AND ALL OPERATIONAL DATA REQUIRED FOR PRESENTATION TO OWNER. IRRIGATION CONTRACTOR TO PROVIDE ONE YEAR REPLACEMENT GUARANTEE ON TOTAL SYSTEM.
 - ANY ADDITIONAL TOPSOIL NECESSARY FOR PLANTING OF LAWNS, SHRUBS, ECT. IN EXCESS OF ANY STOCKPILED TOPSOIL SHALL BE NATURAL FERTILE AND FREE OF ANY DEBRIS.
 - PLANTING SOIL SHALL CONSIST OF ONE PART PEAT, ONE PART SAND, AND ONE PART TOPSOIL BY BOLVME TO WHICH SHALL BE ADDED 10 LBS. (10-10-10) COMMERCIAL FERTILIZER PER CUBIC YARD.

TO ORDER PLANS GO TO idiline.com

SYM	NO	PLANTING SCHEDULE		INSTALLATION NOTES	SIZE
		BOTANICAL	COMMON		
AI	12	ALEX SPACIA	AMERICAN HOLLY	AS SHOWN	2' CALIPER / 8-10' HIGH
AZ	10	RHODODENDRON INDICUM	AZALEA	AS SHOWN	1' CALIPER / 30" HIGH
BC	3	TAXODIUM DISTICHUM	BALD CYPRESS	AS SHOWN	2' CALIPER / 8-10' HIGH
BPJ	5	PYRUS CALLERYANA	BRADFORD PEAR	AS SHOWN	2' CALIPER / 8-10' HIGH
BPJ	385	JUNIPERUS CONFERTA BLUE PACIFICA	BLUE PACIFIC JUNIPER	AS SHOWN	1' CALIPER / 30" HIGH
CM	14	LAGENSTROEMIA INDICA	CREPE MYRTLE	AS SHOWN	2' CALIPER / 8-10' HIGH
DL	15	HEMEOCALYX SPP. SINGLE COLOR	DAY LILY	AS SHOWN	1 GALLON
EI	86	HEDERA HELIX	ENGLISH IVY	AS SHOWN	1 GALLON
GL	4	LIRIOPE MUSCARI	GIANT LIRIOPE	AS SHOWN	2 GALLON
LO	8	QUERCUS LAURIFOLIA	LAUREL CAK	AS SHOWN	2' CALIPER / 8-10' HIGH
PJ	328	JUNIPERUS DAURICA PARSONI	PARSONS JUNIPER	AS SHOWN	2 GALLON
RM	13	ACER RUBRUM	RED MAPLE	AS SHOWN	2' CALIPER / 8-10' HIGH
SM	4	MAGNOLIA GRANDIFLORA	SOUTHERN MAGNOLIA	AS SHOWN	2' CALIPER / 8-10' HIGH
TP	14	LIRIODENDRON TULIPIFERA	TULIP POPLAR	AS SHOWN	2' CALIPER / 8-10' HIGH
YC	7	PRUNUS VEICENSIS	YOSHINO CHERRY	AS SHOWN	2' CALIPER / 8-10' HIGH
GRASS	15,000	EREMOCHLOA OPHUROIDES	CENTIPED TURF	TOTAL SQUARE FEET OF GRASS / SOD	WHERE SHOWN



LANDSCAPING PLAN SCALE: 1" = 20'-0"