

1 THIRD FLOOR PLAN - MECHANICAL
 M103 1/8" = 1'-0"

KEYNOTES:
 APPLY THIS SHEET ONLY.
 ① PROVIDE FIRE RESISTANT SEAL AT ENTRY TO DUCT ENCLOSURE AND AT EACH FLOOR WITHIN ENCLOSURE.

HANG AS HIGH AS POSSIBLE IN ROOM.
 PROVIDE PAINTABLE WEATHERPROOF LOUVER WITH A MINIMUM OF 21 SQ. FT. OF FREE AREA. PROVIDE WITH INSECT SCREEN. ROUTE 6" OUTSIDE AIR DUCT FROM LOUVER TO AHU RETURN IN ROOM.
 PROVIDE TRANSFER OPENING ABOVE CEILING WITH A MINIMUM OF 0.33 SQ. FT. AND A FIRE DAMPER.

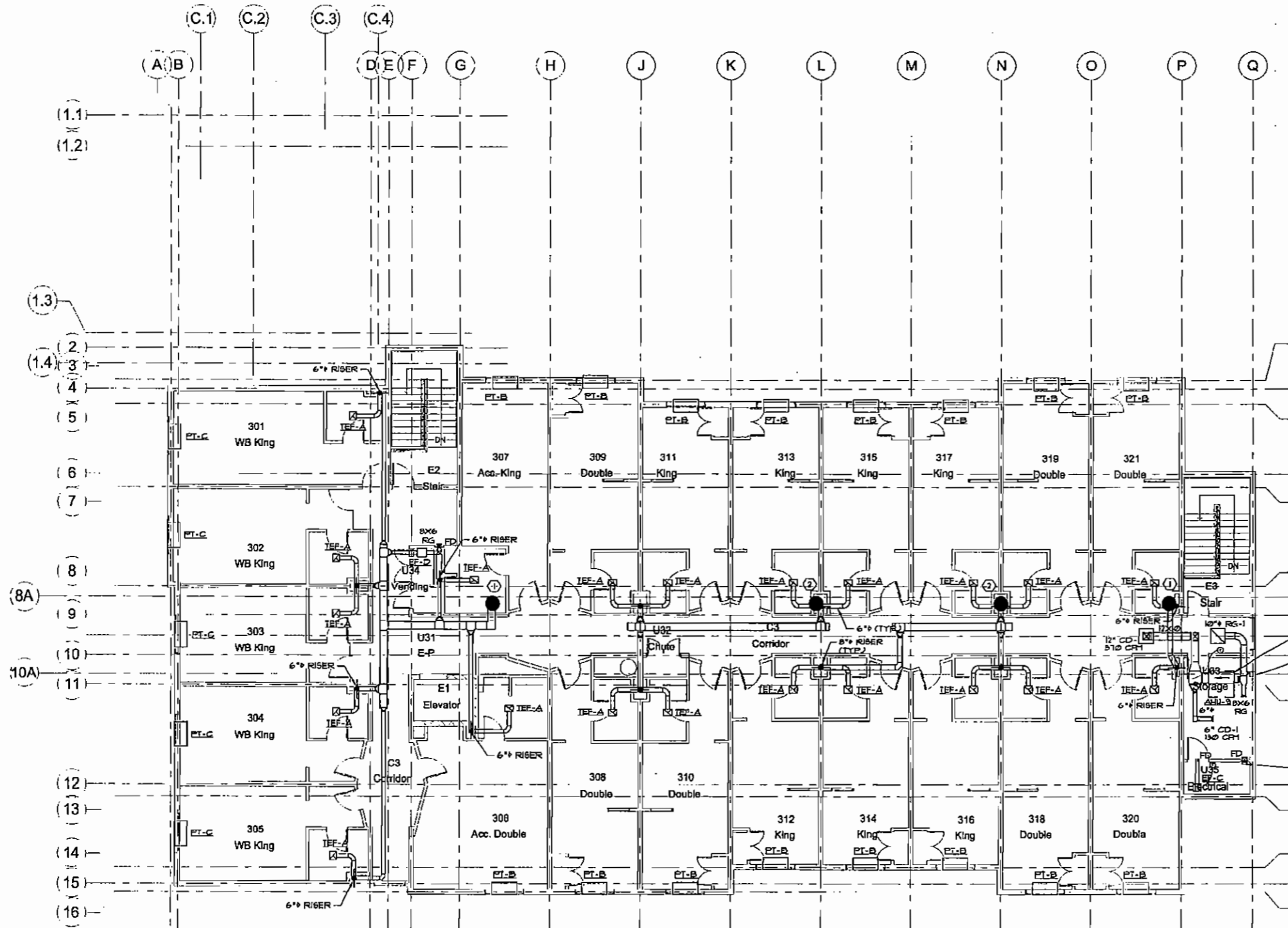


4360 Chamblee Dunwoody Road
 Suite 210
 Atlanta, GA 30341
 P (770) 451-8757 F (770) 451-8751

ARCHITECTURAL DESIGN WORKSHOP P.C.
 814 COVERED BRIDGE WAY, FAIRBURN, GA. 30213. TEL. 770 306 7464.
 CLIENT: Kasandas Properties
 PROJECT: New Comfort Suites Hotel
 Busbee Road, at Chestnut Road, Kennesaw, Ga. 30144

No.	Description	Date

Third Floor Plan - Mechanical		Scale: 1/8" = 1'-0"
Project Number	6002	
Date	2/12/07	
Drawn by	RW	
Checked by	MCG	
M103		



1 FOURTH FLOOR PLAN - MECHANICAL
 M104 1/8" = 1'-0"

- KEYNOTES:**
 APPLY THIS SHEET ONLY.
- ① EXTEND 6" AND 8" BATHROOM EXHAUST TO COMMON 12x12 DUCT. EXTEND 12x12 DUCT UP TO GREENHECK FASRA EXHAUST HOOD ON ROOF. HOOD SHALL HAVE A MIN. OF 10' SQ. FT. OF FREE AREA AND A MAX. PRESSURE DROP OF 0.1" WG.
 - ② EXTEND 8" BATHROOM EXHAUST TO COMMON 12x12 DUCT. EXTEND 12x12 DUCT UP TO GREENHECK FASRA EXHAUST HOOD ON ROOF. HOOD SHALL HAVE A MIN. OF 15 SQ. FT. OF FREE AREA AND A MAX. PRESSURE DROP OF 0.1" WG.

HANG AS HIGH AS POSSIBLE IN ROOM

PROVIDE PAINTABLE WEATHERPROOF LOUVER WITH A MINIMUM OF 0.1 SQ. FT. OF FREE AREA. PROVIDE WITH INSECT SCREEN. ROUTE 6" OUTSIDE AIR DUCT FROM LOUVER TO AHU RETURN IN ROOM.

PROVIDE TRANSFER OPENING ABOVE CEILING WITH A MINIMUM OF 0.35 SQ. FT. AND A FIRE DAMPER.

ARCHITECTURAL DESIGN WORKSHOP P.C.
 814 COVERED BRIDGE WAY, FAIRBURN, GA. 30213, TEL. 770 306 7464.

CLIENT: Kasandas Properties
 PROJECT: New Comfort Suites Hotel
 Babcoo Road, at Chestnut Road, Kennesaw, Ga. 30144

No.	Description	Date

Project number	6002
Date	2/12/07
Drawn by	RW
Checked by	MCS
Scale	1/8" = 1'-0"



4380 Chamblee Dunwoody Road
 Suite 210
 Atlanta, GA 30341
 P (770) 451-8157 F (770) 451-8781

HVAC NOTES

1. SCOPE OF WORK

- A. THE CONTRACTOR IS RESPONSIBLE FOR ALL WORK, MATERIALS, AND LABOR TO SATISFY A COMPLETE WORKING SYSTEM WHETHER SPECIFIED OR IMPLIED.
- B. ALL WORK IS TO BE PERFORMED IN STRICT COMPLIANCE WITH ALL APPLICABLE STATE AND LOCAL CODES AND ALL OTHER REGULATION GOVERNING WORK OF THIS NATURE.
- C. THE CONTRACTOR SHALL, BEFORE SUBMITTING ANY PROPOSAL, EXAMINE THE PROPOSED SITE AND SHALL DETERMINE FOR HIMSELF THE CONDITIONS THAT MAY AFFECT THE WORK. NO ALLOWANCE SHALL BE MADE IF THE CONTRACTOR FAILS TO MAKE SUCH EXAMINATIONS.
- D. ALL EQUIPMENT AND MATERIALS SHALL BE AS SPECIFIED OR "APPROVED EQUAL" BY THE ENGINEER.

2. PERMITS

- A. THE CONTRACTOR SHALL SECURE ALL PERMITS OR APPLICATIONS AND PAY ANY AND ALL FEES.

3. SHOP DRAWINGS

- A. SUBMIT MATERIAL LIST AND SHOP DRAWINGS FOR MAJOR EQUIPMENT TO THE ENGINEER FOR APPROVAL. THE CONTRACTOR SHALL SUBMIT FIVE SETS OF SHOP DRAWINGS AND THEY SHALL BE CLEARLY LABELED.

4. FLEXIBLE TYPE DUCT

- A. SHALL BE OF TWO ELEMENT SPIRAL CONSTRUCTION COMPOSED OF A CORROSION RESISTANT METAL SUPPORTING SPIRAL AND COATED FABRIC WITH A MINERAL BASE. FLEXIBLE DUCT CONNECTORS SHALL BE LISTED BY U.L., CLASS I DUCTS, AND SHALL HAVE A FLAME SPREAD RATING NOT EXCEEDING 25 AND A SMOKE DEVELOPED RATING NOT EXCEEDING 50.
- B. USE OF FLEXIBLE DUCTWORK SHALL BE LIMITED TO NO MORE THAN 7 LINEAR FEET PER RUN.
- C. CONTRACTOR SHALL BE CAREFUL SO AS NOT TO KINK OR COLLAPSE FLEXIBLE DUCT.

5. REFRIGERANT PIPING

- A. CONTRACTOR SHALL PROVIDE AND INSTALL REFRIGERANT PIPING IN ACCORDANCE WITH THE MANUFACTURER'S RECOMMENDATIONS AND IN SUCH A WAY AS TO BE INCONSPICUOUS AND FREE FROM ANY POSSIBLE CONDENSATION. INSULATE REFRIGERANT LINES WITH ARMOUR-FLEX TYPE INSULATION.

6. DUCTWORK

- A. THE DUCTWORK SHALL BE CONSTRUCTED IN ACCORDANCE WITH THE "SMACNA" APPLICABLE MANUALS. ALL DUCTWORK SHALL BE THE LOW VELOCITY TYPE, UNLESS SPECIFIED OTHERWISE.
- B. CONTRACTOR SHALL PROVIDE AND INSTALL APPROVED FIRE DAMPERS AND ACCESS PANELS IN ANY AND ALL DUCTWORK WHICH PENETRATES A HORIZONTAL OR VERTICAL FIRE PARTITION, OR AS OTHERWISE SHOWN ON DRAWINGS.
- C. ALL BRANCH DUCTS TO HAVE VOLUME DAMPERS.
- D. SMOOTH TURN RADIUS DUCTWORK OR TURNING VANES SHALL BE USED THROUGHOUT WHERE FLOW EXCEEDS 150 CFM.
- E. ALL DUCT JOINTS TO BE SEALED IN ACCORDANCE WITH "SMACNA" STANDARDS AND ACCEPTED GOOD PRACTICE.
- F. ALL DUCT DIMENSIONS SHOWN ARE NET INSIDE VALUES. DIMENSIONS MAY BE CHANGED SO LONG AS THE NET FREE FACE AREA IS MAINTAINED.
- G. ALL CONCEALED DUCTWORK SHALL BE INSULATED WITH 1-1/2" FIBERGLASS INSULATING BLANKET WITH ALUMINUM FOIL FACING.
- H. ALL SUPPLY AND RETURN DUCTWORK 15 FEET DOWNSTREAM OF THE HVAC UNIT SHALL BE INTERNALLY LINED WITH A 1/2" ACOUSTICAL DUCT LINER.

- I. ALL EXTERIOR DUCTWORK SHALL BE COMPLETELY SEALED WITH WEATHERPROOF MASTIC COATING.

7. DRAINAGE PIPING (CONDENSATE)

- A. SHALL BE SCHEDULE 40 PVC PIPE. PITCH HORIZONTAL LINES 1" IN 10'-0".

8. HVAC CONTROLS

- A. CONTRACTOR TO SUPPLY AND INSTALL ALL CONTROL WIRING AND THERMOSTATS AS REQUIRED. SEE APPLICABLE NOTES.

9. PIPE SUPPORTS

- A. ALL PIPE SHALL BE SUPPORTED FROM THE BUILDING STRUCTURE IN A NEAT AND WORKMANLIKE MANNER. THE USE OF WIRE OR METAL STRAP TO SUPPORT PIPES WILL NOT BE PERMITTED. SPACING OF PIPE SUPPORTS

10. GAS PIPING

- A. SHALL BE SCHEDULE 40 BLACK STEEL PIPE WITH MALLEABLE IRON FITTINGS. WHERE GAS PIPE CONNECTS TO EQUIPMENT, IT SHALL BE PROVIDED WITH A DRIP LEG THE FULL SIZE OF THE RUNOUT, A 100% SHUT-OFF VALVE AND A UNION. GAS PIPING CONTAINING PRESSURE GREATER THAN 9" W.G. SHALL BE SCHEDULE 40 BLACK STEEL PIPE WITH WELDED JOINTS.

11. MISCELLANEOUS

- A. ALL EXTERIOR OPENINGS TO BE PROPERLY CAULKED AND SEALED WITH A SEALANT OF HIGH QUALITY AND LONG LIFE. TO PREVENT INFILTRATION OF OUTSIDE AIR INTO CONDITIONED SPACE.
- B. COORDINATE INSTALLATION OF ALL ROOF FLASHING AT ROOF PENETRATION.
- C. DO NOT SCALE THIS DRAWING FOR EXACT DIMENSIONS. VERIFY ALL FIGURES, CONDITIONS, AND DIMENSIONS AT THE JOB SITE.
- D. THE MECHANICAL PLANS ARE INTENDED TO BE DIAGRAM-MATIC AND ARE BASED ON ONE MANUFACTURER'S EQUIPMENT. THEY ARE NOT INTENDED TO SHOW EVERY ITEM IN ITS EXACT LOCATION, THE EXACT DIMENSIONS, OR ALL THE DETAILS OF THE EQUIPMENT. THE CONTRACTOR SHALL VERIFY THE ACTUAL DIMENSIONS OF THE EQUIPMENT PROPOSED TO ENSURE THAT THE EQUIPMENT WILL FIT IN THE AVAILABLE SPACE.
- E. ALL WALL PENETRATIONS SHALL BE PROPERLY FRAMED AND SEALED WEATHERPROOF. ANY DAMAGE BLOCK, BRICK, PAINT, ETC. SHALL BE REPAIRED TO PRE-CONSTRUCTION LEVELS TO OWNER'S SATISFACTION.

12. TESTING AND BALANCING

- A. TEST AND BALANCE SHALL BE PERFORMED BY A CERTIFIED TEST AND BALANCE AGENT. TEST AND BALANCE REPORTS SHALL BE PROVIDED TO OWNER.

13. GUARANTEE

- A. MATERIALS, EQUIPMENT AND INSTALLATION SHALL BE GUARANTEED FOR A PERIOD OF ONE(1) YEAR FROM DATE OF ACCEPTANCE. DEFECTS WHICH APPEAR DURING THAT PERIOD SHALL BE CORRECTED AT THIS CONTRACTOR'S EXPENSE.
- B. FOR THE SAME PERIOD, THE MECHANICAL CONTRACTOR SHALL BE RESPONSIBLE FOR ANY DAMAGE TO PREMISES CAUSED BY DEFECTS IN WORKMANSHIP OR IN THE WORK OR EQUIPMENT FURNISHED AND/OR INSTALLED BY HIM.

GRILLE - REGISTER - DIFFUSER SCHEDULE				
EQUIPMENT NO.	TYPE	MANUFACTURER & MODEL	FINISH	OPTIONS-ACCESSORIES
4" CD-1	CEILING - LAY IN	TITUS - TMS 4	WHITE	
6" CD-1	CEILING - LAY IN	TITUS - TMS 6	WHITE	
8" CD-1	CEILING - LAY IN	TITUS - TMS 8	WHITE	
8" CD-2	CEILING - LAY IN	TITUS - TMS 8	WHITE	
10" CD-1	CEILING - LAY IN	TITUS - TMS 10	WHITE	
12" CD-1	CEILING - LAY IN	TITUS - TMS 10	WHITE	
RG	RETURN GRILLE	TITUS - 350R	WHITE	
RG-1	RETURN GRILLE	TITUS - 50F	WHITE	
SR	SUPPLY REGISTER	TITUS - 300	WHITE	
NOTES:				

ELECTRIC WALL HEATER SCHEDULE							
EQUIPMENT NO.	FAN HP	ELECTRIC HEATER		ELECTRICAL REQUIREMENTS		MANUFACTURER & MODEL	OPTIONS-ACCESSORIES
		KW	BTU/H	V.-PH.	FULL LOAD AMPS		
EW-1-A	F	2.0	6825	208/1	9.6	OMARK AMH408	1
NOTES:							
1. PROVIDE WITH ALL REQUIRED MOUNTING ACCESSORIES AND THERMOSTAT SET TO 70° F.							

PACKAGED TERMINAL HEAT PUMP UNIT SCHEDULE										
UNIT	TOTAL CFM	OUTSIDE AIR CFM	EXT. STATIC PRESS.	COOLING TOTAL (MBH)	ENTERING DB/WB	AMBIENT TEMP.	HEAT PUMP COP	VOLTAGE/PHASE	MANUFACTURER & MODEL	NOTES
PT-A	195	30	0.6"	7.4	80/67	85 F	3.6	208/1	TRANE PTH0701UD	1, 2
PT-B	240	30	0.6"	9.1	80/67	95 F	3.2	208/1	TRANE PTH0901UD	1, 2
PT-C	310	30	0.6"	12.0	80/67	95 F	3.3	208/1	TRANE PTH1201UD	1, 2
NOTES:										
1. UNIT SHALL HAVE INTERNAL THERMOSTAT. PROVIDE WITH CONDENSATE SLINGER PUMP OPTION ALLOWING FOR EVAPORATION OF ALL CONDENSATE ON CONDENSER COILS.										
2. OR APPROVED EQUAL UNITS BY CARBIDE.										

FAN SCHEDULE									
EQUIPMENT NO.	SERVICE	LOCATION	CFM	STATIC PRESS. (IN. W.G.)	MOTOR		MANUFACTURER & MODEL	OPTIONS-ACCESSORIES	
					HP	VOLT.-PH.			
EF-A	POOL EQUIPMENT	CEILING	200	0.125	0.25	110 - 1	GREENHECK - 890-90-5	1, 3	
EF-B	MECH. ROOM EXHAUST	CEILING	1000	0.125		110 - 1	GREENHECK - 890-90-5	1, 3	
EF-C	ELEC. ROOM EXHAUST	CEILING	300	0.125	F	110 - 1	GREENHECK - SP-A390	1, 3	
EF-D	VENDING AREA EXHAUST	CEILING	600	0.125	F	110 - 1	GREENHECK - SQ-95-0	1,	
TEF-A	BATHROOM EXHAUST	CEILING	35	0.125	F	110 - 1	GREENHECK - SP-C50	1, 2	
TEF-B	BATHROOM EXHAUST	CEILING	75	0.125	F	110 - 1	GREENHECK - SP-B90	1, 2	
NOTES:									
1. FAN SHALL HAVE INTEGRAL BACKDRAFT DAMPER.									
2. FAN SHALL BE CONTROLLED BY WALL MOUNTED SWITCH.									
3. PROVIDE WITH THERMOSTAT ON WALL IN ROOM SERVED.									

SPLIT SYSTEM HEAT PUMP SCHEDULE													
EQUIPMENT NO.	SUPPLY CFM	OUTSIDE AIR (CFM)	INDOOR UNIT			ELECTRIC HEAT KW	COOLING CAPACITY		OUTDOOR UNIT			MANUFACTURER & MODEL	OPTIONS-ACCESSORIES
			VOLT.-PH.	MCA	MOP		MBH	AMBIENT TEMP.	VOLT.-PH.	MCA	MOP		
AH/QU-1	1000	120	208/3	37	40	7.2	27.5	95	208/1	13.8	20	TRANE TRB3030A3/TEC3030P13/BATHTR3410	1, 2, 3
AH/QU-2	600	141	208/3	45	45	7.2	17.1	95	208/1	8	15	TRANE TRB3018A1/TEC3018P13/BATHTR3410	1, 2, 3
AH/QU-3	4000	1260	208/3	98	100	34.9	124	95	208/3	48.1	70	TRANE TRA120A3/TME120A/BATHTR335A	1, 2, 3
AH/QU-4	600	148	208/1	24	25	3.6	17.1	95	208/1	8	15	TRANE TRB3018/TEC3018P13/BATHTR1405	1, 2, 3
AH/QU-5	600	78	208/1	37	40	5.78	17.1	95	208/1	8	15	TRANE TRB3048A1/TEC3018P13/BATHTR1408	1, 2, 3
AH/QU-6	600	64	208/1	37	40	5.78	17.1	95	208/1	8	15	TRANE TRB3048A1/TEC3018P13/BATHTR1408	1, 2, 3
AH/QU-7	600	64	208/1	37	40	5.78	17.1	95	208/1	8	15	TRANE TRB3048A1/TEC3018P13/BATHTR1408	1, 2, 3
AH/QU-8	600	79	208/3	37	40	7.2	17.1	95	208/1	8	15	TRANE TRB3018A1/TEC3018A1/BATHTR3410	1, 2, 3
AH/QU-9	800	82	208/3	45	45	11.53	22.8	95	208/1	12	20	TRANE TRB3024A1/TEC3024A1/BATHTR3415	1, 2, 3
AH/QU-10	1400	350	208/3	21	30	13	41	95	208/1	2	4	DESERT AIRE PH 300/ROC0003	1, 2, 3
NOTES:													
1. PROVIDE WITH T-DAY PROGRAMMABLE THERMOSTAT LOCATED IN SPACE SERVED.													
2. OUTSIDE AIR PROVIDED IN ACCORDANCE WITH STANDARD MECHANICAL CODE TABLE 403.3.													
3. CONTRACTOR SHALL PROVIDE REFRIGERANT LINE SETS INSTALLED AND SIZED IN ACCORDANCE WITH MANUFACTURER'S RECOMMENDATIONS.													

ELECTRIC UNIT HEATER SCHEDULE					
EQUIPMENT NO.	FAN HP	ELECTRIC HEATER KW	ELECTRICAL REQUIREMENTS V.-PH.	MANUFACTURER & MODEL	OPTIONS-ACCESSORIES
NOTES:					
1. PROVIDE WITH ALL REQUIRED MOUNTING ACCESSORIES AND THERMOSTAT SET TO 70° F.					



ARCHITECTURAL DESIGN WORKSHOP P.C.

814 COVERED BRIDGE WAY, FAIRBURN, GA. 30213. TEL 770 306 7464.

Kasandas Properties

New Comfort Suites Hotel
Babco Road, at Chestnut Road, Kennesaw, Ga. 30144

No.	Description	Date

SCHEDULES & NOTES -- HVAC

Project Number: 6002

Date: 2/2/07

Drawn by: RW

Checked by: MCG

Scale: 1/8" = 1'-0"

M301

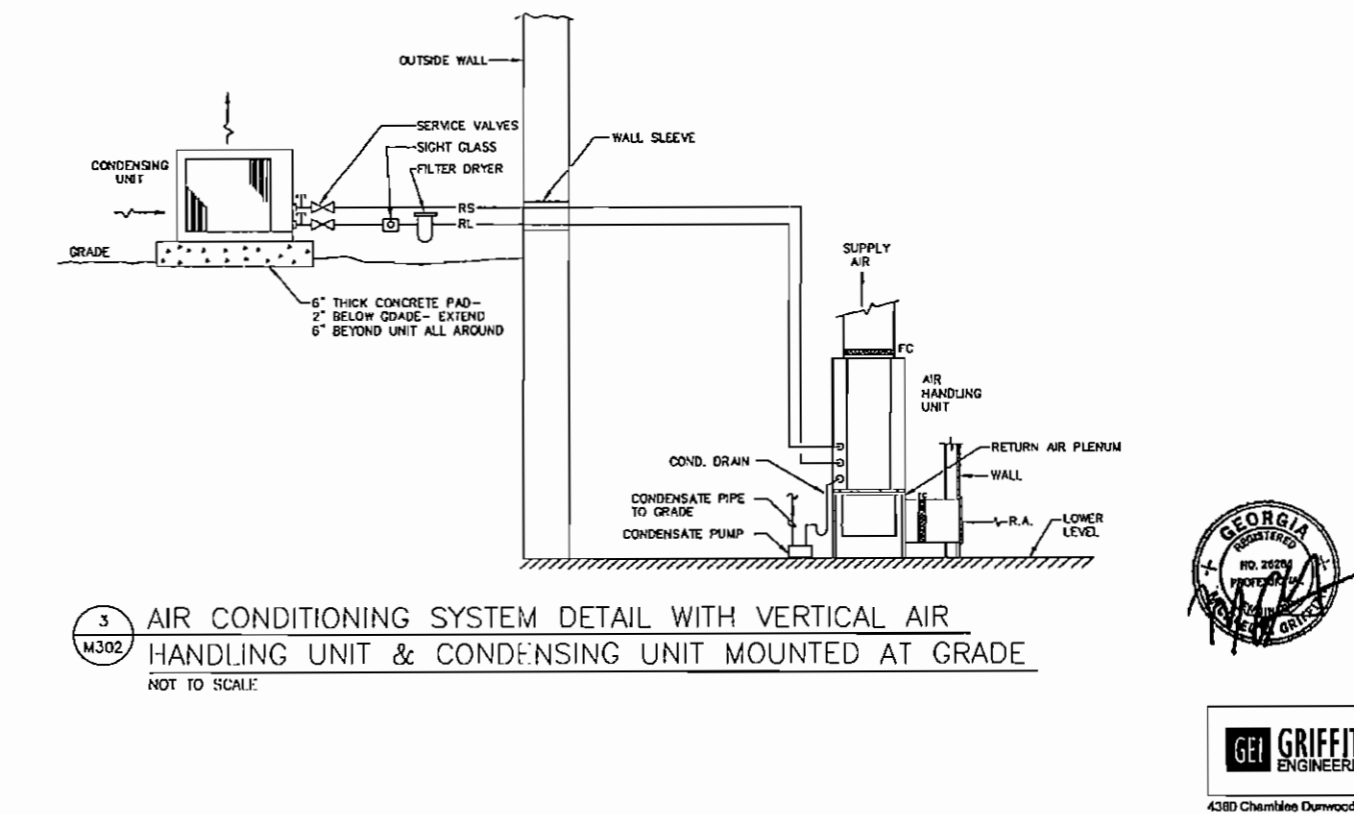
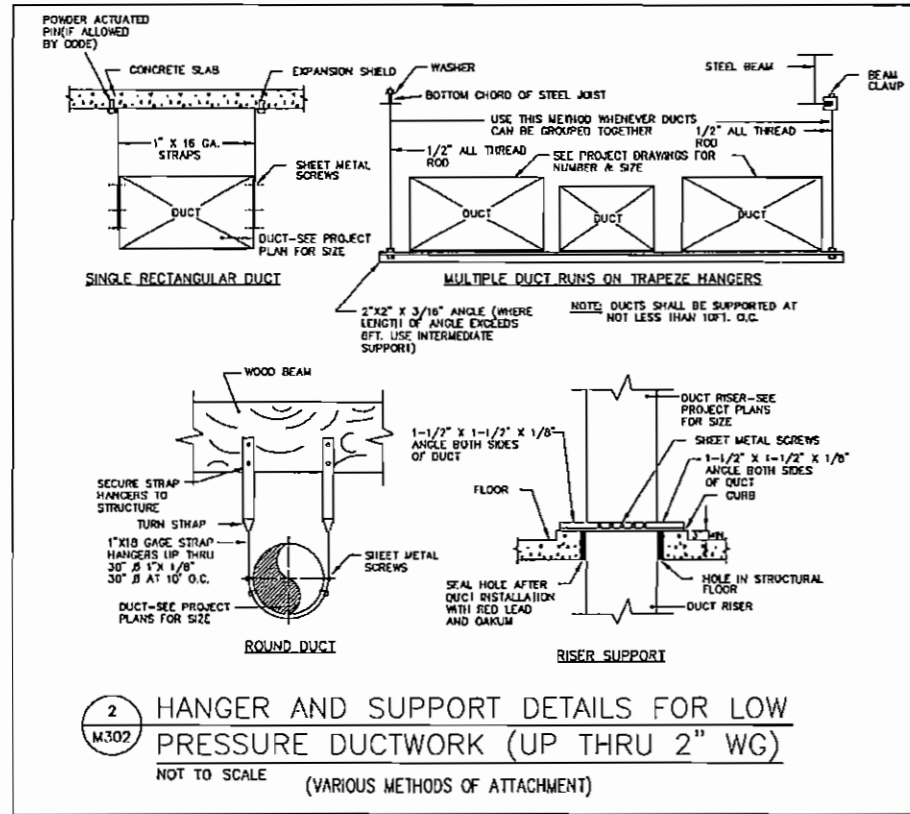
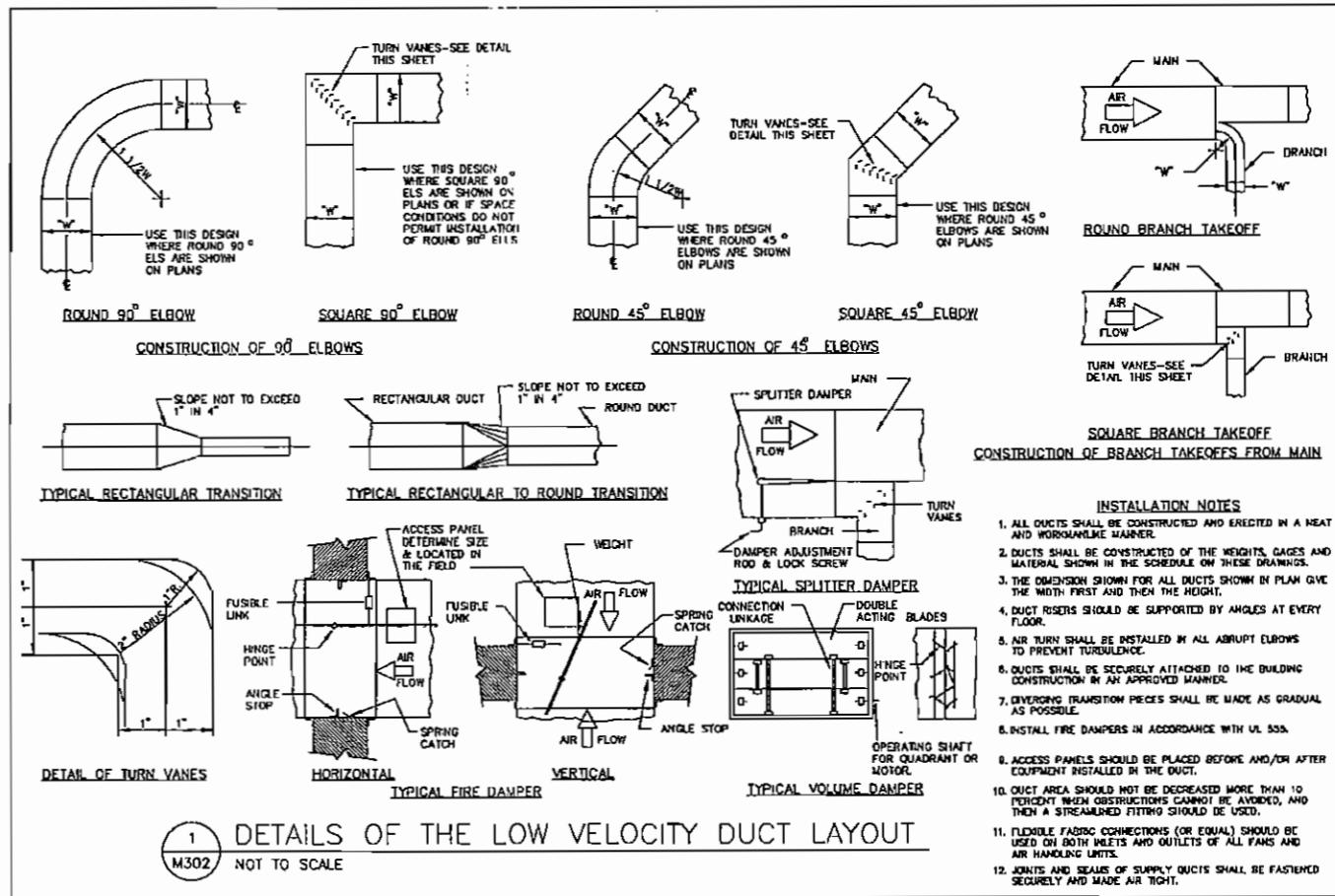
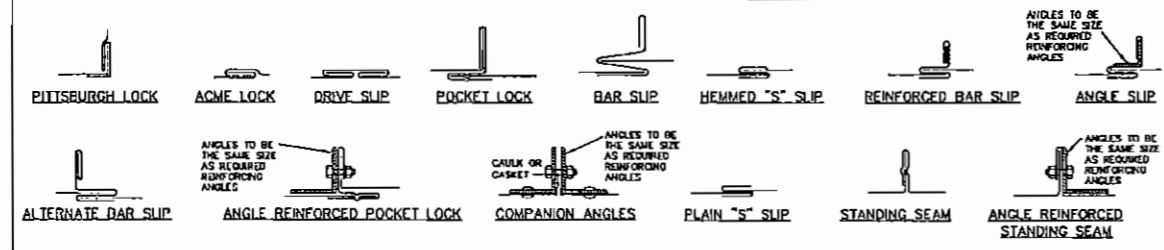


4380 Chamblow Dunwoody Road
Suite 210
Atlanta, GA 30341
P (770) 451-8757 F (770) 451-6761

THICKNESS & REINFORCING SCHEDULE - * LOW PRESSURE DUCTWORK

*NOTE: LOW PRESSURE DUCTWORK SHALL BE DUCTWORK IN WHICH THE PRESSURE DOES NOT EXCEED 2" WATER GAUGE.

GREATEST DUCT DIVISION	STEEL DUCTS U.S. STANDARD GAUGE	ALUMINUM DUCTS B & S GAUGE	LONGITUDINAL SEAM	TRANSVERSE JOINT SMALLEST DIMENSION	TRANSVERSE JOINT GREATEST DIMENSION	REINFORCING (ALL DUCTS 18" THRU 34" SHALL BE CROSSBROKEN)
12" OR LESS	26	24(0.020)	PITTSBURGH OR ACME LOCK	DRIVE SLIP OR POCKET LOCK OR BAR SLIP	PLAIN "S" SLIP OR POCKET LOCK OR BAR SLIP	NONE REQUIRED
12" THRU 18"	24	22(0.025)	PITTSBURGH OR ACME LOCK	DRIVE SLIP OR POCKET LOCK OR BAR SLIP	PLAIN "S" SLIP OR POCKET LOCK OR BAR SLIP	NONE REQUIRED
18" THRU 30"	24	22(0.025)	PITTSBURGH OR ACME LOCK	HEMMED "S" SLIP OR BAR SLIP OR DRIVE SLIP OR 1" POCKET LOCK	HEMMED "S" SLIP OR BAR SLIP OR DRIVE SLIP OR 1" POCKET LOCK	IF TRANSVERSE JOINTS ARE LOCATED 4'-0" OR LESS ON CENTER NO REINFORCING IF ON 8'-0" CENTERS REINFORCE WITH 1"x1/2"x1/8" ANGLES AT 4 FT. O.C. FASTENED ON 8" CENTERS
31" THRU 42"	22	20(0.032)	PITTSBURGH OR ACME LOCK	DRIVE SLIP 1/8" OR LESS BAR SLIP REINFORCED BAR SLIP OR POCKET LOCK	BAR SLIP OR REINFORCED BAR SLIP OR POCKET LOCK	IF TRANSVERSE JOINTS ARE LOCATED 4'-0" OR LESS ON CENTER NO REINFORCING IF ON 8'-0" CENTERS REINFORCE WITH 1"x1/2"x1/8" ANGLES AT 4 FT. O.C. FASTENED ON 8" CENTERS
43" THRU 54"	22	20(0.032)	PITTSBURGH LOCK	1 1/4" BAR SLIP, OR REINFORCED BAR SLIP, OR 1 1/2" POCKET LOCK	1 1/4" BAR SLIP, OR REINFORCED BAR SLIP, OR 1 1/2" POCKET LOCK	IF TRANSVERSE JOINTS ARE LOCATED 4'-0" OR LESS ON CENTER NO REINFORCING IF ON 8'-0" CENTERS REINFORCE WITH 1"x1/2"x1/8" ANGLES AT 4 FT. O.C. FASTENED ON 8" CENTERS
55" THRU 66"	20	18(0.040)	PITTSBURGH LOCK	1 1/4" BAR SLIP, OR REINFORCED BAR SLIP, OR 1 1/2" POCKET LOCK	1 1/4" BAR SLIP, OR REINFORCED BAR SLIP, OR 1 1/2" POCKET LOCK	IF TRANSVERSE JOINTS ARE LOCATED 4'-0" OR LESS ON CENTER NO REINFORCING IF ON 8'-0" CENTERS REINFORCE WITH 1"x1/2"x1/8" ANGLES AT 4 FT. O.C. FASTENED ON 8" CENTERS
67" THRU 84"	20	18(0.040)	PITTSBURGH LOCK	REINFORCED BAR SLIP, OR ANGLE SLIP, ALTERNATE BAR SLIP, OR ANGLE REINFORCED POCKET LOCK	REINFORCED BAR SLIP, OR ANGLE SLIP, ALTERNATE BAR SLIP, OR ANGLE REINFORCED POCKET LOCK	REINFORCE ALL SIDES OVER 66" WITH 1 1/2"x1/2"x1/8" ANGLES ON 2'-0" CENTERS. SIDES UNDER 66" NEED NO REINFORCING IF JOINTS ARE ON 4'-0" CENTERS. IF JOINTS ARE ON 8'-0" CENTERS REINFORCE WITH 1 1/2"x1 1/2"x1/8" ANGLES ON 4'-0" CENTERS.
85" THRU 96"	18	16(0.051)	(LONGITUDINAL SEAM MAY BE STANDING SEAM)	1 1/2" COMPANION ANGLES, OR ANGLE REINFORCED POCKET LOCK, OR 1 1/2" ANGLE SLIP OR REINFORCED BAR SLIP	1 1/2" COMPANION ANGLES, OR ANGLE REINFORCED POCKET LOCK, OR 1 1/2" ANGLE SLIP OR REINFORCED BAR SLIP	REINFORCE ALL SIDES OVER 84" WITH 2"x2"x1/4" ANGLES ON 2'-0" CENTERS. SIDES UNDER 84" REINFORCE WITH 1 1/2"x1 1/2"x1/8" ANGLES ON 2'-0" CENTERS. SIDES 84" OR LESS NEED NO REINFORCING IF JOINTS ARE ON 4'-0" CENTERS. REINFORCE ALL SIDES UNDER 84" WITH 1 1/2"x1 1/2"x1/8" ANGLES IF JOINTS ARE 8'-0" ON CENTER. NO REINFORCING IF JOINTS ARE 4'-0" ON CENTER.
OVER 96"	18	16(0.051)	(LONGITUDINAL SEAM MAY BE STANDING SEAM)	2" COMPANION ANGLE, OR ANGLE REINFORCED POCKET LOCK OR REINFORCED BAR SLIP	2" COMPANION ANGLE, OR ANGLE REINFORCED POCKET LOCK OR REINFORCED BAR SLIP	REINFORCE ALL SIDES OVER 96" WITH 2"x2"x1/4" ANGLES ON 2'-0" CENTERS. SIDES UNDER 96" WITH 1 1/2"x1 1/2"x1/8" ANGLES ON 2'-0" CENTERS. REINFORCE ALL SIDES UNDER 96" WITH 1 1/2"x1 1/2"x1/8" ANGLES IF JOINTS ARE 8'-0" ON CENTER. NO REINFORCING IF JOINTS ARE 4'-0" ON CENTER.



ARCHITECTURAL DESIGN WORKSHOP P.C.
814 COVERED BRIDGE WAY, FAIRBURN, GA. 30213. TEL 770 306 7464.
CLIENT PROJECT
Kasandas Properties
New Comfort Suites Hotel
Babers Road, at Chastain Road, Kennesaw, Ga. 30144

No.	Description	Date

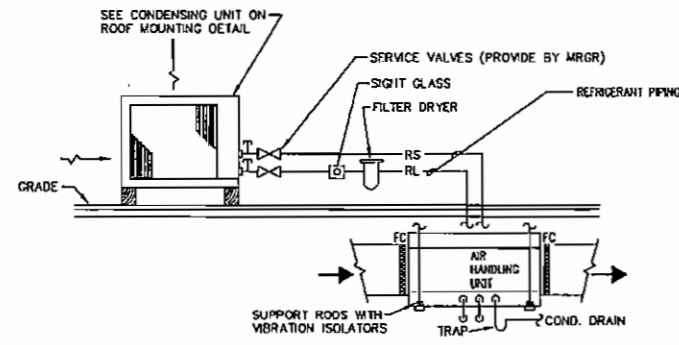
SCHEDULES & DETAILS - HVAC

Project number: 6002
Date: 2/12/07
Drawn by: RW
Checked by: MCS
Scale: 1/8" = 1'-0"

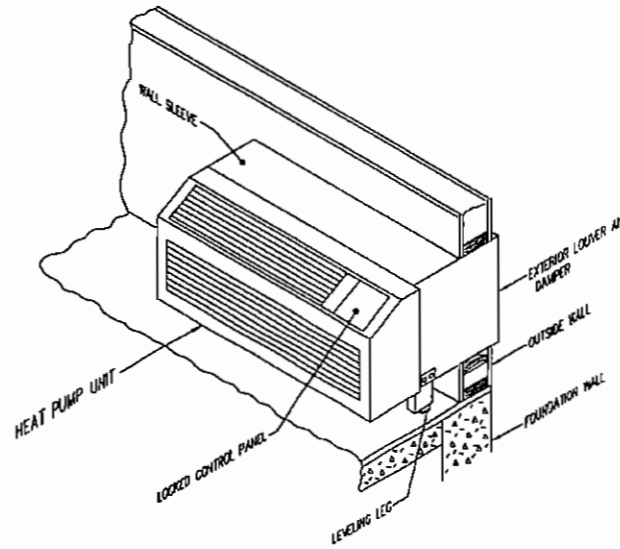
M302



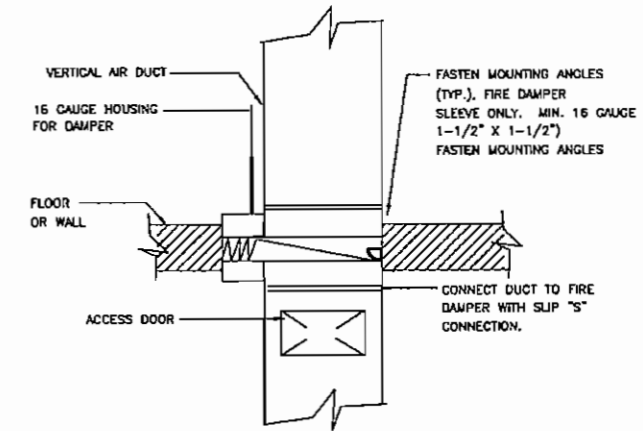
438D Chamblis Dumwoody Road
Suite 210
Atlanta, GA 30341
P (770) 451-6757 F (770) 451-6761



1 AIR CONDITIONING SYSTEM DETAIL WITH HORIZONTAL AIR HANDLING UNIT & GRADE MOUNTED CONDENSING UNIT
M303 NOT TO SCALE

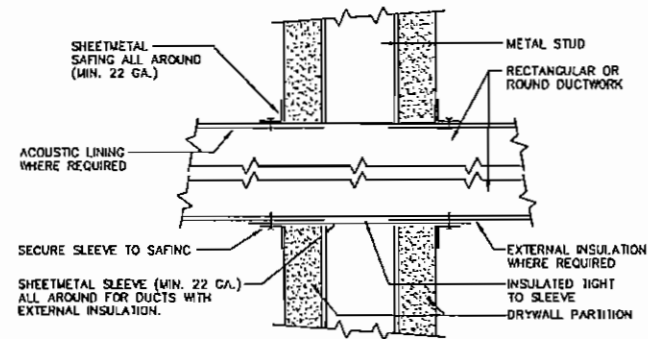


2 PACKAGED THROUGH WALL TERMINAL HEAT PUMP DETAIL
M303 NOT TO SCALE

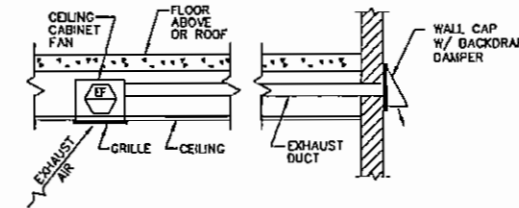


3 FIRE DAMPER INSTALLATION DETAIL
M303 NOT TO SCALE

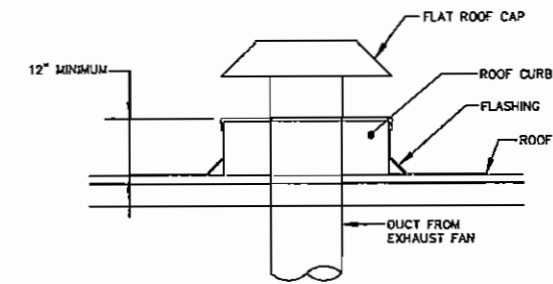
NOTES:
1. DAMPER ASSEMBLY INSTALLED IN AND FASTENED TO THE SLEEVE.
2. MAINTAIN FULL DUCT SIZE, DAMPER HOUSING SHALL NOT OBSTRUCT AIR FLOW, (TYPE "B").
3. MOUNTING SHOWN IS VERTICAL INSTALLATION, HORIZONTAL INSTALLATION IS SIMILAR.



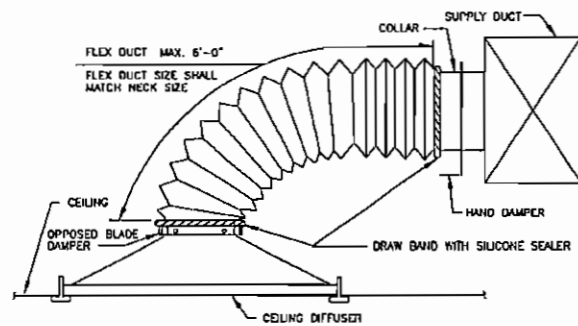
4 DUCT PENETRATION THROUGH NON-FIRE RATED WALL
M303 NOT TO SCALE



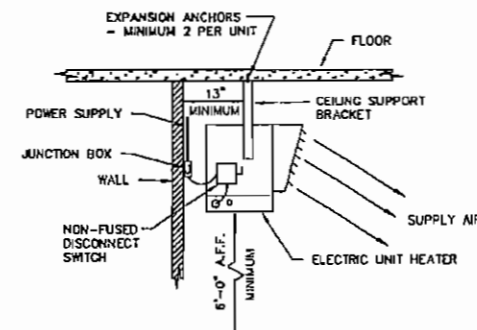
5 BATHROOM EXHAUST FAN DETAIL - SIDEWALL DISCHARGE
M303 NOT TO SCALE



6 FLAT ROOF CAP DETAIL
M303 NOT TO SCALE



7 TYPICAL DIFFUSER CONNECTION
M303 NOT TO SCALE (SIDE OF DUCT CONNECTION)



8 ELECTRIC UNIT HEATER MOUNTING DETAIL
M303 NOT TO SCALE

ARCHITECTURAL DESIGN WORKSHOP P.C.

814 COVERED BRIDGE WAY, FAIRBURN, GA. 30213, TEL. 770 306 7464.

Kasandas Properties

New Comfort Suites Hotel

Burbon Road, at Chastain Road, Kennesaw, Ga. 30144

CLIENT

PROJECT

No.	Description	Date

DETAILS - HVAC

Project number	6002
Date	2/12/07
Drawn by	RW
Checked by	MCB
Scale	1/8" = 1'-0"

M303



4380 Chambliss Dunwoody Road
Suite 210
Atlanta, GA 30341
P (770) 451-8757 F (770) 451-8761