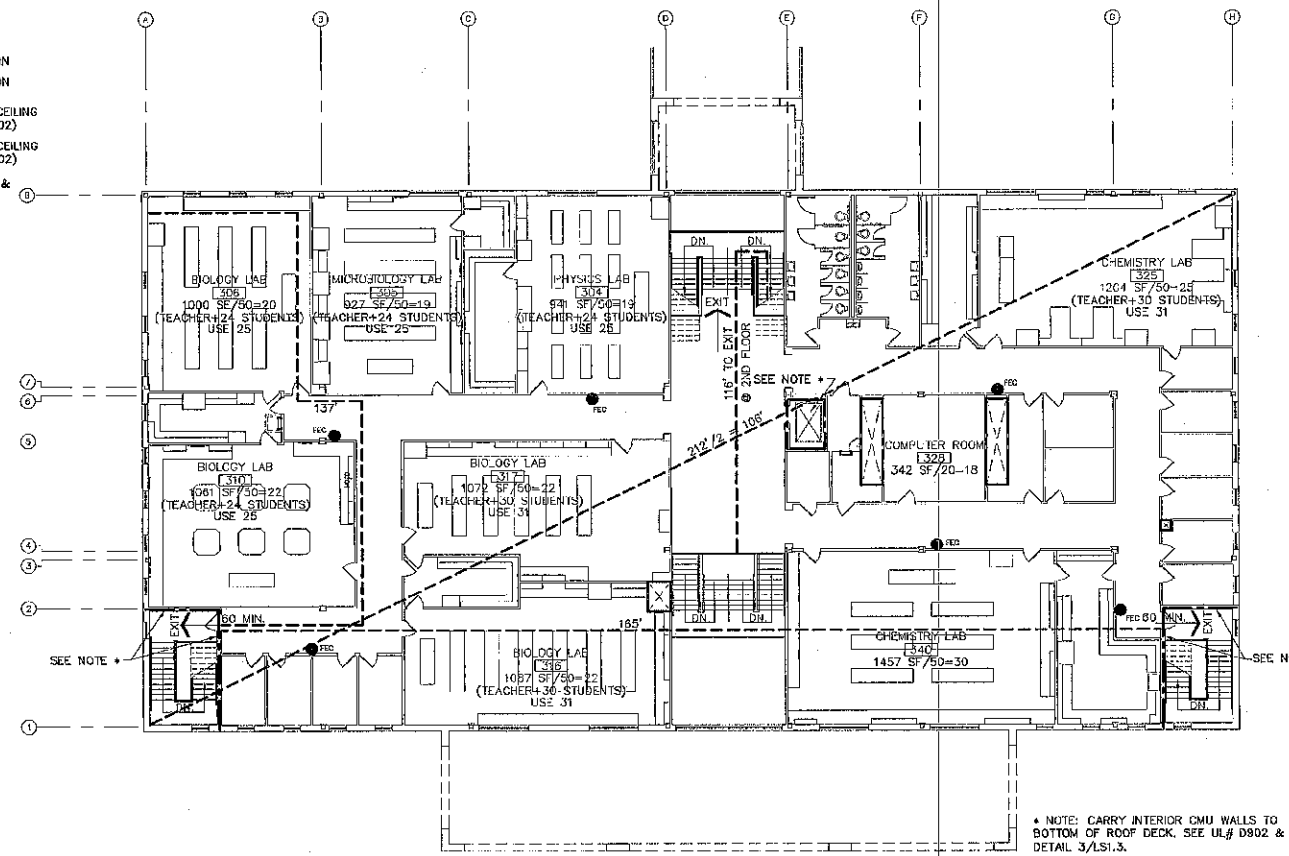
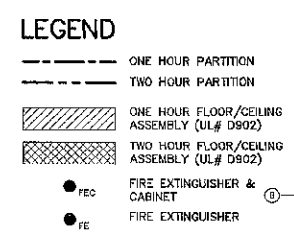
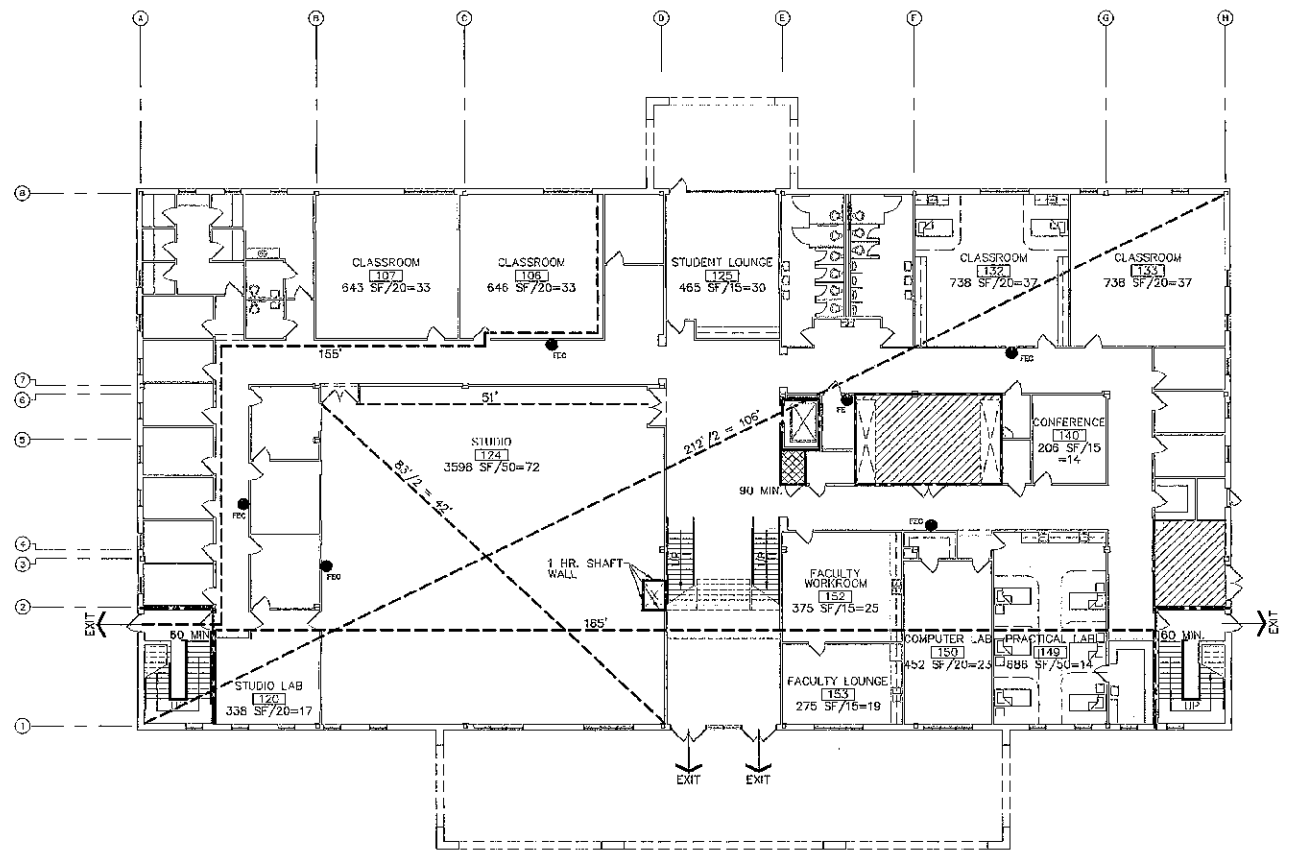


SECOND FLOOR LIFE SAFETY PLAN
 1/16" = 1'-0"
 14,092 SQ.FT. HTD.
 360 SQ.FT. UNHTD.
 PROJECT NORTH



THIRD FLOOR LIFE SAFETY PLAN
 1/16" = 1'-0"
 17,303 SQ.FT. HTD.
 PROJECT NORTH



FIRST FLOOR LIFE SAFETY PLAN
 1/16" = 1'-0"
 17,998 SQ.FT. HTD.
 2,395 SQ.FT. UNHTD.
 PROJECT NORTH

FIRST FLOOR:

CLASSROOM 106	648SF/20SF=33
CLASSROOM 107	643SF/20SF=33
STUDIO LAB 120	338SF/20SF=17
STUDIO 124	3,596SF/50SF=72
CLASSROOM 132	738SF/20SF=37
CLASSROOM 133	738SF/20SF=37
CONFERENCE 140	204SF/15SF=14
PRACTICAL LAB 149	685SF/50SF=14
COMPUTER LAB 149	452SF/20SF=23
FACULTY LOUNGE 152	275SF/15SF=19
FACULTY WORKROOM 151	375SF/15SF=25
	8,685SF 324

BUSINESS (17,998SF-8,685SF) 9,303SF/100SF=94
TOTAL (324+94) = 418 PEOPLE

SECOND FLOOR:

CLASSROOM 205	599SF/20SF=30
CLASSROOM 204	573SF/20SF=29
SURG. TECH. LAB 229	560SF/20SF=28
CLASSROOM 230	595SF/20SF=30
CLASSROOM 235	327SF/20SF=17
LAB 249	713SF/50SF=15
CLASSROOM 243	744SF/20SF=38
	4,111SF 187

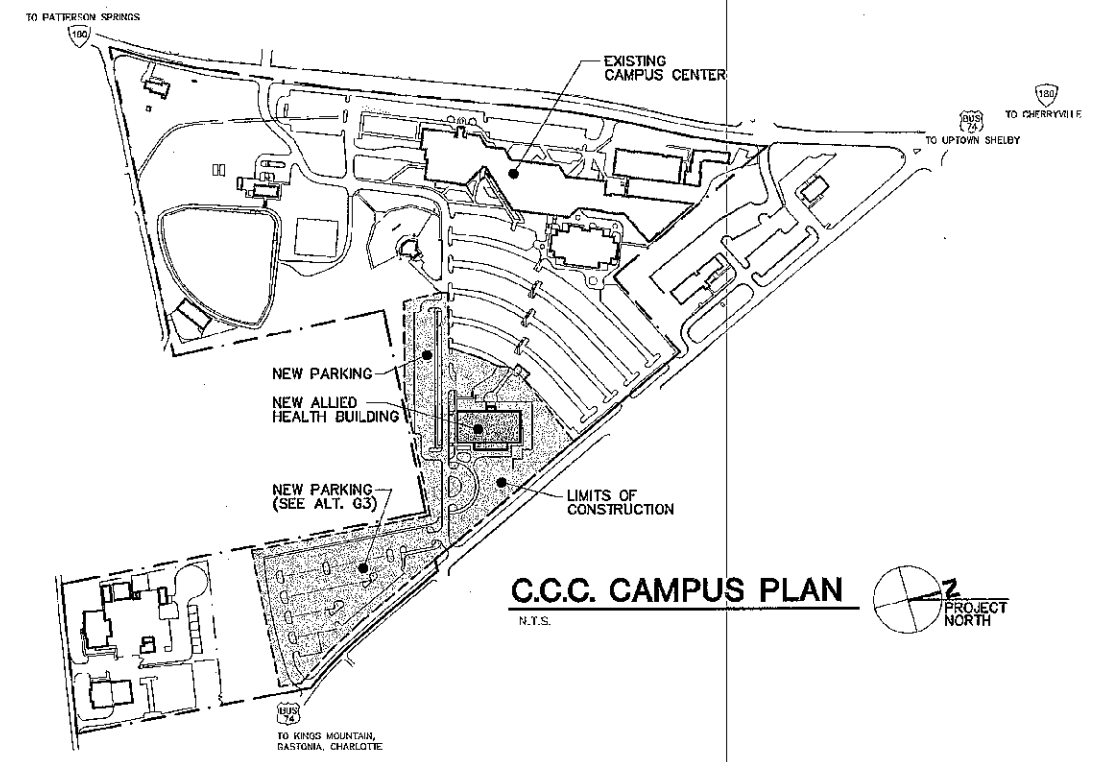
BUSINESS (14,092SF-4,111SF) 9,981SF/100SF=100
TOTAL (187+100) = 287 PEOPLE

THIRD FLOOR:

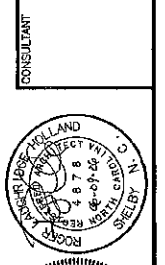
BIOLOGY LAB 306	1,000SF/50SF=20 (25)
MICROBIOLOGY LAB 305	927SF/50SF=19 (25)
PHYSICS LAB 304	911SF/50SF=19 (25)
CHEMISTRY LAB 325	1,204SF/50SF=25 (31)
COMPUTER ROOM 328	342SF/20SF=18
A/V ROOM 329	115SF/20SF=6
CHEMISTRY LAB 340	1,457SF/50SF=30 (25)
BIOLOGY LAB 316	1,087SF/50SF=22 (31)
BIOLOGY LAB 317	1,072SF/50SF=22 (31)
BIOLOGY LAB 310	1,061SF/50SF=22 (25)
	9,206SF 247

BUSINESS (17,303SF-9,206SF) 8,097SF/100SF=81
TOTAL (247+81) = 328 PEOPLE

* NUMBERS BASED ON TEACHER + LAB FURNITURE SEATING CAPACITY.



C.C.C. CAMPUS PLAN
 N.T.S.
 PROJECT NORTH



HOLLAND HAMRICK & PATTERSON ARCHITECTS, P.A.
 222 NORTH LAFAYETTE ST., SUITE 21
 SHELBY, NORTH CAROLINA 28150
 hparch@bellsouth.net
 (704) 497-8578
 fax (704) 497-8578
AIA

ALLIED HEALTH BUILDING for CLEVELAND COMMUNITY COLLEGE
 SHELBY, NORTH CAROLINA

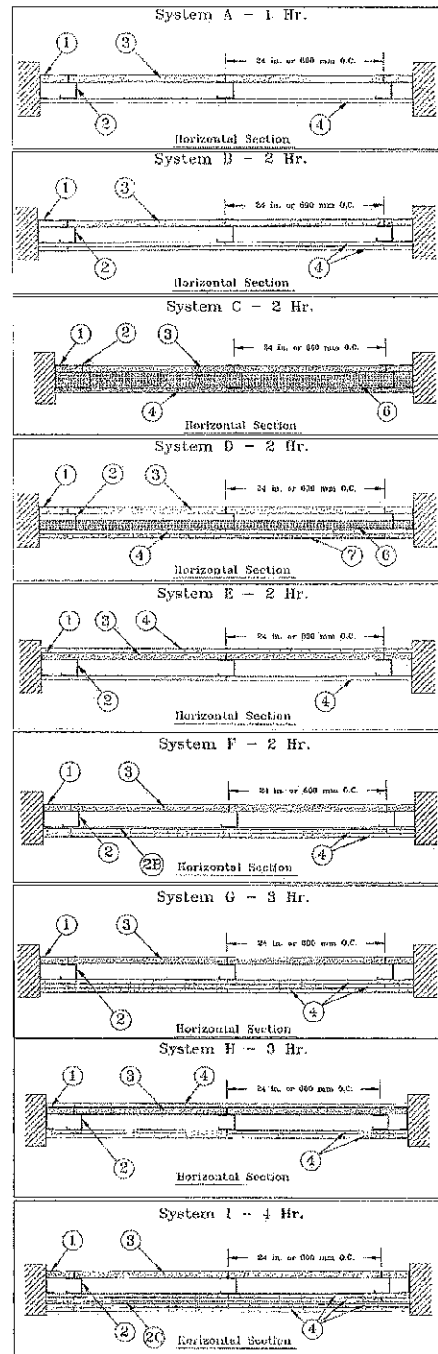
PROJECT NO.	2057
DATE	06-09-06
REVISION	
SHEET	
LS1.1	2 OF 40

Design No. U415
October 02, 2005
Nonbearing Wall Ratings - 1, 2, 3 or 4 Hr.

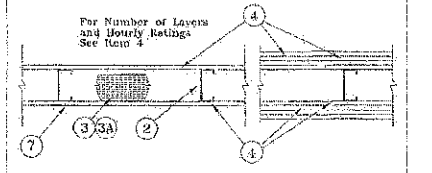
CANADIAN GYPSUM COMPANY - Type SLX
UNITED STATES GYPSUM CO - Type SLX
USG MEXICO S A DE CV - Type SLX
4. Gypsum Board

Design No. U419
October 27, 2005
Nonbearing Wall Ratings - 1, 2, 3 or 4 Hr (See Items 3 & 4)

Design No. U905
March 17, 2004
Bearing Wall Rating - 2 HR
Nonbearing Wall Rating - 2 HR



System A - 1 Hr.
Horizontal Section
System B - 2 Hr.
Horizontal Section
System C - 2 Hr.
Horizontal Section
System D - 2 Hr.
Horizontal Section
System E - 2 Hr.
Horizontal Section
System F - 2 Hr.
Horizontal Section
System G - 3 Hr.
Horizontal Section
System H - 3 Hr.
Horizontal Section
System I - 4 Hr.
Horizontal Section



1. Floor and Ceiling Runners - (Not shown) - Channel shaped, fabricated from min 25 MSG corrosion-protected steel, min width to accommodate stud size, with min 1 in. long legs attached to floor and ceiling with (minimum 2) in. OC max.
2. Steel Studs - Channel shaped, fabricated from min 25 MSG corrosion-protected steel, min width as indicated under Item 4, min 1-1/4 in. flange and 1/4 in. return, spaced a max of 24 in. OC. Studs to be cut 3/4 in. less than assembly height.
3. Batts and Blankets* - (Optional) - Placed in stud cavity, any glass fiber or mineral wool insulation bearing the UL Classification Marking as to Surface Burning Characteristics and/or Fire Resistance. See Batts and Blankets (BKNV or BZJZ) Categories for names of Classified companies.
4. Gypsum Board* - Gypsum panels with beveled, square or tapered edges, applied vertically or horizontally. Vertical joints centered over studs and staggered one stud cavity on opposite side of studs. Vertical joints in adjacent layers (qualifier system) staggered one stud cavity. Horizontal joints need not be backed by steel framing. Horizontal edge joints and horizontal butt joints on opposite sides of studs need not be staggered. Horizontal edge joints and horizontal butt joints in adjacent layers (multi-layer system) staggered a min of 12 in. The thickness and number of layers for the 1 hr, 2 hr, 3 hr and 4 hr ratings are as follows:

Rating	Min Stud Depth	No. of Layers of Board	Min. Thickness of Board (in.)
1	3-1/2	1 layer, 5/8 in. thick	Optional
1	2-1/2	1 layer, 1/2 in. thick	1-1/2 in.
1	1-5/8	1 layer, 5/8 in. thick	Optional
2	1-5/8	2 layers, 1/2 in. thick	Optional
2	1-5/8	2 layers, 5/8 in. thick	Optional
3	1-1/2	3 layers, 1/2 in. thick	Optional
3	1-5/8	2 layers, 3/4 in. thick	Optional
3	1-5/8	3 layers, 5/8 in. thick	Optional
4	1-5/8	4 layers, 5/8 in. thick	Optional
4	1-5/8	4 layers, 1/2 in. thick	Optional
4	2-1/2	2 layers, 3/4 in. thick	2 in.

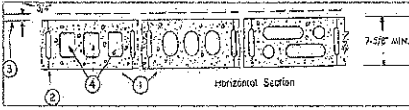
CANADIAN GYPSUM COMPANY - 1/2 in. thick Type C, IP-X2, IPC-AR or WRC; 5/8 in. thick Type AR, C, IP-AR, IP-X1, IP-X2, IPC-AR, SCX, SHX, WRC or WRC; 3/4 in. thick Type IP-X3 or ULTRACODE
UNITED STATES GYPSUM CO - 1/2 in. thick Type C, IP-X2, IPC-AR or WRC; 5/8 in. thick Type AR, C, IP-AR, IP-X1, IP-X2, IPC-AR, SCX, SHX, WRC or WRC; 3/4 in. thick Type IP-X3 or ULTRACODE
USG MEXICO S A DE CV - 1/2 in. thick Type C, IP-X2, IPC-AR or WRC; 5/8 in. thick Type AR, C, IP-AR, IP-X1, IP-X2, IPC-AR, SCX, SHX, WRC or WRC

CANADIAN GYPSUM COMPANY - 1/2 in. thick Type C, IP-X2, IPC-AR or WRC; 5/8 in. thick Type AR, C, IP-AR, IP-X1, IP-X2, IPC-AR, SCX, SHX, WRC or WRC; 3/4 in. thick Type IP-X3 or ULTRACODE
UNITED STATES GYPSUM CO - 1/2 in. thick Type C, IP-X2, IPC-AR or WRC; 5/8 in. thick Type AR, C, IP-AR, IP-X1, IP-X2, IPC-AR, SCX, SHX, WRC or WRC; 3/4 in. thick Type IP-X3 or ULTRACODE
USG MEXICO S A DE CV - 1/2 in. thick Type C, IP-X2, IPC-AR or WRC; 5/8 in. thick Type AR, C, IP-AR, IP-X1, IP-X2, IPC-AR, SCX, SHX, WRC or WRC

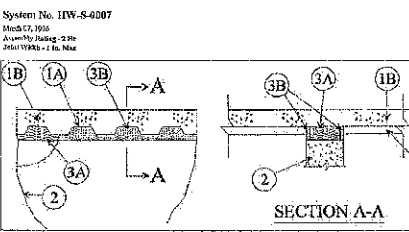
CANADIAN GYPSUM COMPANY - 1/2 in. thick Type C, IP-X2, IPC-AR or WRC; 5/8 in. thick Type AR, C, IP-AR, IP-X1, IP-X2, IPC-AR, SCX, SHX, WRC or WRC; 3/4 in. thick Type IP-X3 or ULTRACODE
UNITED STATES GYPSUM CO - 1/2 in. thick Type C, IP-X2, IPC-AR or WRC; 5/8 in. thick Type AR, C, IP-AR, IP-X1, IP-X2, IPC-AR, SCX, SHX, WRC or WRC; 3/4 in. thick Type IP-X3 or ULTRACODE
USG MEXICO S A DE CV - 1/2 in. thick Type C, IP-X2, IPC-AR or WRC; 5/8 in. thick Type AR, C, IP-AR, IP-X1, IP-X2, IPC-AR, SCX, SHX, WRC or WRC

CANADIAN GYPSUM COMPANY - 1/2 in. thick Type C, IP-X2, IPC-AR or WRC; 5/8 in. thick Type AR, C, IP-AR, IP-X1, IP-X2, IPC-AR, SCX, SHX, WRC or WRC; 3/4 in. thick Type IP-X3 or ULTRACODE
UNITED STATES GYPSUM CO - 1/2 in. thick Type C, IP-X2, IPC-AR or WRC; 5/8 in. thick Type AR, C, IP-AR, IP-X1, IP-X2, IPC-AR, SCX, SHX, WRC or WRC; 3/4 in. thick Type IP-X3 or ULTRACODE
USG MEXICO S A DE CV - 1/2 in. thick Type C, IP-X2, IPC-AR or WRC; 5/8 in. thick Type AR, C, IP-AR, IP-X1, IP-X2, IPC-AR, SCX, SHX, WRC or WRC

CANADIAN GYPSUM COMPANY - 1/2 in. thick Type C, IP-X2, IPC-AR or WRC; 5/8 in. thick Type AR, C, IP-AR, IP-X1, IP-X2, IPC-AR, SCX, SHX, WRC or WRC; 3/4 in. thick Type IP-X3 or ULTRACODE
UNITED STATES GYPSUM CO - 1/2 in. thick Type C, IP-X2, IPC-AR or WRC; 5/8 in. thick Type AR, C, IP-AR, IP-X1, IP-X2, IPC-AR, SCX, SHX, WRC or WRC; 3/4 in. thick Type IP-X3 or ULTRACODE
USG MEXICO S A DE CV - 1/2 in. thick Type C, IP-X2, IPC-AR or WRC; 5/8 in. thick Type AR, C, IP-AR, IP-X1, IP-X2, IPC-AR, SCX, SHX, WRC or WRC



1. Concrete Blocks* - Various designs. Classification D-2 (G) for concrete blocks category for list of eligible manufacturers.
2. Mortar - Blocks laid in full bed of mortar, min. 3/8 in. thick, of not less than 2-1/4 and not more than 3-1/2 parts of clean sharp sand to 1 part of portland cement (proportioned by volume) and not more than 50 percent hydrated lime (by cement volume). Vertical joints staggered.
3. Portland Cement Stucco or Gypsum Plaster - Add 1/2 in. to classification if used. Where combination members are framed in wall, plaster or stucco must be applied on the face opposite framing to achieve a max. Classification of 1-1/2 hr. Attached to concrete blocks (Item 1).
4. Loose Masonry Fill - If all core space is filled with loose dry expanded clay, expanded clay or shale (Frosty Kilm Process), water repellent vermiculite masonry fill insulation, or silicate sand and perlite loose fill insulation add 2 hr. to classification.
5. Foamed Plastic* - (Optional-Not Shown) - 1-1/2 in. thick max. 4 ft wide sheathing applied to concrete blocks (Item 1).
THE HOW CHEMICAL CO - Type Thermo
*Bearing the UL Classification Mark



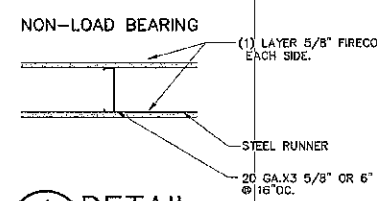
1. Floor Assembly - The fire-rated fluted steel deck/concrete floor assembly shall be constructed of the materials and in the manner described in the individual Floor-Ceiling Design in the UL Fire Resistance Directory and shall include the following construction features:
A. Steel Floor and Form Unit* - Composite or noncomposite max 3 in. deep min 22 psf galv or hot-dipped galv units. Adjacent unit borders/punched or welded together max 36 in. OC along side joints.
B. Normal Weight or Light Weight Concrete - Min 3 in. thick concrete of the type, density, and compressive strength detailed for the specific Floor-Ceiling Design described in the UL Fire Resistance Directory.
2. Wall Assembly - Min 5-1/2 in. thick mineral lightweight or normal weight (100-150 pcf) structural concrete. Wall may also be constructed of any UL Classified Concrete Blocks*.
See Concrete Blocks (CAZT) category in the Fire Resistance Directory for names of manufacturers.
3. Joint System - Max separation between bottom of floor and top of wall is 1 in. The joint system consists of a forming material and a fill material in the flats of the steel floor units and between the top of the wall and bottom of the steel floor units, as follows:
A. Packing Material - Min 4-1/2 in. thickness of min 4.0 pcf mineral wool batt insulation firmly packed into flats of the steel floor units and between the top of the wall and bottom of the steel floor units as a permanent joint. Packing material to be secured from each surface of wall to accommodate the required thickness of fill material.
B. Fill, Void or Cavity Material* - Min 1/2 in. thickness of fill material installed on each side of the wall in the flats of the steel floor units and between the top of the wall and the bottom of the steel floor units, flush with each surface of wall.
3M COMPANY - FB-2000 or FB-2000H
*Bearing the UL Classification Mark

4. Gypsum Board* - (As an alternate to Item 4) - 5/8 in. thick, 2 1/2 wide, tongue and groove edge, applied horizontally as the outer layer on one side of the assembly. Secured as described in Item 5. Joint covering (Item 7) not required.
CANADIAN GYPSUM COMPANY - Type SLX
UNITED STATES GYPSUM CO - Type SLX
USG MEXICO S A DE CV - Type SLX
5. Fasteners - (Not shown) - Type S or S-12 steel screws used to attach panels to studs (Item 2) or lining channels (Item 6). Single layer system: 1 in. long for 1/2 and 5/8 in. thick panels or 1-1/4 in. long for 3/4 in. thick panels, spaced 16 in. OC. Second layer: 1-5/8 in. long for 1/2 in. thick panels or 2-1/4 in. long for 3/4 in. thick panels, spaced 16 in. OC with screws offset 8 in. from first layer. Three-layer system: First layer: 1 in. long for 1/2 in. thick panels, spaced 24 in. OC. Second layer: 1-5/8 in. long for 1/2 in. thick panels, spaced 24 in. OC. Third layer: 2-1/4 in. long for 1/2 in. thick panels or 2-5/8 in. long for 3/4 in. thick panels, spaced 12 in. OC. Screws offset min 5 in. from layer below. Four-layer system: First layer: 1 in. long for 1/2 in. thick panels, spaced 24 in. OC. Second layer: 1-5/8 in. long for 1/2 in. thick panels, spaced 24 in. OC. Third layer: 2-1/4 in. long for 1/2 in. thick panels or 2-5/8 in. long for 3/4 in. thick panels, spaced 24 in. OC. Fourth layer: 2-5/8 in. long for 1/2 in. thick panels or 3 in. long for 3/4 in. thick panels, spaced 12 in. OC. Screws offset min 5 in. from layer below.
6. Furring Channels - (Optional, Not Shown) - For single or double layer systems - Resistant furring channels fabricated from min 25 MSG corrosion-protected steel, spaced vertically a max of 24 in. OC. Flange perforated in each intermediate and with 1/2 in. long Type S-12 steel screws. Not for use with Item 4A.
6A. Steel Framing Members (Not Shown)* - (Optional on one or both sides, not shown, for single or double layer systems) - As an alternate to Item 6, furring channels and Steel Framing Members as described below:
a. Furring Channels - Formed of No. 25 MSG galv steel, 2-3/8 in. wide by 7/8 in. deep, spaced max 24 in. OC perpendicular to studs. Channels secured to studs as described in Item 6. Gypsum board attached to furring channels as described in Item 5. Not for use with Item 4A.
b. Steel Framing Members* - Used to attach furring channels (Item 6A) to studs (Item 2). Clips spaced max 48 in. OC, and secured to studs with No. 8 x 1-1/2 in. minimum self-drilling, S-12 steel screw through the center grommet. Furring channels are fixed 2nd into clips.
6B. Steel Framing Members (Optional, Not Shown)* - As an alternate to Item 6, furring channels and Steel Framing Members on early one side of studs as described below:
a. Furring Channels - Formed of No. 25 MSG galv steel, spaced 24 in. OC perpendicular to studs. Channels secured to studs as described in Item 6. Batts and Blankets placed in stud cavity as described in Item 4. Two layers of gypsum board attached to furring channels as described in Item 4. Not for use with Item 4A.
b. Steel Framing Members* - Used to attach furring channels (Item 6B) to one side of studs (Item 2) only. Clips spaced 48 in. OC, and secured to studs with two No. 8 x 2-1/2 in. coarse drywall screws, one through the hole at each end of the clip. Furring channels are fixed 1st into clips.
KINCHIK COMPANY (LAFITEL, INC.) - Type Isovent
7. Joint Type and Compound - Vinyl or caulk, dry or preformed joint compound applied in two coats to joints and screw heads of outer layers. Paper tape, min 2 in. wide, embedded in first layer of compound over all joints of outer layer panels. Paper tape and joint compound may be omitted when gypsum panels are applied with a true edge.
8. Siding, Bricks or Stucco - (Optional, Not Shown) - Aluminum, vinyl or steel siding, brick veneer or stucco, meeting the requirements of local code agencies, installed over gypsum panels. Brick veneer attached to studs with corrugated metal flat attached to each stud with steel screws, at 16 in. min. then used each course of brick.
9. Caulking and Sealants* - (Optional, Not Shown) - A bead of neoprene sealant applied around the perimeter for second coat.
UNITED STATES GYPSUM CO - Type AS
*Bearing the UL Classification Mark

1. Floor Assembly - The fire-rated fluted steel deck/concrete floor assembly shall be constructed of the materials and in the manner described in the individual Floor-Ceiling Design in the UL Fire Resistance Directory and shall include the following construction features:
A. Steel Floor and Form Unit* - Composite or noncomposite max 3 in. deep min 22 psf galv or hot-dipped galv units. Adjacent unit borders/punched or welded together max 36 in. OC along side joints.
B. Normal Weight or Light Weight Concrete - Min 3 in. thick concrete of the type, density, and compressive strength detailed for the specific Floor-Ceiling Design described in the UL Fire Resistance Directory.
2. Wall Assembly - Min 5-1/2 in. thick mineral lightweight or normal weight (100-150 pcf) structural concrete. Wall may also be constructed of any UL Classified Concrete Blocks*.
See Concrete Blocks (CAZT) category in the Fire Resistance Directory for names of manufacturers.
3. Joint System - Max separation between bottom of floor and top of wall is 1 in. The joint system consists of a forming material and a fill material in the flats of the steel floor units and between the top of the wall and bottom of the steel floor units, as follows:
A. Packing Material - Min 4-1/2 in. thickness of min 4.0 pcf mineral wool batt insulation firmly packed into flats of the steel floor units and between the top of the wall and bottom of the steel floor units as a permanent joint. Packing material to be secured from each surface of wall to accommodate the required thickness of fill material.
B. Fill, Void or Cavity Material* - Min 1/2 in. thickness of fill material installed on each side of the wall in the flats of the steel floor units and between the top of the wall and the bottom of the steel floor units, flush with each surface of wall.
3M COMPANY - FB-2000 or FB-2000H
*Bearing the UL Classification Mark

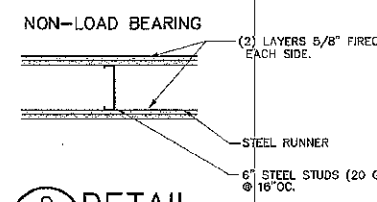
4. Gypsum Board* - (As an alternate to Item 4) - 5/8 in. thick, 2 1/2 wide, tongue and groove edge, applied horizontally as the outer layer on one side of the assembly. Secured as described in Item 5. Joint covering (Item 7) not required.
CANADIAN GYPSUM COMPANY - Type SLX
UNITED STATES GYPSUM CO - Type SLX
USG MEXICO S A DE CV - Type SLX
5. Fasteners - (Not shown) - Type S or S-12 steel screws used to attach panels to studs (Item 2) or lining channels (Item 6). Single layer system: 1 in. long for 1/2 and 5/8 in. thick panels or 1-1/4 in. long for 3/4 in. thick panels, spaced 16 in. OC. Second layer: 1-5/8 in. long for 1/2 in. thick panels or 2-1/4 in. long for 3/4 in. thick panels, spaced 16 in. OC with screws offset 8 in. from first layer. Three-layer system: First layer: 1 in. long for 1/2 in. thick panels, spaced 24 in. OC. Second layer: 1-5/8 in. long for 1/2 in. thick panels, spaced 24 in. OC. Third layer: 2-1/4 in. long for 1/2 in. thick panels or 2-5/8 in. long for 3/4 in. thick panels, spaced 12 in. OC. Screws offset min 5 in. from layer below. Four-layer system: First layer: 1 in. long for 1/2 in. thick panels, spaced 24 in. OC. Second layer: 1-5/8 in. long for 1/2 in. thick panels, spaced 24 in. OC. Third layer: 2-1/4 in. long for 1/2 in. thick panels or 2-5/8 in. long for 3/4 in. thick panels, spaced 24 in. OC. Fourth layer: 2-5/8 in. long for 1/2 in. thick panels or 3 in. long for 3/4 in. thick panels, spaced 12 in. OC. Screws offset min 5 in. from layer below.
6. Furring Channels - (Optional, Not Shown) - For single or double layer systems - Resistant furring channels fabricated from min 25 MSG corrosion-protected steel, spaced vertically a max of 24 in. OC. Flange perforated in each intermediate and with 1/2 in. long Type S-12 steel screws. Not for use with Item 4A.
6A. Steel Framing Members (Not Shown)* - (Optional on one or both sides, not shown, for single or double layer systems) - As an alternate to Item 6, furring channels and Steel Framing Members as described below:
a. Furring Channels - Formed of No. 25 MSG galv steel, 2-3/8 in. wide by 7/8 in. deep, spaced max 24 in. OC perpendicular to studs. Channels secured to studs as described in Item 6. Gypsum board attached to furring channels as described in Item 5. Not for use with Item 4A.
b. Steel Framing Members* - Used to attach furring channels (Item 6A) to studs (Item 2). Clips spaced max 48 in. OC, and secured to studs with No. 8 x 1-1/2 in. minimum self-drilling, S-12 steel screw through the center grommet. Furring channels are fixed 2nd into clips.
6B. Steel Framing Members (Optional, Not Shown)* - As an alternate to Item 6, furring channels and Steel Framing Members on early one side of studs as described below:
a. Furring Channels - Formed of No. 25 MSG galv steel, spaced 24 in. OC perpendicular to studs. Channels secured to studs as described in Item 6. Batts and Blankets placed in stud cavity as described in Item 4. Two layers of gypsum board attached to furring channels as described in Item 4. Not for use with Item 4A.
b. Steel Framing Members* - Used to attach furring channels (Item 6B) to one side of studs (Item 2) only. Clips spaced 48 in. OC, and secured to studs with two No. 8 x 2-1/2 in. coarse drywall screws, one through the hole at each end of the clip. Furring channels are fixed 1st into clips.
KINCHIK COMPANY (LAFITEL, INC.) - Type Isovent
7. Joint Type and Compound - Vinyl or caulk, dry or preformed joint compound applied in two coats to joints and screw heads of outer layers. Paper tape, min 2 in. wide, embedded in first layer of compound over all joints of outer layer panels. Paper tape and joint compound may be omitted when gypsum panels are applied with a true edge.
8. Siding, Bricks or Stucco - (Optional, Not Shown) - Aluminum, vinyl or steel siding, brick veneer or stucco, meeting the requirements of local code agencies, installed over gypsum panels. Brick veneer attached to studs with corrugated metal flat attached to each stud with steel screws, at 16 in. min. then used each course of brick.
9. Caulking and Sealants* - (Optional, Not Shown) - A bead of neoprene sealant applied around the perimeter for second coat.
UNITED STATES GYPSUM CO - Type AS
*Bearing the UL Classification Mark

NOTE: DEEP LEG TRACK WITH SLIP CONNECTION REQUIRED @ TOP OF ALL INTERIOR NON-LOAD BEARING METAL STUD PARTITIONS WHICH EXTEND TO BOTTOM OF STRUCTURE.

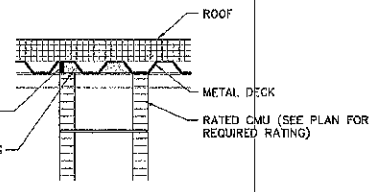


1 HR. STL. STUD PARTITION
SEE UL # U419 THIS SHEET.

NOTE: DEEP LEG TRACK WITH SLIP CONNECTION REQUIRED @ TOP OF ALL INTERIOR NON-LOAD BEARING METAL STUD PARTITIONS WHICH EXTEND TO BOTTOM OF STRUCTURE.



2 HR. STL. STUD PARTITION
SEE UL # U419 THIS SHEET.



1/2\"/>

TYP. TOP OF RATED CMU WALL-1 HR.
SIMILAR TO UL DESIGN IJW-S-0037 THIS SHEET.

1. Floor, Side and Ceiling Runners - "U" shaped runner, min 2-1/2 in. deep (min 4 in. deep when System C is used), with unequal legs of 1 in. and 2 in., fabricated from min 24 MSG (min 20 MSG when Item 4A or 7 is used) galv steel. Runners positioned with short leg toward finished side of wall. Runners attached to structural supports with steel brackets located not greater than 2 in. from ends and not greater than 24 in. OC. "T" shaped studs (Item 2A) may be used as side runners in place of "U" shaped runners.
2. Steel Studs - "C" shaped studs, min 2-1/2 in. deep (min 4 in. deep when System C is used), fabricated from min 25 MSG (min 20 MSG when Item 7 is used) galv steel. Cut to lengths 3/8 to 1/2 in. less than floor-to-ceiling height and spaced 24 in. or 600 mm OC.
2A. Steel Studs - (Not Shown) - "T" shaped studs installed back to back in place of "C" shaped studs (Item 2). "T" shaped studs secured together with steel screws spaced a maximum 12 in. OC. Fabricated from min 25 MSG (min 20 MSG when Item 7 is used) galv steel, min 2-1/2 in. deep (min 4 in. deep when System C is used), with one leg 1 in. long and two legs 3/4 in. long. Shorter legs 1 in. apart to engage gypsum floor batts.
2B. Furring Channels - (Optional, Not Shown) - For use with single or double layer systems. Resistant furring channels fabricated from min 25 MSG corrosion-protected steel, installed horizontally, and spaced vertically a max. 24 in. OC. Flange portion of channel attached to each intermediate "C" shaped stud on side of stud opposite the 1 in. inner panels with 1/2 in. long Type S or S-12 self-drilling, self-tapping, bugle-head steel screws. Vertical edges installed vertically only. Not to be used with Type FRX or FRX-G gypsum wallboard (Item 4A) or cementitious backer units (Item 7).
3. Furring Channels - For use with System 1. "H" shaped, 25 MSG galv steel furring channels attached directly over the inner layer of wallboard to each stud with 2 in. long Type S pan head steel screws. Screws alternate from top flange to bottom flange at each stud intersection. Furring channels spaced vertically max 24 in. OC.
3. Gypsum Board* - Gypsum floor panels, min 1 in. thick, 24 in. or 600 mm (for metric spacing) wide. Panels cut 1 in. less in length than floor to ceiling height. Vertical edges installed in "H" portion of "C" shaped studs or the gap between the two 3/4 in. legs of the "T" studs. Free edge of end panels attached to long leg of vertical "U" runners with 1-5/8 in. long Type S steel screws spaced not greater than 12 in. OC. When wall height exceeds floor panel height, floor panel may be backed to extend to the full height of the wall. Horizontal joints need not be backed by steel framing. In System 1, butt joints in floor panels are staggered min 36 in. Butt joints backed with 6 in. by 22 lbs. strips of 3/4 in. thick gypsum wallboard (Item 4). Wallboard strips centered over butt joints and secured to inner panels with six 1-1/2 in. long Type G steel screws, three screws along the 22 in. dimension at the top and bottom of the strips.

CANADIAN GYPSUM COMPANY - 1/2 in. thick Type C, IP-X2, IPC-AR or WRC; 5/8 in. thick Type AR, C, IP-AR, IP-X1, IP-X2, IPC-AR, SCX, SHX, WRC or WRC; 3/4 in. thick Type IP-X3 or ULTRACODE
UNITED STATES GYPSUM CO - 1/2 in. thick Type C, IP-X2, IPC-AR or WRC; 5/8 in. thick Type AR, C, IP-AR, IP-X1, IP-X2, IPC-AR, SCX, SHX, WRC or WRC; 3/4 in. thick Type IP-X3 or ULTRACODE
USG MEXICO S A DE CV - 1/2 in. thick Type C, IP-X2, IPC-AR or WRC; 5/8 in. thick Type AR, C, IP-AR, IP-X1, IP-X2, IPC-AR, SCX, SHX, WRC or WRC

CANADIAN GYPSUM COMPANY - 1/2 in. thick Type C, IP-X2, IPC-AR or WRC; 5/8 in. thick Type AR, C, IP-AR, IP-X1, IP-X2, IPC-AR, SCX, SHX, WRC or WRC; 3/4 in. thick Type IP-X3 or ULTRACODE
UNITED STATES GYPSUM CO - 1/2 in. thick Type C, IP-X2, IPC-AR or WRC; 5/8 in. thick Type AR, C, IP-AR, IP-X1, IP-X2, IPC-AR, SCX, SHX, WRC or WRC; 3/4 in. thick Type IP-X3 or ULTRACODE
USG MEXICO S A DE CV - 1/2 in. thick Type C, IP-X2, IPC-AR or WRC; 5/8 in. thick Type AR, C, IP-AR, IP-X1, IP-X2, IPC-AR, SCX, SHX, WRC or WRC

CANADIAN GYPSUM COMPANY - 1/2 in. thick Type C, IP-X2, IPC-AR or WRC; 5/8 in. thick Type AR, C, IP-AR, IP-X1, IP-X2, IPC-AR, SCX, SHX, WRC or WRC; 3/4 in. thick Type IP-X3 or ULTRACODE
UNITED STATES GYPSUM CO - 1/2 in. thick Type C, IP-X2, IPC-AR or WRC; 5/8 in. thick Type AR, C, IP-AR, IP-X1, IP-X2, IPC-AR, SCX, SHX, WRC or WRC; 3/4 in. thick Type IP-X3 or ULTRACODE
USG MEXICO S A DE CV - 1/2 in. thick Type C, IP-X2, IPC-AR or WRC; 5/8 in. thick Type AR, C, IP-AR, IP-X1, IP-X2, IPC-AR, SCX, SHX, WRC or WRC

EDTA PROJECT No. 04-01-05818
UL DESIGNS
DCO# 1287
SCO ID# 01-05615-DIA
4 OF 40

HOLLAND HAMRICK & PATTERSON ARCHITECTS, P.A.
222 NORTH LAFAYETTE ST., SUITE 21
SHELBY, NORTH CAROLINA 28150
tel: (704) 487-8578 fax: (704) 487-8579
hpa@hampat.com

ALLIED HEALTH BUILDING for CLEVELAND COMMUNITY COLLEGE
SHELBY, NORTH CAROLINA

PROJECT NO. 2057
DATE 06-09-05
REVISION SHEET

EPA PROJECT No. 04-01-05818
UL DESIGNS
DCO# 1287
SCO ID# 01-05615-DIA
4 OF 40