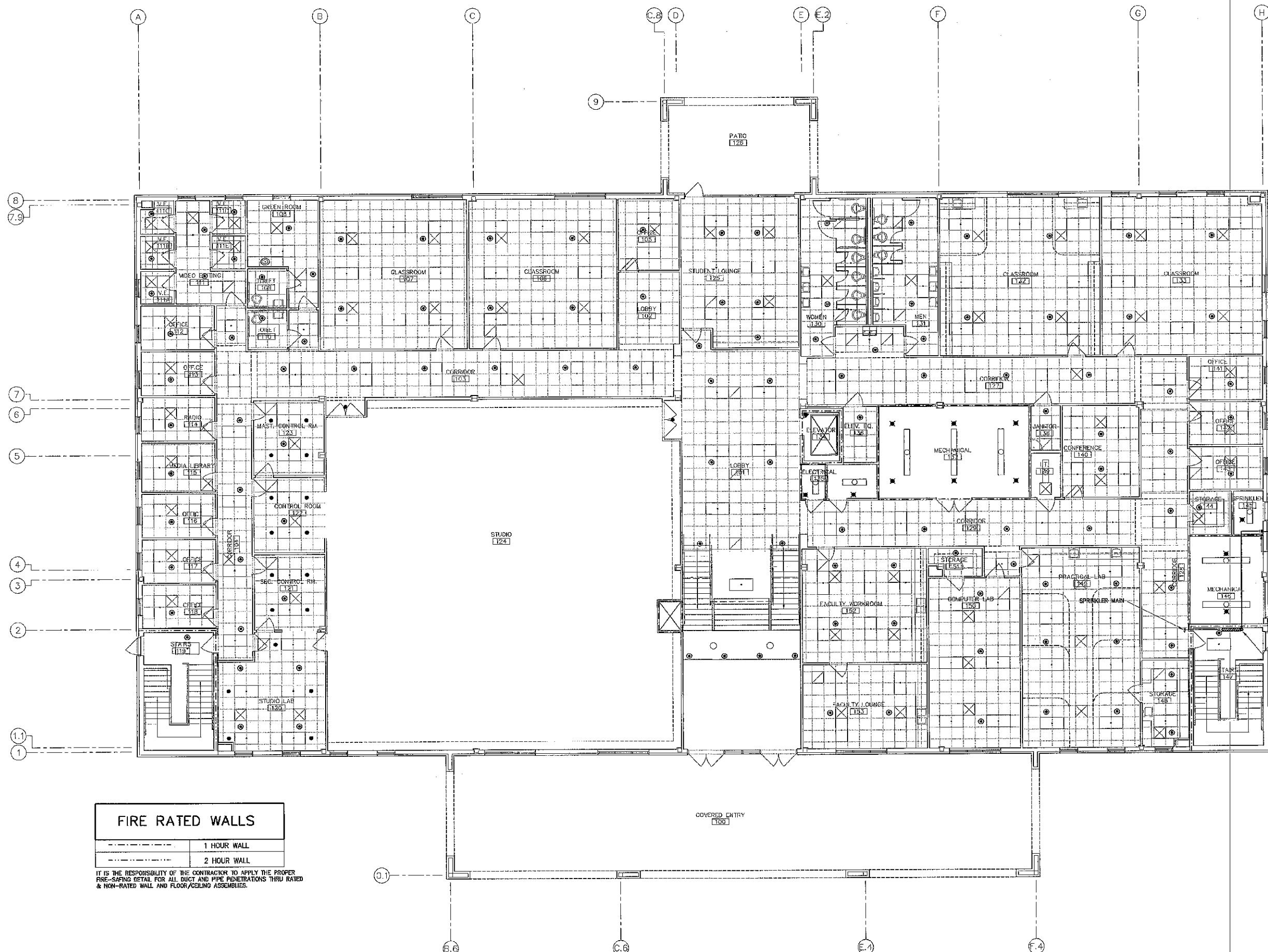
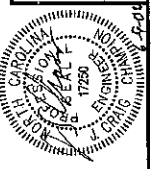


CONSULTANT  
 MCKNIGHT • SMITH • WARD • GRIFFIN  
 ENGINEERS, INCORPORATED  
 PO Box 240826 • 4223 South Boulevard  
 Charlotte, NC • 704/927-8112



FIRE RATED WALLS	
	1 HOUR WALL
	2 HOUR WALL

IT IS THE RESPONSIBILITY OF THE CONTRACTOR TO APPLY THE PROPER FIRE-SAFING DETAIL FOR ALL DUCT AND PIPE PENETRATIONS THRU RATED & NON-RATED WALL AND FLOOR/CEILING ASSEMBLIES.

**1** FIRST FLOOR PLAN  
 FP1.1 1/8"=1'-0"

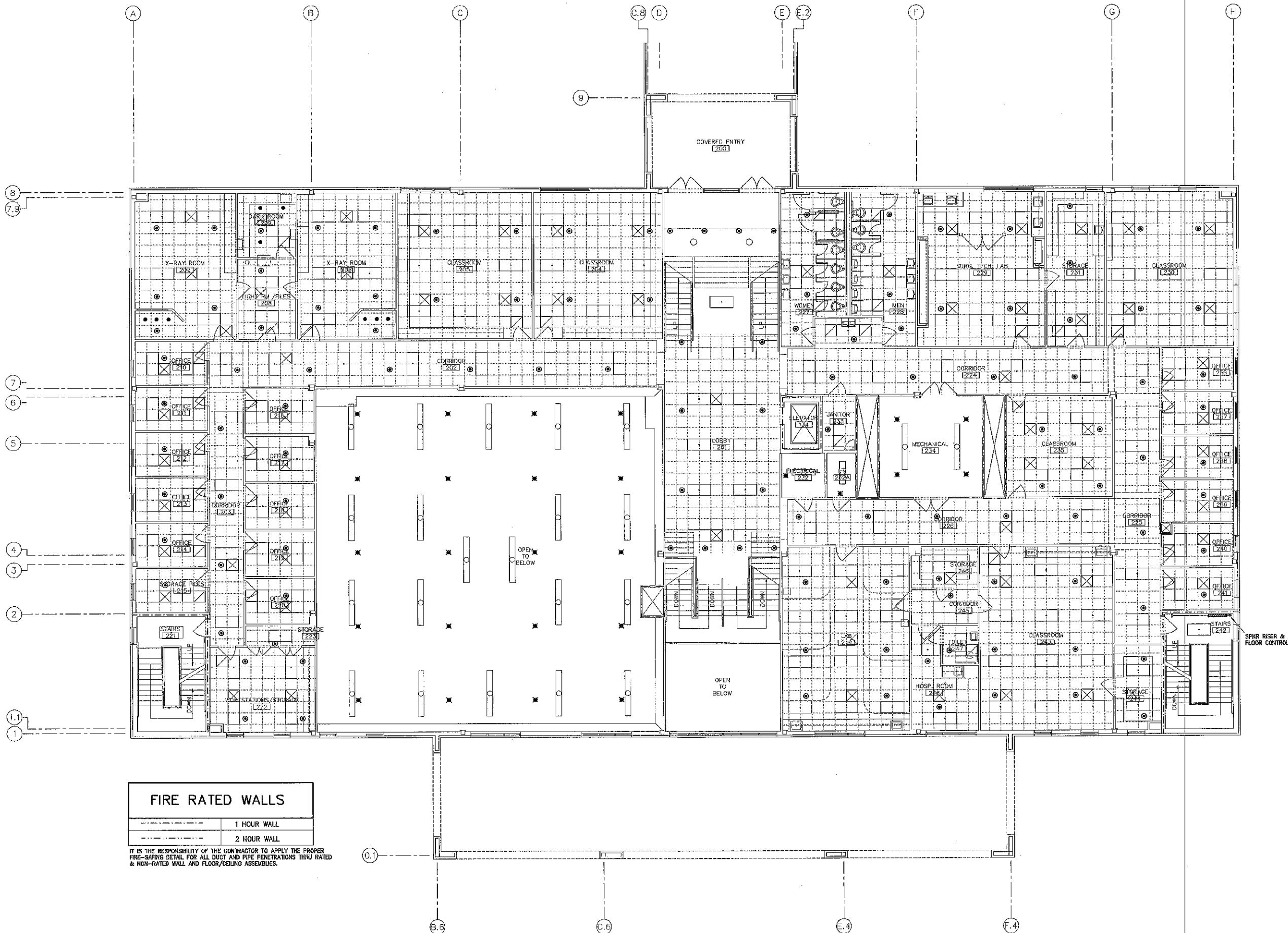
6" FIRE MAN BELOW GRADE SEE SHT. P3.1 FOR CONT.  
 SPRINKLER RISER SEE 1/FP1.4  
 SPRINKLER RISER & FLOOR CONTROL

HOLLAND HAMRICK & PATTERSON  
 ARCHITECTS, P.A.  
 282 NORTH LAVERGNE ST. SUITE 21  
 SHELBY, NORTH CAROLINA 28150  
 hmparc@bellsouth.net (704) 487-8578 fax (704) 487-8578  
**AIA**

PROJECT TITLE  
**ALLIED HEALTH BUILDING for CLEVELAND COMMUNITY COLLEGE**  
 SHELBY, NORTH CAROLINA

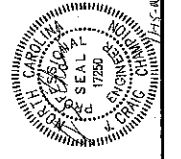
COMD. NO. 2087  
 DATE 06-08-06  
 REVISIONS  
 SHEET

**FP1.1**  
 1 OF 4



**1** SECOND FLOOR PLAN  
 FP1.2 1/8"=1'-0"

CONSULTANT  
**McKNIGHT • SMITH • WARD • GRIFFIN**  
 ENGINEERS, INCORPORATED  
 PO Box 240328 • 4223 South Boulevard  
 Charlotte, NC • 704/527-2112



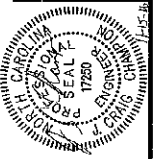
**HOLLAND HAMRICK & PATTERSON**  
 ARCHITECTS, P.A.  
 222 NORTH LAFAYETTE ST., SUITE 21  
 SHELBY, NORTH CAROLINA 28150  
 hhpareh@bellsouth.net (704) 487-8578  
 fax (704) 487-8579  
**AIA**

PROJECT FILE  
**ALLIED HEALTH BUILDING**  
 FOR  
**CLEVELAND COMMUNITY**  
 COLLEGE  
 SHELBY, NORTH CAROLINA

CONTRACT NO. 2037  
 DATE 06-09-06  
 REVISIONS  
 SHEET

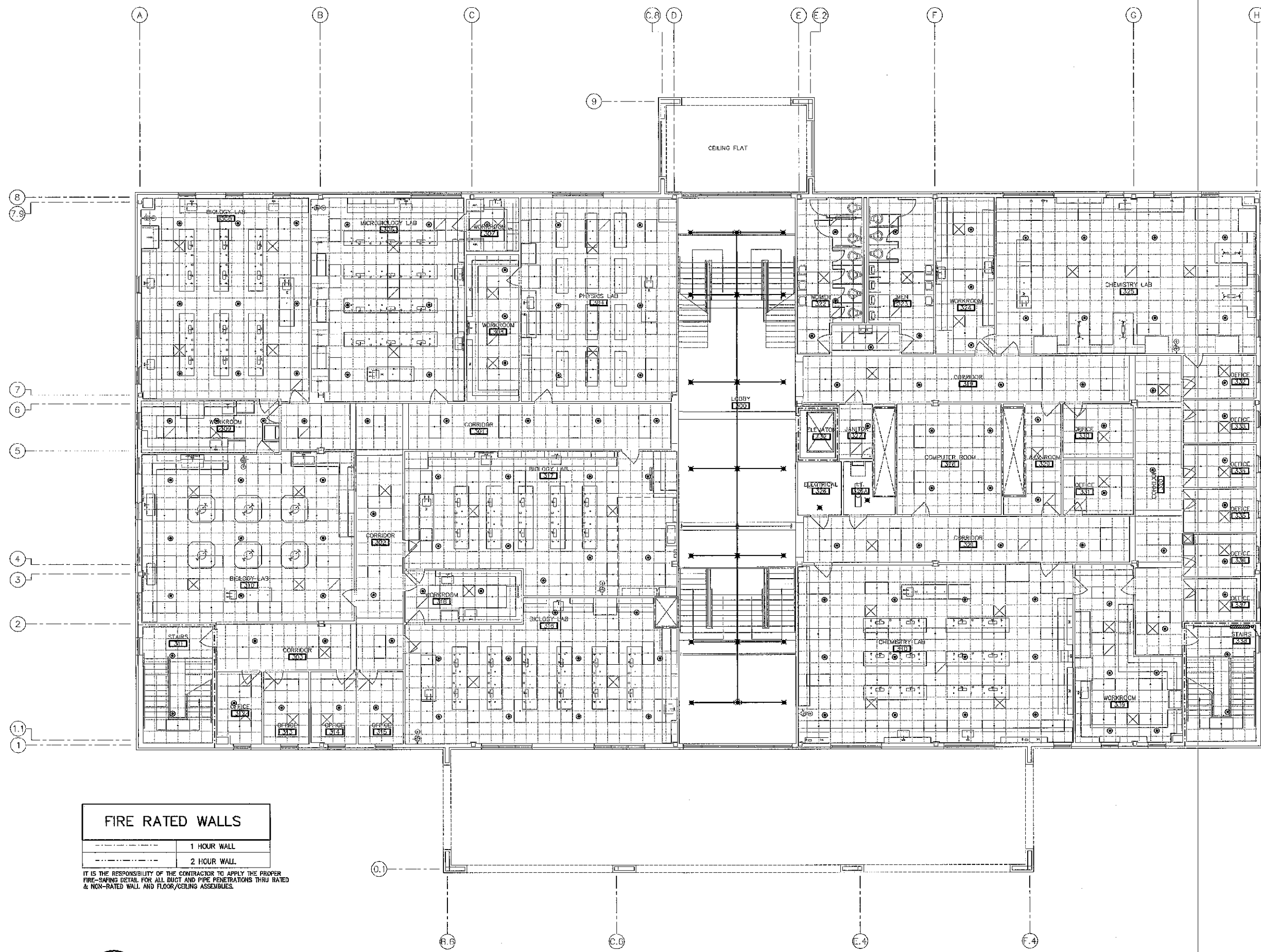
**FP1.2**  
 2 OF 4

CONSULTANT  
 MCKNIGHT • SMITH • WARD • GRIFFIN  
 ENGINEERS, INCORPORATED  
 PO Box 240828 • 4223 South Boulevard  
 Charlotte, NC • 704/527-2112



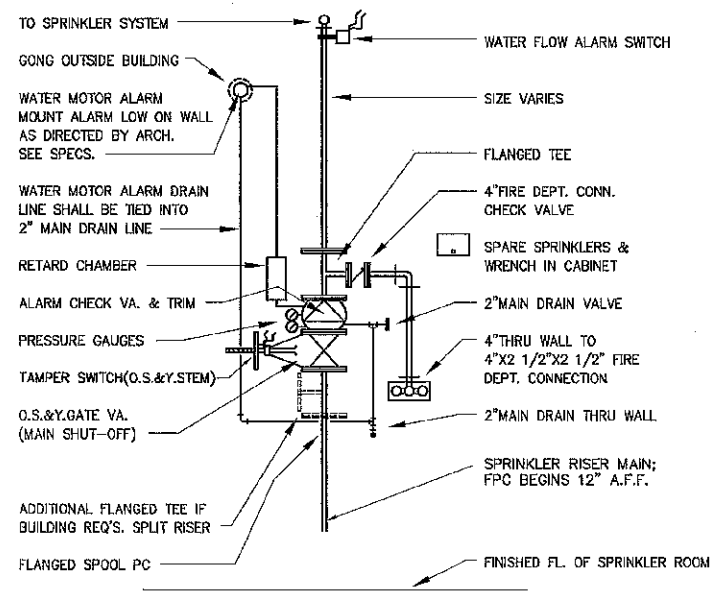
HOLLAND HAMRICK & PATTERSON  
 ARCHITECTS, P.A.  
 225 NORTH LANTANETTE ST. SUITE 21  
 SHELBY, NORTH CAROLINA 28150  
 hnpattern@bellsouth.net  
 (704) 487-8578  
 fax (704) 487-8578  
 AIA

PROJECT FILE  
 ALLIED HEALTH BUILDING  
 for  
 CLEVELAND COMMUNITY  
 COLLEGE  
 SHELBY, NORTH CAROLINA  
 PROJECT NO. 2037  
 DATE 06-09-06  
 SHEET  
 DCC# 1287  
 SCO ID# 01-05815-01A  
 3 OF 4  
 EDA PROJECT NO. 04-01-05818

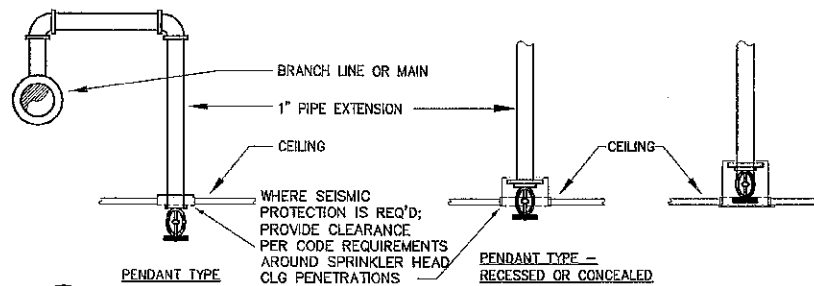


**1** THIRD FLOOR PLAN  
 FP1.3 1/8" = 1'-0"

SPKR RISER & FLOOR CONTROL

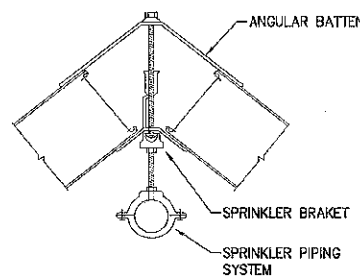


**1** SPRINKLER RISER DETAIL  
FP1.4 NTS

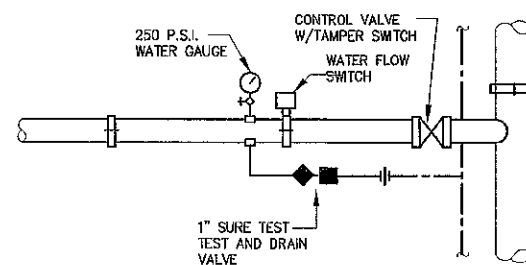


**2** TYPICAL DROP TO SPRINKLER HEAD  
FP1.4 NTS  
NOTE: SPRINKLER HEADS SHALL BE CENTERED IN CEILING TILE; COORDINATE WITH ARCHITECT.

ALL SPRINKLER LOADING INFORMATION MUST BE REVIEWED AND APPROVED BY SKYLIGHT MANUFACTURER PRIOR TO ANY ATTACHMENT.



**4** ATRIUM PIPE HANGING DETAIL  
FP1.4 NTS  
NOTE: ATTACHMENT TO BATTEN MUST NOT RESTRICT INSTALLATION SYSTEM EXPANSION AND CONTRACTION.

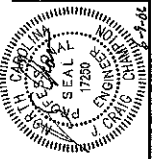


**3** FLOOR CONTROL ASSEMBLY  
FP1.4 NTS

**GENERAL NOTES & LEGEND**

1. THESE DRAWINGS ARE FOR THE PURPOSE OF ESTABLISHING CRITERIA AND SUGGESTING PIPE ROUTING SOLUTIONS. THEY ARE NOT TO BE TAKEN AS CONSTRUCTION DRAWINGS. SPRINKLER LAYOUT SHOWN IS FOR COORDINATION PURPOSES ONLY. AS A MINIMUM, FPC SHALL PROVIDE SPRINKLER LAYOUT FOR ALL SPACES IN ACCORDANCE WITH NFPA 13, ALL APPLICABLE STATE & LOCAL CODES. FPC SHALL ALSO CONFORM TO THE CRITERIA ESTABLISHED BY THESE DRAWINGS WHERE CODE MINIMUMS ARE EXCEEDED. COORDINATE WITH REFLECTED CEILING PLANS.
  2. ALL SPRINKLER HEADS SHALL BE LOCATED IN CENTER OF CEILING TILE UNLESS NOTED OTHERWISE.
  3. SEE ARCHITECTURAL FLOOR PLANS FOR LOCATION OF RATED PARTITIONS.
  4. COORDINATE ALL PIPING WITH P,M&E CONTRACTORS.
  5. THIS BLDG IS CLASSIFIED AS LIGHT HAZARD WITH A DENSITY OF 0.10 GPM & REMOTE AREA OF 1500 SQFT. STORAGE, MECHANICAL ROOMS SHALL BE OH-1.  
STATIC: 70 PSI (ELEV ~ 875)  
RESIDUAL: 48 PSI  
FLOW: 1340 GPM  
HYDRANT LOCATED ON EAST MARION ST (GATE 4 OF FAIRGROUNDS). SEE SHEET P.3.1 FOR SITE INFORMATION. FLOW TEST WAS PERFORMED ON 7-12-06 BY SHELBY FIRE DEPT.
  6. WORKING PLANS SHALL BE SUBMITTED FOR APPROVAL TO THE AUTHORITY HAVING JURISDICTION BEFORE ANY EQUIPMENT IS INSTALLED OR REMODELED. DEVIATION FROM APPROVED PLANS SHALL REQUIRE PERMISSION FROM THE A.H.
  7. IF FPC ELECTS TO PREFABRICATE PIPING, ANY CHANGES BECAUSE OF CONFLICTS TO ACCOMMODATE EXISTING OR NEW CONSTRUCTION CONDITIONS SHALL BE CORRECTED AT NO COST TO THE OWNER.
  8. FPC SHALL PROVIDE SEISMIC PROTECTION (INCL DETAILS) AS REQUIRED BY NFPA 13 AND ALL APPLICABLE STATE AND LOCAL CODES.
  9.
    - ⊙ - RECESSED PENDANT TYPE SPRINKLER HEAD WITH POLISHED CHROME FINISH
    - - CONCEALED PENDANT TYPE SPRINKLER HEAD WITH WHITE FINISH
    - ▶ - SIDEWALL TYPE SPRINKLER HEAD
    - ✕ - UPRIGHT TYPE SPRINKLER HEAD
    - ▷ - DRY SIDEWALL SPRINKLER HEAD
- [ ] (1) - NODE DESIGNATIONS FOR HYDRAULIC CALCULATIONS  
 FDC - FIRE DEPARTMENT CONNECTION

CONSULTANT  
McKNIGHT • SMITH • WARD • GRIFFIN  
ENGINEERS, INCORPORATED  
P.O. Box 240826 • 4223 South Boulevard  
Charlotte, NC • 704/527-2112



HOLLAND HAMRICK & PATTERSON  
ARCHITECTS, P.A.  
222 NORTH LAFAYETTE ST., SUITE 21  
SHELBY, NORTH CAROLINA 28150  
hhparch@bellsouth.net  
(704) 487-8578  
fax (704) 487-8579  
AIA

ALLIED HEALTH BUILDING  
for  
CLEVELAND COMMUNITY  
COLLEGE  
SHELBY, NORTH CAROLINA

PROJECT FILE  
CLEARING  
DATE 06-09-06  
REVISED

SHEET  
**FP1.4**  
4 OF 4