

13K LEGEND
SCALE: N.T.S.

- GENERAL AREA FOR PRIMARY DEMOLITION. MISCELLANEOUS DEMO SHALL EXTEND BEYOND THESE LIMITS.
- ASSEMBLIES TO BE REMOVED.
- WALL ASSEMBLIES TO REMAIN. REFER TO ARCH. PLANS FOR LIMITS.
- NEW ASSEMBLIES TO BE CONSTRUCTED - REFER TO ARCH. PLANS.

13K DEMO NOTES
SCALE: N.T.S.

- 1 REMOVE CONCRETE MASONRY WALL ASSEMBLY, INCLUDING BUT NOT LIMITED TO MASONRY, WALL TIES, REINFORCEMENT AND IMBEDS. REFER TO ARCHITECTURAL PLANS FOR ADDITIONAL LIMITS OF DEMOLITION.
- 2 REMOVE EXISTING FLOOR FINISH INCLUDING, BUT NOT LIMITED TO FLOORING BASE AND ADHESIVE FROM SUBSTRATE. REFER TO ARCHITECTURAL DRAWINGS FOR ADDITIONAL NOTES AND LIMITS.
- 3 REMOVE EXISTING CEILING ASSEMBLY, INCLUDING BUT NOT LIMITED TO CEILING PANELS, CEILING GRID, WALL ANGLE AND DEVICES SUSPENDED IN THE ASSEMBLY. REFER TO MD100 & PD100 & E603 DRAWINGS FOR ADDITIONAL NOTES.
- 4 REMOVE DOOR & FRAME ASSEMBLIES, INCLUDING BUT NOT LIMITED TO FRAME, DOOR, AND HARDWARE.
- 5 REMOVE LOUVER ASSEMBLY, INCLUDING BUT NOT LIMITED TO LOUVER, FRAME, AND FLASHING.
- 6 REMOVE FAN COIL UNIT ASSEMBLY, INCLUDING BUT NOT LIMITED TO FAN COIL UNIT, SUPPLY & RETURN PIPES, AND CONTROLS. REFER TO MECH. DWGS FOR ADDITIONAL NOTES.
- 7 EXIST. ELECTRICAL PANEL TO REMAIN AND OPERATIONAL DURING CONSTRUCTION.
- 8 REMOVE LAB. BASE CABINET ASSEMBLIES, INCLUDING BUT NOT LIMITED TO COUNTERTOPS, PLUMBING DEVICES, AND WATER, VACUUM AND GAS FITTINGS. REFER TO PLUMBING AND ELECTRICAL DWGS. RETURN CABINETS AND EQUIP. TO OWNER.
- 9 REMOVE WALL SHELF ASSEMBLIES.
- 10 REMOVE ALL EDUCATIONAL ACCESSORIES, INCLUDING BUT NOT LIMITED TO PULL-DOWN SCREEN, MARKER BOARDS, AND TACKBOARDS. RETURN DEVICES TO OWNER.
- 11 REMOVE GLAZING FROM OPENING.

- 13B GENERAL NOTES**
SCALE: N.T.S.
1. THE CONTRACTOR SHALL VERIFY EXISTING CONDITIONS AND NOTIFY THE ARCHITECT/ OR OWNERS REPRESENTATIVE OF ANY DISCREPANCIES IN WRITING PRIOR TO DEMOLITION.
 2. DEMOLITION TO BE DONE IN ACCORDANCE WITH IBC AND OTHER APPLICABLE CODES.
 3. THE CONTRACTOR SHALL DISCONNECT UTILITIES - I.E.: POWER, WATER, COMMUNICATIONS, FIRE ALARM, WITHIN THE LIMITS OF CONSTRUCTION PRIOR TO BEGINNING DEMOLITION.
 4. THE CONTRACTOR SHALL NOTIFY THE ARCHITECT/OWNER'S REPRESENTATIVE OF ANY UTILITY INTERRUPTIONS IMMEDIATELY.
 5. THE DEMOLITION CONTRACTOR WILL BE NOTIFIED IN WRITING BY A REPRESENTATIVE OF THE UNIVERSITY WHEN DEMOLITION MAY COMMENCE. THIS REQUIREMENT ALLOWS THE UNIVERSITY TO REMOVE ITEMS FOR SALVAGE PRIOR TO DEMOLITION.
 6. THE PURPOSE OF THESE DRAWINGS IS TO SHOW THE LIMITS OF DEMOLITION - THIS IS NOT A RECORD DOCUMENT OF EXISTING CONDITIONS, BUT A REPRESENTATION OF THE EXISTING SIZE AND SPACES.
 7. REFER TO ENGINEERING DRAWINGS FOR ADDITIONAL NOTES CONCERNING DEMOLITION OF PLUMBING, MECHANICAL, ELECTRICAL AND FIRE SUPPRESSION ASSEMBLIES.
 8. TIGHTNESS OF THE BUILDING SHALL NEVER BE COMPROMISED DURING CONSTRUCTION.
 9. THE CONTRACTOR SHALL SCHEDULE DEMOLITION SO DEBRIS SHALL BE REMOVED THROUGH THE NEW CONSTRUCTION.
 10. MISCELLANEOUS PATCHING IS REQUIRED & SHALL MATCH THE ADJACENT MATERIALS IN FINISH, MATERIAL, AND CONSTRUCTION.
 11. IN LOCATIONS WHERE ELECTRICAL OR PLUMBING DEVICES ARE REMOVED, COVER PLATES ARE TO BE INSTALLED. WHEREVER POSSIBLE COVER ABANDONED BOXES.
 12. AT THE END OF CONSTRUCTION, OPERABLE WINDOW BLINDS ARE TO BE CLEANED IN EACH ROOM WHERE CONSTRUCTION TOOK PLACE IN THE EXISTING BUILDING.
 13. WINDOW BLINDS ARE TO BE STORED IN-PLACE, IN THE RETRACTED POSITION WITH THE CORDS WRAPPED UP TO PROTECT THEM.
 14. REFER TO ELECTRICAL DRAWING E603 FOR REMOVAL OF ALL DEVICES FROM WALL.
 15. REFER TO SECTIONS 01732 AND 01740 FOR DEMOLITION REQUIREMENTS AND WASTE MANAGEMENT.

13B GENERAL NOTES
SCALE: N.T.S.

PROJECT NORTH

D101

REVISION:

MKA
Michael Keathen & Associates, Inc.
1000 University Blvd., Suite 100
Clemson, SC 29634
P: 864.656.1945
F: 864.656.1947

LORD · AECK · SARGENT
ARCHITECTURE
1000 University Blvd., Suite 100
Clemson, SC 29634
P: 864.656.1945
F: 864.656.1947

SHEET TITLE: **DEMOLITION PLANS**

SCALE (X/A): **N.T.S.**

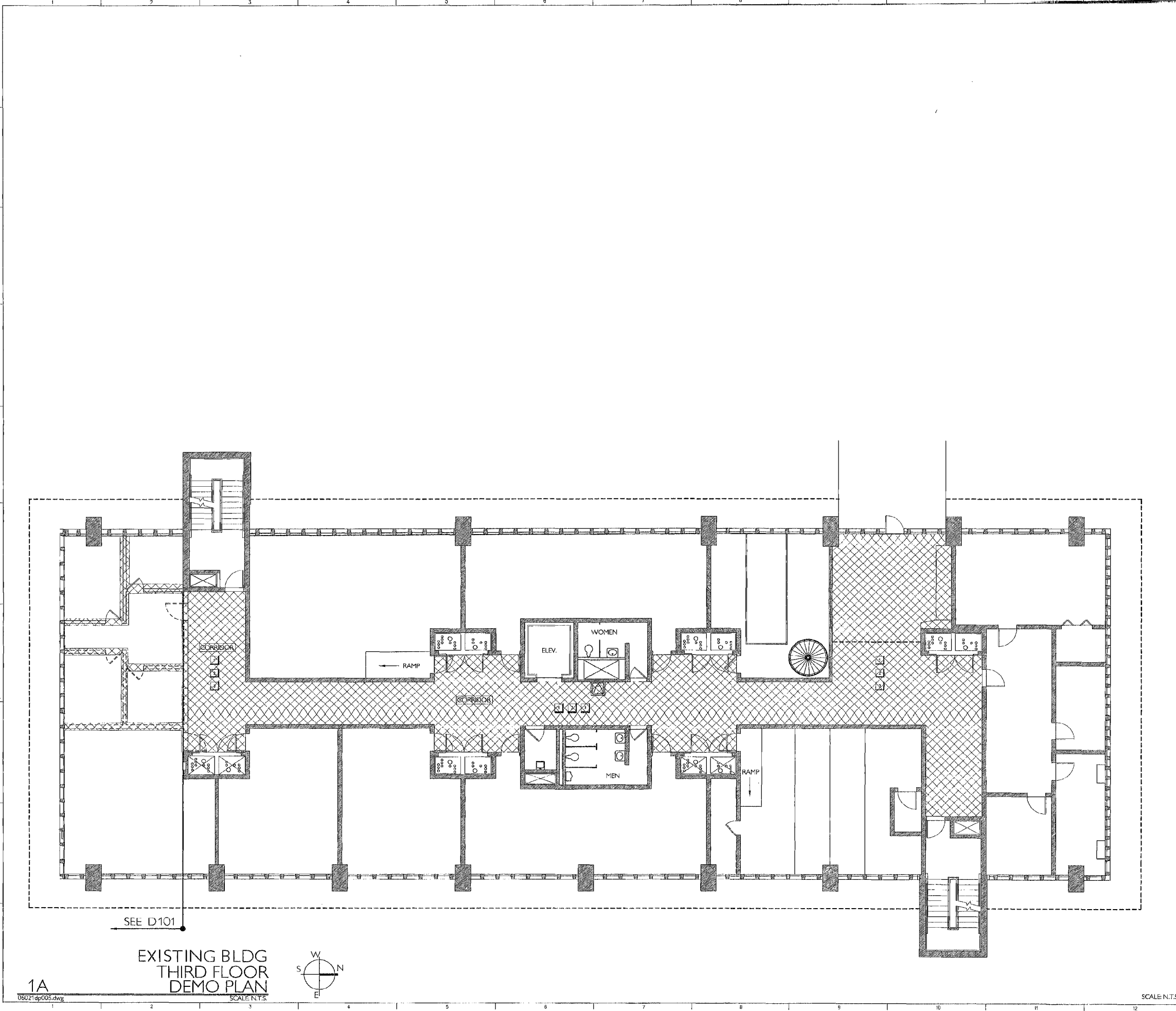
JOB NAME: **RHODES HALL ANNEX
CLEMSON UNIVERSITY
H12-9865-JM**

LOCATION: **CLEMSON, SOUTH CAROLINA**

ISSUE DATE: **08/17/07**

JOB NO.: **MKA - 06021
LAS - 28050-00**

DWG. NO.: **D101**



13K LEGEND
SCALE: N.T.S.

GENERAL AREA FOR PRIMARY DEMOLITION. MISCELLANEOUS DEMO SHALL EXTEND BEYOND THESE LIMITS.
 ASSEMBLIES TO BE REMOVED.
 WALL ASSEMBLIES TO REMAIN. REFER TO ARCH. PLANS FOR LIMITS.
 NEW ASSEMBLIES TO BE CONSTRUCTED - REFER TO ARCH. PLANS.

- 13F GENERAL NOTES**
SCALE: N.T.S.
1. THE CONTRACTOR SHALL VERIFY EXISTING CONDITIONS AND NOTIFY THE ARCHITECT/ OR OWNERS REPRESENTATIVE OF ANY DISCREPANCIES IN WRITING PRIOR TO DEMOLITION.
 2. DEMOLITION TO BE DONE IN ACCORDANCE WITH IBC AND OTHER APPLICABLE CODES.
 3. THE CONTRACTOR SHALL DISCONNECT UTILITIES - I.E. POWER, WATER, COMMUNICATIONS, FIRE ALARM, WITHIN THE LIMITS OF CONSTRUCTION PRIOR TO BEGINNING DEMOLITION.
 4. THE CONTRACTOR SHALL NOTIFY THE ARCHITECT/OWNER'S REPRESENTATIVE OF ANY UTILITY INTERRUPTIONS IMMEDIATELY.
 5. THE DEMOLITION CONTRACTOR WILL BE NOTIFIED IN WRITING BY A REPRESENTATIVE OF THE UNIVERSITY WHEN DEMOLITION MAY COMMENCE. THIS REQUIREMENT ALLOWS THE UNIVERSITY TO REMOVE ITEMS FOR SALVAGE PRIOR TO DEMOLITION.
 6. THE PURPOSE OF THESE DRAWINGS IS TO SHOW THE LIMITS OF DEMOLITION - THIS IS NOT A RECORD DOCUMENT OF EXISTING CONDITIONS, BUT A REPRESENTATION OF THE EXISTING SIZE AND SPACES.
 7. REFER TO ENGINEERING DRAWINGS FOR ADDITIONAL NOTES CONCERNING DEMOLITION OF PLUMBING, MECHANICAL, ELECTRICAL AND FIRE SUPPRESSION ASSEMBLIES.
 8. TIGHTNESS OF THE BUILDING SHALL NEVER BE COMPROMISED DURING CONSTRUCTION.
 9. THE CONTRACTOR SHALL SCHEDULE DEMOLITION SO DEBRIS SHALL BE REMOVED THROUGH THE NEW CONSTRUCTION.
 10. MISCELLANEOUS PATCHING WHEN REQUIRED SHALL MATCH THE ADJACENT MATERIALS IN FINISH, MATERIAL, AND CONSTRUCTION.
 11. IN LOCATIONS WHERE ELECTRICAL OR PLUMBING DEVICES ARE REMOVED, COVER PLATES ARE TO BE INSTALLED. WHEREVER POSSIBLE COVER ABANDONED BOXES. SEE MECHANICAL, ELECTRICAL, PLUMBING DRAWINGS.
 12. AT THE END OF CONSTRUCTION, OPERABLE WINDOW BLINDS ARE TO BE CLEANED IN EACH ROOM WHERE CONSTRUCTION TOOK PLACE IN THE EXISTING BUILDING.

- 13B DEMO NOTES**
- 1 REMOVE FLOOR TILE IN CORRIDOR, INCLUDING BUT NOT LIMITED TO TILE, ADHESIVE. REMOVE TILE TO UNDER DOOR THRESHOLD.
 - 2 REMOVE DEVICES FROM WALL INCLUDING BUT NOT LIMITED TO ELECTRICAL SWITCHES, RECEPTACLES, FIRE ALARM, HORNS, AND STROBES. PROVIDE EXTENSION RINGS AND REMOUNT DEVICES. REFER TO ELECTRICAL DWG'S FOR ADDITIONAL NOTES. REPLACE AFTER NEW WALLS ARE INSTALLED. FURNISH ALL MISCELLANEOUS ACCESSORIES REQUIRED FOR A COMPLETE INSTALLATION.
 - 3 REMOVE CEILING ASSEMBLIES, INCLUDING BUT NOT LIMITED TO CEILING PANELS, GRID, WALL ANGLE. MECHANICAL AND ELECTRICAL DEVICES ARE TO BE SUSPENDED PLACE AND REUSED IN NEW GRID. REFER TO ARCH, MECH, AND ELECTRICAL DWG'S FOR ADDITIONAL NOTES.

13A EXISTING BLDG THIRD FLOOR DEMO PLAN
SCALE: N.T.S.

06021dp005.dwg

SEE D101

08/17/07

JOB NO. MKA-08021
 L.A.S. - 25059-00
 DWG. NO. **D102**

PROJECT NORTH

REVISION:

MKA
MKA Architecture & Associates, Inc.
Architectural Services
1000 West 10th Street, Suite 100
Clemson, South Carolina 29634
Tel: 864/656-1234

LORD · AECK · SARCENT
ARCHITECTURE
© 2007 Lord, Aeck & Sargent, Inc.
www.lordsargent.com
P: 771.529.1400 F: 771.529.1491

SHEET TITLE: **DEMOLITION PLANS**
SCALE (IN.): 1/8" = 1'-0"

JOB NAME: **RHODES HALL ANNEX
CLEMSON UNIVERSITY
H12-9865-JM**
LOCATION: **CLEMSON, SOUTH CAROLINA**

ISSUE DATE: **08/17/07**