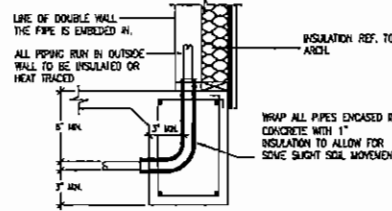


COPYRIGHT 2006 BY BRYANT BURTON KUPCINAS ARCHITECTS INC. THESE DRAWINGS AND SPECIFICATIONS ARE INSTRUMENTS OF SERVICE AND SHALL REMAIN THE PROPERTY OF THE ARCHITECT. THEY ARE NOT TO BE USED ON OTHER PROJECTS OR EXTENSIONS TO THIS PROJECT WITHOUT PRIOR WRITTEN AGREEMENT WITH THE ARCHITECT.

KITCHEN EQUIPMENT LOCATION AND DESIGNATIONS ARE PROVIDED FOR REFERENCE ONLY. FOR FINAL LOCATION, QUANTITIES, SPECS, REQUIREMENTS AND CONNECTIONS REFER TO KITCHEN DRAWINGS. ADDITIONAL PLUMBING SCOPE DESIGNED BY OTHERS.



STANDARD GRADE BEAM PENETRATION DETAIL
SCALE: 1/4" = 1'-0"

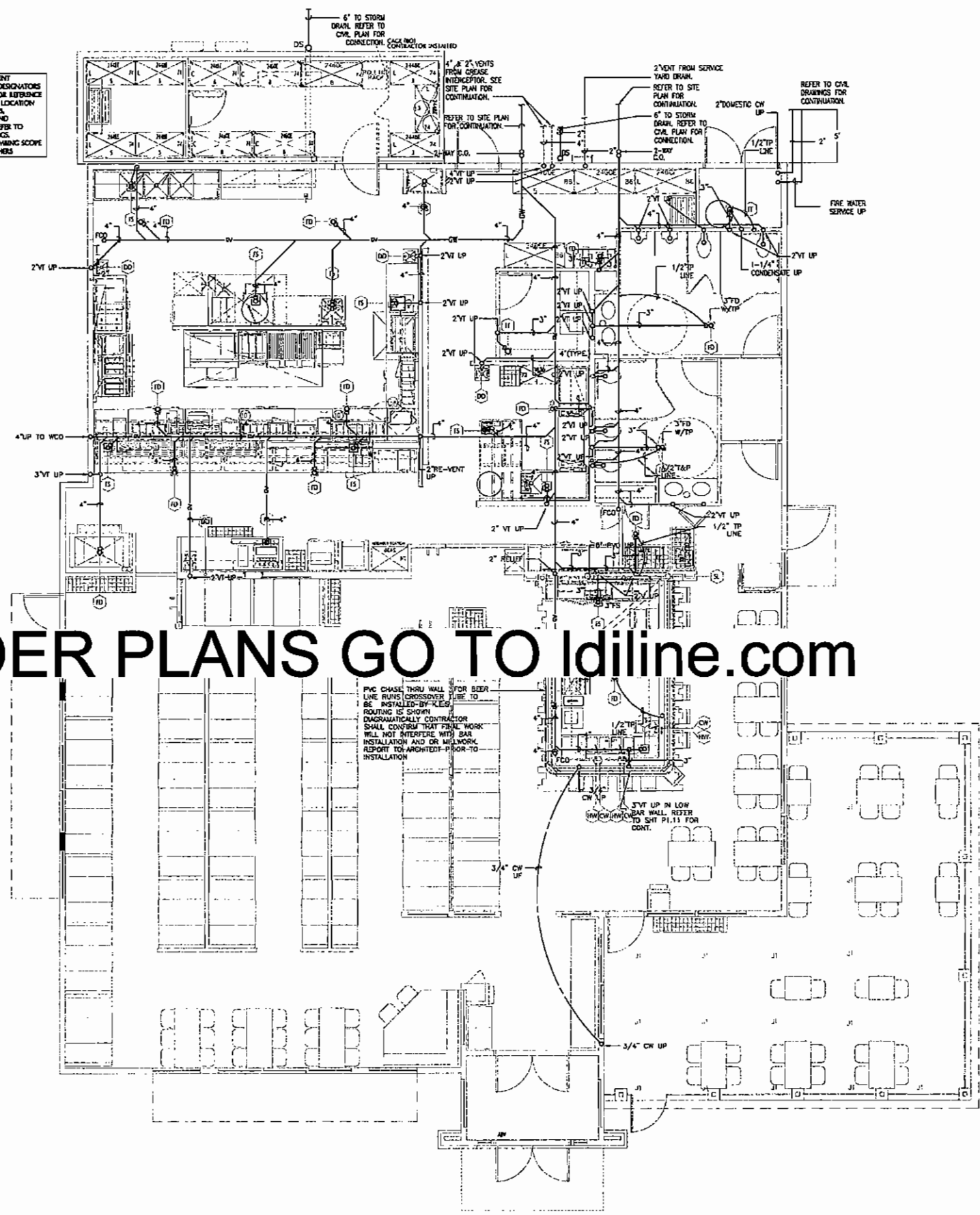
NOTE:

- DO NOT CUT CONTINUOUS REINFORCEMENT UNLESS EACH TRAP IS USED. (LAP BAR SAME DIAMETER AS PER PROJECTION).
- FLOORING MUST BE WORKED TO MEET THESE PAWS PER PROJECTION.

PLAN NOTE:

- ALL FLOOR DRAINS AND FLOOR SINKS NOT SHOWN TO BE PROVIDED WITH TRAP PRIMERS SHALL BE INSTALLED WITH DEEP SEAL (4" MINIMUM) P-TRAPS.

TO ORDER PLANS GO TO idiline.com



01 FLOOR PLAN - UNDERFLOOR PLUMBING
SCALE: 1/4" = 1'-0"

DAVID GRAHAM BRYANT
ARCHITECT

3200 Nash Street
Suite 13
Dallas, Texas 75226

MEP ENGINEER
Lumma & Company
MEP ENGINEERING
1111 West Loop West, Suite 1000
Dallas, Texas 75240

STRUCTURAL
Ronald A. Roberts and Assoc.
3400 W. Mockingbird Lane
Dallas, TX 75247

CIVIL
Carter & Sloope Inc.
6310 Peake Road
Macon, Georgia 31210

Chil's
12.5 Bonnaroo II
510 Commerce Blvd.
Intersection of Veterans Memorial Pkwy.
and Brannen St.
Statesboro, Georgia 30458

OWNER
Bonnaroo Restaurant II
Group, LP
115 S. Ashledge Ave.
Suite 11
Athens, GA 30605

OWNER'S CONSULTANT
TIC Development Co., LLC
1410 Midcrest Rd.
Ste. 136
Carrollton, TX 75006

CONTRACTOR SHALL VERIFY ALL CONDITIONS AND CONDITIONS OF THE SITE AND ALL INFORMATION PROVIDED BY THE OWNER AND ALL INFORMATION PROVIDED BY THE CONTRACTOR SHALL BE VERIFIED BY THE CONTRACTOR. THE CONTRACTOR SHALL BE RESPONSIBLE FOR OBTAINING ALL NECESSARY PERMITS AND APPROVALS FROM ALL APPLICABLE AGENCIES. THE CONTRACTOR SHALL BE RESPONSIBLE FOR OBTAINING ALL NECESSARY PERMITS AND APPROVALS FROM ALL APPLICABLE AGENCIES.



KEY PLAN

ISSUE
Permit Documents 04/09/07

Construction Set
BBK Project No. 2006-42
Drawn By: 003
Checked By: 003
Date: 04/09/07

FLOOR PLAN
UNDER FLOOR PLUMBING
Sheet No. P1.01

COPYRIGHT 2006 BY BRYANT BURTON BURTON ARCHITECTS INC. THESE DRAWINGS AND SPECIFICATIONS ARE INSTRUMENTS OF SERVICE AND SHALL REMAIN THE PROPERTY OF THE ARCHITECT. THEY ARE NOT TO BE USED ON OTHER PROJECTS OR EXTENSIONS TO THIS PROJECT WITHOUT PRIOR WRITTEN AGREEMENT WITH THE ARCHITECT.

DAVID GRAHAM BRYANT
ARCHITECT
3300 Main Street
Suite 13
Dallas, Texas 75226

MEP ENGINEER
Landis & Company
MEP ENGINEERS
1420 W. Mockingbird Lane
Dallas, TX 75207

STRUCTURAL
Ronald A. Roberts and Assoc.
1420 W. Mockingbird Lane
Dallas, TX 75207

CIVIL
Carter & Sloope, Inc.
6370 Pezala Road
Macon, Georgia 31210

Chil's
12.5 Bonnaroo II
510 Commerce Blvd.
Intersection of Veterans Memorial Pkwy.
and Brannen St.
Statesboro, Georgia 30458

OWNER
Bonnaroo Restaurant II
Group, L.P.
123 S. Millidge Ave.
Suite H
Athens, GA 30605

OWNER'S CONSULTANT
TIG Development Co., LLC
3410 Midcourt Rd.
Ste. 116
Carrollton, TX 75006

CONTRACTOR SHALL VERIFY ALL CONDITIONS AND CONDITIONS AT THE JOB SITE AND NOTIFY ARCHITECT IMMEDIATELY IN WRITING OF ANY DISCREPANCIES OR CHANGES TO THE CONTRACT DOCUMENTS. DO NOT START CONSTRUCTION UNTIL ALL DISCREPANCIES ARE RESOLVED.



KEY PLAN

ISSUE
Permit Documents 04/09/07

Construction Set

BAK Project No. 2006-02
Drawn By: 003
Checked By: 003
Date: 04/09/07

FLOOR PLAN ABOVE FLOOR PLUMBING

Sheet No. P1.11

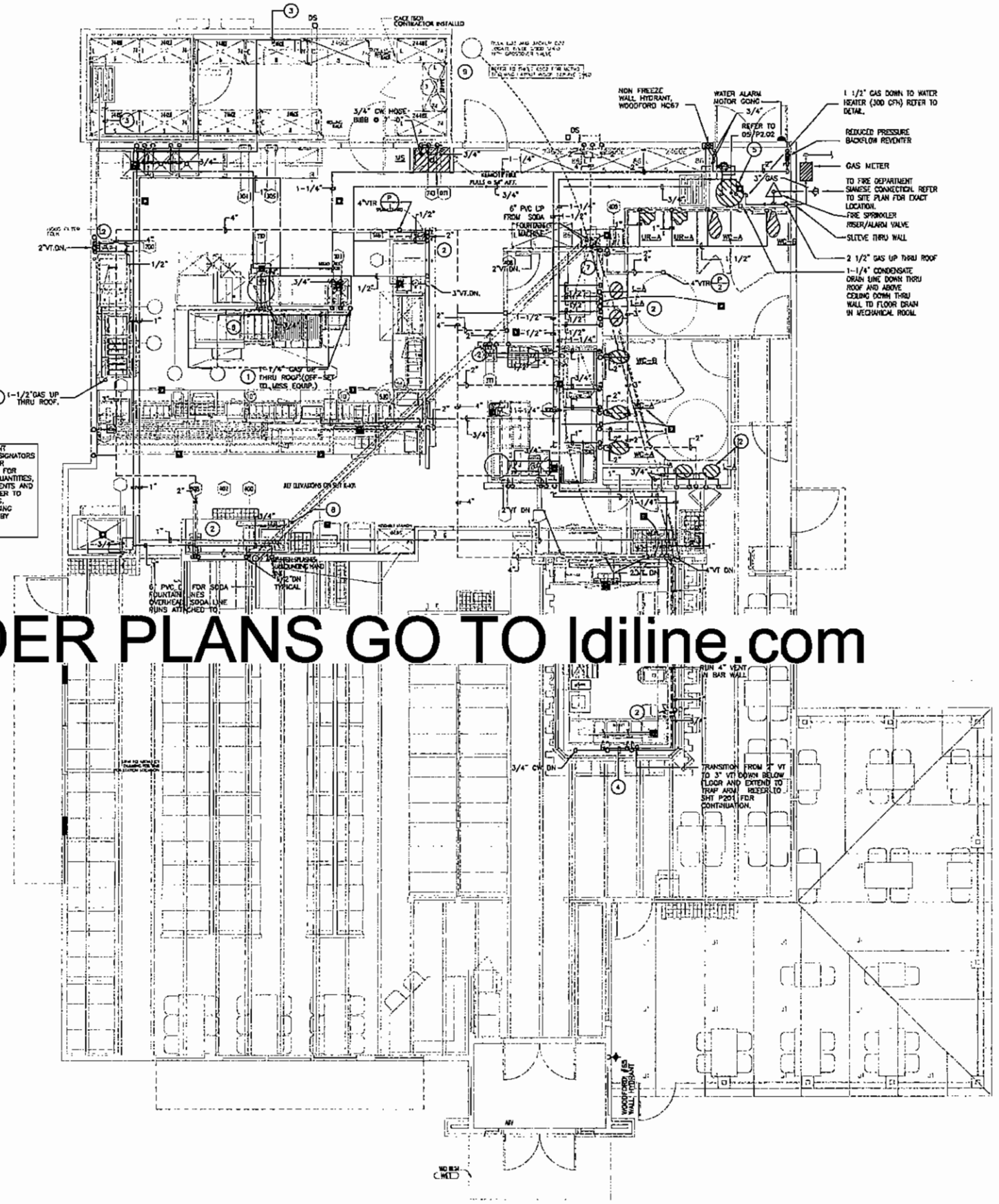
GENERAL NOTES:

- A. PROVIDE VACUUM BREAKERS ON DISH MACHINE RINSE LINES. VACUUM BREAKER IS REQUIRED.
- B. ALL JO CONNECTED TO THE WASTE LINES WITH A MINIMUM 2" OR 2X PIPE DIAMETER ARE DAM, WHICHEVER IS GREATER.
- C. REFER TO ARCHITECTURAL AND KITCHEN DRAWINGS FOR EXACT LOCATION AND DIMENSIONAL DATA.
- D. PROVIDE CHECK VALVES ON MOP SINK, PRE-RINSE FAUCETS, WATER SOFTENER, KETTLE FAUCETS AND ALL MIXING VALVES.
- E. PROVIDE LAVATORY THERMOSTATIC MIXING VALVE TO BE SET TO DELIVER 110° AT EACH LAVATORY AND HAND SINK WHERE INSTALLED.
- F. CONTRACTOR SHALL PROVIDE COPPER LABELS INDICATING TYPE AND DIRECTIONAL FLOW TO THE PIPING IN THE MECHANICAL ROOM.
- G. PROVIDE CHECK VALVE EQUAL TO WATTS SERIES 601 CHECK VALVE ON THE HOT AND COLD WATER SUPPLY LINES TO THE FOLLOWING PIECES OF EQUIPMENT TO PREVENT BACKFLOW OF HOT AND COLD WATER INTO OPPOSITE LINES: PRE-RINSE SPRAYER, MOP SINK, KETTLE FILLER, AND 3-COMPARTMENT SINK. FEED WATER FROM OVERHEAD AND MOUNT CHECK VALVE ABOVE CEILING.
- H. REFER TO ARCHITECTURAL/KITCHEN DRAWINGS FOR EXACT KITCHEN EQUIPMENT LOCATION, LAYOUT AND SPECIFICATIONS.

KEYED NOTES:

- 1 PROVIDE SOLENOID VALVE. CONNECT TO ASSOCIATED FIRE SUPPRESSION SYSTEM. VALVE TO BE RESET MANUALLY.
- 2 PROVIDE THERMOSTATIC MIXING VALVES AT LAVATORIES, KITCHEN HAND SINKS, HAND SINKS AND BAR SINKS. SET VALVE AT 110° HOT WATER.
- 3 PROVIDE 3/4" HARD COPPER LINE FROM COOKING UNITS TO FLOOR DRAIN IN KITCHEN WITH FUNNEL. HEAT TRACE ALL DRAIN LINES IN FREEZER.
- 4 RUN COLD WATER, HOT WATER AND HOT WATER RETURN IN WALL AT BAR, DISALUTE PIPING.
- 5 REFER TO SHEET 5/P202 FOR WATER HEATER PIPING AND SIZING DIAGRAM. REFER TO WATER HEATER AND REFORM. PUMP SCHEDULE P202.
- 6 GAS LINES AT WALL UNDER BOTH HOODS TO BE RUN AT 36" AFF.
- 7 PROVIDE RED ALARM LITE SYSTEM IN OFFICE WHICH SHALL LITE UP IF HOT WATER SUPPLY TEMPERATURE AT WATER HEATER DROPS BELOW 140°F.
- 8 ROUTE 8" PVC PIPE TO SODA FAUX LOCATION. CONTRACTOR FIELD VERIFY FINAL LOCATION AND ROUTING AND REPORT TO ARCH/ENG/OWNER PRIOR TO INSTALLATION.
- 9 RUN CO2 LINES THROUGH WALL SLEEVE AND ABOVE CEILING TO SODA DAD-IN-BOX.

KITCHEN EQUIPMENT LOCATION AND DESIGNATORS ARE PROVIDED FOR REFERENCE ONLY. FOR FINAL LOCATION QUANTITIES, SPECS, ADJUSTMENTS AND CONNECTIONS REFER TO KITCHEN DRAWINGS. ADDITIONAL PLUMBING SCOPE DESIGNED BY OTHERS.



01 FLOOR PLAN - ABOVE FLOOR PLUMBING
SCALE: 1/4" = 1'-0"

COPYRIGHT 2006 BY BURTON BURTON ARCHITECTS INC. THESE DRAWINGS AND SPECIFICATIONS ARE INSTRUMENTS OF SERVICE AND SHALL REMAIN THE PROPERTY OF THE ARCHITECT. THEY ARE NOT TO BE USED ON OTHER PROJECTS OR EXTENSIONS TO THIS PROJECT WITHOUT PRIOR WRITTEN AGREEMENT WITH THE ARCHITECT.

DAVID GRAHAM BRYANT
ARCHITECT

3200 Main Street
Suite 13
Dallas, Texas 75226
MEP ENGINEER
Lundquist & Company
MEP ENGINEERS
1800 Ross Avenue
Dallas, Texas 75201
Tel: 972.352.2222 Fax: 972.352.2222

STRUCTURAL
Ronald A Roberts and Assoc.
7420 W. Mockingbird Lane
Dallas, TX 75247

CIVIL
Carter & Scoop, Inc.
6310 Peake Road
Macon, Georgia 31210

Chil's
Chil's 12.5 Bonnaroo II
510 Commerce Blvd.
Intersection of Veterans Memorial Pkwy.
and Brammen St.
Statesboro, Georgia 30458

OWNER
Bonnaroo Restaurant II
Crosby, LP
125 S. Holladay Ave.
Suite H
Athens, GA 30605

OWNER'S CONSULTANT
TIC Development Co, LLC
2410 Hickcourt Rd.
Ste. 106
Carrollton, TX 75006

CONTRACTOR SHALL VERIFY ALL CONDITIONS AND DIMENSIONS AT THE JOB SITE AND NOTIFY ARCHITECT IMMEDIATELY IN WRITING OF ANY DISCREPANCIES OR OMISSIONS. NO PART OF THESE DRAWINGS IS TO BE REPRODUCED OR TRANSMITTED IN ANY FORM OR BY ANY MEANS, ELECTRONIC OR MECHANICAL, INCLUDING PHOTOCOPYING, RECORDING, OR BY ANY INFORMATION STORAGE AND RETRIEVAL SYSTEM.



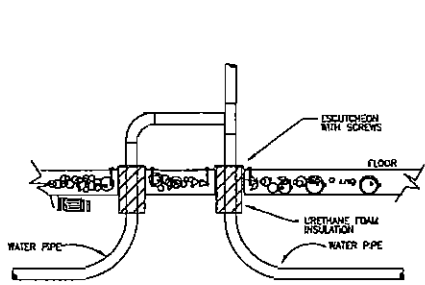
KEYPLAN

ISSUE
Permit Documents 04/09/07

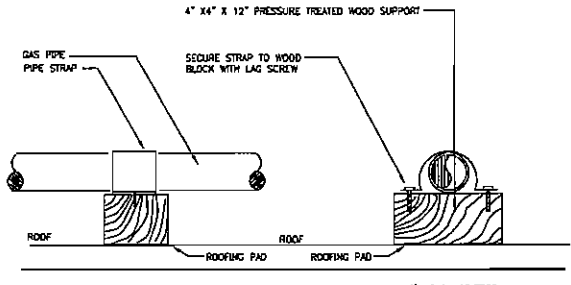
Construction Set
B&K Project No. 2006-02
Drawn By: 003
Checked By: 003
Date: 04/09/07

PLUMBING SCHEDULES AND DETAILS

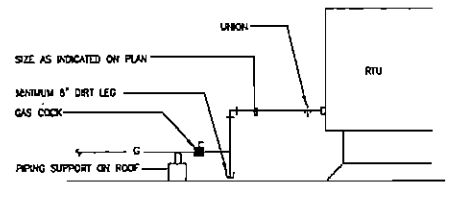
Sheet No: **P202**



01 NOT USED
SCALE:



02 WATER SUPPLY RISER DETAIL
SCALE: 1/8" = 1'-0"



03 GAS PIPE SUPPORT DETAIL
SCALE: 1/8" = 1'-0"

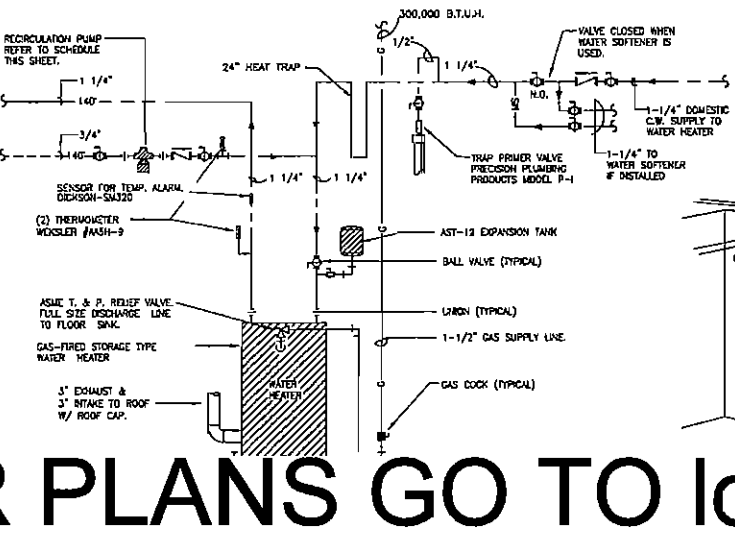
04 AHU GAS PIPING CONNECTION
SCALE: 1/8" = 1'-0"

DRAINS AND CLEANOUTS

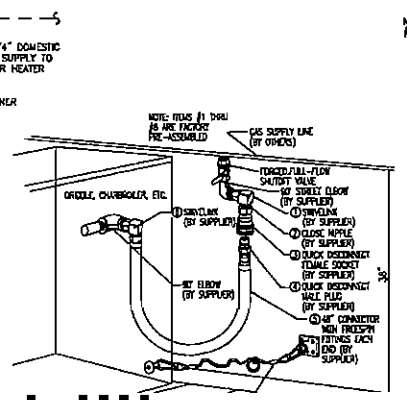
- All drains and cleanouts shall be provided and detailed as required and as shown. Drains shall have cast iron bodies with screwed or checked connections of the sizes and types shown and specified. Provide deep seal cast iron 7" traps on all floor drains connected to the sanitary sewer.
- Manufacturer's figure numbers are specified to indicate type, quality and construction. Similar and equal products of approved manufacturers may be substituted for those specified numbers below.
- Floor drains for use in toilet rooms similar tiled and finished areas shall be similar to Joeson Series 30000-5 cast iron floor drain with double drainage flange, weep holes, bottom outlet, flashing-clamping device and square nickel chrome adjustable strainer. Where drains are used to receive indirect waste from kitchen and other similar equipment, they shall be furnished with other furnished, cast brass finished to match the grates, or partial type grates of factory fabricated by the drain manufacturer and completely finished to match the grates. Where drains are located out of doors and connected to sanitary sewer, provide bronze hinged cover with internal strainer.
- Floor sinks shall be square cast iron floor sink with enameled interior non-1 1/2" aluminum strainer double drainage flange with weep holes bottom outlet and flashing clamping device similar to Joeson Series 49000.
- Exterior drain of service yard shall be Joeson 37804-14 cast iron, 12 x 12 floor drain with hinged bronze cover.
- Floor cleanouts shall be cast iron floor cleanouts section, bronze internal plug and nickel chrome a secured to plug by countersunk screw, similar to where floor cleanouts occur in the floor they are.
- Wall cleanouts (except as specified above) shall be cast iron caulked ferrule with bronze plug and stainless steel coverplate and frame, similar to Joeson 58700.
- Trap primers shall be oil bronze unit with removable operating parts, integral vacuum breaker and gasketed threaded cover. Units shall be for installation in cold water line and connected to floor drain inlet or special fitting. Refer to drawings for type.

PLUMBING SYMBOL SCHEDULE	
SYMBOL	DESCRIPTION
—	SANITARY SEWER
—	VENT LINE
S	STORM DRAIN
D	DRAIN (CONDENSATE)
F	FIRE PROTECTION LINE
—	NATURAL GAS LINE
—	DOMESTIC COLD WATER
—	DOMESTIC HOT WATER
—	DOMESTIC HOT WATER RETURN
—	DIRECTION OF FLOW
—	CLEANOUT
—	DOUBLE CLEANOUT
—	GATE VALVE
—	BALL VALVE OR BALANCED VALVE
—	CHECK VALVE
—	STRAINER
—	COCK (GAS)

B.F.F. BELOW FINISHED FLOOR
A.F.G. ABOVE FINISHED GRADE



05 GAS WATER HEATER PIPING DIAGRAM
SCALE: 1/8" = 1'-0"

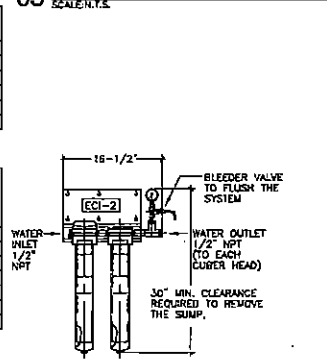


06 KITCHEN EQUIPMENT QUICK DISCONNECT DIAGRAM AT FRIER
SCALE: 1/8" = 1'-0"

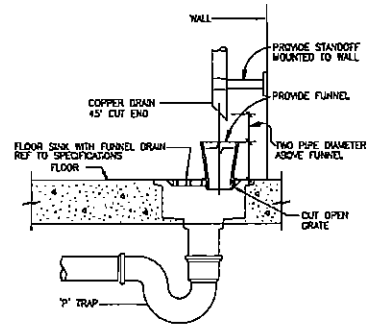
CONTRACTOR SHALL CONTACT NATIONAL WHOLESALE TO PURCHASE ALL EQUIPMENT NOTED AND SCHEDULED ON THESE DRAWINGS.
List Name: B&K
List Price: \$140.00
List Qty: 1
List Unit: EACH
Company: B&K
Business Address: Statesboro, GA
Phone: (478) 335-4333
Fax: (478) 335-4334
E-mail: bkg@bkg.com
© 2006 B&K Inc. All Rights Reserved.

WATER HEATER SCHEDULE	
SERVICE TEMPERATURE	140° F.
STORAGE	100 GALLON
RECOVERY AT 100° RISE	3.5 G.P.M.
INPUT	300,000 B.T.U.H.
UNIT REQUIRED	EF-1001-300-3VA
MFG.	BRADFORD WHITE

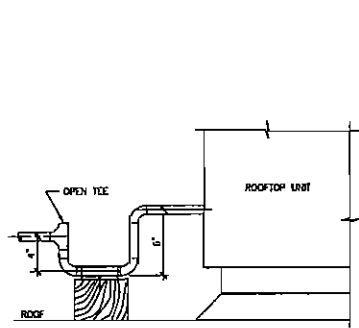
DOMESTIC HOT WATER CIRCULATOR SCHEDULE	
GALLONS PER MINUTE	3
TOTAL HD. (FT.)	9
LOADS TEMPERATURE	140° F.
MOTOR HORSEPOWER	1/12
MOTOR R.P.M.	1725
ELECTRICAL CHARACTERISTIC	120/1/60
SIMILAR TO	B&G SC-75



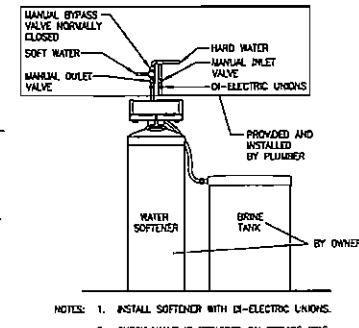
07 WATER FILTER DETAIL
SCALE: 1/8" = 1'-0"



08 INDIRECT WASTE DETAIL
SCALE: 1/8" = 1'-0"



09 CONDENSATE DRAIN CONNECTION
SCALE: 1/8" = 1'-0"



10 WATER SOFTENER CONNECTION
SCALE: 1/8" = 1'-0"

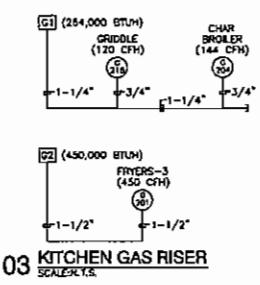
- NOTES:
- INSTALL SOFTENER WITH DI-ELECTRIC LINKS.
 - CHECK VALVE IS REQUIRED ON SERVICE SIDE OF SOFTENER.
 - CHECK LOCAL PLUMBING CODES TO DETERMINE PLUMBING REQUIREMENTS FOR FEED WATER TO SOFTENER.
 - PRICE SCOPE AS ADD ALTERNATE TO BE INSTALLED ONLY AFTER CONTRACTOR CONFIRMS LOCAL WATER PROPERTIES.

COPYRIGHT 2006 BY BRYANT ARCHITECTS INC. THESE DRAWINGS AND SPECIFICATIONS ARE INSTRUMENTS OF SERVICE AND SHALL REMAIN THE PROPERTY OF THE ARCHITECT. THEY ARE NOT TO BE USED ON OTHER PROJECTS WITHOUT PRIOR WRITTEN AGREEMENT WITH THE ARCHITECT.

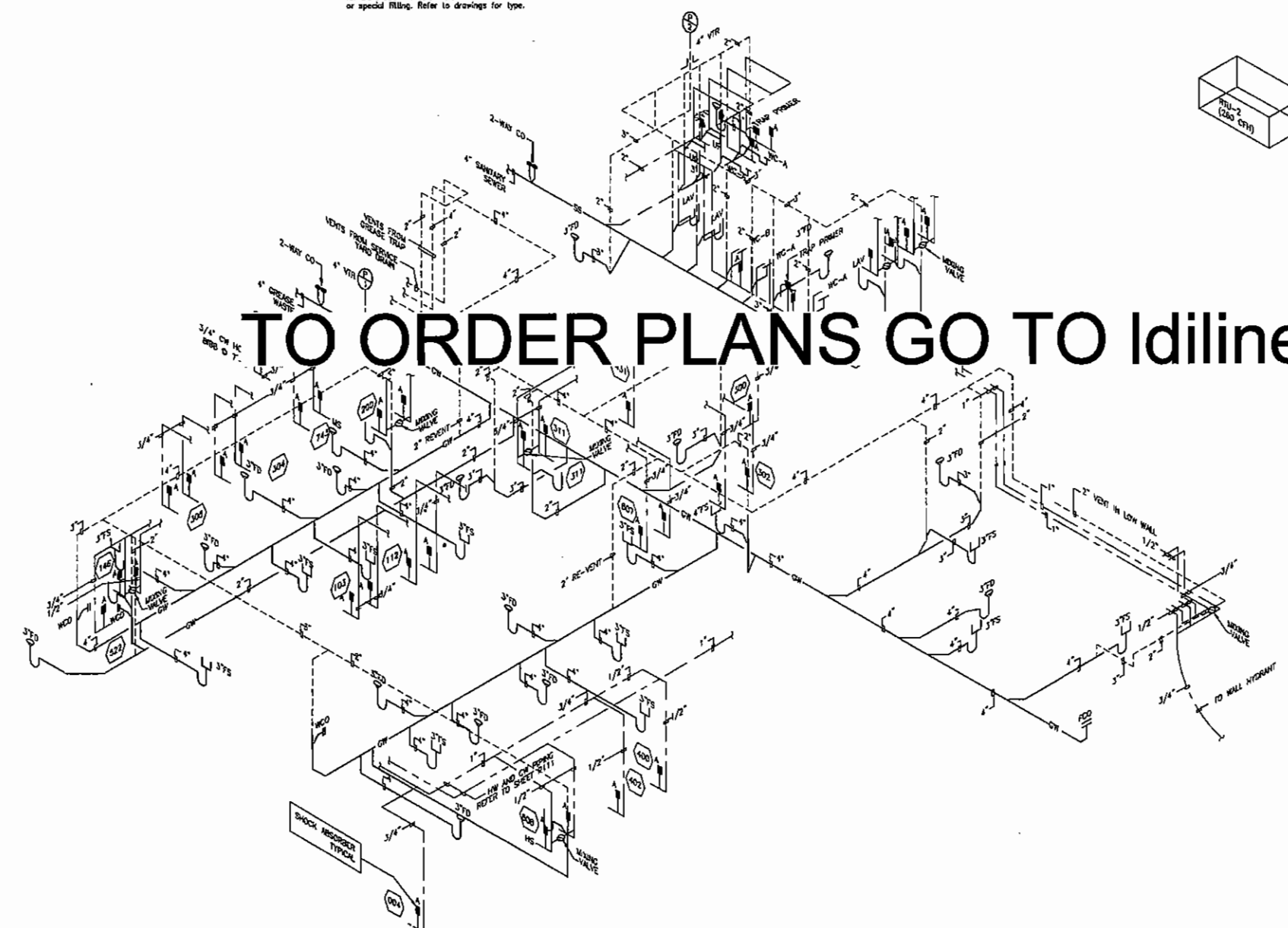
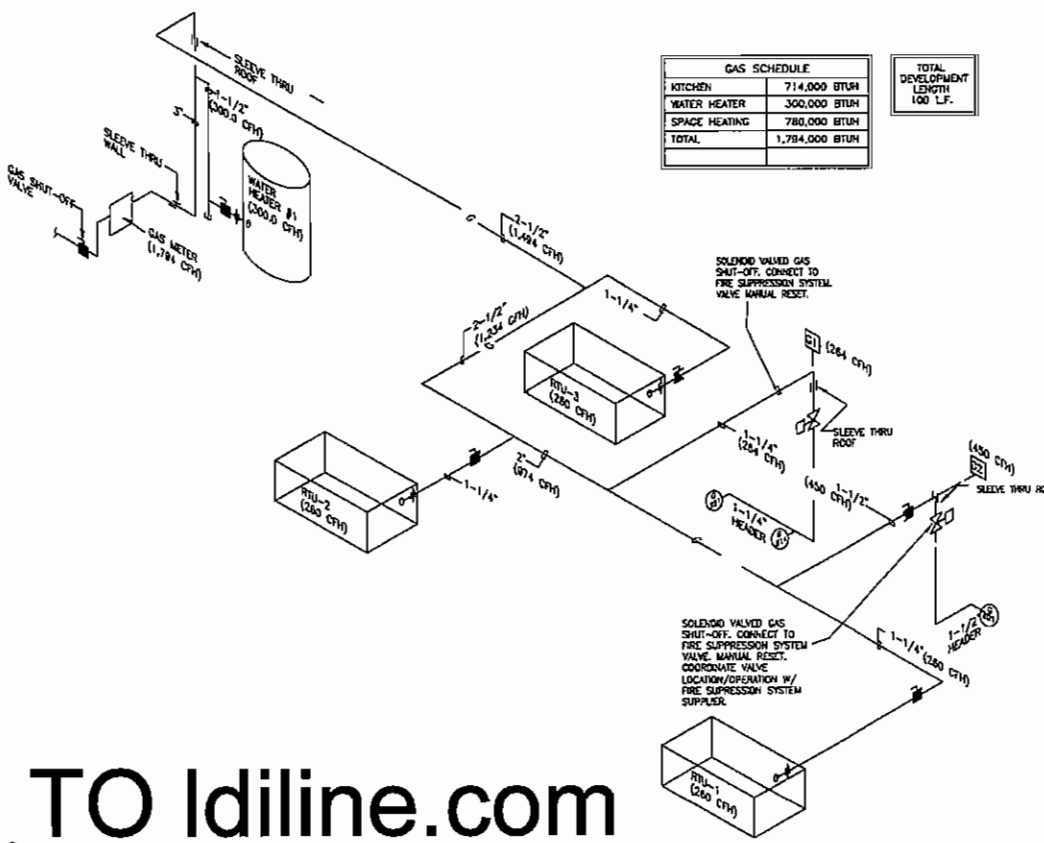
SYMBOL	DESCRIPTION
---S---	SANITARY SEWER
---V---	VENT LINE
---S---	STORM DRAIN
---D---	DRAIN (CONDENSATE)
---F---	FIRE PROTECTION LINE
---G---	NATURAL GAS LINE
---C---	DOMESTIC COLD WATER
---H---	DOMESTIC HOT WATER
---R---	DOMESTIC HOT WATER RETURN
---	DIRECTION OF FLOW
---	DIRECTION OF FALL
○	C.O.
○	CLEANOUT
○	DOUBLE CLEANOUT
○	UNION
○	GATE VALVE
○	BALL VALVE OR BALANCING VALVE
○	CHECK VALVE
○	STRAINER
○	COCK (GAS)
○	HOSE BIBB
○	N.F.W.H. NON FREEZE WALL HYDRANT
○	V.T.R. VENT THRU ROOF
○	A.F.F. ABOVE FINISHED FLOOR
○	B.F.F. BELOW FINISHED FLOOR
○	A.F.G. ABOVE FINISHED GRADE

DRAINS AND CLEANOUTS

- All drains and cleanouts shall be provided and installed as required and as shown. Drains shall have cast iron bodies with screened or checked connections of the sizes and types shown and specified. Provide deep seal cast iron 7" traps on all floor drains connected to the sanitary sewer.
- Manufacturer's figure numbers are specified to indicate type, quality and construction. Similar and equal products of approved manufacturers may be substituted for those specified numbers below.
- Floor drains for use in toilet rooms similar tiled and finished areas shall be similar to Jossam Series 30000-S cast iron floor drain with double drainage flange, weep holes, bottom outlet, flushing-clamping device and square nickel chrome adjustable strainer. Where drains are used to receive indirect waste from kitchen and other similar equipment, they shall be furnished with either funnels, cast brass finished to match the grates, or partial type grates all factory fabricated by the drain manufacturer and completely finished to match the grates. Where drains are located out of doors and connected to sanitary sewer, provide bronze hinged cover with internal strainer.
- Floor drains shall be square cast iron floor drain with enameled interior non-12 aluminum strainer double drainage flange with weep holes bottom outlet and flushing clamping device similar to Jossam Series 49000.
- Exterior drain of service yard shall be Jossam 37804-14 cast iron, 12x12 floor drain w/hinged bronze cover.
- Floor cleanouts shall be cast iron floor cleanouts with scoriolated cut-off section, bronze internal plug and nickel chrome scoriolated coverplate secured to plug by countersunk screw, similar to Jossam Series 56000. Where floor cleanouts occur in tile floor they shall have square covers.
- Wall cleanouts (except as specified above) shall be cast iron coupling ferrule with bronze plug and stainless steel coverplate and frame, similar to Jossam 58700.
- Trap primers shall be oil bronze unit with removable operating parts, integral vacuum breaker and gasketed thread cover. Units shall be for installation in cold water line and connected to floor drain inlet or special fitting. Refer to drawings for type.



GAS SCHEDULE		TOTAL DEVELOPMENT LENGTH 100 LF.
KITCHEN	714,000 BTUH	
WATER HEATER	300,000 BTUH	
SPACE HEATING	780,000 BTUH	
TOTAL	1,794,000 BTUH	



TO ORDER PLANS GO TO Idiline.com

02 GAS RISER DIAGRAM
SCALE: 1/4" = 1'-0"
RISER IN BLUE GAS CONNECTIONS.

01 PLUMBING RISER DIAGRAM
SCALE: 1/4" = 1'-0"

PLUMBING FIXTURES

- WC-A WATER CLOSETS SHALL BE LOW WATER USE, VITREOUS CHINA SIPHON JET ACTION, ELONGATED FLOOR MOUNTED BOWL WITH 1-1/2 INCH TOP STUO. CLOSET SHALL BE FURNISHED COMPLETE WITH DIAPHRAGM ACTION FLUSH VALVE AND SOLID PLASTIC, OPEN FRONT, SELF-SUSTAINING SEAT WITH CHECK HINGE. FIXTURE SHALL BE SIMILAR TO AMERICAN STANDARD 2234.015 WITH SLDAN "ROYAL" 111 FLUSH VALVE AND CHURCH BROTHERS SEAT, SLDAN G2 OPTIMA PLUS EXPOSED BATTERY POWERED WATER CLOSET FLUSHMETER.
- WC-B WATER CLOSETS SHALL BE LOW WATER USE, VITREOUS CHINA SIPHON JET ACTION, ELONGATED FLOOR MOUNTED BOWL WITH 1-1/2 INCH TOP STUO. CLOSET SHALL BE FURNISHED COMPLETE WITH DIAPHRAGM ACTION FLUSH VALVE AND SOLID PLASTIC, OPEN FRONT, SELF-SUSTAINING SEAT WITH CHECK HINGE. FIXTURE SHALL BE FLOOR MOUNTED WATER CLOSETS FOR THE ADA 17 INCH HIGL AMERICAN STANDARD 304.102 WITH CHURCH 8500.NSSC SEAT, SLDAN G2 OPTIMA PLUS EXPOSED BATTERY POWERED WATER CLOSET FLUSHMETER.
- L-A COUNTERTOP LAVATORIES SHALL BE INTEGRAL BOWL LAVATORY WITH FRONT OVERFLOW, SINGLE LEVER, CERAMIC CARTRIDGE TYPE FAUCET WITH AERATOR WITH FLOW RESTRICTOR AND OPEN GRID STRAINER. FAUCET STANDARD 2385.009.002 AND STRAINER INSULATE WASTE AND WATER SUPPLIES WITH TRUEDRO KIT, ADA COMPLIANT.
- UR-A URINAL SHALL BE VITREOUS CHINA WITH A 3/4" REAR SPUD. URINAL SHALL BE 1.0 GALLON (3.78L) FLUSH. KOHLER BRASS/K-4972-R, WHITE, STAINLESS STEEL, STRAINER X-9163, TOUCHLESS BATTERY-POWERED URINAL FLUSH VALVE K1389R, WALL MOUNTED.
- MS MOP SINKS SHALL BE MOLDED REINFORCED POLYESTER RESIN 24 X 36 INCH CORNER MODEL FLOOR SINK WITH 3 INCH OUTLET STAINLESS STEEL CORNER FLASHING AND COMBINATION SUPPLY FAUCET WITH INTEGRAL STOPS, VACUUM BREAKER. FIXTURE SHALL BE SIMILAR TO FIAT MODEL MSB J624 WITH AMERICAN STANDARD 8344.112 FAUCET COMBINATION, NON-THREADED.
- A APPROVED MANUFACTURERS: PLUMBING FIXTURES AND BRASS: AMERICAN STANDARD, ELVER, FIAT, KOHLER AND WILLIAMS.
- B HOSE BIBB: NON FREEZE WALL HYDRANT BY WOODFORD HC57 AND 65.
- C WATER TEMPERING VALVE SHALL BE EQUAL TO SYMONS MODEL 4-108, TEMPERED WATER SUPPLY TO ONE FAUCET W/ 3/8" COMPRESSION CONNECTIONS AND IN-LINE CHECKS FOR HOT AND COLD SUPPLIES, FULLY ADJUSTABLE WATER TEMP.
- D CHECK VALVES SHALL BE EQUAL TO WATTS SERIES 601.
- FD #R SMITH 2130 MEDIUM DUTY FLOOR DRAIN.

DAVID GRAHAM BRYANT
ARCHITECT
3200 Main Street
Suite 13
Dallas, Texas 75226
MSP ENGINEER
Lundquist & Company
Structural
Ronald A Roberts and Assoc
1420 W. Mockingbird Lane
Dallas, Tx 75247
Civil
Carter & Slope, Inc.
6310 Peake Road
Macon, Georgia 31210

Chil's 12.5 Bonnaroo II
510 Commerce Blvd.
Intersection of Veterans Memorial Pkwy.
and Brannen St.
Statesboro, Georgia 30458

OWNER
Bonnaroo Restaurant II
Group, LP
725 S. Millidge Ave.
Suite H
Athens, GA 30605
OWNER'S CONSULTANT
TIG Development Co, LLC
3410 Midcourt Rd.
Ste. 236
Carrollton, TX 75006

CONTRACTOR SHALL VERIFY ALL CONDITIONS AND DIMENSIONS OF THE JOB SITE BEFORE THE COMMENCEMENT OF ANY WORK. THE CONTRACTOR SHALL BE RESPONSIBLE FOR OBTAINING ALL NECESSARY PERMITS AND APPROVALS FROM THE LOCAL, STATE, AND FEDERAL AUTHORITIES. THE CONTRACTOR SHALL BE RESPONSIBLE FOR OBTAINING ALL NECESSARY PERMITS AND APPROVALS FROM THE LOCAL, STATE, AND FEDERAL AUTHORITIES.



KEYPLAN

ISSUE

Form Documents 04/09/07

Construction Set

SSK Project No. 2006-01

Drawn By: 003

Checked By: 003

Date: 04/09/07

PLUMBING RISER DIAGRAM

Sheet No. **P2.01**