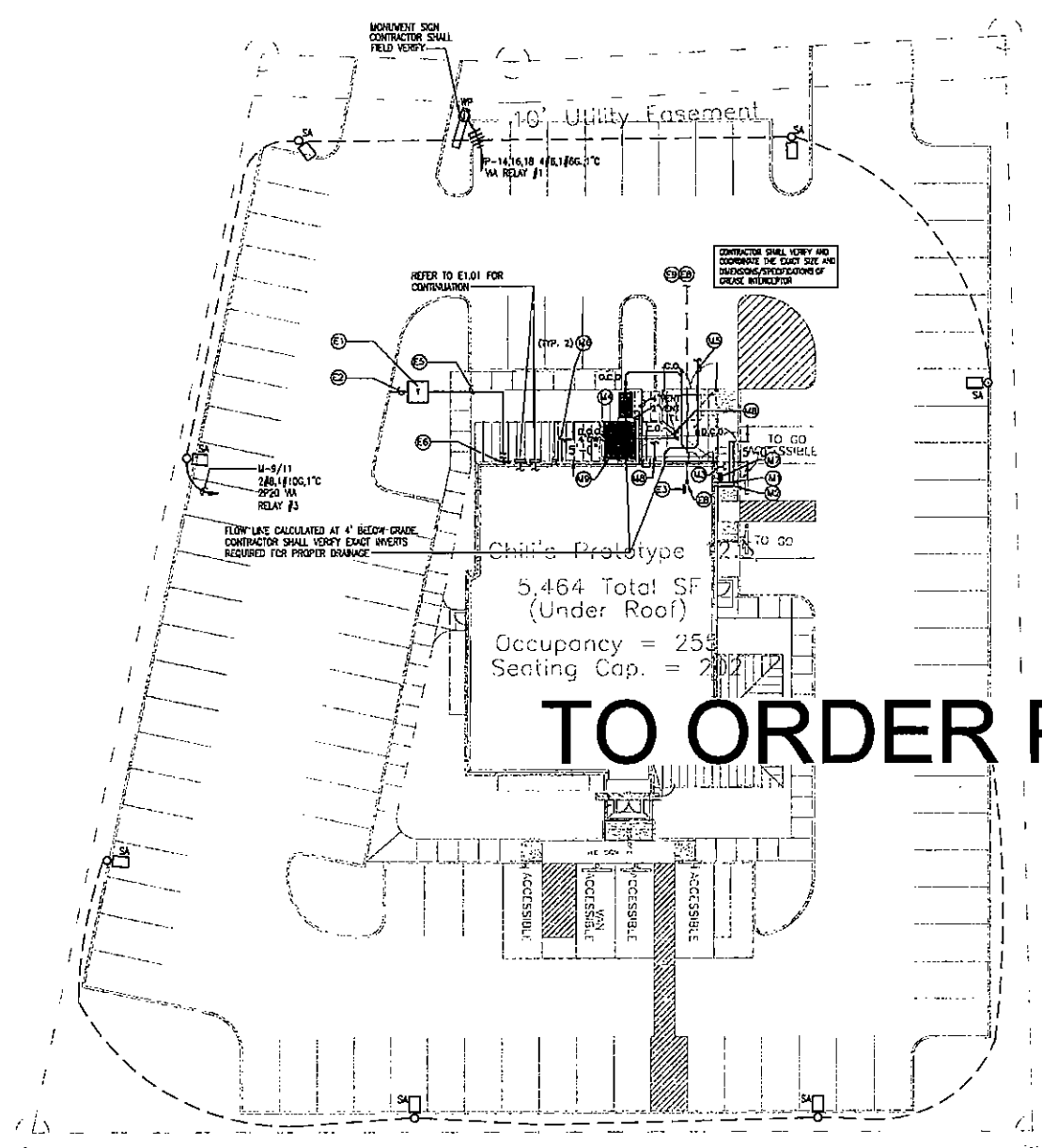


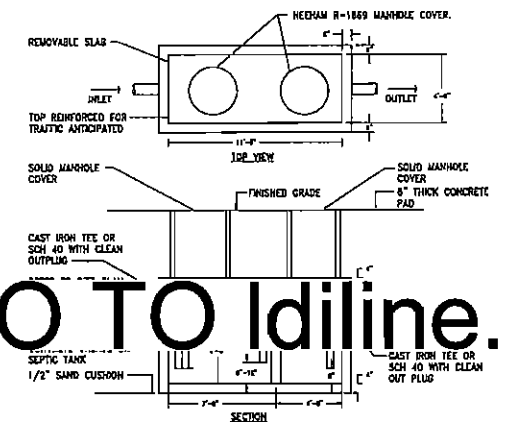
COPYRIGHT © 2006 BRYANT BURTON KUPCLINAS ARCHITECTS INC. THESE DRAWINGS AND SPECIFICATIONS ARE INSTRUMENTS OF SERVICE AND SHALL REMAIN THE PROPERTY OF THE ARCHITECT. THEY ARE NOT TO BE USED ON OTHER PROJECTS OR EXTENSIONS TO THIS PROJECT WITHOUT PRIOR WRITTEN AGREEMENT WITH THE ARCHITECT.



**01 SITE PLAN - MEP**  
SCALE: 1/16"=1'-0"

UTILITY COMPANY CONTACTS			
FOR INFORMATION AND COORDINATION OF SERVICES CONTACT THE FOLLOWING:			
UTILITY	COMPANY	REPRESENTATIVE	PHONE
ELECTRIC	PROGRESS ENERGY	SEE CIVIL	
TELEPHONE	BELL SOUTH	SEE CIVIL	
WATER	CITY	SEE CIVIL	
GAS	S.C.E.G	SEE CIVIL	
SANITARY SEWER	CITY	SEE CIVIL	
CABLE	TIME WARNER	SEE CIVIL	

RESPONSIBILITY OF ELECTRICAL UTILITY SERVICE		
	ELECTRIC UTILITY COMPANY	GENERAL CONTRACTOR
PRIMARY CONDUIT	-	x
PRIMARY CONDUCTORS	x	-
TRANSFORMER PAD	x	-
TRANSFORMER OR POLE	x	-
SECONDARY CONDUIT	-	x
SECONDARY CONDUCTORS	-	x

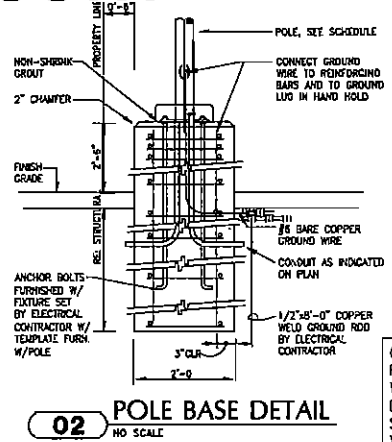


**MECHANICAL SITE NOTES:**

- (M1) 2" DOMESTIC WATER SUPPLY. MAINTAIN 12" MINIMUM CLEARANCE FROM THE TOP OF THE SANITARY SEWER LINE. REFER TO CIVIL DRAWINGS FOR CONTINUATION.
- (M2) FIRE SERVICE. FIRE LINE TO BE SIZED BY SPRINKLER CONTRACTOR. HYDRULIC CALCULATIONS. BACKFLOW PREVENTER TO BE SIZED PER FIRE LINE DESIGN. REFER TO CIVIL DRAWINGS FOR CONTINUATION.
- (M3) SLOANE FIRE DEPARTMENT CONNECTION.
- (M4) 1500 GALLON GREASE INTERCEPTOR.
- (M5) 6" SANITARY SEWER. REFER TO CIVIL DRAWINGS FOR CONTINUATION.
- (M6) 6" STORM DRAIN. REFER TO CIVIL DRAWINGS FOR CONTINUATION.
- (M7) GAS METER. REQUIRED DELIVERY PRESSURE APPROX. 4 INCHES AT DOWNSTREAM SIDE OF METER. REFER TO P201. TOTAL GAS DELIVERY 1,253 CFH.
- (M8) 4" SANITARY SEWER UP TO FLOOR DRAIN. JOSAM "LEVELEEZ 39000" WITH TOP LOCKING HINGED COVER AND 2" VENT UP TO SCREEN WALL.
- (M9) CO2 TANK. PROVIDE SURFACE MOUNTED RECHARGE BOX ON OUTSIDE OF FENCE/CHAIN LINK TO CARBONATORS AT BAG IN BOX IN KITCHEN.

**ELECTRICAL SITE NOTES:**

- (E1) ELECTRICAL UTILITY COMPANY PAD MOUNTED TRANSFORMER. VERIFY EXACT LOCATION AND REQUIREMENTS WITH ELECTRIC COMPANY.
- (E2) (3) 4" PVC E.C. WITH PULL WIRE FOR UNDERGROUND ELECTRICAL SERVICE ENTRANCE (PRIMARY). VERIFY EXACT ROUTING AND REQUIREMENTS WITH ELECTRIC UTILITY COMPANY.
- (E3) 2"x4"x8" FIRE RESISTANT PLYWOOD TELEPHONE TERM. BOARD. EXTEND ON 1" E.C. WITH PULL WIRE FROM TELEPHONE D-MARK LOCATION TO PLYWOOD TELEPHONE TERMINATION HOUSE. SEE OFFICE-POWER DETAIL ON SHEET E201 FOR LOCATION AND REQUIREMENTS.
- (E4) NOT USED
- (E5) UNDERGROUND ELECTRICAL SERVICE ENTRANCE (SECONDARY). SEE RISER DIAGRAM FOR FEEDER REQUIREMENTS AND SHEET E201.
- (E6) ELECTRICAL UTILITY COMPANY METER AND CT CABINET. VERIFY EXACT LOCATION AND REQUIREMENTS WITH ELECTRIC UTILITY COMPANY.
- (E7) NOT USED
- (E8) PROVIDE ONE 2" PVC E.C. WITH PULL WIRE FOR UNDERGROUND TELEPHONE SERVICE ENTRANCE TO D-MARK. SEE SHEET E111 FOR LOCATION OF D-MARK. REFER TO CIVIL FOR CONTINUATION. VERIFY EXACT ROUTING AND REQUIREMENTS WITH TELEPHONE COMPANY.
- (E9) PROVIDE ONE 2" PVC E.C. WITH PULL WIRE FOR UNDERGROUND CABLE/TY SERVICE ENTRANCE TO D-MARK. SEE SHEET E111 FOR LOCATION OF D-MARK. REFER TO CIVIL FOR CONTINUATION. VERIFY EXACT ROUTING AND REQUIREMENTS WITH TELEPHONE COMPANY.



CONFIRM REBAR AND FOOTING REQUIREMENTS WITH STRUCTURAL DRAWINGS. DETAIL IS SCHEMATIC ONLY AND VARIES SITE BY SITE.

SITE LIGHTING FIXTURES:			
NO.	FIXTURE TYPE	MANUFACTURER	POLE MODEL NUMBER
SA	NEW R.P.S. PARABOLIC LOT LIGHTS DISTRIBUTION TYPE B ON 30'-0" POLE. CONFIRM POLE MATERIAL, COLOR, AND TYPE PRIOR TO LIGHTING FIXTURE.	WLS LIGHTING	WLS-M-5-400-MBR-CT-V1-BR2-NO
			37'-0" ROUND STEEL POLE. SUBMITTALS TO MEET CMA REQUIREMENTS.

**DAVID GRAHAM BRYANT**  
ARCHITECT

3200 Main Street  
Suite 13  
Dallas, Texas 75226

MEP ENGINEER  
**Lumina & Company**  
1714 Ross Street, Suite 100  
Dallas, TX 75201

STRUCTURAL  
Ronald A. Roberts and Assoc.  
1420 W. Mockingbird Lane  
Dallas, TX 75247

CIVIL  
Carter & Slope, Inc.  
6310 Peabody Road  
Macon, Georgia 31210

**Chil's 12.5 Bonnaroo II**  
510 Commerce Blvd.  
Intersection of Veterans Memorial Pkwy.  
and Brannen St.  
Statesboro, Georgia 30458

OWNER  
Bonnaroo Restaurant II  
Group, L.P.  
125 S. Hillside Ave.  
Suite H  
Athens, GA 30605

OWNER'S CONSULTANT  
TIG Development Co., LLC  
3410 Haddock Rd.  
Ste. 136  
Carrollton, TX 75006

CONTRACTOR SHALL VERIFY ALL CONDITIONS AND CONDITIONS ON ALL WORK. CONTRACTOR SHALL VERIFY ALL CONDITIONS AND CONDITIONS ON ALL WORK. CONTRACTOR SHALL VERIFY ALL CONDITIONS AND CONDITIONS ON ALL WORK.



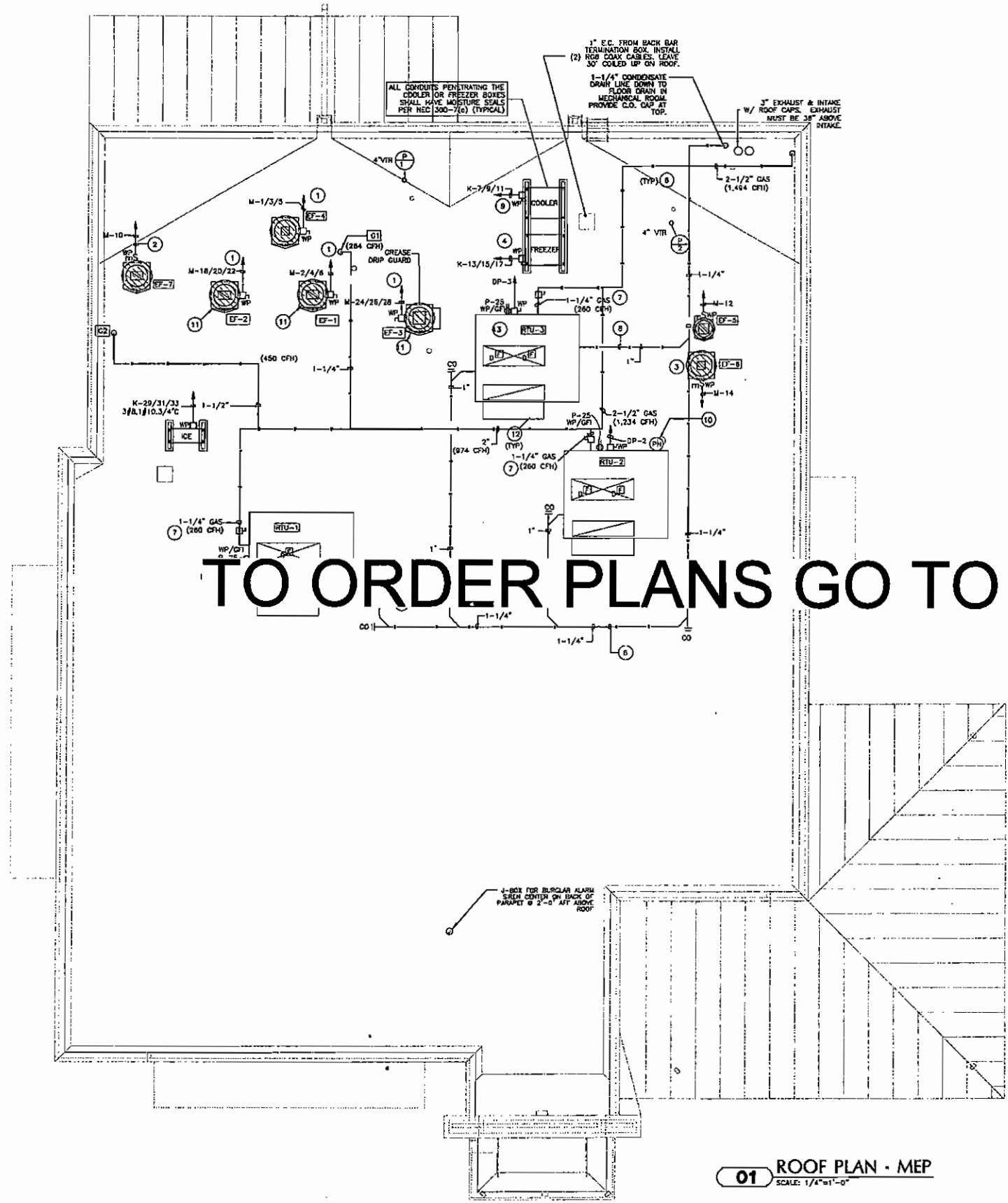
KEYPLAN

ISSUE  
Form Documents 04/09/07

Construction Set  
B&K Project No. 2006-03  
Drawn By: 003  
Checked By: 003  
Date: 04/09/07

SITE PLAN  
MECHANICAL AND ELECTRICAL  
Sheet No. MEP1

COPYRIGHT 2006 © BRYANT BURTON KUPCUNAS ARCHITECTS INC. THESE DRAWINGS AND SPECIFICATIONS ARE INSTRUMENTS OF SERVICE AND SHALL REMAIN THE PROPERTY OF THE ARCHITECT. THEY ARE NOT TO BE USED ON OTHER PROJECTS OR EXTENSIONS TO THIS PROJECT WITHOUT PRIOR WRITTEN AGREEMENT WITH THE ARCHITECT.



TO ORDER PLANS GO TO [idiline.com](http://idiline.com)

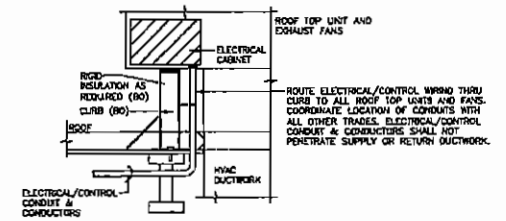
**01** ROOF PLAN - MEP  
SCALE: 1/4"=1'-0"

**GENERAL NOTES:**

- A. ALL VENT STACKS TO EXTEND 12" ABOVE NEAREST PARAPET OR VERTICAL SURFACE AND INSTALLED 10'-0" MINIMUM FROM ANY OUTSIDE AIR INTAKE.
- B. REFER TO ARCHITECTURAL DRAWING A141 FOR CURBS AND PENETRATIONS.
- C. ALL FANS, CONDENSING UNITS AND RTU'S TO BE LABELED WITH 4" STICK ON LETTERS/NUMBERS OR PAINTED VIA 4" STENCILS.
- D. PROVIDE CLEANOUTS ON CONDENSATE PIPING AT EVERY 90 DEGREE BEND AND AT TURN DOWN OF PIPING THROUGH ROOF OF MECHANICAL ROOM.
- E. ALL WIRING (ELECTRICAL AND CONTROL) TO ROUTE THROUGH CURBS. DO NOT RUN THROUGH DUCTWORK OR PENETRATE ROOF. COORDINATE WITH OTHER TRADES. REFER TO DETAIL 02 THIS SHEET.
- F. TYPE I GREASE EXHAUST OUTLETS THAT TERMINATE ABOVE THE ROOF SHALL HAVE THE DISCHARGE OPENING LOCATED NOT LESS THAN 40 INCHES ABOVE THE ROOF.

**KEYED NOTES:**

- 1 RUN 3#12, 1#12 G., 1/2" C. TO VFD IN INTELLI-HOOD CONTROL PANEL (205V, 3ø). MOUNT ELECTRICAL BOX TO FRAME; NO ROOF PENETRATIONS. NO EXHAUST FAN FEEDERS SHALL BE RUN IN SAME CONDUIT.
- 2 RUN 2#12, 1#12 O., 1/2" C. TO STARTER IN CAPTURE JET CONTROL PANEL (120V, 1ø).
- 3 PROVIDE INTERLOCK CONTROL WIRING FOR EXHAUST FAN AND DISHMACHINE. COORDINATE EXACT REQUIREMENTS WITH MANUFACTURER.
- 4 #10, 1#10 G., 3/4" C. TO 3P 30A C/B.
- 5 3#12, 1#12G., 1/2" C. TO 2P 20A C/B.
- 6 REFER TO SHEET 03/P202 FOR GAS AND CONDENSATE PIPING SUPPORT ON ROOF.
- 7 REFER TO SHEET 04/P202 FOR GAS PIPING TO RTU.
- 8 REFER TO SHEET 09/P202 FOR CONDENSATE FROM RTU.
- 9 3#10, 1#10 G., 3/4" C. TO 3P 30A C/B.
- 10 PHOTOCELL/WIRING POWER UP INSIDE RTU #2. STRAP CONDUIT TO INSTALL PHOTOCELL.
- 12 CODE REQUIRED 10' MINIMUM CLEARANCE FROM EXHAUST OUTLETS TO FRESH AIR INTAKE OF EQUIPMENT OR HOODS.
- 13 BEFORE INSTALLING THE KITCHEN ROOF TOP UNIT, RTU-3, CONTRACTOR SHALL FIELD VERIFY IT IS THE UNIT WITH THE STAINLESS STEEL HEAT EXCHANGER.



**02** WIRE ROUTING DETAIL  
NO SCALE

**DAVID GRAHAM BRYANT**  
ARCHITECT

3200 Main Street  
Suite 13  
Dallas, Texas 75226

MEP ENGINEER  
**Luzon & Company**  
Consulting Engineers  
1420 W. Mockingbird Lane  
Dallas, Texas 75247  
Tel. 469.287.2100 Fax. 469.287.2400

STRUCTURAL  
Ronald A. Roberts and Assoc.  
1420 W. Mockingbird Lane  
Dallas, TX 75247

CIVIL  
Carter & Sloope, Inc.  
6310 Peake Road  
Macon, Georgia 31210

**Chil's**  
12.5 Bonnaroo II  
510 Commerce Blvd.  
Intersection of Veterans Memorial Pkwy.  
and Brannen St.  
Statesboro, Georgia 30458

OWNER  
Bonnaroo Restaurant II  
Group, LP  
125 S. McJeege Ave.  
Suite H  
Athens, GA 30605

OWNER'S CONSULTANT  
TIG Development Co, LLC  
3410 Midcourt Rd.  
Ste. 136  
Carrollton, TX 75006

CONTRACTOR SHALL VERIFY ALL ROOF TOP UNITS AND EXHAUST FANS ARE INSTALLED AS SHOWN ON THIS DRAWING. CONTRACTOR SHALL VERIFY ALL ROOF TOP UNITS AND EXHAUST FANS ARE INSTALLED AS SHOWN ON THIS DRAWING.



KEYPLAN

ISSUE  
Permit Documents 02/28/07

Construction Set

BBK Project No. 2006-02

Drawn By: 003

Checked By: 003

Date: 04/09/07

ROOF PLAN  
MECHANICAL AND ELECTRICAL

Sheet No: **MEP2**