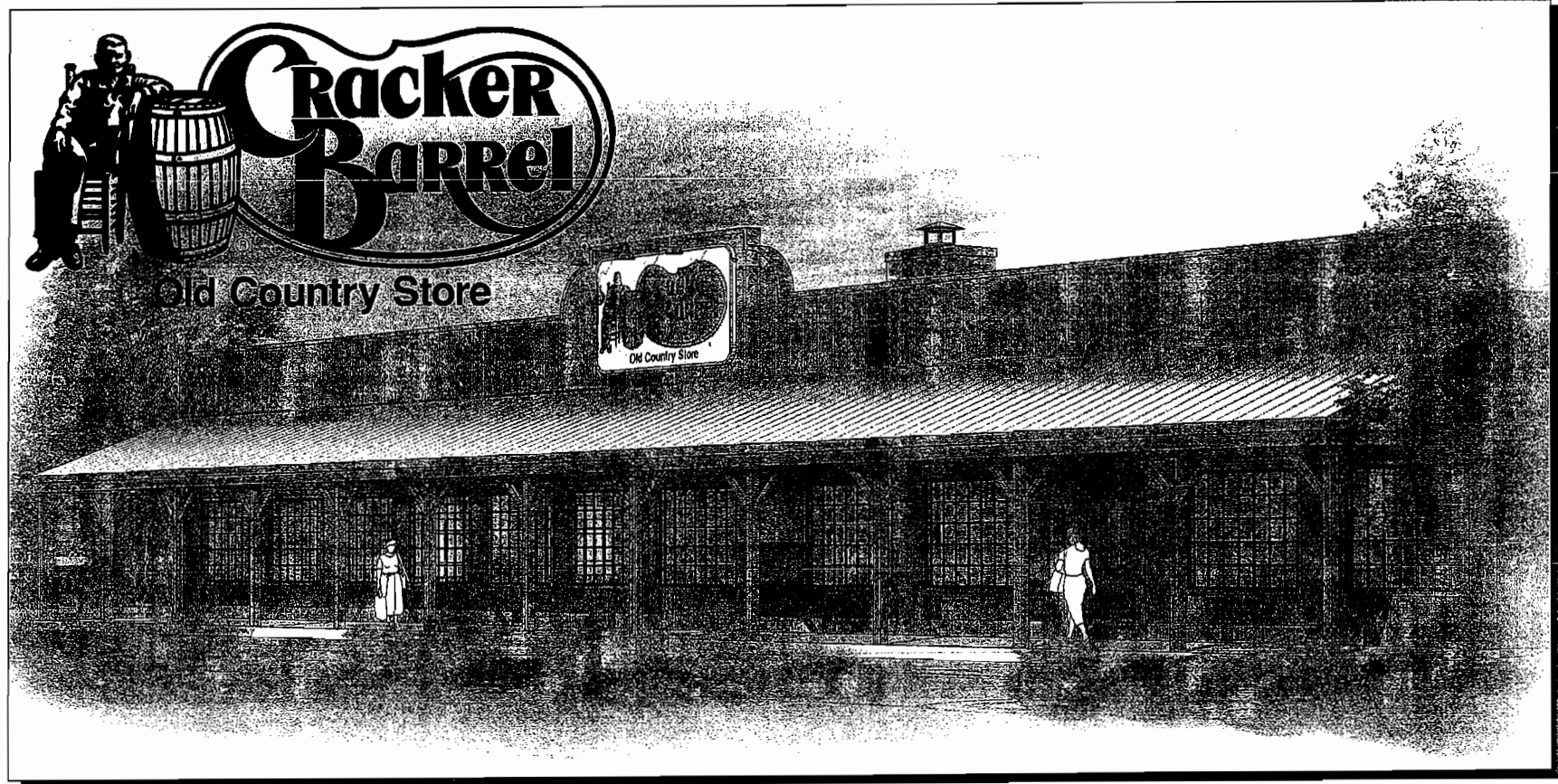


To Order Plans, Go To LDLINE.COM



CRACKER BARREL OLD COUNTRY STORE, INC.

INDEX TO DRAWINGS

- T-1 TITLE & INDEX SHEET
- C-1 SITE LAYOUT PLAN
- C-2 SITE GRADING PLAN
- C-2.1 SWPPP
- C-3 SITE UTILITY PLAN
- C-4 SITE DETAILS
- C-5 SITE DETAILS
- C-6 SITE DETAILS
- C-6 SITE SURVEY
- LP-1 LANDSCAPE PLAN
- LP-2 IRRIGATION PLAN
- LP-3 STANDARD DETAILS
- LP-4 SLEEVING PLAN
- S-1 FOUNDATION PLAN
- S-2 ROOF FRAMING PLAN
- S-3 STRUCTURAL DETAILS
- S-4 STRUCTURAL DETAILS
- GB-1 GIFT SHOP PLAN
- FB-1 ACCESSIBILITY & FIRE SAFETY PLAN

- A-1 DEPICTIVE FLOOR PLAN
- A-2 DIMENSIONED FLOOR PLAN
- A-3 REFLECTED CEILING PLAN
- A-4 EXTERIOR ELEVATIONS
- A-4.1 EXTERIOR ELEVATIONS
- A-5 BUILDING SECTIONS & DETAILS
- A-6 BUILDING SECTIONS & DETAILS
- A-7 ENLARGED FIREPLACE PLAN, ELEVATION, & SECTIONS
- A-8 INTERIOR ELEVATIONS
- A-9 FINISH SCHEDULE, NOTES, & DETAILS
- A-10 ENLARGED TOILET ROOMS PLANS, ELEVATIONS, & SCHEDULES
- A-11 ENLARGED OFFICES PLAN, ELEVATIONS, & DETAILS
- A-12 DOOR & WINDOW SCHEDULES & DETAILS
- A-13 DOOR DETAILS
- A-14 FLOOR FINISH PLAN
- A-15 ROOF PLAN
- A-16 ADA/EMERGENCY SIGNAGE PLAN
- A-17 MISCELLANEOUS STEEL DETAILS
- EQ-1 EQUIPMENT FLOOR PLAN
- EQ-2 EQUIPMENT SCHEDULE
- EQ-3 KITCHEN ELEVATIONS
- EQ-4 KITCHEN ELEVATIONS
- EQ-5 LOUNGE ELEVATIONS
- M-1 HVAC SCHEDULES
- M-2 HVAC FLOOR PLAN
- M-3 HVAC SECTIONS & DETAILS
- M-4 HVAC SECTIONS & DETAILS
- M-5 REFRIGERATION SYSTEM DETAILS
- P-1 BELOW SLAB PLUMBING FLOOR PLAN
- P-2 ABOVE SLAB PLUMBING FLOOR PLAN
- P-3 ABOVE SLAB PLUMBING, GAS, & CONDENSATE PLAN
- P-4 PLUMBING ROUGH IN FLOOR PLAN
- P-5 PLUMBING RISERS AND DETAILS
- P-6 PLUMBING SCHEDULES AND DETAILS
- P-7 PLUMBING DETAILS

- FP-1 FIRE PROTECTION FLOOR PLAN
- E-1 ELECTRICAL SCHEDULES
- E-1a ELECTRICAL PANEL BOARD SCHEDULES
- E-2 LIGHTING FLOOR PLAN
- E-3 POWER FLOOR PLAN
- E-3a LARGE SCALE KITCHEN POWER PLAN
- E-4 ELECTRICAL ROUGH IN FLOOR PLAN
- E-5 SECURITY SYSTEM FLOOR PLAN
- E-5a TELEPHONE & COMPUTER SYSTEM FLOOR PLAN
- E-6 HVAC & REFRIGERATION SYSTEMS ELECTRICAL PLAN
- E-7 ELECTRICAL SECTIONS AND DETAILS
- E-8 ELECTRICAL DETAILS
- E-9 ELECTRICAL SCHEDULES AND LEGENDS
- E-10 SYSTEMS FLOOR PLAN
- E-11 ELECTRICAL FIRE PROTECTION PLAN
- ES-1 PHOTOMETRIC SITE PLAN

PLUMBING FIXTURE CALCULATIONS			
CALCULATIONS ARE BASED ON TABLE 2102.1 OF THE 2003 INTERNATIONAL BUILDING CODE			
THE TOTAL OCCUPANCY LOAD IS 274.			
PER SECTION 2102.3, 50 PERCENT OF THE TOTAL LOAD SHALL BE USED FOR THE NUMBER OF OCCUPANTS OF EACH SEX, WHICH EQUALS 140.			
TYPE OF FIXTURE	REQUIRED	PROVIDED	
MALE WATER CLOSETS	1 PER 75	2	9
FEMALE WATER CLOSETS	1 PER 75	2	4
MALE LAVATORIES	1 PER 200	1	2
FEMALE LAVATORIES	1 PER 200	1	2
BATHUBS OR SHOWERS	NONE	NONE	NONE
DRINKING FOUNTAINS	1 PER 500	1	2
PER SECTION 1109.2.1, A UNISEX TOILET IS NOT REQUIRED SINCE THE REQUIRED TOTAL NUMBER OF WATER CLOSETS (4) IS LESS THAN 6.			

NOTE:
THE GENERAL CONTRACTOR SHALL CONFIRM THAT CRACKER BARREL HAS OBTAINED A "VESSEL REGISTRATION" FOR EACH STEAM KETTLE FOR ANY OTHER PRESSURE VESSEL EXCEEDING 200,000 BTUS PRIOR TO OBTAINING THE CERTIFICATE OF OCCUPANCY FOR THE RESTAURANT.

BUILDING INFORMATION:	
BUILDING CODES	
-2008 INTERNATIONAL BUILDING CODE	
-2008 INTERNATIONAL PLUMBING CODE	
-2008 INTERNATIONAL MECHANICAL CODE	
-2008 INTERNATIONAL FIRE CODE	
-2008 INTERNATIONAL FUEL GAS CODE	
-2008 NATIONAL ELECTRICAL CODE	
-2004 NFPA 101 LIFE SAFETY CODE	
-GEORGIA ACCESSIBILITY CODE	
OCCUPANCY GROUP	A-2 SMALL ASSEMBLY NO FIRE SEPARATION REQUIRED
CONSTRUCTION TYPE	TYPE V-B, FULLY SPRINKLERED NO REQUIREMENTS FOR FIRE RESISTANCE
FLOOR AREA:	
CONDITIONED SPACE	10,101 S.F.
COVERED PORCH	1,480 S.F.
TOTAL FOOTPRINT	11,581 S.F.
BUILDING HEIGHT - 1 STORY	
TOP OF ROOF	13'-0"
TOP OF HIGHEST PARAPET	23'-0"
BUILDING AND PORCH - FULLY SPRINKLERED	
ALLOWABLE AREA PER TABLE 603	6,000 S.F.
ALLOWABLE AREA INCREASED PER 603 FOR SPRINKLER	6,000 S.F. x 200% = 12,000 S.F. > 11,581 S.F.

OCCUPANT LOAD CALCULATIONS:			
SPACE NAME	AREA S.F.	OCCUPANT FACTOR	OCCUPANT LOAD
CASHIER & RETAIL	2,152	30	72
DINING ROOM	2,614	15 (ACTUAL SEATS 207)	174
STORAGE 'A'	45		
STORAGE 'B'	INC. W/ KITCHEN		
STORAGE 'C'	624		
FREEZER/COOLER	376		
CLOSET 'A'	INC. W/ OFF. 'A'		
CLOSET 'B'	8		
STORAGE TOTAL	1,053	300	4
OFFICE 'A'	46		
OFFICE 'B'	49		
LOUNGE 'A'	108		
LOUNGE 'B'	127		
KITCHEN/DISHWASH	2,326		
VESTIBULE 'B'	105		
VESTIBULE 'C'	57		
VESTIBULE 'D'	INC. W/ KITCHEN		
KITCHEN TOTAL	2,868	100	29
ENTRY	61		
VESTIBULE 'A'	109		
WOMEN	175		
MEN	147		
EMPLOYEE WOMEN	41		
EMPLOYEE MEN	51		
UTILITY	105		
TOTAL	689	N/A	N/A
TOTAL OCCUPANT LOAD PER OCCUPANT FACTOR			215
TOTAL OCCUPANT LOAD - ACTUAL SEAT COUNT			312

CONTRACTOR NOTE:
THE GENERAL CONTRACTOR SHALL INSTALL THE OWNER PROVIDED POST AND MAILBOX AT THE LOCATION SPECIFIED BY THE STORE OPENER.

GENERAL NOTES:

- GENERAL CONTRACTOR SHALL BE RESPONSIBLE FOR COORDINATION OF CONSTRUCTION DOCUMENTS AND SHOP DRAWINGS PROVIDED BY OTHERS. GENERAL CONTRACTOR SHALL NOTIFY DESIGN AND ENGINEERING, INC. OR A CRACKER BARREL PROJECT MANAGER IMMEDIATELY OF ANY DISCREPANCIES IN ANY PLAN, SHOP DRAWINGS AND/OR SPECIFICATIONS. SHOULD A DISCREPANCY BE FOUND, DO NOT PROCEED UNTIL CLARIFICATIONS HAVE BEEN MADE BY THE PROPER OWNER REPRESENTATIVE.
- ALL WORK SHALL CONFORM WITH THE STATE FIRE PREVENTION AND BUILDING CODE, AND ANY LOCAL GOVERNING CODES AND ORDINANCES.
- ALL WORKMANSHIP SHALL BE PERFORMED TO THE HIGHEST INDUSTRY STANDARDS.
- ALL WORK SHALL COMPLY WITH THE FEDERAL ADAAS REQUIREMENTS.
- GENERAL CONTRACTOR SHALL VERIFY THAT ALL PRODUCTS PROVIDED AND INSTALLED MEET MANUFACTURERS RECOMMENDATIONS AND ALL STATE AND LOCAL CODES, ORDINANCES, AND STRUCTURAL LOADINGS REQUIREMENTS. REFER TO SHEET S-2 FOR SEISMIC AND WIND LOADS.
- THESE PLANS, PREPARED BY DESIGN AND ENGINEERING, INC. DO NOT EXTEND TO OR INCLUDE SYSTEMS PERTAINING TO THE SAFETY OF THE CONSTRUCTION CONTRACTOR OR ITS EMPLOYEES, AGENTS OR REPRESENTATIVES IN THE PERFORMANCE OF THE WORK. THE SEAL OF DESIGN AND ENGINEERING, P.C. IS REGISTERED PROFESSIONALS HEREON DOES NOT EXTEND TO ANY SUCH SAFETY SYSTEMS THAT MAY NOW OR HEREAFTER BE INCORPORATED INTO THESE PLANS. THE CONSTRUCTION CONTRACTOR SHALL PREPARE OR OBTAIN THE APPROPRIATE SAFETY SYSTEMS WHICH MAY BE REQUIRED BY U.S. OCCUPATIONAL SAFETY AND HEALTH ADMINISTRATION (OSHA) AND/OR LOCAL REGULATIONS.

CONSTRUCTION DOCUMENTS NOTE:

PLANS STAMPED BID SET SHALL BE USED FOR BIDDING PURPOSES ONLY. CHANGES MAY OCCUR BETWEEN THE TIME PLANS ARE RELEASED FOR BID AND RELEASED FOR CONSTRUCTION. ANY CONSTRUCTION ACTIVITY COMMENCING PRIOR TO THE GENERAL CONTRACTOR OBTAINING AN AUTHORIZED SET OF CONSTRUCTION PLANS WILL BE AT HIS SOLE RISK AND EXPENSE.

GENERAL CONTRACTOR SHALL NOT USE THESE DRAWINGS FOR CONSTRUCTION PURPOSES UNLESS THEY HAVE BEEN STAMPED, DATED AND SIGNED BY DESIGN AND ENGINEERING, INC. AND RELEASED AS CONSTRUCTION DOCUMENTS.

CONSTRUCTION DOCUMENTS SHALL INCLUDE BUT NOT BE LIMITED TO:

- ARCHITECTURAL, STRUCTURAL, MFE AND CIVIL PLANS
- SPECIFICATIONS
- SHOP DRAWINGS OF OWNER SUPPLIED ITEMS
- ADDENDUMS
- CONTRACTS
- GEOTECHNICAL REPORT
- LANDSCAPE, IRRIGATION AND SLEEVING PLANS
- SURVEY
- NOTES AND COMMENTS FROM PRECONSTRUCTION MEETINGS

BY: _____ DATE: _____

CRACKER BARREL
OLD COUNTRY STORE
1-085 & FRIENDSHIP ROAD
BURLINGAME, CA

Cracker Barrel
Old Country Store, Inc. P.O. Box 787
Hartmann Drive, Lebanon, TN. 37087



DESIGN AND ENGINEERING
ARCHITECTS, STRUCTURAL AND CIVIL ENGINEERS
5105 Maryland Way
Suite 200
Birmingham, TN 37627
615-370-1779
615-370-9179
fax: 370-9188
www.deldilinc.com

TITLE AND INDEX SHEET

INITIAL DATE: MAY 14, 2007
REVISED DATE: _____
REVISED BY: _____
CITY COMMENTS 08.24.07
CITY COMMENTS 09.22.07
11-180



T-1
CB 207-06