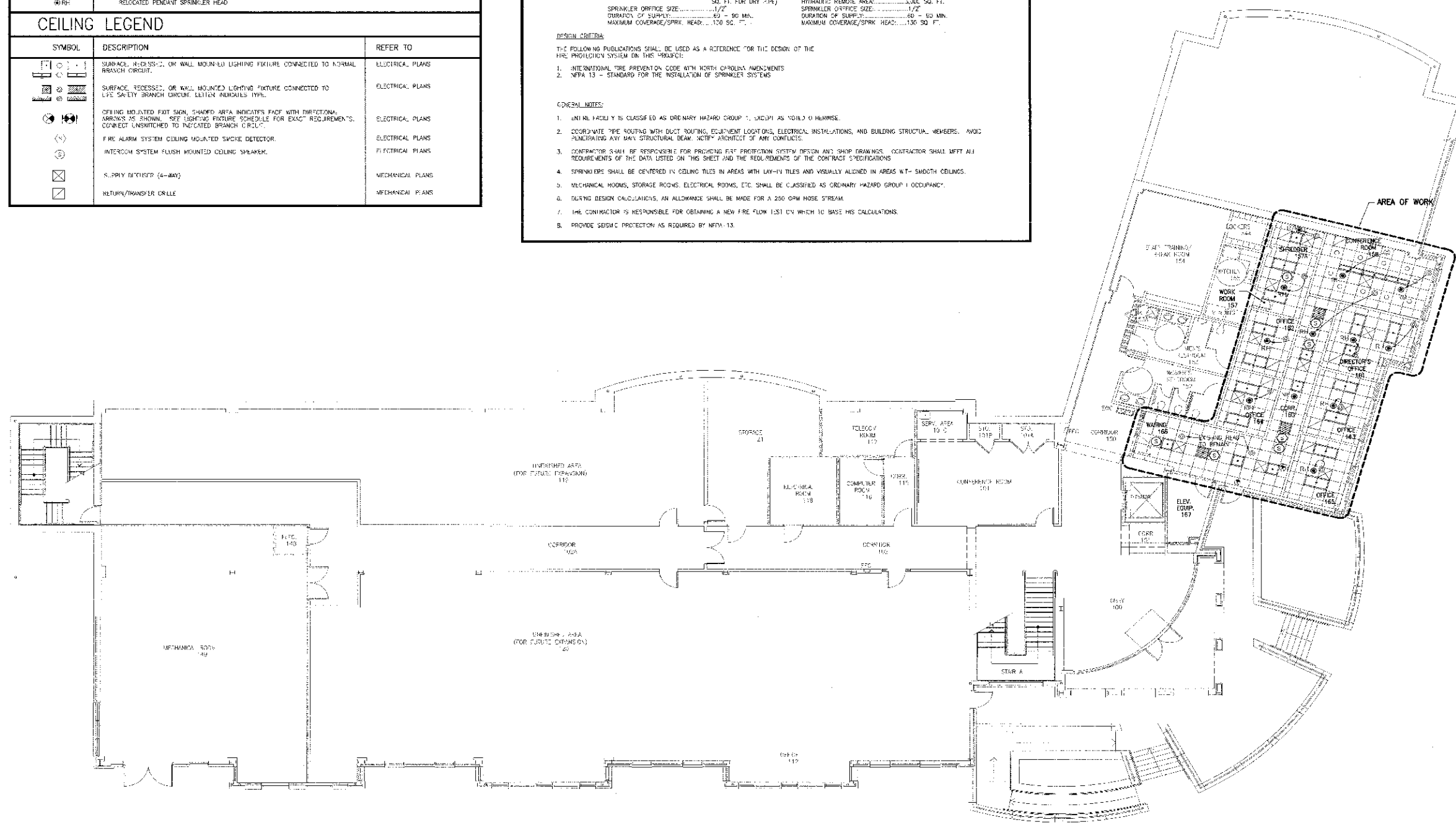


FIRE PROTECTION LEGEND		
SYMBOL	DESCRIPTION	
⊙	EXISTING PENDANT SPRINKLER HEAD	
⊙NH	NEW PENDANT SPRINKLER HEAD	
⊙RH	RELOCATED PENDANT SPRINKLER HEAD	
CEILING LEGEND		
SYMBOL	DESCRIPTION	REFER TO
	SURFACE, RECESSED, OR WALL MOUNTED LIGHTING FIXTURE CONNECTED TO NORMAL BRANCH CIRCUIT.	ELECTRICAL PLANS
	SURFACE, RECESSED, OR WALL MOUNTED LIGHTING FIXTURE CONNECTED TO LIFE SAFETY BRANCH CIRCUIT. LETTER INDICATES TYPE.	ELECTRICAL PLANS
	CEILING MOUNTED EXIT SIGN. SHADOW AREA INDICATES FACE WITH ILLUMINATION. ARROWS AS SHOWN. SEE LIGHTING FIXTURE SCHEDULE FOR EXACT REQUIREMENTS. CONNECT UNSWITCHED TO INDICATED BRANCH CIRCUIT.	ELECTRICAL PLANS
	FIRE ALARM SYSTEM CEILING MOUNTED SMOKE DETECTOR.	ELECTRICAL PLANS
	INTERCOM SYSTEM FLUSH MOUNTED CEILING SPEAKER.	ELECTRICAL PLANS
	SUPPLY REGISTER (4-WAY)	MEDICAL PLANS
	RETURN/TRANSFER GRILLE	MEDICAL PLANS

FIRE PROTECTION NOTES	
ORDINARY HAZARD GROUP 1 OCCUPANCY DESIGN DENSITY: 0.15 GPM/SQ. FT. HYDRAULIC REMOTE AREA: 3,000 SQ. FT. (1,050 SQ. FT. FOR DRY PIPE) SPRINKLER ORifice SIZE: 1/2" DURATION OF SUPPLY: 60 - 90 MIN. MAXIMUM COVERAGE/SPRINK. HEAD: 170 SQ. FT.	ORDINARY HAZARD GROUP 1 OCCUPANCY FOR OPEN AREAS (GREATER THAN 5000 SQ. FT.) DESIGN DENSITY: 0.12 GPM/SQ. FT. HYDRAULIC REMOTE AREA: 3,000 SQ. FT. SPRINKLER ORifice SIZE: 1/2" DURATION OF SUPPLY: 60 - 90 MIN. MAXIMUM COVERAGE/SPRINK. HEAD: 170 SQ. FT.
DESIGN CRITERIA THE FOLLOWING PUBLICATIONS SHALL BE USED AS A REFERENCE FOR THE DESIGN OF THE FIRE PROTECTION SYSTEM ON THIS PROJECT: 1. INTERNATIONAL FIRE PREVENTION CODE WITH NORTH CAROLINA AMENDMENTS 2. NFPA 13 - STANDARD FOR THE INSTALLATION OF SPRINKLER SYSTEMS	
GENERAL NOTES 1. ENTIRE FACILITY IS CLASSIFIED AS ORDINARY HAZARD GROUP 1, UNLESS AS NOTED OTHERWISE. 2. COORDINATE THE ROUTING WITH DUCT ROUTING, EQUIPMENT LOCATION, ELECTRICAL INSTALLATIONS, AND BUILDING STRUCTURAL MEMBERS. AVOID PENETRATING ANY BAY STRUCTURAL BEAM. NOTE: AVOIDANCE OF ANY CONFLICTS. 3. CONTRACTOR SHALL BE RESPONSIBLE FOR PROVIDING FIRE PROTECTION SYSTEM DESIGN AND SHOP DRAWINGS. CONTRACTOR SHALL MEET ALL REQUIREMENTS OF THE DATA LISTED ON THIS SHEET AND THE REQUIREMENTS OF THE CONTRACT SPECIFICATIONS. 4. SPRINKLERS SHALL BE CENTERED IN CEILING TILES IN AREAS WITH LAY-IN TILES AND VISUALLY ALIGNED IN AREAS WITH SMOOTH CEILING. 5. MECHANICAL ROOMS, STORAGE ROOMS, ELECTRICAL ROOMS, ETC. SHALL BE CLASSIFIED AS ORDINARY HAZARD GROUP 1 OCCUPANCY. 6. DURING DESIGN CALCULATIONS, AN ALLOWANCE SHALL BE MADE FOR A 250 GPM NOSE STREAM. 7. THE CONTRACTOR IS RESPONSIBLE FOR OBTAINING A NEW FIRE FLOW TEST ON WHICH TO BASE HIS CALCULATIONS. 8. PROVIDE SEISMIC PROTECTION AS REQUIRED BY NFPA-13.	

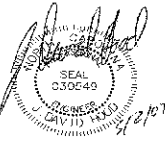


1 FIRST FLOOR FIRE PROTECTION  
1/8" = 1'-0"

FIRE RATED PARTITION LEGEND	
	EXISTING 1 HR. FIRE RATED PARTITION
	EXISTING 2 HR. FIRE RATED PARTITION
	NEW/MODIFY 2 HR. FIRE RATED PARTITION



Design & Management Solutions for the Built Environment  
5015 TOWER POINT DRIVE  
CHARLOTTE, NC 28227  
NSH PROJECT NO. 07001  
WWW.HSH.COM  
P 704.384.3300  
F 704.384.2855  
COPYRIGHT © 2007 HARRELL, SALTRICK & HOPPER, PC



BROCKER HEALTH CENTER - SHELL SPACE UPFIT

9201 UNIVERSITY CITY BLVD  
CHARLOTTE, NC 28223-0001  
CODE: 40226 ITEM: 302

CONSTRUCTION DOCUMENTS

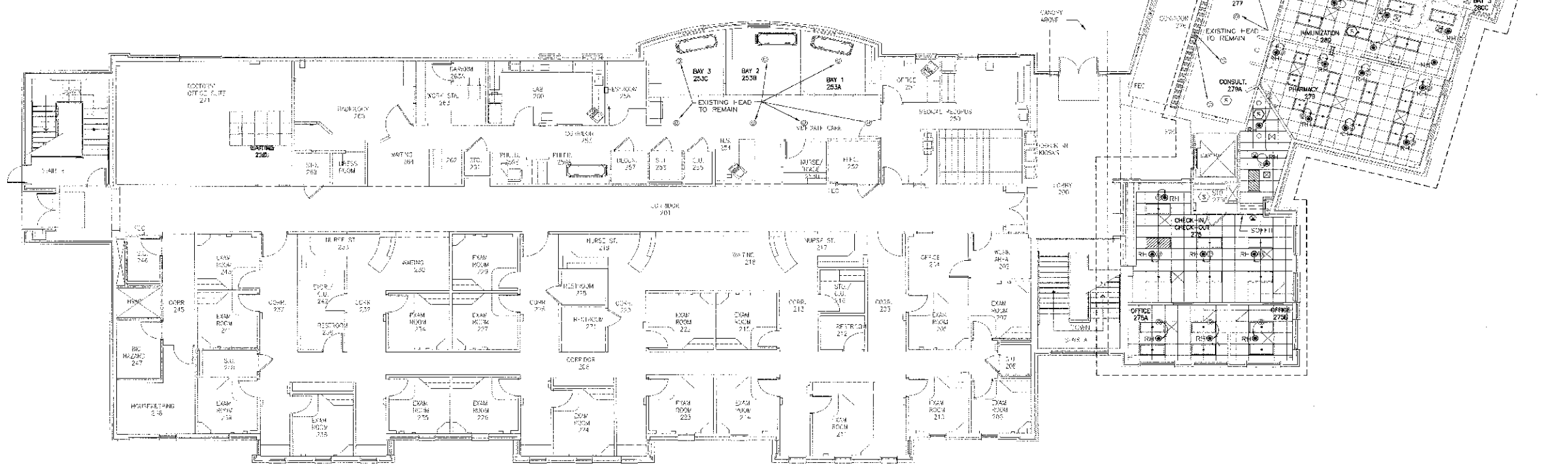
REVISIONS		
NO.	DESCRIPTION	DATE

SHEET INFORMATION	
DATE	MAY 2, 2007
JOB NUMBER	07001
DRAWN	JDM
CHECKED	JDM
APPROVED	LEH

FIRE PROTECTION  
FIRST FLOOR  
PLAN

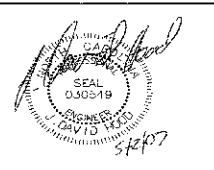
FP-101

FIRE PROTECTION LEGEND		
SYMBOL	DESCRIPTION	
⊙	EXISTING PENDANT SPRINKLER HEAD	
⊙NH	NEW PENDANT SPRINKLER HEAD	
⊙NH	RELOCATED PENDANT SPRINKLER HEAD	
CEILING LEGEND		
SYMBOL	DESCRIPTION	REFER TO
⊙	SURFACE, RECESSED, OR WALL MOUNTED LIGHTING FIXTURE CONNECTED TO NORMAL BRANCH CIRCUIT.	ELECTRICAL PLANS
⊙	SURFACE, RECESSED, OR WALL MOUNTED LIGHTING FIXTURE CONNECTED TO LIFE SAFETY BRANCH CIRCUIT. LETTER INDICATES TYPE.	ELECTRICAL PLANS
⊙	CEILING MOUNTED EXIT SIGN. S ADD ARCA INDICATES FACE WITH DIRECTIONAL ARROWS AS SHOWN. SFF LIGHTING FIXTURE SCHEDULE FOR EXACT DIMENSIONS. CONNECT LIGHTWITCH TO INDICATED BRANCH CIRCUIT.	ELECTRICAL PLANS
⊙	FIRE ALARM SYSTEM CEILING MOUNTED SMOKE DETECTOR.	ELECTRICAL PLANS
⊙	INTERCOM SYSTEM FLUSH MOUNTED DRIVING SPEAKER.	ELECTRICAL PLANS
⊙	SUPPLY DIFFUSER (4-WAY)	MECHANICAL PLANS
⊙	RETURN/TRANSFER GRILLE	MECHANICAL PLANS



1 SECOND FLOOR FIRE PROTECTION  
 1/8" = 1'-0"

FIRE RATED PARTITION LEGEND	
---	EXISTING 1 HR. FIRE RATED PARTITION
---	EXISTING 2 HR. FIRE RATED PARTITION
---	NEW/CMO 2 HR. FIRE RATED PARTITION



**BROCKER HEALTH CENTER - SHELL SPACE UPFIT**

9201 UNIVERSITY CITY BLVD  
 CHARLOTTE, NC 28223-0001  
 CODE: 40226 ITEM: 302

**CONSTRUCTION DOCUMENTS**

REVISIONS		
NO.	DESCRIPTION	DATE

SHEET INFORMATION	
DATE	MAY 2, 2007
JOB NUMBER	07001
DRAWN	JDH
CHECKED	JDH
APPROVED	LEH

**FIRE PROTECTION SECOND FLOOR PLAN**

**FP-102**