

LEGEND	
SYMBOL	DESCRIPTION
	A - 1, 3, 5 ADJACENT TO ARROW INDICATES HOMERUN OF CIRCUITS 1, 3, 5 TO PANEL A. MARKS ACROSS RACEWAY RUNS INDICATE THE NUMBER OF NO. 12 CONDUCTORS UNLESS NOTED OTHERWISE. UNLESS NOTED, NO MARKS INDICATE TWO NO. 12 CONDUCTORS. EQUIPMENT GROUNDING CONDUCTORS ARE NOT SHOWN, IF INDICATED ADJACENT TO OUTLET, NUMERAL AND LOWER CASE LETTER INDICATES CIRCUIT CONNECTION AND SWITCH LEG DESIGNATION RESPECTIVELY. TYPE B OR CAPITAL LETTER B INDICATES LIGHT FIXTURE TYPE, UNLESS NOTED, DIMENSIONS INDICATED IN LEGEND AND ON PLANS ARE TO BOTTOM OF OUTLET OF DEVICES.
	CEILING OUTLET AND FLUORESCENT FIXTURE
	CEILING OUTLET AND FLUORESCENT FIXTURE WITH BATTERY BALLAST
	CEILING AND WALL OUTLET AND INCANDESCENT OR H.I.D. FIXTURE
	OUTLET AND EXIT LIGHT WITH INTEGRAL BATTERY - LETTERS INDICATE FIXTURE TYPE. PROVIDE ARROWS AS INDICATED
	CEILING MOUNTED OR WALL TWO HEAD EMERGENCY INCANDESCENT FIXTURE AS SPECIFIED.
	CEILING OR WALL MOUNTED JUNCTION BOX - CONNECT EQUIPMENT INDICATED
	MOTOR, HORSEPOWER AS INDICATED
	FLOOR JUNCTION BOX
	DUPLEX RECEPTACLE (NEMA 5-20R) - MOUNT 18" AFF. UNO
	DUPLEX RECEPTACLE (20A) - GFCI - MOUNT 4" ABOVE COUNTER TOP
	DUPLEX RECEPTACLE (20A) - MOUNT 4" ABOVE COUNTER TOP
	DOUBLE DUPLEX RECEPTACLE (20A) - MOUNT 18" AFF OR AS INDICATED.
	SPECIAL RECEPTACLE, AS INDICATED ON PLANS
	SINGLE POLE TOGGLE SWITCH - MT. 48" AFF TO TOP OF OUTLET BOX
	600V DIMMER SWITCH
	PANELBOARD, SURFACE MOUNTED, MOUNT 6" AFF TO TOP OF PANEL
	RACEWAY INSTALLED CONCEALED IN WALLS AND/OR ABOVE CEILING
	RACEWAY INSTALLED CONCEALED IN/OR BELOW FLOOR SLAB OR BELOW GRADE
	FLEXIBLE METALLIC RACEWAY
	CONDUIT STUB-UP AND HOMERUN
	CONDUIT UP/CONDUIT DOWN
	CONDUIT TERMINATION, STUB-OUT
	HEAVY-DUTY SAFETY SWITCH, NEMA-1, NON-FUSED, RATING/POLES AS INDICATED
	MOTOR RATED TOGGLE SWITCH
	MAGNETIC MOTOR STARTER
	WALL MOUNTED VOICE OUTLET (4" SQUARE BOX), MOUNT 60" AFF TO TOP OF BOX UNO. EXTEND A 3/4" CONDUIT TO THE ELECTRICAL EQUIPMENT ROOM.
	ELECTRIC DRINKING FOUNTAIN RECEPTACLE
	MOTOR RATED SWITCH WITH OVERLOAD PROTECTION - MT. 48" AFF TO TOP OF BOX UNO
	GFCI DUPLEX RECEPTACLE (20A) MT. 18" AFF IN WEATHERPROOF ENCL. WITH TAYMAG *20510, LEVITON 5997-D, OR PASS 6 SEYMOUR W9010DC COVER
	DRY TYPE TRANSFORMER - 480 V TO 208/120V, 3 PHASE, 4 WIRE.

GENERAL NOTES:

- WHEN CONDUCTOR SIZE IS INDICATED FOR BRANCH CIRCUIT HOME RUN, THE CONDUCTOR SIZE INDICATED SHALL BE USED FOR THE COMPLETE CIRCUIT.
- CIRCUITS WITH GFI RECEPTACLES SHALL HAVE A DEDICATED NEUTRAL CONDUCTOR NOT SHOWN ON PLANS FOR CLARITY.
- SERIES A.I.C. RATING OF CIRCUIT BREAKER COMBINATIONS ARE NOT ACCEPTABLE.
- REFER TO THE APPROPRIATE DRAWINGS FOR THE EXACT LOCATION OF EQUIPMENT INSTALLED UNDER OTHER DIVISIONS REQUIRING ELECTRICAL SERVICE. PROVIDE FINAL CONNECTIONS TO EQUIPMENT.
- ELECTRICAL CONTRACTOR SHALL PROVIDE 1/2" SCALE LAY-OUTS OF THE ELECTRICAL ROOMS PRIOR TO INSTALLATION. COORDINATE WITH OTHER DISCIPLINES. SUBMIT TO ARCHITECT FOR APPROVAL.
- FOR MECHANICAL EQUIPMENT WHERE STARTER AND/OR DISCONNECT ARE NOT PROVIDED BY DIV 16 SEE MECHANICAL DRAWINGS AND SPECIFICATIONS FOR INFORMATION.
- EQUIPMENT GROUNDING CONDUCTORS SHALL BE PROVIDED FOR ALL BRANCH CIRCUITS AND FEEDERS.
- ALL RECEPTACLE OUTLETS FOR WET LOCATION APPLICATIONS SHALL HAVE AN OUTLET HEAVY-DUTY DIE CAST METAL COVER THAT MAINTAINS THE WEATHERPROOF INTEGRITY OF THE OUTLET WITH THE ATTACHMENT PLUG CAP INSERTED OR REMOVED. COVERS FOR THE DEVICE PLATES SHALL BE SELF CLOSING AND SHALL HAVE A LOCKING TAB.

LIGHTING FIXTURE SCHEDULE					
TYPE	DESCRIPTION	LAMP	BALLAST	MOUNTING	NOTES
A	2' x 4' SURFACE FLUORESCENT METALUX 2M-332A-120-E81 OR EQUAL	3-F32T8SPK35	ELECTRONIC	SURFACE	1, 2
B	4' TWO LAMP STRIP FLUORESCENT METALUX 5S-232-120V-E818 OR EQUAL	2-F32T8SPK35	ELECTRONIC	SURFACE	1
C	RECESSED DOWNLIGHT PORTFOLD HD6-6100-L1 OR EQUAL	100W/19	NONE	RECESSED	1
D	RECESSED DOWNLIGHT PORTFOLD CG032E-6000L1 OR EQUAL	26W TRIPLE 4-PIN	ELECTRONIC	RECESSED	1
E	CANOPY LIGHT LUMARK MHPN-150N-120V-L1 OR EQUAL	150W/4H	NPF	SURFACE	1

LIGHT FIXTURE SCHEDULE NOTES

- ALL LIGHTING FIXTURES SHALL BE LABELED FOR INSTALLATION IN DAMP LOCATIONS AND CONTAIN LOW TEMPERATURE RATED BALLASTS.
- PROVIDE WITH BATTERY BACKUP/INVERTER BALLAST WHERE INDICATED ON THE DRAWINGS TO PROVIDE EMERGENCY EGRESS LIGHTING. CONNECT THE INVERTER BALLAST SUCH THAT THE LAMPS ARE SWITCHED WITH THE REMAINDER OF THE FIXTURE.

ABBREVIATIONS	
A OR AMP	AMPERES
AFF	ABOVE FINISHED FLOOR
C	CONDUIT
CMT	CIRCUIT
G ON GND	GROUND
GFI OR GFCI	GROUND FAULT CIRCUIT INTERRUPTER
LTC	LIGHTING
MT OR MTD	MOUNT OR MOUNTED
NEC	NATIONAL ELECTRICAL CODE
NFPA	NATIONAL FIRE PROTECTION ASSOC.
NTS	NOT TO SCALE
REC	RECEPTACLE
TYP	TYPICAL
UNO	UNLESS NOTED OTHERWISE
W	WAITS
WP	WEATHER PROOF

VOL. TAGS: 120/208V		PHASE 1 3 WIRE 4			PHASE 2			PHASE 3			MINIMUM BREAKER A.I.C. 10,000		MAIN: 150A MB	
LOCATION	ELECTRICAL ROOM	PHASE	PHASE	PHASE	PHASE	PHASE	PHASE	PHASE	PHASE	PHASE	PHASE	PHASE	PHASE	PHASE
CAT#	BAR.	POLE	DESCRIPTION	VOLT-AMP	A	B	C	VOLT-AMP	DESCRIPTION	POLE	BRK.	CAT#	BAR.	POLE
1	20	1	REC-SCOREBOARD	1200	2400				REC-SCOREBOARD	1	20	4		
3	20	1	REC-SCOREBOARD	1200		2400		1200	FUTURE REC-SCORE	1	20	4		
5	20	1	LIGHTING - TOILETS	1000			2100	1100	LIGHTING-CONNECTION	1	20	6		
7	20	1	REC - CONNECTION	1000	1800			800	REC - CONNECTION	1	20	8		
9	20	1	REC - CONNECTION	1000		2000		1000	REC - CONNECTION	1	20	10		
11	20	1	REC - CONNECTION	1000			1400	400	REC - CONNECTION	1	20	12		
13	20	1	CANOPY LIGHTING	300	1020			720	LTC - CONTACTS	1	20	14		
15	20	2	ACU-1	1620			2620	1600	REC	1	20	16		
17	-	-	ACU-1	1620				3870	WATER HEATER	2	20	18		
19	20	1	HAND DRYER	1500	3750			2250	WATER HEATER	-	-	20		
21	20	1	HAND DRYER	1500		1800		500	EXHAUST FANS	1	20	22		
23	20	1	HAND DRYER	1500			2700	1200	REC - PAVILION	1	20	24		
25	20	1	HAND DRYER	1500	2700			1200	SCOREBOARD	1	20	26		
27	20	2	HP-1	1700		2900		1200	SCOREBOARD	1	20	28		
29	-	-	HP-1	1700			2900	1200	SCOREBOARD	1	20	30		
31	20	1	LIGHTING - PAVILION	1200	2400			1200	FUTURE SCOREBOARD	1	20	32		
33	20	1	LIGHTING - PAVILION	1200		2400		1200	SPARE	1	20	34		
35	20	1	LIGHTING - PAVILION	1200			2400	1200	SPARE	1	20	36		
37	20	1	SPARE	1200	2400			1200	SPARE	1	20	38		
39	20	1	SPARE	1200		2400		1200	SPARE	1	20	40		
41	20	1	SPARE	1200		2400	2400	1200	SPARE	1	20	42		
				TOTAL/PAN	16470	16470	17710							

NOTES:

- ALL CONDUCTORS SHALL BE COPPER.
- A GROUNDING CONDUCTOR SHALL BE IN ALL BRANCH AND FEEDER CIRCUITS.
- EXTEND CIRCUIT 13 FOR CANOPY LIGHTING THROUGH A PHOTO ELECTRIC CONTROL. INSTALLED ON THE EXTERIOR FASCIA OUTSIDE OF THE ELECTRICAL EQUIPMENT ROOM.

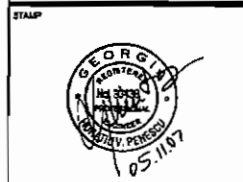
VOL. TAGS: 120/208V		PHASE 1 3 WIRE 4			PHASE 2			PHASE 3			MINIMUM BREAKER A.I.C. 19,489		MAIN: 600A MB	
LOCATION	ELECTRICAL ROOM	PHASE	PHASE	PHASE	PHASE	PHASE	PHASE	PHASE	PHASE	PHASE	PHASE	PHASE	PHASE	PHASE
CAT#	BRK.	POLE	DESCRIPTION	VOLT-AMP	A	B	C	VOLT-AMP	DESCRIPTION	POLE	BRK.	CAT#	BRK.	POLE
1	70	3	PANEL A	15000	17660				2660	LIFT STATION	1	20	4	
3	-	-	PANEL A	15000		17660		2660	LIFT STATION	1	20	4		
5	-	-	PANEL A	15000			17660	2660	LIFT STATION	1	20	6		
7	60	3	LIGHTING - FIELD 1	13300	26600			13300	LIGHTING - FIELD 3	3	60	8		
9	-	-	LIGHTING - FIELD 1	13300		26600		13300	LIGHTING - FIELD 3	-	-	10		
11	-	-	LIGHTING - FIELD 1	13300			26600	13300	LIGHTING - FIELD 3	-	-	12		
13	60	3	LIGHTING - FIELD 1	13300	26600			13300	LIGHTING - FIELD 3	3	60	14		
15	-	-	LIGHTING - FIELD 1	13300		26600		13300	LIGHTING - FIELD 3	-	-	16		
17	-	-	LIGHTING - FIELD 1	13300			26600	13300	LIGHTING - FIELD 3	-	-	18		
19	60	3	LIGHTING - FIELD 2	13300	26600			13300	LIGHTING FUTURE	3	60	20		
21	-	-	LIGHTING - FIELD 2	13300		26600		13300	LIGHTING FUTURE	-	-	22		
23	-	-	LIGHTING - FIELD 2	13300			26600	13300	LIGHTING FUTURE	-	-	24		
25	60	3	LIGHTING - FIELD 2	13300	26600			13300	LIGHTING FUTURE	3	60	26		
27	-	-	LIGHTING - FIELD 2	13300		26600		13300	LIGHTING FUTURE	-	-	28		
29	-	-	LIGHTING - FIELD 2	13300			26600	13300	LIGHTING FUTURE	-	-	30		
31	20	1	SPACE	-	0			-	SPACE	1	20	32		
33	20	1	SPACE	-	0			-	SPACE	1	20	34		
35	20	1	SPACE	-	0			-	SPACE	1	20	36		
37	20	1	SPACE	-	0			-	SPACE	1	20	38		
39	20	1	SPACE	-	0			-	SPACE	1	20	40		
41	20	1	SPACE	-	0			-	SPACE	1	20	42		
				TOTAL/PAN	124060	124060	124060							

NOTES:

MAIN SERVICE OVER CURRENT PROTECTION AND DISCONNECT LABELED FOR SERVICE ENTRANCE.

ROSSER

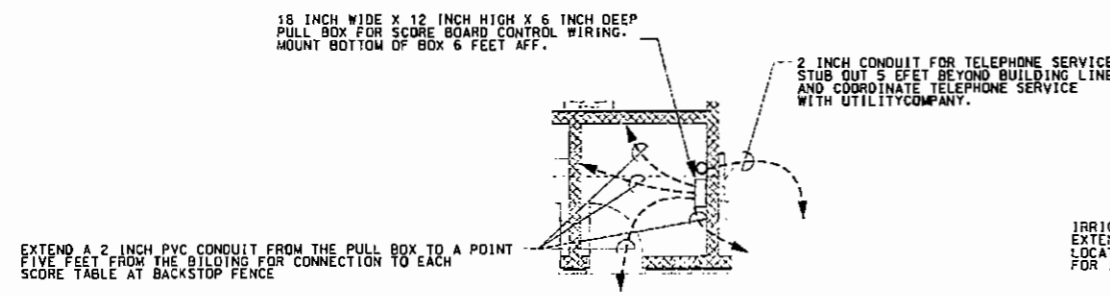
Architect: ROSSER INTERNATIONAL, INC.
160 Legion Drive SE
SMYRNA, GEORGIA 30080
Phone: 770-439-1107
Fax: 770-439-1108
Website: www.rosser.com



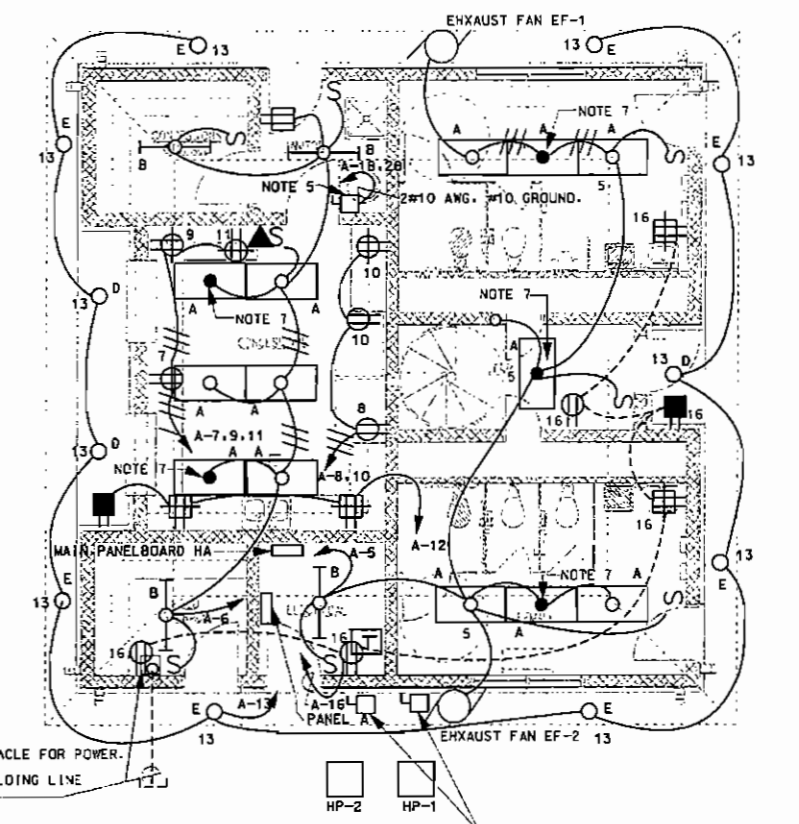
BRINKLEY PARK EXPANSION
SMYRNA, GEORGIA
160 LEGION DRIVE SE
SMYRNA, GEORGIA 30080
Construction Documents

MARK	DATE	DESCRIPTION
ROSSER	PROJECT NUMBER	06010022
DRWING BY		
CHECKED BY		
DATE RELEASED FOR CONSTRUCTION		06/07
COPYRIGHT ©2007 Rosser International, Inc.		
CADD SHEET FILE NAME		
A:\2007\Brinkley Park Expansion\160 Legion Drive SE\160 Legion Drive SE.dwg		
SHEET TITLE		
ELECTRICAL LEGEND, LIGHTING & PANELBOARD SCHEDULES		
SHEET NUMBER		
E1.01		

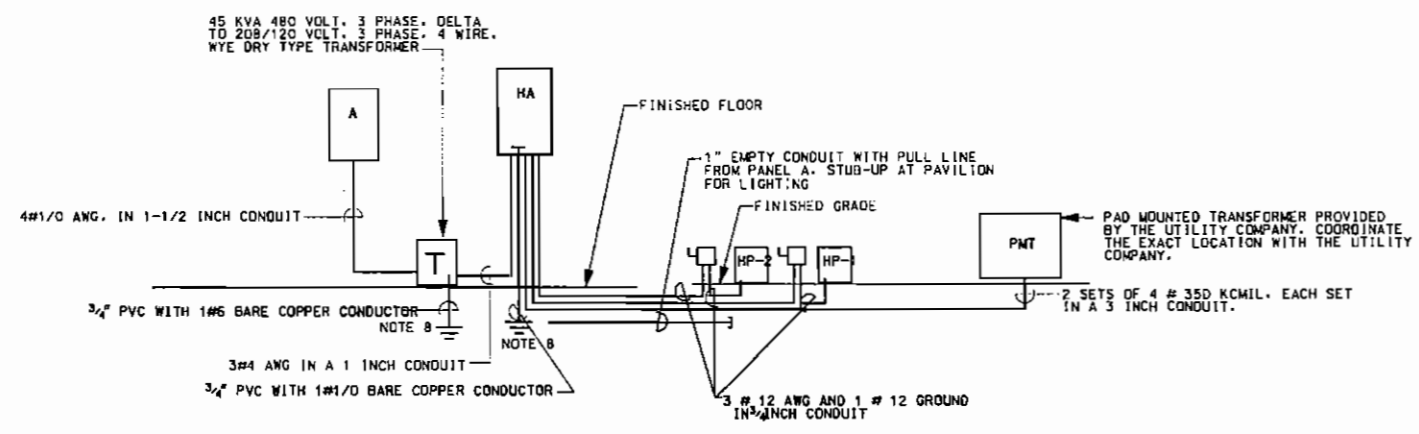
- NOTES:
1. ALL CONDUCTORS SHALL BE COPPER WITH THIN/THIN INSULATION.
 2. CIRCUIT BREAKERS SHALL BE THERMAL/MAGNETIC, BOLT ON TYPE.
 3. ALL MATERIALS AND INSTALLATION SHALL BE IN ACCORDANCE WITH THE 2002 NATIONAL ELECTRICAL CODE (NFPA 70).
 4. INSTALL AN OUTLET BOX 16 INCHES AFF AND EXTEND A 3/4" INCH CONDUIT TO THE SCORE BOARD CONTROL WIRING PULLBOX LOCATED IN THE ELECTRICAL ROOM. (FOR FUTURE SCORE BOARD CONTROL WIRE). INSTALL A BLANK COVER PLATE.
 5. 30 AMP, 3 POLE, NON-FUSED, 600 VOLT DISCONNECT SWITCH. CONNECT THE WATER HEATER.
 6. ALL BRANCH CIRCUITS AND FEEDERS SHALL CONTAIN A GROUNDING CONDUCTOR.
 7. EXTEND A CONTINUOUSLY ENERGIZED CIRCUIT FOR CONNECTION TO THE BATTERY/INVERTER BALLAST TO ALLOW THE LAMP TO BE SWITCHED OFF WITH THE REMAINDER OF THE LAMPS.
 8. CONNECT TO DRIVEN GROUND ROD AND MAIN WATER SERVICE.



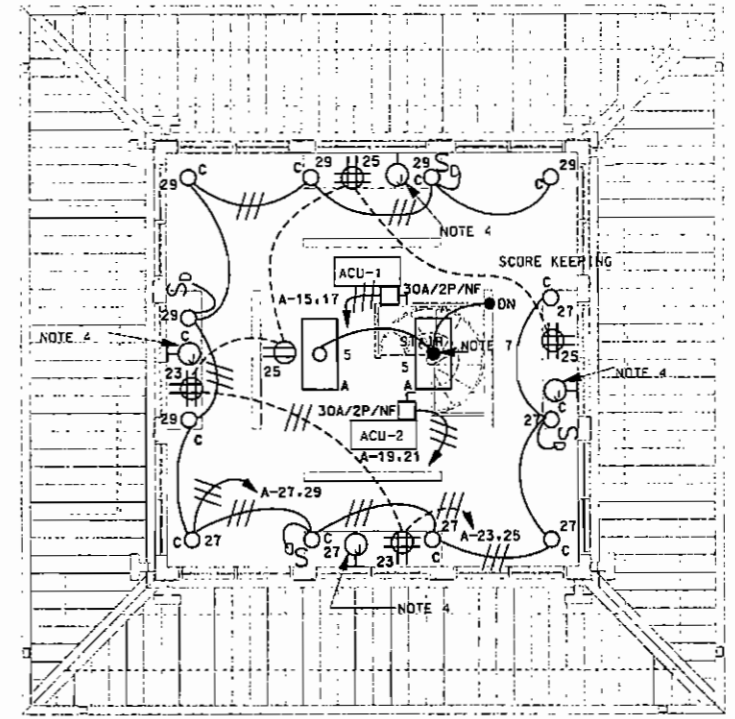
4 PART PLAN - ELECTRICAL ROOM
E1.02 NOT TO SCALE



1 FIRST FLOOR PLAN
SCALE: 1/4" = 1'-0"



3 ONE LINE DIAGRAM
E1.02 NOT TO SCALE



2 SECOND FLOOR PLAN
SCALE: 1/4" = 1'-0"

TO ORDER PLANS GO TO WWW.LDIREPRO.COM



BRINKLEY PARK EXPANSION
SMYRNA, GEORGIA
160 LEGION DRIVE SE
SMYRNA, GEORGIA 30080
Construction Documents

MARK	DATE	DESCRIPTION
ROSSER	PROJECT NUMBER	0001.00.02
DRAWN BY		
CHECKED BY		
DATE RELEASED FOR CONSTRUCTION		05/10/07
COPYRIGHT ©2007 Rossier International, Inc.		
CADD SHEET FILE NAME		
Project: Brinkley Park Expansion (160 Legion Drive) - 0001.00.02		
SHEET TITLE		
FLOOR PLAN		
POWER		
LIGHTING		
ALTERNATE		
SHEET NUMBER		
E1.02A		

NOTED: ALL CONDUCTORS SHALL BE COPPER WITH THIN/THIN INSULATION.

RELEASED FOR CONSTRUCTION

