



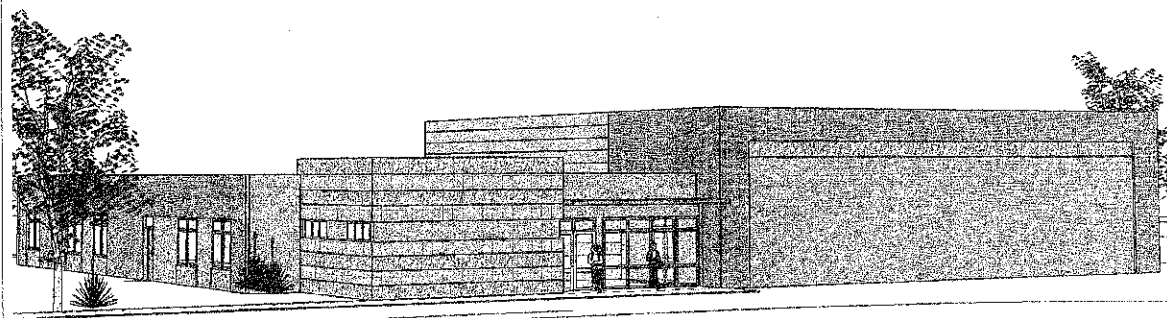
214 Burgess St.
Fayetteville, NC 28301
Phone: 910.484.4989
Fax: 910.484.1466
www.sfla.biz

ADDITIONS TO BLUE CREEK & NORTHWOODS ELEMENTARY SCHOOLS

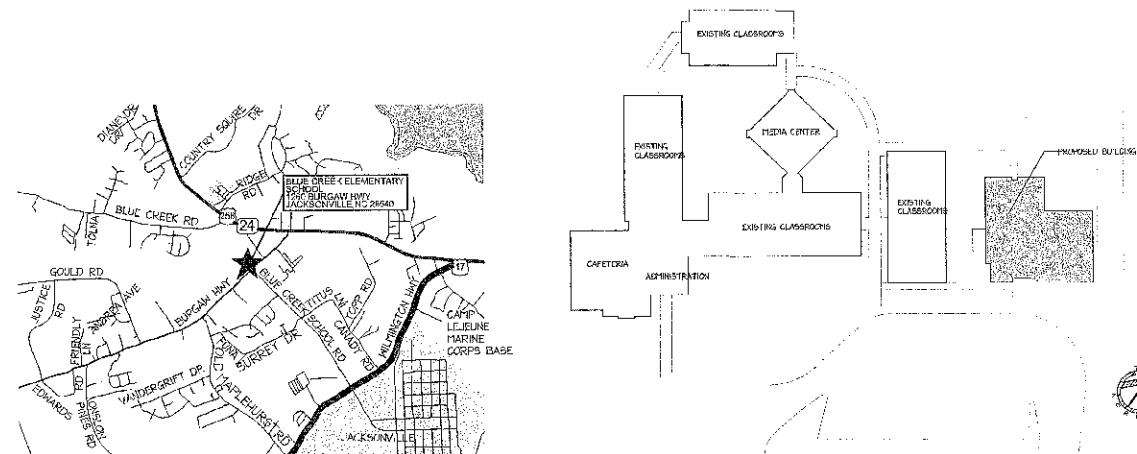
ONSLOW COUNTY, NORTH CAROLINA



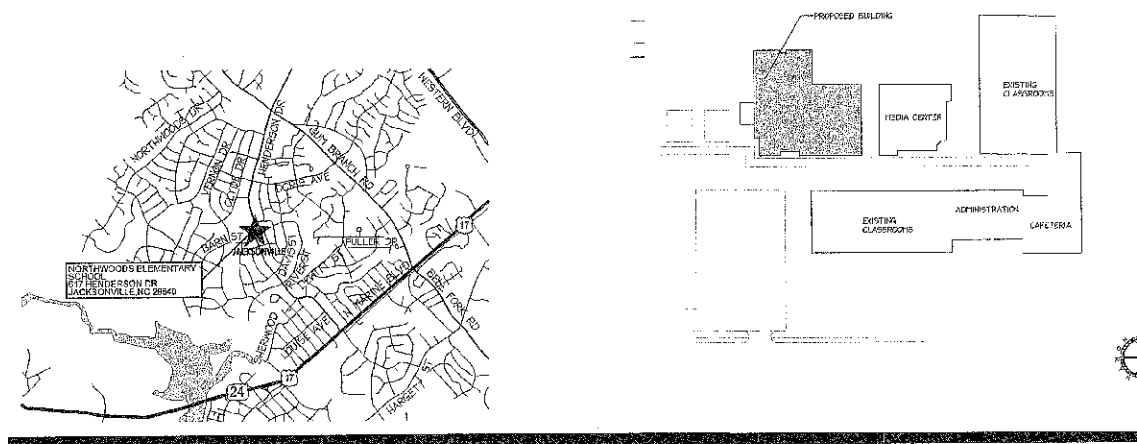
RENDERING (For Conceptual Representation Only)



BLUE CREEK ES VICINITY MAP / CAMPUS MAP



NORTHWOODS ES VICINITY MAP / CAMPUS MAP



DRAWING INDEX

GENERAL	
Q-1	GENERAL NOTES - LEGENDS - ABBREVIATIONS
LIFE SAFETY	
LS-1	BLUE CREEK ELEMENTARY SCHOOL - BUILDING CODE SUMMARY
LS-2	NORTHWOODS ELEMENTARY SCHOOL - BUILDING CODE SUMMARY
LS-3	BLUE CREEK & NORTHWOODS - UL DETAILS & LIFE SAFETY PLAN
CIVIL	
C-1	NORTHWOODS ELEMENTARY SCHOOL OVERALL AND SITE PLAN
C-2	NORTHWOODS ELEMENTARY SCHOOL GRADING, DRAINAGE, EROSION & SEDIMENTATION CONTROL PLAN
C-3	NORTHWOODS ELEMENTARY SCHOOL WATER AND SEWER PLAN
C-4	NORTHWOODS ELEMENTARY SCHOOL DETAIL SHEET
C-5	NORTHWOODS ELEMENTARY SCHOOL EXISTING CONDITIONS PLAN
C-6	BLUE CREEK ELEMENTARY OVERALL PLAN
C-7	BLUE CREEK ELEMENTARY GRADING, DRAINAGE, EROSION & SEDIMENTATION CONTROL PLAN
C-8	BLUE CREEK ELEMENTARY WATER AND SEWER PLAN
C-9	BLUE CREEK ELEMENTARY DETAIL SHEET
ARCHITECTURAL	
A-1	FLOOR PLAN
A-2	ROOF PLAN & DETAILS
A-3	EXTERIOR ELEVATIONS
A-4	BUILDING SECTIONS
A-5	WALL SECTIONS
A-6	REFLECTED CEILING PLAN
STRUCTURAL	
S-1	FOUNDATION PLAN - DETAILS AND SECTIONS
S-2	ROOF FRAMING PLAN - DETAILS AND SECTIONS
S-3	SCHEDULES, DETAILS AND SECTIONS
S-4	SECTIONS & DETAILS
FIRE PROTECTION	
FP-1	BLUE CREEK FIRE PROTECTION DETAILS
FP-2	BLUE CREEK FIRE PROTECTION PLAN
FP-3	NORTHWOODS FIRE PROTECTION DETAILS
FP-4	NORTHWOODS FIRE PROTECTION PLAN
PLUMBING	
P-1	PLUMBING DETAILS, LEGENDS, NOTES
P-2	PLUMBING FLOOR PLAN - BLUE CREEK ELEM.
P-3	PLUMBING FLOOR PLAN - NORTHWOODS ELEM.
P-4	WASTE & VENT RISER - BLUE CREEK ELEM.
P-5	HOT & COLD WATER RISER - BLUE CREEK ELEM.
P-6	WASTE & VENT RISER - NORTHWOODS ELEM.
P-7	HOT & COLD WATER RISER - NORTHWOODS ELEM.
MECHANICAL	
M-1	SCHEDULES, NOTES, LEGENDS, DETAILS
M-2	MECHANICAL FLOOR PLAN
M-3	DETAILS AND CONTROLS
ELECTRICAL	
E-1	GENERAL ELECTRICAL
E-2	LIGHTING PLANS
E-3	POWER PLAN
E-4	PANEL SCHEDULES, POWER RISER, LOAD SUMMARY
E-5	OVERALL CAMPUS PLAN - BLUE CREEK ELEMENTARY
E-6	OVERALL CAMPUS PLAN - NORTHWOODS ELEMENTARY
E-7	PENETRATIONS DETAILS, ELECTRICAL DETAILS, RISERS
E-8	ELECTRICAL DETAILS

PARKER & ASSOCIATES
Civil Engineers
(910)455-2414

GARDNER & McDANIEL
Structural Engineers
(919)489-0926

PROGRESSIVE DESIGN COLLABORATIVE
PM&E Engineers
(919)790-9989

SET NUMBER:

02/28/2007

BLUE CREEK & NORTHWOODS ELEMENTARY SCHOOLS

PROJECT NUMBER: 00531000/00533000