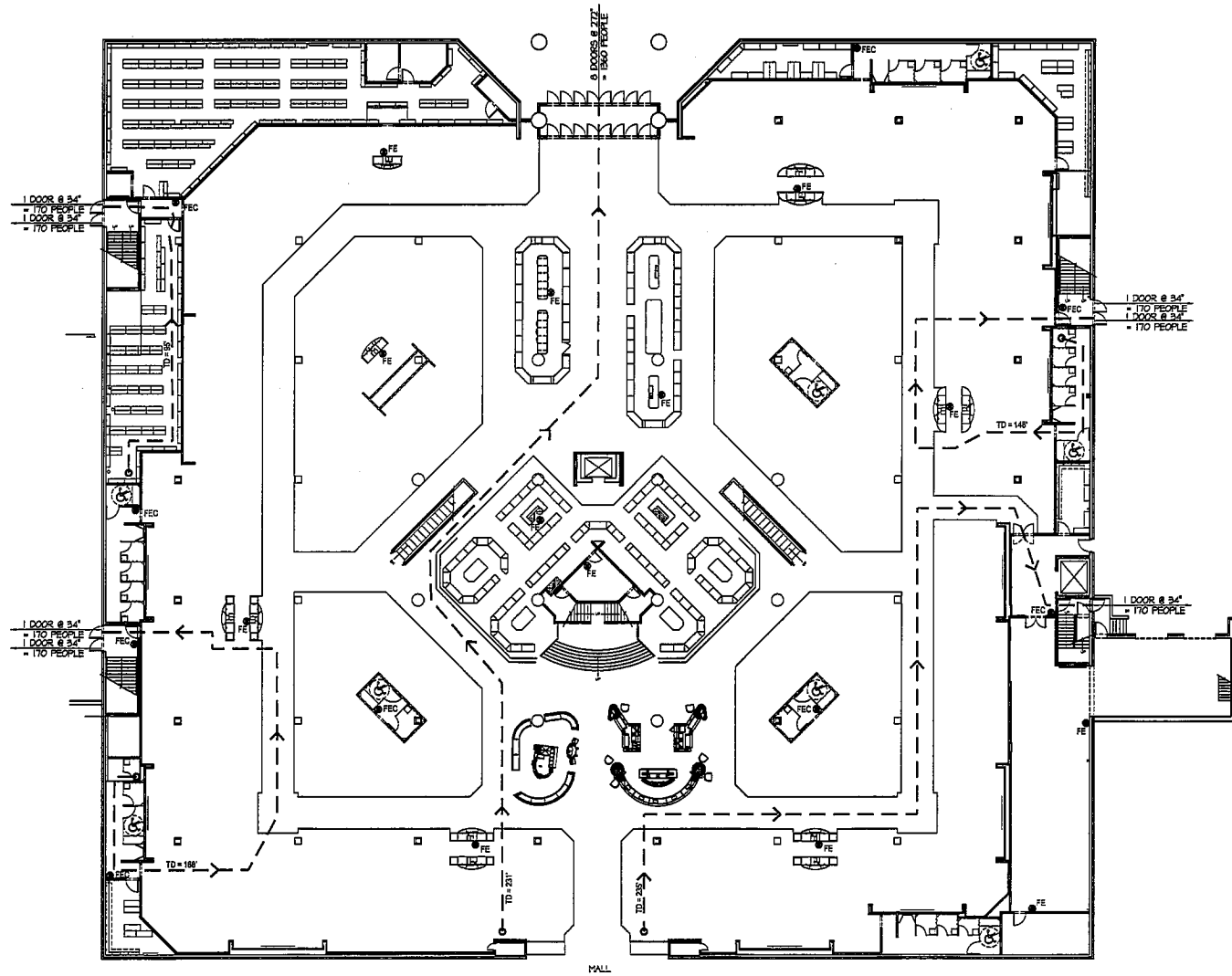


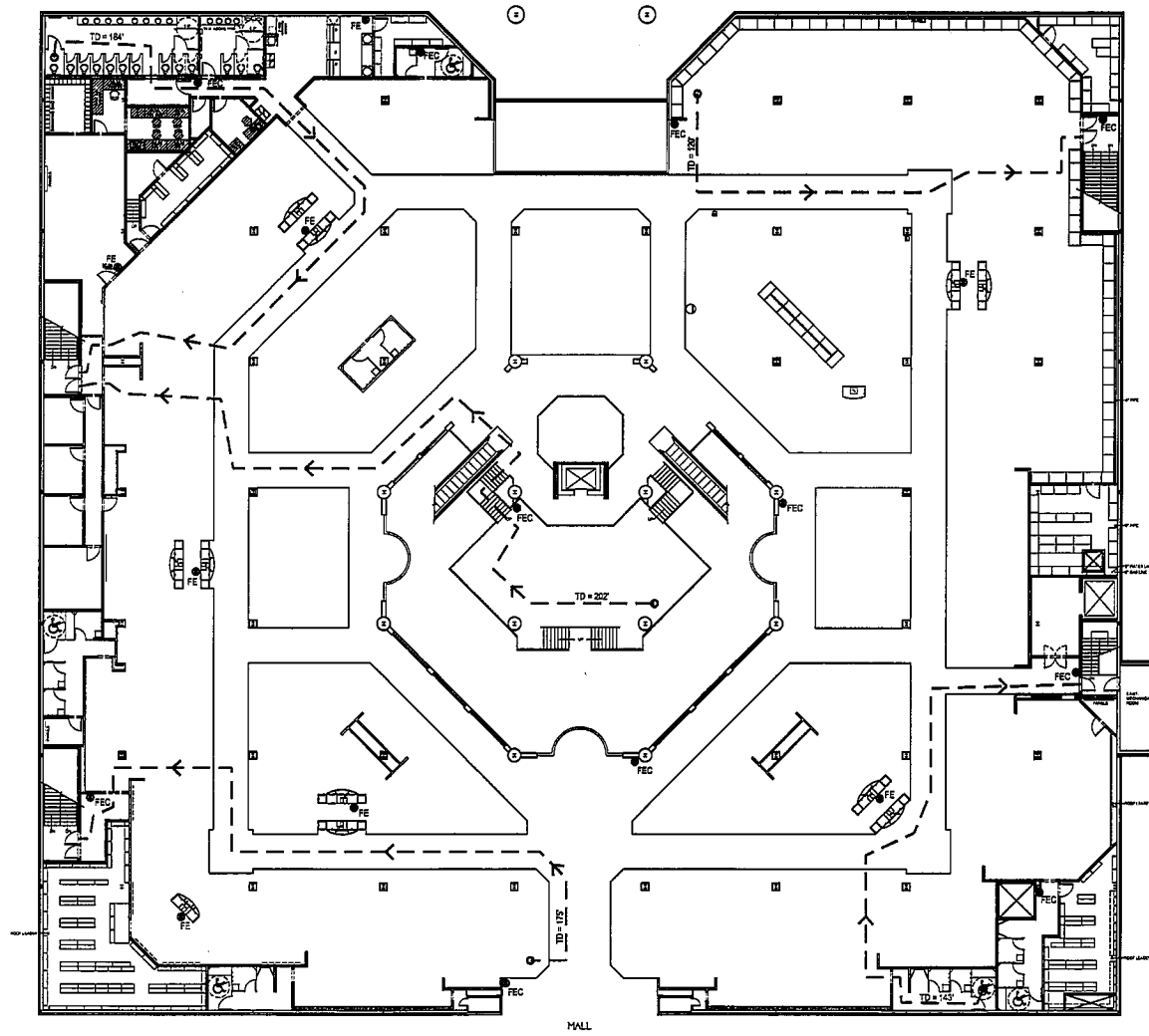




To order plans, go to [www.idirepro.com](http://www.idirepro.com)



LIFE SAFETY PLAN FIRST FLOOR  
SCALE: N.T.S.



LIFE SAFETY PLAN SECOND FLOOR  
SCALE: N.T.S.

**EXIT DATA**

PROJECT: BELK - MADISON SQUARE, HUNTSVILLE, ALABAMA  
BUILDING AREA: 108,820 SF EXISTING 2 STORY SPRINKLERED

**OCCUPANCY CALCULATION:**

FLOOR:	STOCK / RECEIVING AREA:	@ 300 SF/PERSON	22 PEOPLE
FIRST FLOOR:	SALES AREA:	47,453 @ 30 SF/PERSON	1,582 PEOPLE
	TOTAL:	56,875 SQ. FT.	1,604 PEOPLE
	REQUIRED EXIT WIDTH = 1,604 PEOPLE x 0.2 INCH / PERSON = 321 INCHES (8.4 DOORS)		
	PROVIDED SALES EXIT WIDTH = (12) DOORS x 34 INCHES = 408 INCHES		
SECOND FLOOR:	STOCK / RECEIVING AREA:	4,354 @ 300 SF/PERSON	17 PEOPLE
	SALES AREA:	47,781 @ 40 SF/PERSON	796 PEOPLE
	TOTAL:	52,715 SQ. FT.	813 PEOPLE
	REQUIRED EXIT WIDTH = 813 PEOPLE x 0.2 INCH / PERSON = 163 INCHES (4.8 DOORS)		
	PROVIDED SALES EXIT WIDTH = (7) DOORS x 34 INCHES = 238 INCHES		
OCCUPANCY TOTAL:			2,417 PEOPLE

MAXIMUM TRAVEL DISTANCE = 250'  
DEAD END LIMIT = 27'  
MINIMUM CORRIDOR WIDTH = 3'-6"

**FIRE CONTROL NOTES:**

**AUTOMATIC SPRINKLER SYSTEM:**  
AN ALABAMA DEPARTMENT OF INSURANCE LICENSED FIRE SPRINKLER CONTRACTOR MUST INSTALL THE ALTERATIONS TO THE EXISTING FIRE SPRINKLER SYSTEM. HYDRAULIC CALCULATIONS FOR "ORDINARY HAZARD GROUP 2" .37 GPM OVER THE REMOTE 3000 SQ. FT., ARE REQUIRED FOR ALL PORTIONS OF THE SYSTEM INCLUDING THE SHOE STOCK AREAS AND THE UPPER LEVEL STORAGE AREA ABOVE THE RESTROOMS.

FIRE SPRINKLER PLANS AND CALCULATIONS, INCLUDING THE LAYOUT AND STORAGE RACK AND SHELF CONFIGURATION, HAS TO BE SUBMITTED BY THE FIRE SPRINKLER CONTRACTOR TO THE LOCAL AUTHORITY FOR APPROVAL BEFORE WORK MAY COMMENCE.

**FIRE ALARM SYSTEM:**  
AN ALABAMA DEPARTMENT OF INSURANCE LICENSED FIRE ALARM CONTRACTOR MUST INSTALL THE ALTERATIONS TO THE FIRE ALARM SYSTEM AND SUBMIT ENGINEERED FIRE ALARM PLANS AND AN ACCESS CONTROL SYSTEM SUBMITTAL, AS REQUIRED BY THE FIRE DEPARTMENT FOR APPROVAL BEFORE WORK MAY COMMENCE.

**PORTABLE FIRE EXTINGUISHERS:**

- EXISTING AND ADDITIONAL NEW 2-A TYPE EXTINGUISHERS FOR CLASS ABC (MODERATE) HAZARD ARE TO BE INSTALLED BY THE OWNER AT THE CUSTOMER SERVICE COUNTERS AND NON-SALES AREAS, SUCH THAT THE TRAVEL DISTANCE TO AN EXTINGUISHER DOES NOT EXCEED 75 FEET AND IS CONSPICUOUS LOCATIONS.
- G.C. TO PROVIDE "LARGEN #210B-R3" F.E. CABINETS SUCH THAT EXTINGUISHERS ARE ACCESSIBLE TO THE PUBLIC.

ALL STAFF SHALL BE TRAINED IN THE USE OF PORTABLE FIRE EXTINGUISHERS.

**RETURN AIR PLENUM:**  
THE USE OF COMBUSTABLE MATERIALS ARE PROHIBITED IN THE PLENUM SPACE

**JAMES DAVID HUDSON ARCHITECT**  
1410 COWART STREET  
CHATTANOOGA, TN. 37408  
423 265 4313

**BELK DEPARTMENT STORES ALTERATION AND REMODEL**  
MADISON SQUARE MALL  
5901 UNIVERSITY DRIVE  
HUNTSVILLE, ALABAMA



FOR BID ONLY NOT FOR CONSTRUCTION

ISSUE DATES  
INITIAL 03-19-07  
Add. #1 04-08-07

JOB NO. | DWN | CKD  
07-008

ARCHITECTURAL SHEET NO.  
**C03**