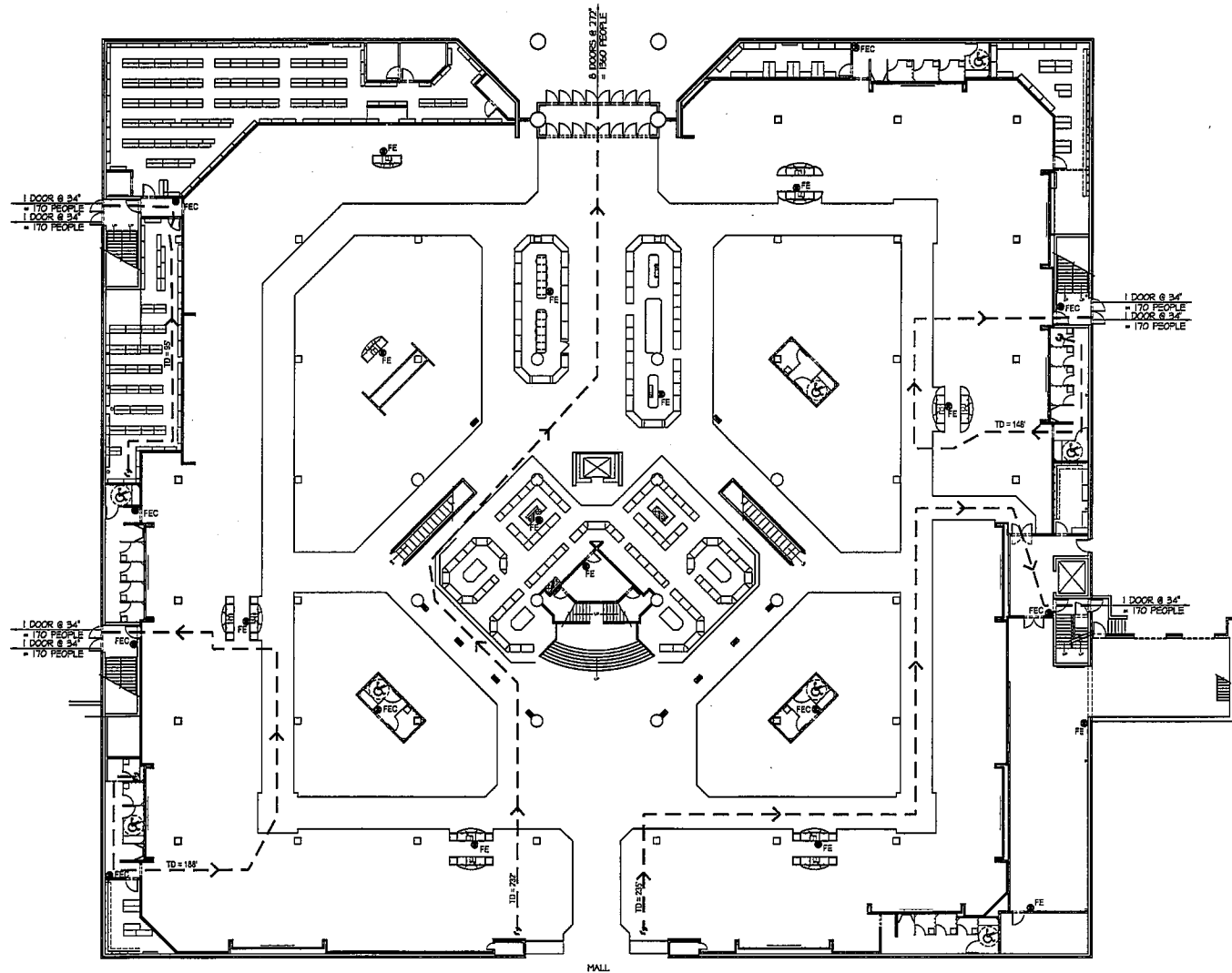
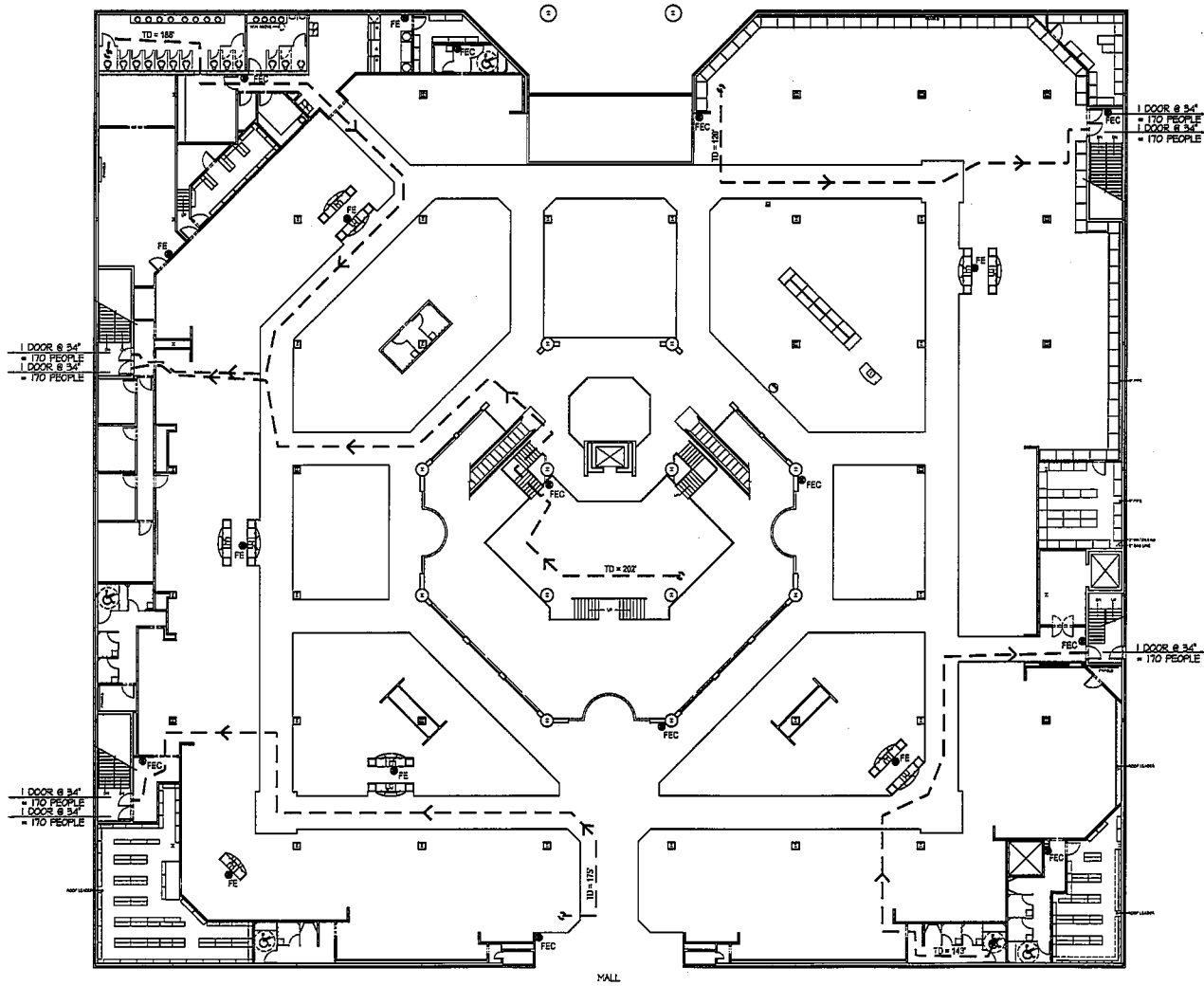


To order plans, go to www.idirepro.com



LIFE SAFETY PLAN FIRST FLOOR

SCALE: N.T.S.



LIFE SAFETY PLAN SECOND FLOOR

SCALE: N.T.S.

EXIT DATA

PROJECT: BELK - MADISON SQUARE, HUNTSVILLE, ALABAMA
 BUILDING AREA: 168,820 SF
 EXISTING 2 STORY SPRINKLERED

OCCUPANCY CALCULATION:

FIRST FLOOR:			
STOCK / RECEIVING AREA:	9,422	@ 300 SF/PERSON	32 PEOPLE
SALES AREA:	47,453	@ 30 SF/PERSON	1,582 PEOPLE
TOTAL:	56,875 SQ. FT.		1,614 PEOPLE
REQUIRED EXIT WIDTH = 1,614 PEOPLE x 0.2 INCH / PERSON = 321 INCHES (8.4 DOORS)			
PROVIDED SALES EXIT WIDTH = (12) DOORS x 34 INCHES = 408 INCHES			

SECOND FLOOR:			
STOCK / RECEIVING AREA:	4,854	@ 300 SF/PERSON	17 PEOPLE
SALES AREA:	47,741	@ 30 SF/PERSON	1,591 PEOPLE
TOTAL:	52,595 SQ. FT.		1,608 PEOPLE
REQUIRED EXIT WIDTH = 1,608 PEOPLE x 0.2 INCH / PERSON = 322 INCHES (8.4 DOORS)			
PROVIDED SALES EXIT WIDTH = (7) DOORS x 34 INCHES = 238 INCHES			

OCCUPANCY TOTAL: 2,417 PEOPLE

MAXIMUM TRAVEL DISTANCE = 250'
 DEAD END LIMIT = 20'
 MINIMUM CORRIDOR WIDTH = 3'-0"

FIRE CONTROL NOTES:

AUTOMATIC SPRINKLER SYSTEM:
 AN ALABAMA DEPARTMENT OF INSURANCE LICENSED FIRE SPRINKLER CONTRACTOR MUST INSTALL THE ALTERATIONS TO THE EXISTING FIRE SPRINKLER SYSTEM. HYDRAULIC CALCULATIONS FOR "ORDINARY HAZARD GROUP 2" .17 GPM OVER THE REMOTE 3000 SQ. FT. ARE REQUIRED FOR ALL PORTIONS OF THE SYSTEM, INCLUDING THE SHOE STOCK AREAS AND THE UPPER LEVEL STORAGE AREA ABOVE THE RESTROOMS.

FIRE SPRINKLER PLANS AND CALCULATIONS, INCLUDING THE LAYOUT AND STORAGE RACK AND SHELF CONFIGURATION, HAS TO BE SUBMITTED BY THE FIRE SPRINKLER CONTRACTOR TO THE LOCAL AUTHORITY FOR APPROVAL BEFORE WORK MAY COMMENCE.

FIRE ALARM SYSTEM:
 AN ALABAMA DEPARTMENT OF INSURANCE LICENSED FIRE ALARM CONTRACTOR MUST INSTALL THE ALTERATIONS TO THE FIRE ALARM SYSTEM AND SUBMIT ENGINEERED FIRE ALARM PLANS AND AN ACCESS CONTROL SYSTEM SUBMITTAL, AS REQUIRED BY THE FIRE DEPARTMENT FOR APPROVAL BEFORE WORK MAY COMMENCE.

PORTABLE FIRE EXTINGUISHERS:
 2-A TYPE EXTINGUISHERS FOR CLASS ABC (MODERATE) HAZARD ARE TO BE INSTALLED BY THE OWNER AT THE CUSTOMER SERVICE COUNTERS AND NON-SALES AREAS, SUCH THAT THE TRAVEL DISTANCE TO AN EXTINGUISHER DOES NOT EXCEED 75 FEET AND IN CONSPICUOUS LOCATIONS. (SEE SPECIFICATIONS) (SEE SPECIFICATIONS)
 O.C. TO PROVIDE "LARSSEN #205-43" F.E. CABINETS SUCH THAT EXTINGUISHERS ARE ACCESSIBLE TO THE PUBLIC.
 ALL STAFF SHALL BE TRAINED IN THE USE OF PORTABLE FIRE EXTINGUISHERS.

RETURN AIR PLENUM:
 THE USE OF COMBUSTIBLE MATERIALS ARE PROHIBITED IN THE PLENUM SPACE

**BELK DEPARTMENT STORES
 ALTERATION AND REMODEL**

MADISON SQUARE MALL
 5901 UNIVERSITY DRIVE
 HUNTSVILLE, ALABAMA



FOR BID
 ONLY
 NOT FOR
 CONSTRUCTION

ISSUE DATES
 03-19-07

JOB NO. D'WN | CKD
 07-008

ARCHITECTURAL
 SHEET NO.

C03

**JAMES DAVID HUDSON
 ARCHITECT**

1410 COWART STREET
 CHATTANOOGA, TN. 37408
 423 265 4313