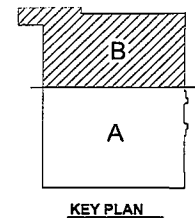
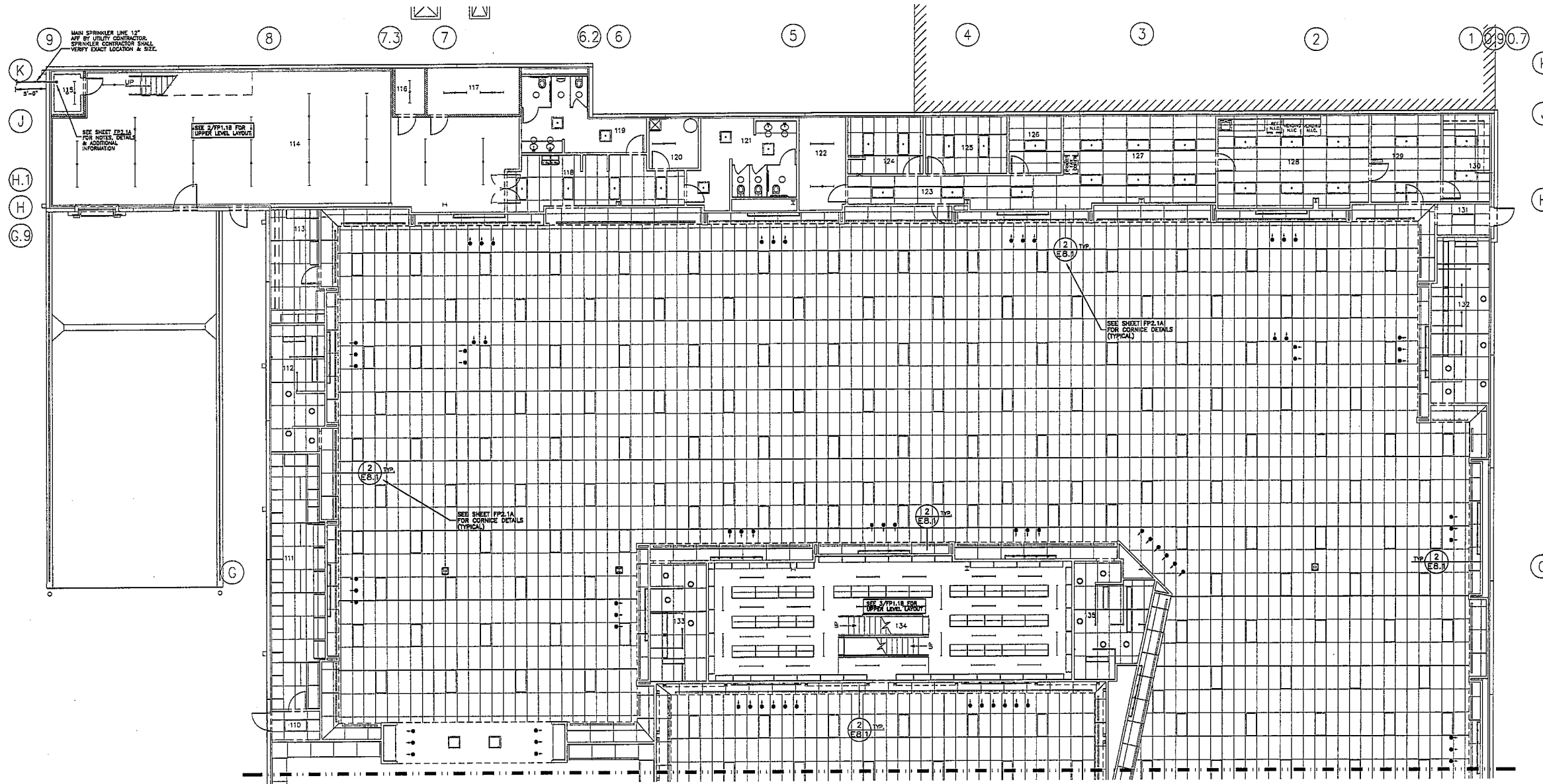
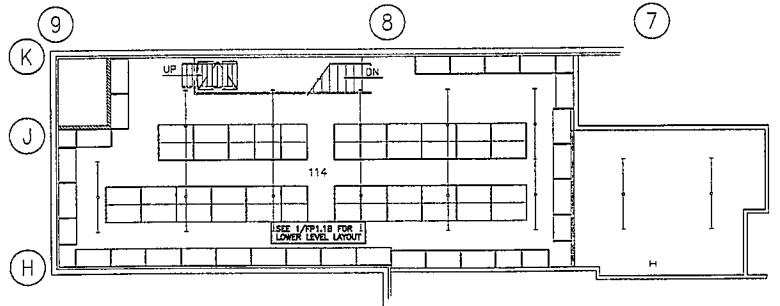


To order plans, go to www.idirepro.com

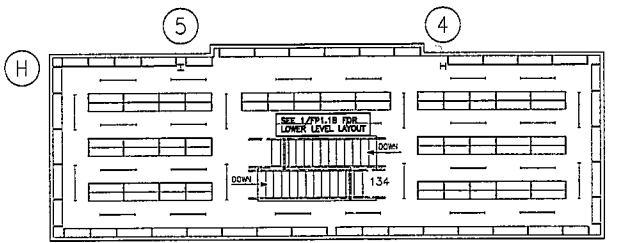
G:\000 Project Files - Belk\000-BELK\007\070605 - Oxford MS\FPI-1A-FPI-1B-396.dwg - May 17, 2007 - 2:07pm - ACS



1 FIRE PROTECTION PLAN - AREA B
FPI.1B SCALE: 1/8" = 1'-0"



2 RECEIVING AREA MEZZANINE
FPI.1B SCALE: 1/8" = 1'-0"



3 DOUBLE DECK STOCK ROOM - UPPER LEVEL
FPI.1B SCALE: 1/8" = 1'-0"

THIS PLAN IS FOR GENERAL INFORMATION ONLY. SEE SPECS. FOR SPRINKLER SYSTEM REQUIREMENTS.

- SPRINKLER NOTES**
- DOUBLE DECK SHOE STOCK - SHOE STOCK SHALL BE SPRINKLED ON BOTH LEVELS. HEADS TO BE UPRIGHT, ON LOWER LEVEL, SPRINKLER HEADS TO BE PLACED BETWEEN SHELVING IN EACH AISLE.
 - RECEIVING - IF RECEIVING AREA HAS TWO LEVELS, BOTH LEVELS TO BE SPRINKLED. SPRINKLER HEADS TO BE UPRIGHT.
 - SPRINKLER CONTRACTOR MUST HAVE SHOP DRAWINGS:
 - A) PREPARED & SEALED BY PROFESSIONAL ENGINEER
 - B) APPROVED BY LOCAL FIRE MARSHAL PRIOR TO SUBMITTING TO PROJECT ARCHITECT & PRIOR TO ANY CONSTRUCTION.
- SEE SHEET J22.18 FOR ADDITIONAL NOTES.

ROOM LEGEND	
100	GENERAL SALES
101	VESTIBULE
102	FITTING ROOM
103	VESTIBULE
104	ELECTRICAL ROOM
105	FITTING ROOM
106	FITTING ROOM
107	STOCKROOM
108	STOCKROOM
109	VESTIBULE
110	VESTIBULE
111	STOCKROOM
112	FITTING ROOM
113	STOCKROOM
114	RECEIVING
115	SPRINKLER ROOM
116	ELECTRICAL ROOM
117	ELECTRICAL ROOM
118	CREDIT CORRIDOR
119	MENS RESTROOM
120	JANITOR CLOSET
121	WOMENS RESTROOM
122	TELECOM ROOM
123	CORRIDOR
124	CASH OFFICE
125	STORE MANAGER
126	INTERVIEW / TRAINING
127	ASM WORKROOM
128	EMPLOYEE LOUNGE
129	COATS/LOCKERS
130	SECURITY
131	VESTIBULE
132	FITTING ROOM
133	FITTING ROOM
134	SHOE STOCK ROOM
135	FITTING ROOM
137	STOCKROOM
138	STOCKROOM
139	FITTING ROOM

Belk

DAVID N. SHULTZ, P.E.
 100 N. GARDNER ST., SUITE 200
 OXFORD, MISSISSIPPI 38655
 PHONE: 662-234-9933
 FAX: 662-234-9934

PROJECT: BELK DEPARTMENT STORES
 OXFORD GALLERIA
 OXFORD, MISSISSIPPI
 NEW STORE

DATE: 5/17/07
 DRAWN BY: J. B. B.
 CHECKED BY: J. B. B.
 SCALE: AS SHOWN

OF SHEETS
 SHEET NUMBER
 FPI.1B
 OF SHEETS

