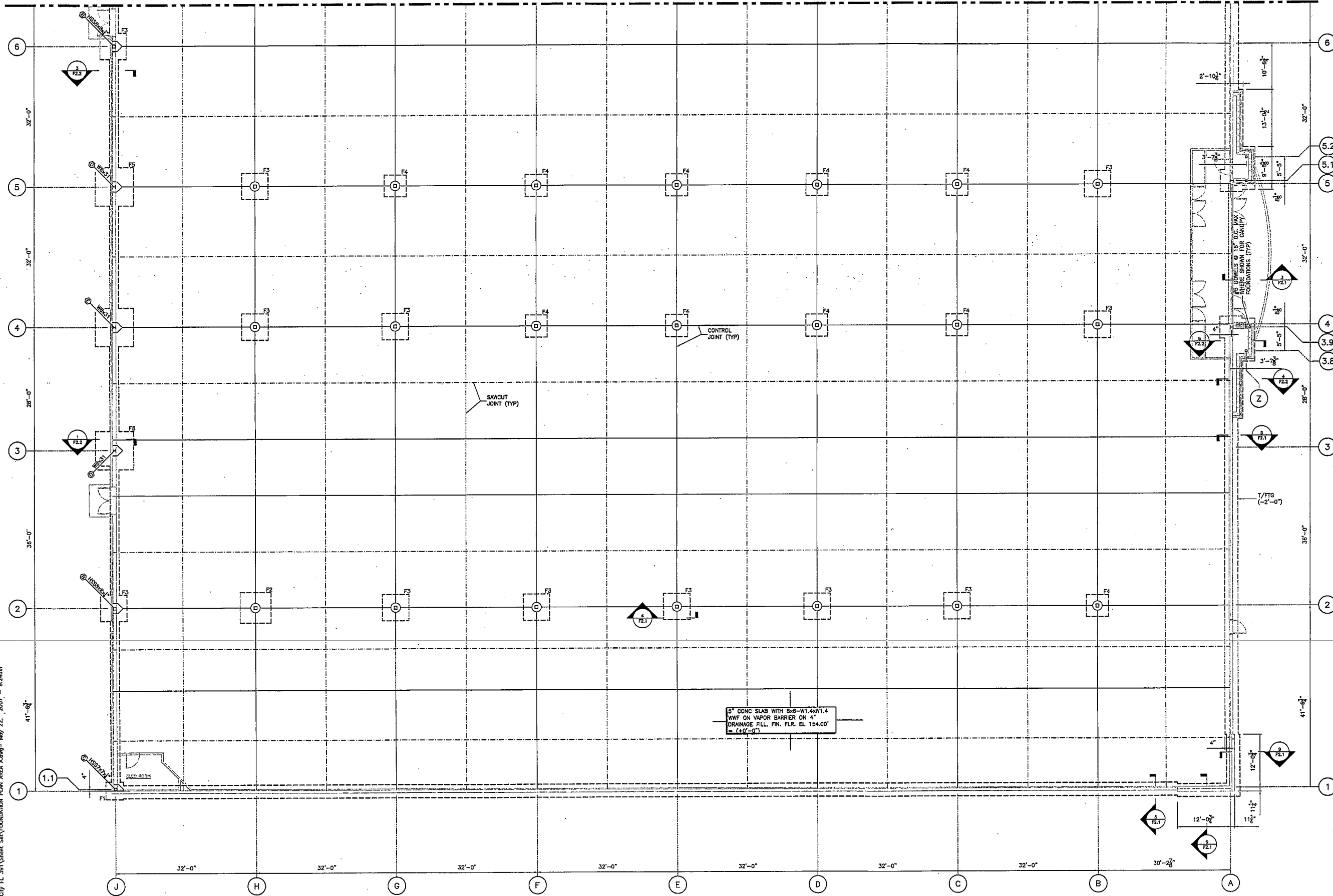


R:\BELK\Haines City FL 391\Sheet.Sha\FOUNDATION PLAN AREA A.dwg - May 22, 2007 - 9:24am

MATCHLINE -- SEE SHEET F1.1B



1 FOUNDATION PLAN AREA A
Scale: 1/8" = 1'-0"

ARF RETAIL ARCHITECTURE & INTERIORS
ARTHEC DESIGN GROUP, INC.
1410 COURT STREET, INC.
ORLANDO, FL 32835
TEL: 407.255.8515

Gannett Flooring
301 S. ADAMS STREET, SUITE 94
ORLANDO, FL 32801
TEL: (407) 725-7415 FAX: (407) 332-9361

BELK DEPARTMENT STORES

Belk

FOUNDATION PLAN AREA A

POSNER COMMONS
GRANDVIEW PARKWAY & VICTOR POSNER BOULEVARD
ORLANDO, FLORIDA

To order plans, go to www.belkpro.com

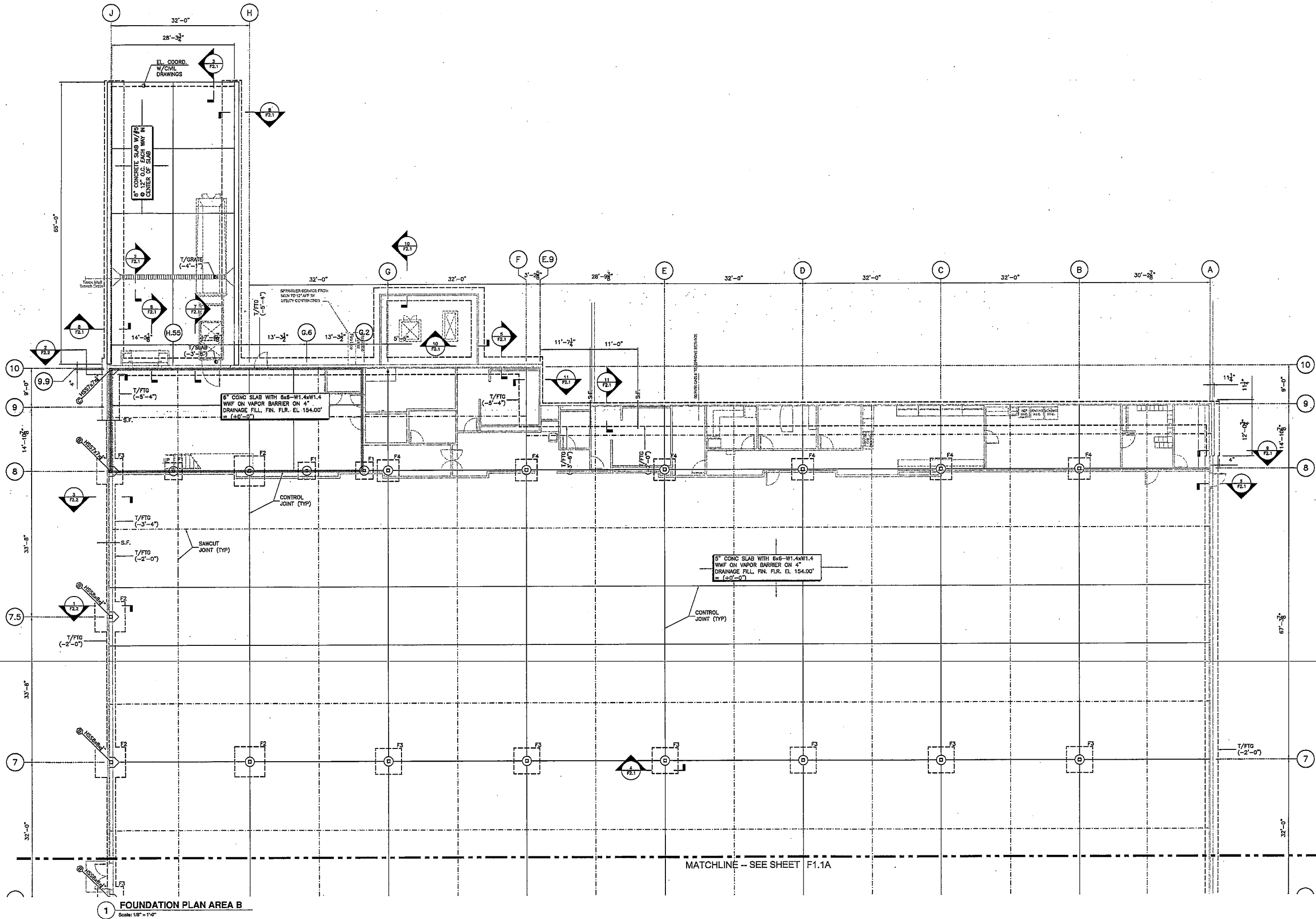
ISSUE DATES
INITIAL 03-15-07

JOB NO. 07-020 | DWN | CKD

STRUCTURAL SHEET NO.

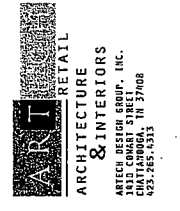
F1.1A

R:\BELK\Holmes City FL 391\Sheet Set\FOUNDATION PLAN AREA B.dwg - May 22, 2007 - 9:25am



1 FOUNDATION PLAN AREA B
Scale: 1/8" = 1'-0"

MATCHLINE -- SEE SHEET F1.1A



Connors Fleming
 ARCHITECTURE & INTERIORS
 301 S. HUNTER STREET, SUITE 104
 TAMPA, FLORIDA 33601
 TEL: (813) 272-7000 FAX: (813) 272-7001

BELK DEPARTMENT STORES



POSNER COMMONS
 GRANDVIEW PARKWAY & VICTOR POSNER BOULEVARD
 TAMPA, FLORIDA

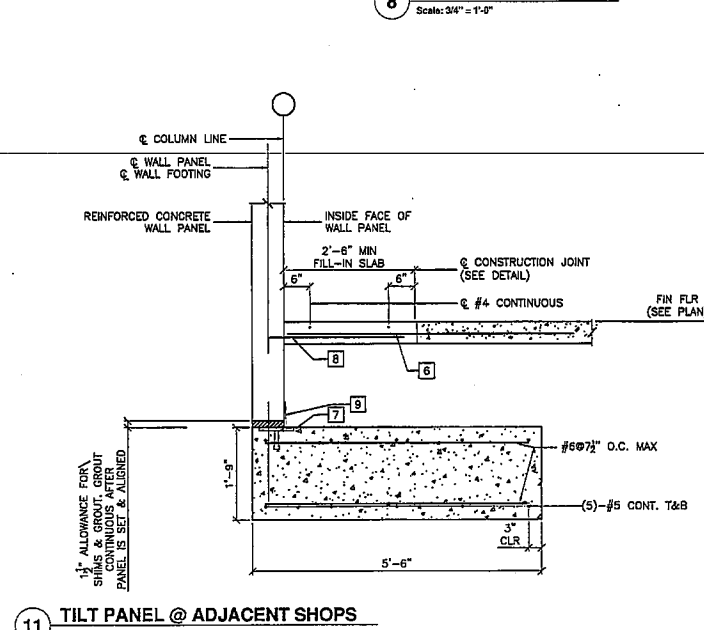
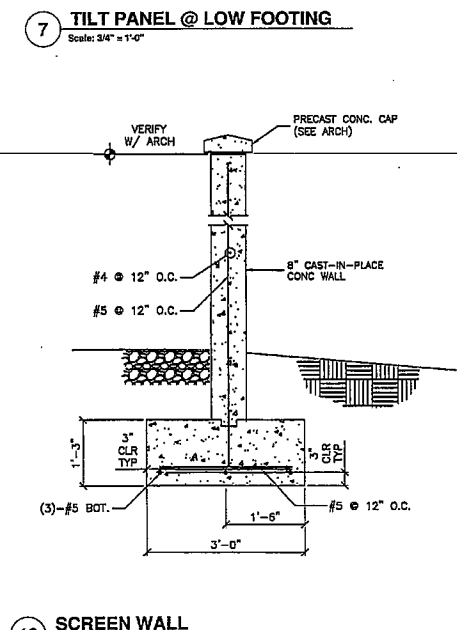
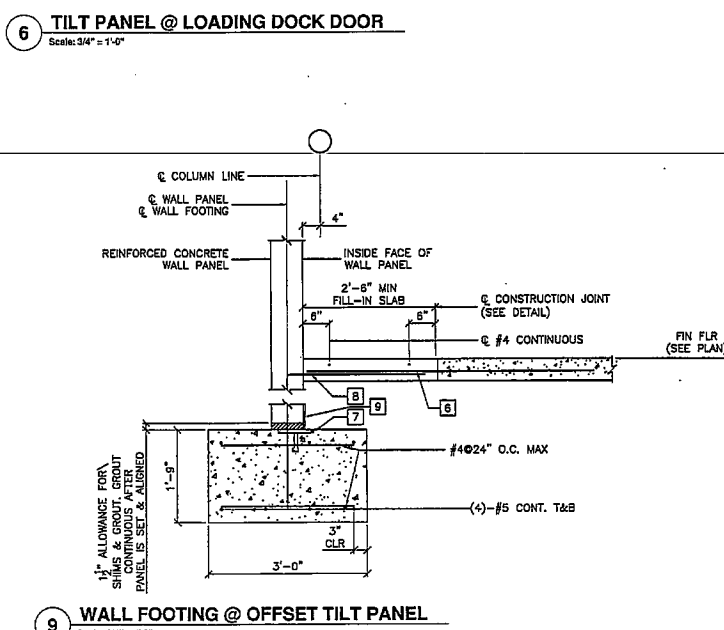
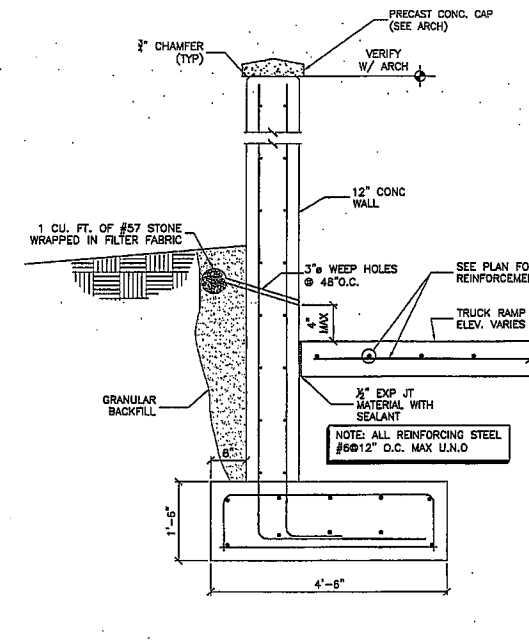
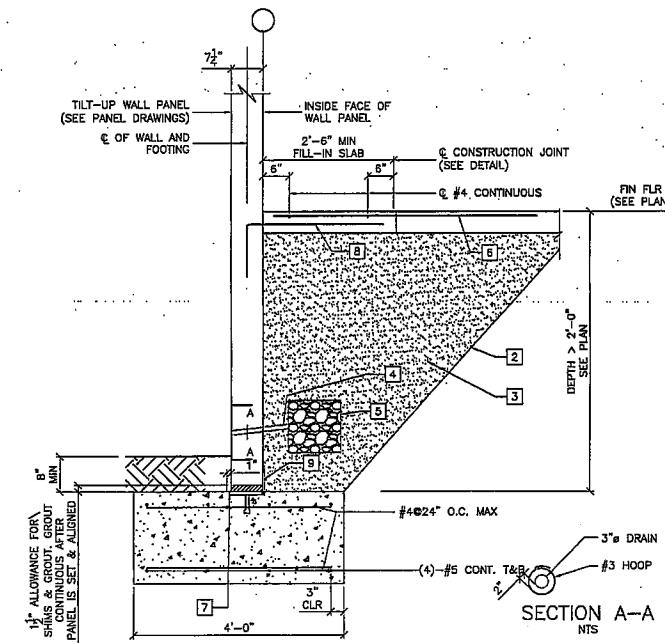
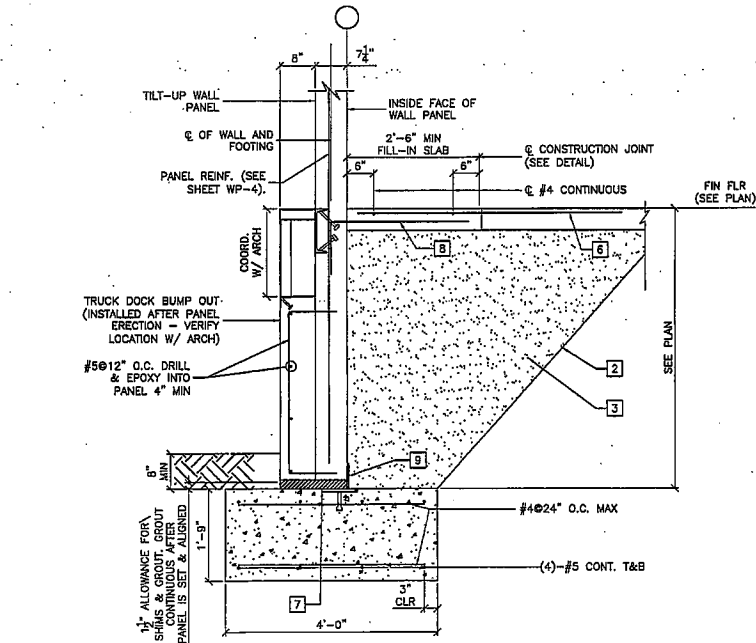
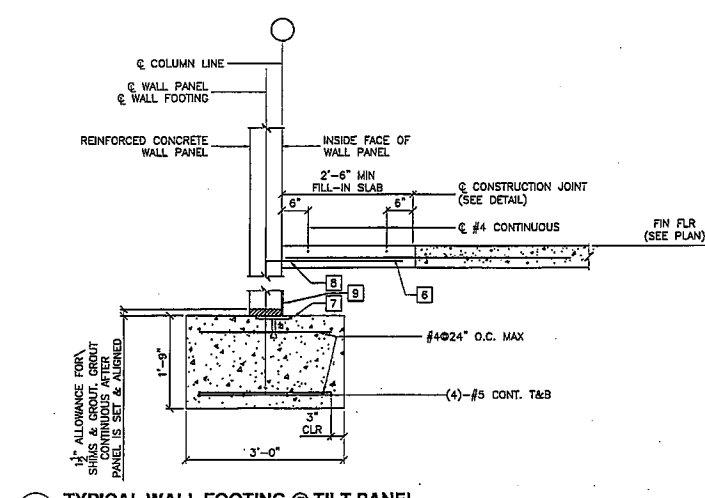
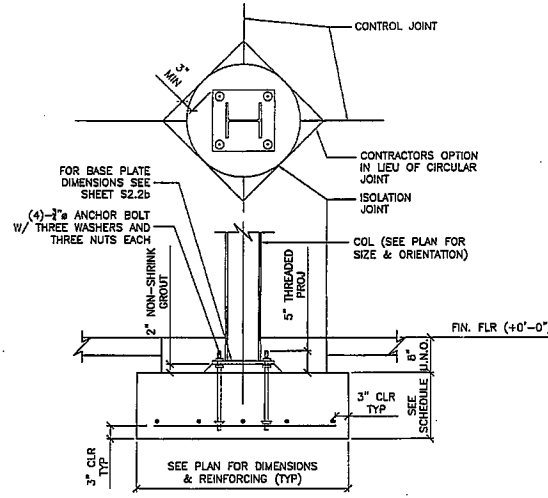
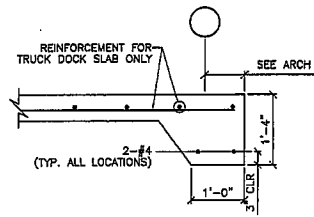
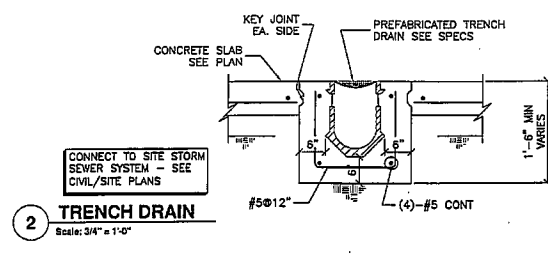
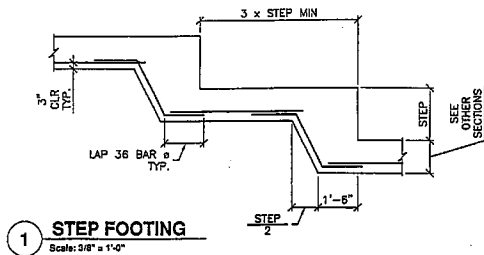
To order plans, go to www.hirepro.com

FOUNDATION PLAN AREA B

ISSUE DATES
 INITIAL 03-13-07
 ADD #3 11-29-06

JOB NO. | DWN | QCD

STRUCTURAL SHEET NO.



- SHEET NOTES:**
- PANEL BRACES SHALL NOT BE REMOVED UNTIL FILL-IN SLAB REACHES A MINIMUM STRENGTH OF 3000 PSI & ERECTION OF STRUCTURAL STEEL IS COMPLETE.
 - PROTECT SLOPE W/ 6 MIL POLY. DURING CONSTRUCTION, REMOVE BEFORE BACKFILLING.
 - COMPACTED SELECT FILL.
 - 3" PVC PIPE @ 10'-0" MAX O.C. SLOPED TO DRAIN.
 - 1 CU. FT. OF CRUSHED STONE, ASTM C-33, #67 OR COARSE, WRAPPED IN FILTER FABRIC.
 - #4x5'-0" MIN SLAB TIES AT 1'-4" O.C. MAX. INCREASE LENGTH AS REQ'D. LENGTH SHALL BE TWICE THE FILL-IN WIDTH.
 - PL3"x8"x0'-8" W/ (2) 1/2" HEADED STUDS W/ 5" EMBEDMENT (VERIFY LOCATION W/ WALL PANEL DRAWINGS).
 - DOWEL (SEE WALL PANEL DRAWINGS FOR SPACING & SIZE).
 - FOR PANEL EMBED & JUMPER PLATE SEE WALL PANEL DRAWINGS.

RETAIL ARCHITECTURE & INTERIORS
ARTScape DESIGN GROUP, INC.
 2420 CORNELL STREET, SUITE 101
 TAMPA, FL 33606
 TEL: (813) 255-8311

BELK DEPARTMENT STORES
 POSNER COMMONS
 GRANDVIEW PARKWAY & VICTOR POSNER BOULEVARD
 HAINES CITY, FLORIDA
 To order plans, go to www.idirepro.com

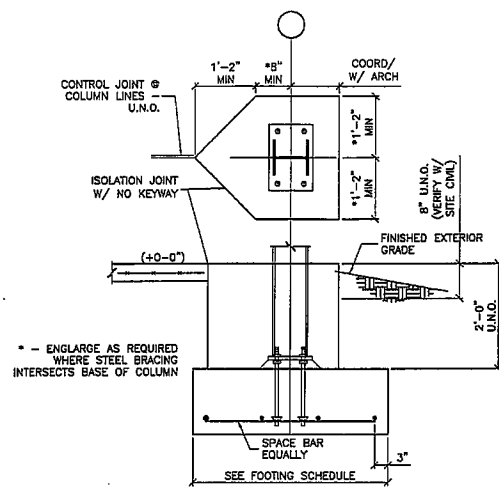
Belk
 STORE NO. 38
 IN US

FOUNDATION SECTIONS & DETAILS

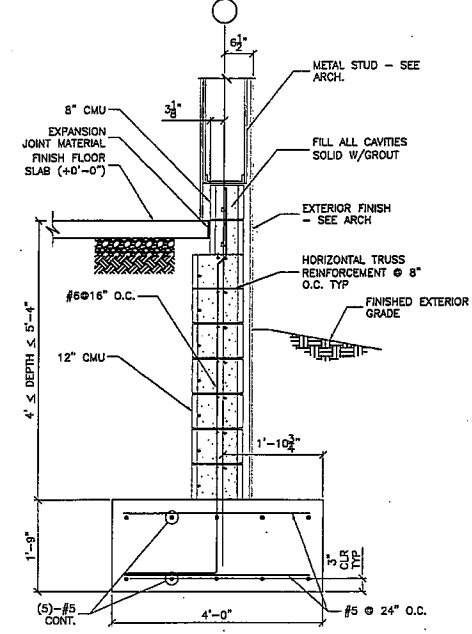
ISSUE DATES
 INITIAL 03-15-07
 ADD #3 11-29-06
 CR #2 01-10-07

JOB NO. | DWN | CKD
 07-020

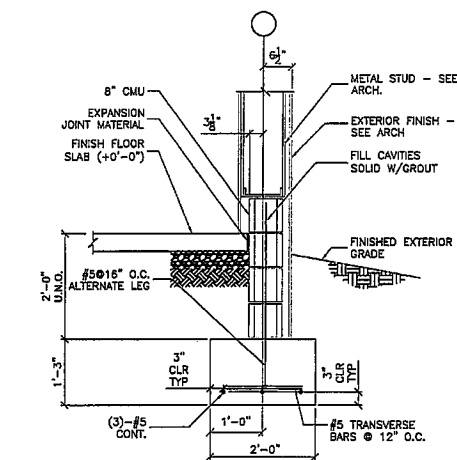
STRUCTURAL SHEET NO.



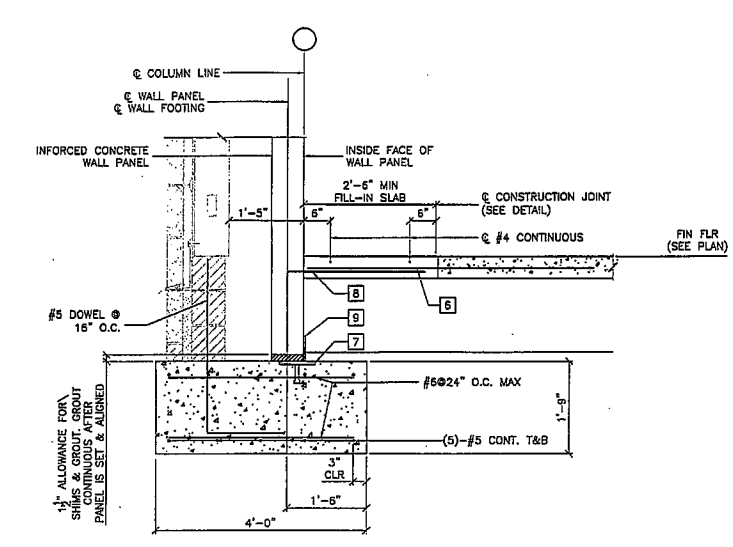
1 TYPICAL EXTERIOR FOOTING
Scale: 3/4" = 1'-0"



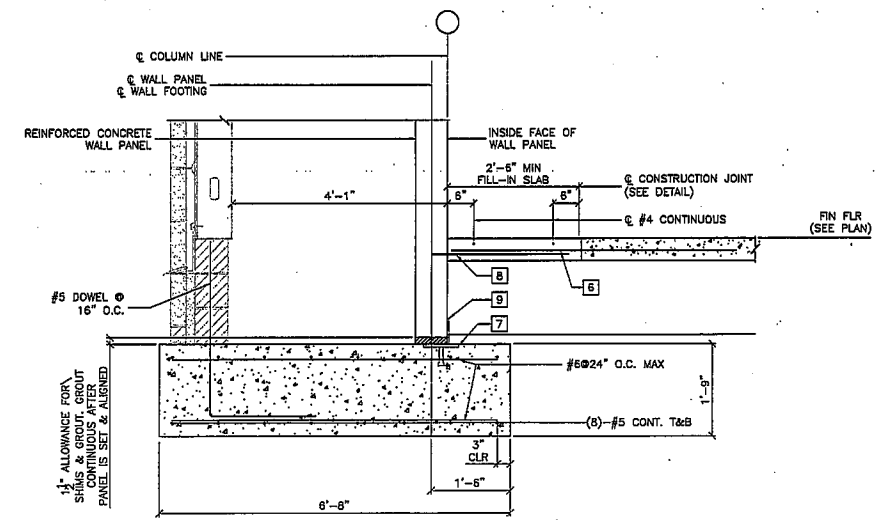
2 WALL FOOTING DETAIL
Scale: 3/4" = 1'-0"



3 TYPICAL WALL FOOTING
Scale: 3/4" = 1'-0"



4 WALL FOOTING AT ENTRANCE
Scale: 3/4" = 1'-0"



5 WALL FOOTING @ ENTRANCE
Scale: 3/4" = 1'-0"

AR RETAIL
ARCHITECTURE
& INTERIORS
1415 S. WINDY HILL DRIVE, SUITE 104
DUNEDIN, FLORIDA 33515
TEL: (813) 251-1111

Gannett Planning
CONSULTING ENGINEERS
301 S. WINDY HILL DRIVE, SUITE 104
DUNEDIN, FLORIDA 33515
TEL: (813) 251-1111

BELK
STORE NO. 391
POSNER COMMONS
GRANDVIEW PARKWAY & VICTOR POSNER BOULEVARD
HAINES CITY, FLORIDA
SITING AT FUTURE BELK STORE SITE
JUN 15 2007
To order plans, go to www.idirepro.com

ISSUE DATES
INITIAL 03-15-07

JOB NO. | DWN | CND
07-020

STRUCTURAL
SHEET NO.