

RETAIL ARCHITECTURE INTERIORS
 ARCHITECTURE INTERIORS
 ARCHITECTURE INTERIORS
 ARCHITECTURE INTERIORS
 CHATTANOOGA, TN 37408
 423.285.4313

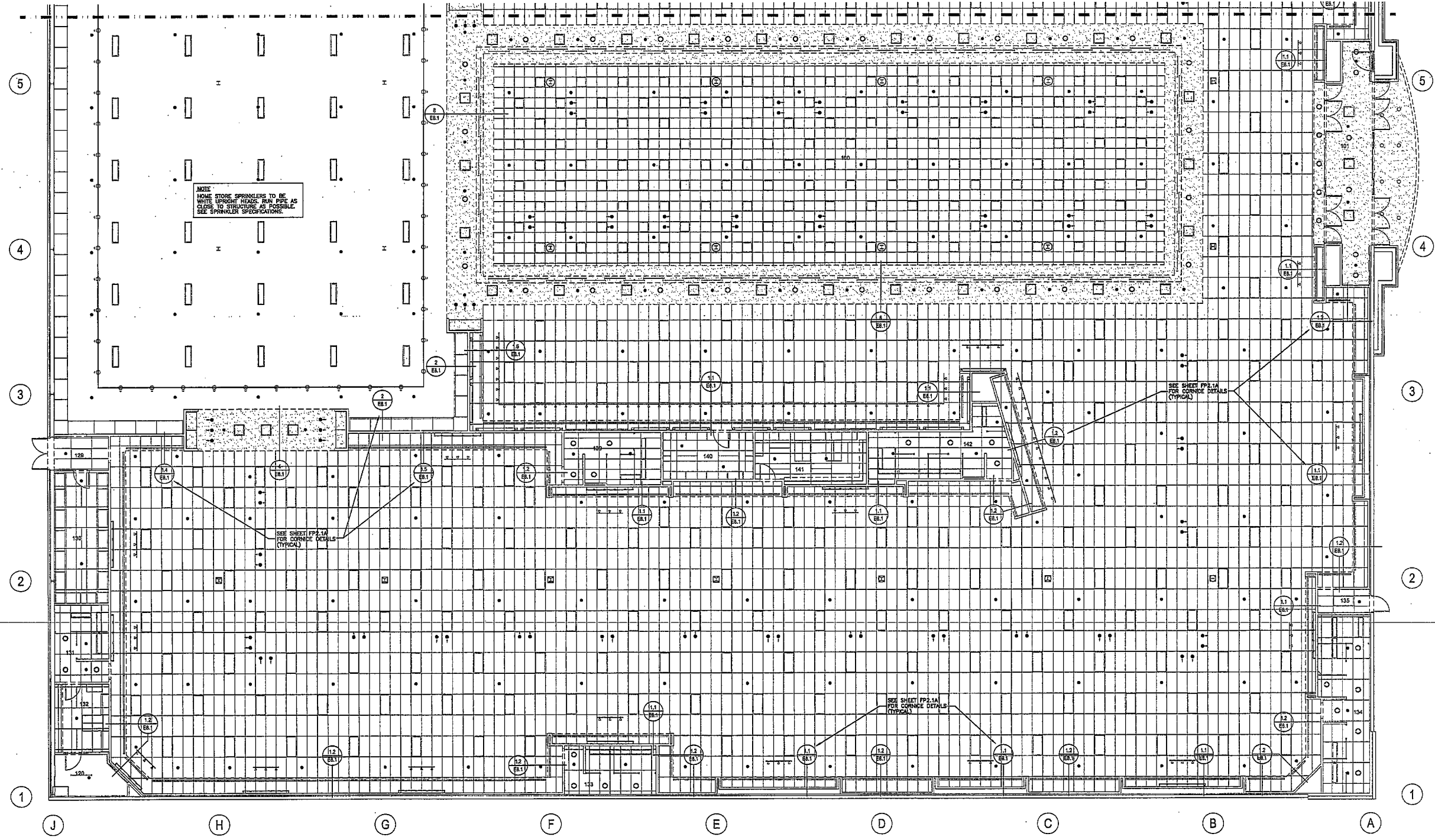
SPRINKLER LEGEND
 ● NEW SPRINKLER HEAD

SPRINKLER NOTES
 1. DOUBLE DECK SHOE STOCK - SHOE STOCK SHALL BE SPRINKLED ON BOTH LEVELS. HEADS TO BE UPRIGHT. ON LOWER LEVEL, SPRINKLER HEADS TO BE PLACED BETWEEN SHELVING IN EACH AISLE.
 2. RECEIVING - IF RECEIVING AREA HAS TWO LEVELS, BOTH LEVELS TO BE SPRINKLED. SPRINKLER HEADS TO BE UPRIGHT.
 3. SPRINKLER CONTRACTOR MUST HAVE SHOP DRAWINGS:
 A) PREPARED & SEALED BY PROFESSIONAL ENGINEER
 B) APPROVED BY LOCAL FIRE MARSHAL, PRIOR TO SUBMITTING TO PROJECT ARCHITECT & PRIOR TO ANY CONSTRUCTION.
 4. THIS PLAN IS FOR GENERAL INFORMATION ONLY. SEE SPECIFICATIONS FOR SPRINKLER SYSTEM REQUIREMENTS AND ALL OTHER INFORMATION.
 • SEE SHEET FP2.1A FOR ADDITIONAL NOTES.

ROOM LEGEND

100 GENERAL SALES	112 FAMILY RESTROOM	124 VESTIBULE	136 FITTING ROOM
101 VESTIBULE	113 MEN'S TOILET	125 STOCK ROOM	137 SHOE STOCK
102 SECURITY	114 CREDIT CORRIDOR	126 FITTING ROOM	138 FITTING ROOM
103 COATSTOCKERS	115 ELECTRICAL SWITCHGEAR	127 STOCK ROOM	139 FITTING ROOM
104 EMPLOYEE LOUNGE	116 JANITOR	128 EXIT CORRIDOR	140 STOCK ROOM
105 ASSTRAINING	117 ELECTRICAL ROOM	129 EXIT CORRIDOR	141 STOCK ROOM
106 MERCH MANAGER	118 RECEIVING	130 STOCK ROOM	142 FITTING ROOM
107 STORE MANAGER	119 SPRINKLER	131 FITTING ROOM	
108 CASH ROOM	120 RENOV'S ELECTRICAL	132 STOCK ROOM	
109 CORRIDOR	121 FITTING ROOM	133 FITTING ROOM	
110 TELECOM	122 EXIT CORRIDOR	134 FITTING ROOM	
111 WOMEN'S TOILET	123 FITTING ROOM	135 EXIT CORRIDOR	

DAVID N. SHULZ, PE
 212 N. WASHINGTON STREET, SUITE 201
 CHATTANOOGA, TN 37403
 423.285.4313



NOTE
 HOME STORE SPRINKLERS TO BE WHITE UPRIGHT HEADS. IRON PIPE AS CLOSE TO STRUCTURE AS POSSIBLE. SEE SPRINKLER SPECIFICATIONS.

SEE SHEET FP2.1A FOR CORNICE DETAILS (TYPICAL)

SEE SHEET FP2.1A FOR CORNICE DETAILS (TYPICAL)

SEE SHEET FP2.1A FOR CORNICE DETAILS (TYPICAL)

1 FIRE PROTECTION PLAN - AREA A
 FP1.1A SCALE: 1/8" = 1'-0"

NOTE
 SPRINKLER HEAD LOCATIONS INDICATED ON THIS SHEET ARE FOR PLAN REVIEW BY FIRE MARSHAL ONLY PRIOR TO SPRINKLER CONTRACTOR'S SHOP DRAWINGS THAT MUST BE APPROVED PRIOR TO CONSTRUCTION. ANY RELOCATION OR ADDITION OF HEADS REQUIRED FOR FIRE MARSHAL APPROVAL WILL BE AT THE CONTRACTOR'S EXPENSE.

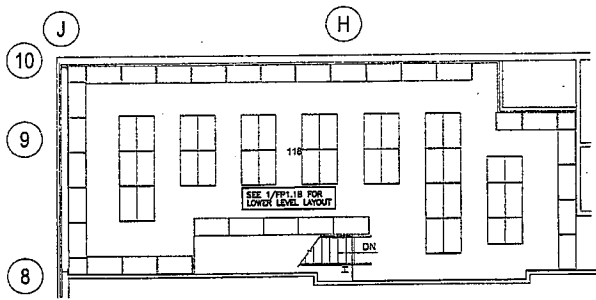
BELK DEPARTMENT STORES
 POSNER COMMONS
 GRANDVIEW PARKWAY & VICTOR POSNER BOULEVARD
 HAINES CITY, FLORIDA
 To order plans, go to www.idirepro.com



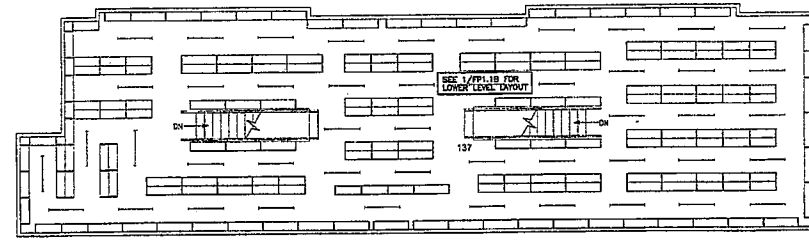
ISSUE DATES
 5-23-07

JOB NO. | DWN | CKD
 07-020

ARCHITECTURAL SHEET NO.
FP1.1A
 FIRE PROTECTION PLAN AREA A



2 RECEIVING AREA MEZZANINE
FP1.1B SCALE: 1/8" = 1'-0"



3 DOUBLE DECK STOCK ROOM - UPPER LEVEL
FP1.1B SCALE: 1/8" = 1'-0"

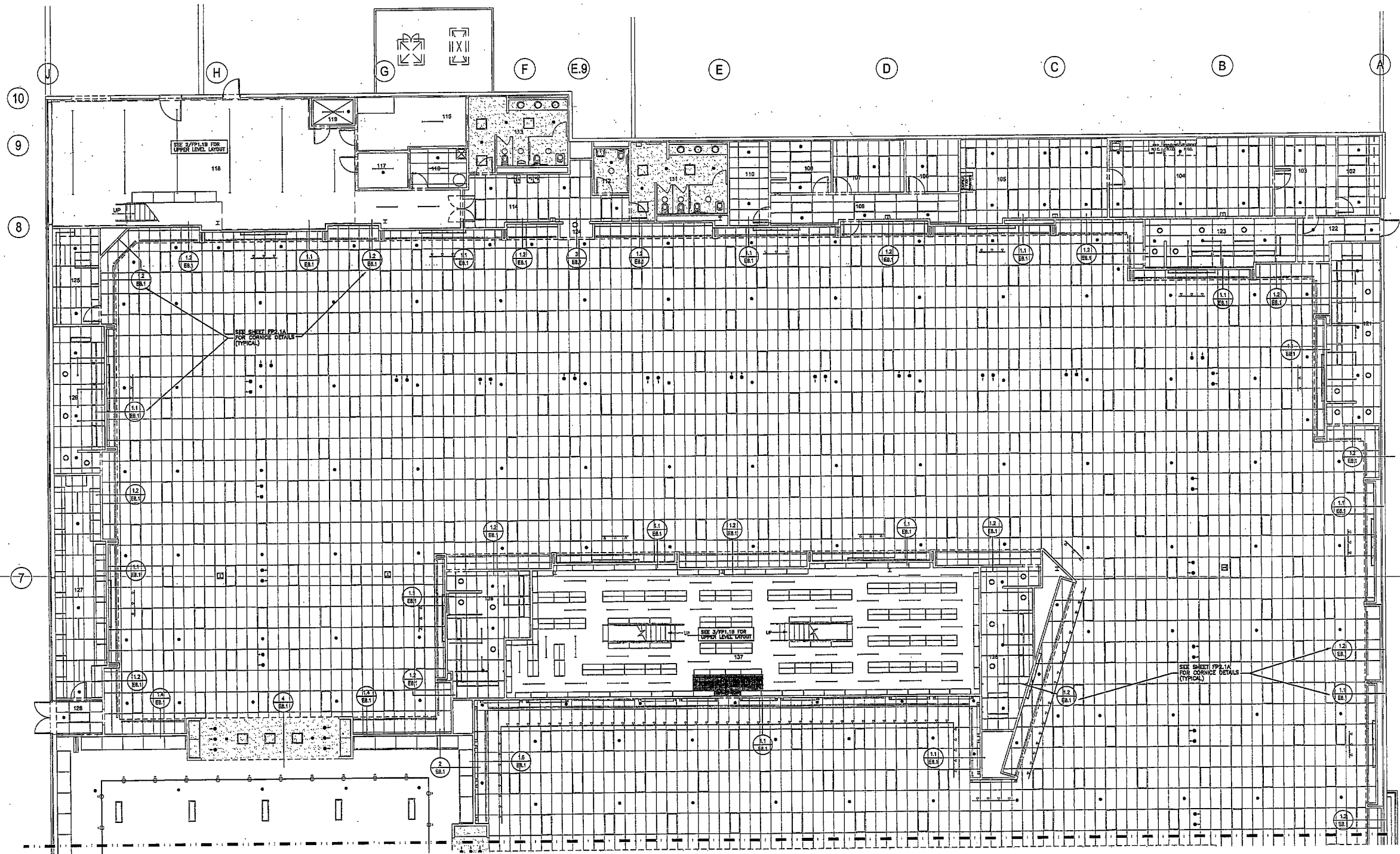
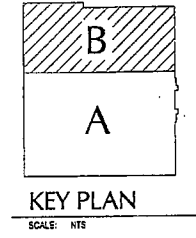
SPRINKLER LEGEND
● NEW SPRINKLER HEAD

SPRINKLER NOTES

- DOUBLE DECK SHOE STOCK - SHOE STOCK SHALL BE SPRINKLED ON BOTH LEVELS. HEADS TO BE UPRIGHT. ON LOWER LEVEL, SPRINKLER HEADS TO BE PLACED BETWEEN SHELVING IN EACH AISLE.
- RECEIVING - IF RECEIVING AREA HAS TWO LEVELS, BOTH LEVELS TO BE SPRINKLED. SPRINKLER HEADS TO BE UPRIGHT.
- SPRINKLER CONTRACTOR MUST HAVE SHOP DRAWINGS:
 - PREPARED & SEALED BY PROFESSIONAL ENGINEER
 - APPROVED BY LOCAL FIRE MARSHAL PRIOR TO SUBMITTING TO PROJECT ARCHITECT & PRIOR TO ANY CONSTRUCTION.
- THIS PLAN IS FOR GENERAL INFORMATION ONLY. SEE SPECIFICATIONS FOR SPRINKLER SYSTEM REQUIREMENTS AND ALL OTHER INFORMATION.
* SEE SHEET FPE2.1A FOR ADDITIONAL NOTES.

ROOM LEGEND

100 GENERAL SALES	102 FAMILY RESTROOM	124 VESTIBULE	136 FITTING ROOM
101 VESTIBULE	103 MEN'S TOILET	125 STOCK ROOM	137 SHOE STOCK
102 SECURITY	104 CREDIT CORRIDOR	126 FITTING ROOM	138 FITTING ROOM
103 COATSTOCKERS	105 ELECTRICAL SWITCHGEAR	127 STOCK ROOM	139 FITTING ROOM
104 EMPLOYEE LOUNGE	106 JANITRY	128 EXIT CORRIDOR	140 STOCK ROOM
105 ASSESSMENT	107 ELECTRICAL ROOM	129 EXIT CORRIDOR	141 STOCK ROOM
106 MERCH MANAGER	108 RECEIVING	130 STOCK ROOM	142 FITTING ROOM
107 STORE MANAGER	109 SPRINKLER	131 FITTING ROOM	
108 CASH ROOM	120 REMOTE ELECTRICAL	132 STOCK ROOM	
109 CORRIDOR	121 FITTING ROOM	133 FITTING ROOM	
110 TELECOM	122 EXIT CORRIDOR	134 FITTING ROOM	
111 WOMEN'S TOILET	123 FITTING ROOM	135 EXIT CORRIDOR	



1 FIRE PROTECTION PLAN - AREA B
FP1.1B SCALE: 1/8" = 1'-0"

NOTE
SPRINKLER HEAD LOCATIONS INDICATED ON THIS SHEET ARE FOR PLAN REVIEW BY FIRE MARSHAL ONLY PRIOR TO SPRINKLER CONTRACTOR'S SHOP DRAWINGS THAT MUST BE APPROVED PRIOR TO CONSTRUCTION. ANY RELOCATION OR ADDITION OF HEADS REQUIRED FOR FIRE MARSHAL APPROVAL WILL BE AT THE CONTRACTOR'S EXPENSE.

RETAIL ARCHITECTURE INTERIORS
ARTIST DESIGN GROUP, INC.
300 N. WILSON AVENUE, SUITE 300
CHATTANOOGA, TN 37408
423.265.4313

DAVID N. SHULZ, P.E.
215 N. WILSON AVENUE, SUITE 300
CHATTANOOGA, TN 37408
PH: 703.331.9305 DSA-07803

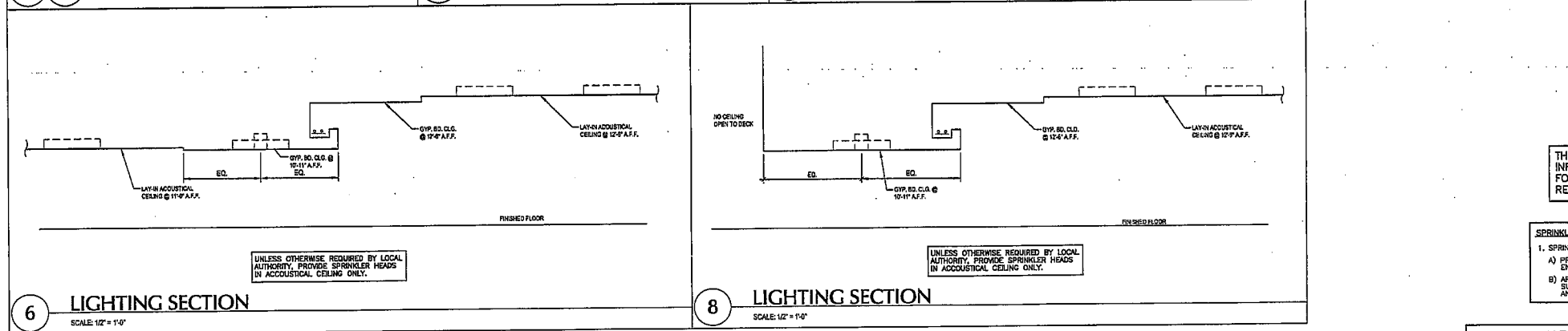
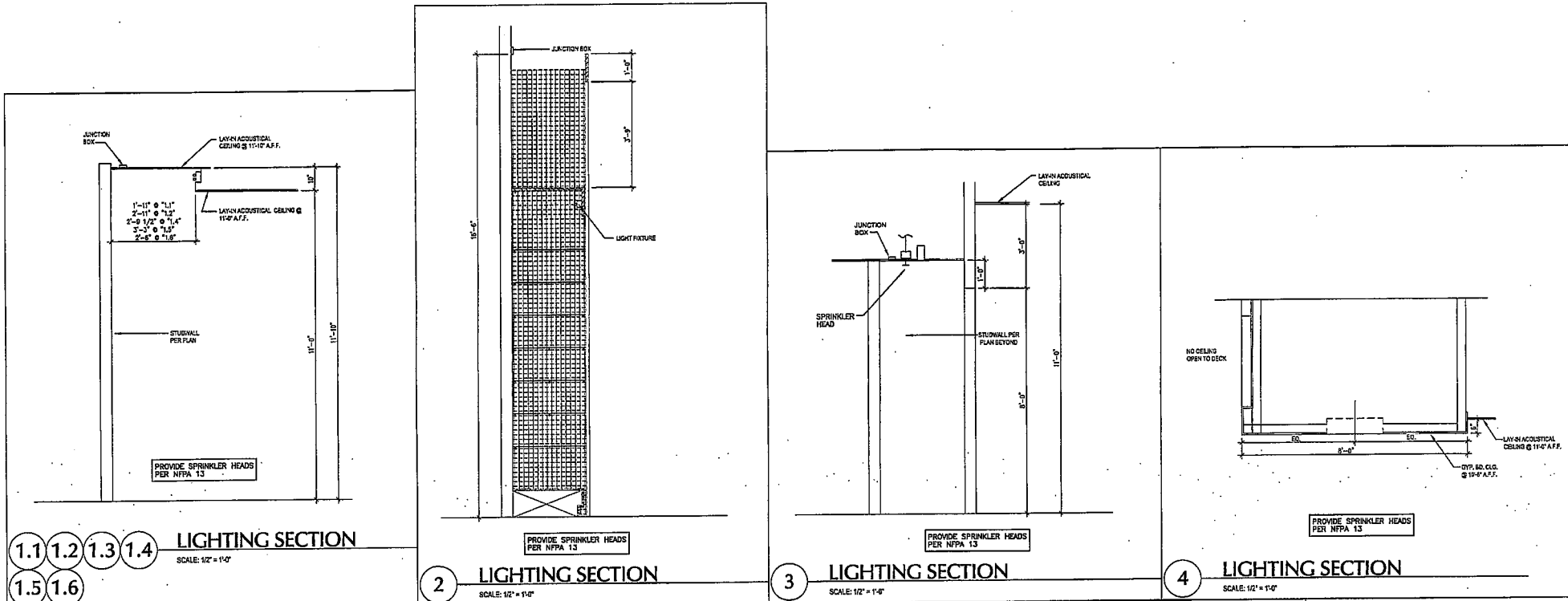
BELK DEPARTMENT STORES
POSNER COMMONS
GRANDVIEW PARKWAY & VICTOR POSNER BOULEVARD
HAINES CITY, FLORIDA
To order plans, go to www.idirepro.com



ISSUE DATES
INITIAL 5-23-07

JOB NO. | DWN | CDD
07-020

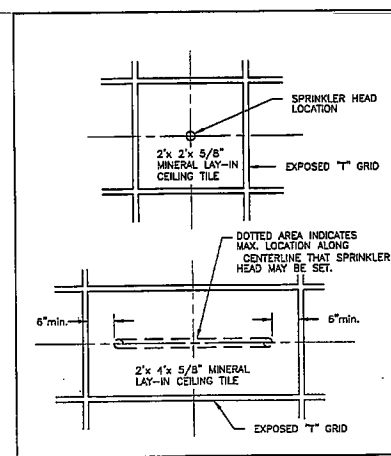
ARCHITECTURAL SHEET NO.
FP1.1B
FIRE PROTECTION PLAN AREA B



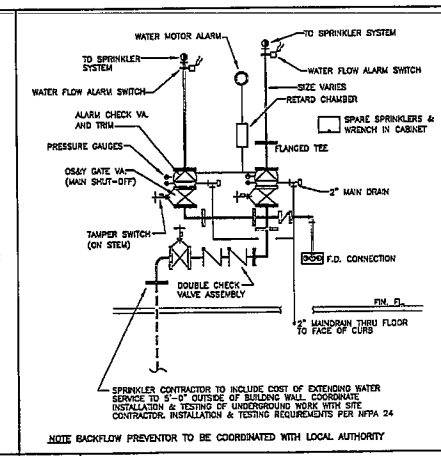
THIS PLAN IS FOR GENERAL INFORMATION ONLY. SEE SPECS FOR SPRINKLER SYSTEM REQUIREMENTS.

- SPRINKLER NOTES**
1. SPRINKLER CONTRACTOR MUST HAVE SHOP DRAWINGS:
 - a) PREPARED WITH CALCULATIONS BY A PROFESSIONAL ENGINEER
 - b) APPROVED BY LOCAL FIRE MARSHAL PRIOR TO SUBMITTING TO PROJECT ARCHITECT & PRIOR TO ANY CONSTRUCTION.

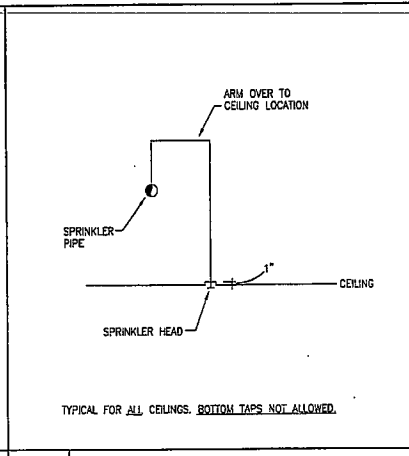
- GENERAL FIRE PROTECTION**
1. DO NOT SCALE DRAWINGS. SEE ARCHITECTURAL DRAWINGS AND REFLECTED CEILING PLANS FOR EXACT LOCATION OF PARTITIONS, CEILING CONTRIBUTIONS, LIGHTS, VALANCES, etc.
 2. FURNISH ALL LABOR, MATERIAL, AND EQUIPMENT REQUIRED FOR THE COMPLETION AND OPERATION OF ALL SYSTEMS IN THIS SECTION OF WORK IN ACCORDANCE WITH ALL APPLICABLE CODES.
 3. SPRINKLER CONTRACTOR SHALL COORDINATE CLOSELY WITH MECHANICAL AND ELECTRICAL CONTRACTORS TO AVOID INTERFERENCE WITH OTHER TRADES.
 4. ANY SPRINKLER SHUT-OFF VALVES OR DRAIN VALVES THAT ARE TO BE ENCLOSED BEHIND WALL, AN ACCESS PANEL SHALL BE PROVIDED.
 5. VERIFY EXACT LOCATION OF ALL GROSS MAIN PIPING, BOTH VERTICAL AND HORIZONTAL, SO AS NOT TO CONFLICT WITH ARCHITECTURAL DESIGN.
 6. SPRINKLER SYSTEM SHALL BE IN ACCORDANCE WITH SPECIFICATIONS SECTION 15300, MEET UNDERWRITERS, LOCAL AUTHORITY & BELK REQUIREMENTS, AS WELL AS NFPA 13 CODE, LATEST EDITION, ORDINARY HAZARD GROUP 2.
 7. ALL SPRINKLER HEADS AND PLATES SHALL BE AS SPECIFIED, SECTION 15300.
 8. SPRINKLER HEADS CONFLICTING WITH RECESSED INCANDESCENT LIGHTS OR TRACK LIGHTS SHALL BE COORDINATED WITH ELECTRICAL CONTRACTOR. WHERE HEAD CANNOT BE RELOCATED WITHOUT ADDING A HEAD, LIGHT SHALL BE RELOCATED.
 9. THE SPRINKLER CONTRACTOR SHALL DESIGN A PIPE SCHEDULE ORDINARY HAZARD SPRINKLER SYSTEM FOR LOWER LEVEL OF DOUBLE STOCK AREAS. ALL PIPING & HEADS TO RUN IN AISLES BETWEEN SHELVING.
 10. ALL PIPING SHALL BE HUNG FROM THE STRUCTURAL STEEL. PIPE HUNG FROM BAR JOIST SHALL BE HUNG AT PANEL POINTS. ANY PIPING ABOVE 4" IN SIZE RUNNING PARALLEL TO JOIST MUST BE SUPPORTED FROM ANGLES BETWEEN 2 JOISTS. BEAM CLAMPS ON BAR JOIST NOT ALLOWED.
 11. FOR DETAILS SHOWING SPRINKLER HEAD LOCATIONS IN THE CORNICE DETAILS, SEE SHEET FP2.1A.



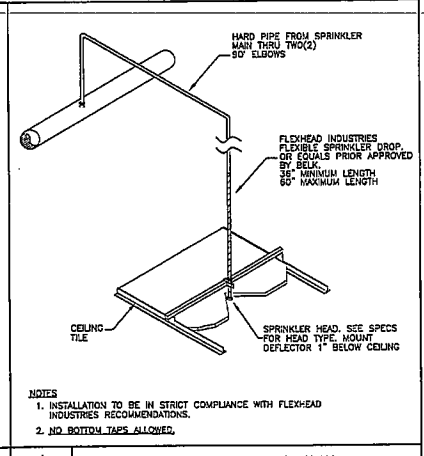
1 CEILING GRID SYSTEM
FP2.1A NO SCALE



2 SPRINKLER RISER DIAGRAM
FP2.1A NO SCALE



3 TYPICAL SPRINKLER HEAD INSTALLATION
FP2.1A NO SCALE RIGID CONNECTION



4 TYPICAL DROP CEILING INSTALLATION
FP2.1A NO SCALE FLEXIBLE CONNECTION

DAVID N. SHULTZ, P.E.
ARCHITECTURE
INTERIORS
PH 704.334.7363
DEA-07803

BELK DEPARTMENT STORES
POSNER COMMONS
GRANDVIEW PARKWAY & VICTOR POSNER BOULEVARD
HAINES CITY, FLORIDA
www.idirepro.com

Belk
STORE NO. 391

APPROVED
JUN 05 2007
C. J. HARRIS, P.E.

ISSUE DATES
INITIAL 5-23-07

JOB NO. | DWN | CKD
07-020

ARCHITECTURAL
SHEET NO.
FP2.1A
FIRE PROTECTION CORNICE
DETAILS & NOTES