

REMODEL KEYED NOTES

No.	DESCRIPTION
1	EXISTING ITEM (S) / AREA TO REMAIN
2	EXISTING ITEM (S) TO BE REMOVED
3	EXISTING ITEM (S) TO BE RELOCATED
4	RELOCATED ITEM (S)
5	EXISTING WALL TO BE EXTENDED
6	EXISTING OPENING TO BE EXPANDED
7	INFILL TO MATCH EXISTING
8	NEW OPENING
9	NEW ITEM (S)
10	V.C.T. REQUIRED

ARCHITECTURAL KEYED NOTES

No.	DESCRIPTION
1	GLAZING
2	WALL / PARTITION
3	FIRE WALL
4	FIRE SHUTTER DOOR
5	ROLLING OVERHEAD DOOR
6	AUTOMATIC SLIDING DOOR (CONSULTANT TO VERIFY REQUIRED SIZE)
7	BI-FOLD DOOR (CONSULTANT TO VERIFY REQUIRED SIZE)
8	DUTCH DOOR (INSTALLED BY CONTRACTOR)
9	MAN DOOR
10	DOUBLE SWING DOOR
11	IMPACT DOOR
12	ROOF LADDER / HATCH
13	ROOF LEADER / DRAIN
14	LINE OF MEZZANINE ABOVE
15	LIFT, CHUTE, CONVEYOR OR STAIRS
16	CART RAIL
17	SPRINKLER RISER
18	GAS RISER
19	DOMESTIC WATER RISER
20	BALER
21	COMPACTOR
22	GENERATOR
23	TRANSFORMER
24	ELECTRICAL PANELS
25	FLOOR SINK
26	WATER COOLER

WOOD PACKAGE KEYED NOTES

No.	DESCRIPTION (SEE WOOD PACKAGE FOR DETAILS)
1	CPU COUNTER
2	MANAGER'S WORKSTATION
3	COMPUTER CART
4	MOBILE REGISTER CART
5	"R" ZONE SLIDING DOOR
6	DEMO TABLE
7	TV / VCR CABINET
8	STORAGE CABINET
9	ROD PROCESSING COUNTER
10	STORAGE BIN
11	BICYCLE ASSEMBLY COUNTER
12	REFUND / EXCHANGE COUNTERS
13	JUVENILE REGISTRY DESK AND END PANEL
14	BENCH
15	TABLE & CHAIRS

FIXTURE PLAN KEYED NOTES

No.	DESCRIPTION
1	COAT RACK / HOOKS
2	REFRIGERATOR
3	LOCKERS
4	VENDING MACHINES
5	KIDDIE RIDE
6	ICE CREAM COOLER
7	SODA COOLER
8	PALLETS (BELOW RACK)
9	PALLETS (TOP)
10	ROLLER CONVEYOR
11	OVERHEAD RACKING
12	6" BORDER TILE (TYP.)
13	END PANEL (SUPPLIED BY FIXTURE COMPANY)
14	END PANEL (SUPPLIED BY CONTRACTOR)
15	POST W/ RETRACTABLE BELT (TRAFFIC CONTROL)
16	METAL BENCH
17	DIRECTORY
18	REGISTRY KIOSK

CRIB/APPEL SQ. FT.

	CRIB	APPEL
PROTOTYPE	1,312	1,957
THIS PLAN	1,650	2,041

NOTES

1. ALL PERIMETER SALES GONDOLAS ARE 12'-0" HIGH, UNLESS NOTED.

REGISTER COUNTS

FRONT END REGISTERS = 9
"R" ZONE REGISTERS = 3
TOTAL REGISTERS = 12
REFUND REGISTERS = 2

PRE-SALES RACKING

SIZE	LN. FT.	SIZE	LN. FT.
1'-8"	164	5'-0"	280
3'-0"	0	GONDOLA	206
3'-4"	0	RTW	98
4'-0"	992	OTHER	0

2007 SBS CONVERSION CHARTS

SQUARE FOOTAGE COUNTS

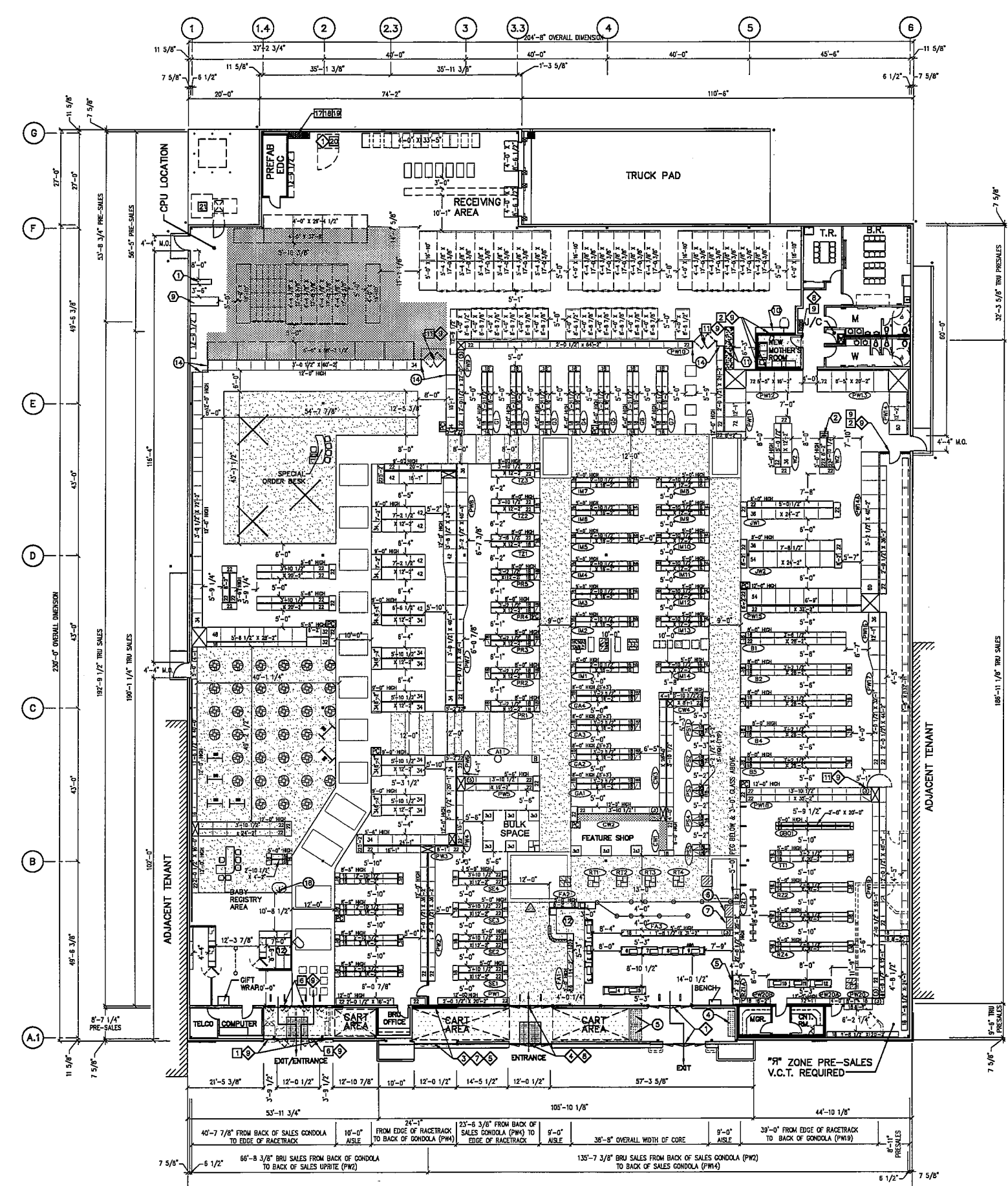
	TRU SALES (S.F.)	BRU SALES (S.F.)	TOTAL SALES (S.F.)	TRU PRE-SALES (S.F.)	BRU PRE-SALES (S.F.)	TOTAL PRE-SALES (S.F.)	AUX. (S.F.)	BUILDING (S.F.)	MEZZANINE (S.F.)	TOTAL BUILDING (S.F.)
PROTOTYPE	21,725	11,647	33,372	6,038	1,870	7,908	3,463	44,743	N/A	44,743
THIS PLAN	22,577	13,231	35,808	7,233	2,059	9,291	4,104	49,203	N/A	49,203

LINEAR FOOTAGE COUNTS

	TRU SALES (L.F.)	BRU SALES (L.F.)	TOTAL SALES (L.F.)	APPEL UNITS	TRU PRE-SALES (L.F.)	BRU PRE-SALES (L.F.)	TOTAL PRE-SALES (L.F.)	AT FRONT	AT REAR	ON MEZZANINE	UNDER MEZZANINE
PROTOTYPE	3,029	1,039	4,068	33	962	356	1,318	= ±0'-0"	= ±0'-0"	= ±N/A	= ±N/A
THIS PLAN	3,084	1,057	4,141	41	1,322	416	1,738				

CUBIC FOOTAGE COUNTS

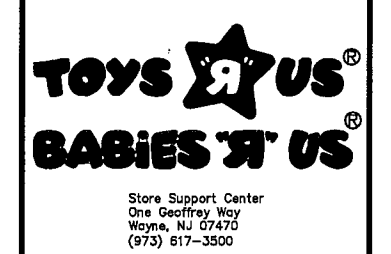
	TRU SALES (C.F.)	BRU SALES (C.F.)	TOTAL SALES (C.F.)	TRU SALES OVERSTOCK (C.F.)	BRU SALES OVERSTOCK (C.F.)	TOTAL SALES OVERSTOCK (C.F.)	TRU PRE-SALES (C.F.)	BRU PRE-SALES (C.F.)	TOTAL PRE-SALES (C.F.)
PROTOTYPE	29,610	14,172	43,782	13,658	9,092	22,750	24,148	10,196	34,344
THIS PLAN	31,073	14,603	45,676	14,123	8,876	22,999	31,904	11,328	43,232



Revisions

No.	Date	Description
01/08/07		ISSUED TO CONSULTANT FOR CD DEVELOPMENT-LMC
1	02/23/07	FLIPPED TRU/BRU'S LAYOUT; REVISED FRONT END OFFICE CONFIGURATION, BRU ENTRANCE LOCATION - LMC
2	03/21/07	REVISED FLOOR LAYOUT; ADDED PLANKS IN TRU RACETRACK, "SQUARE IN SQUARE" PATTERNS AT EACH RACETRACK CORNERS AND TRANSITION PORTIONS AT THE PORTALS - T.Q.

BID DATE: ---
 CAD NAME: BB1BRFO1 PROJECT NO.: ---
 DRAWN BY: LC/T.Q. CHECKED BY: T.Q.
 PROTOTYPE DESIGNATION: ---



This drawing is the Exclusive Property of TOYS 'R' US. The information shown may not be used nor the Drawings Reproduced without permission of TOYS 'R' US.

Location: COLUMBUS GEORGIA
 COLUMBUS PARK CROSSING

Drawing Title: SIDE BY SIDE FIXTURE PLAN

Scale: --- Date: 01/08/2007

Sheet No. RF1 2

